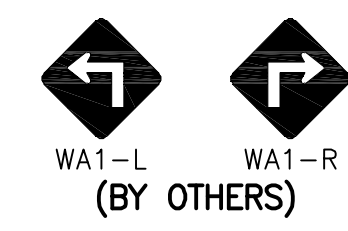
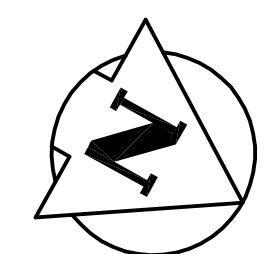
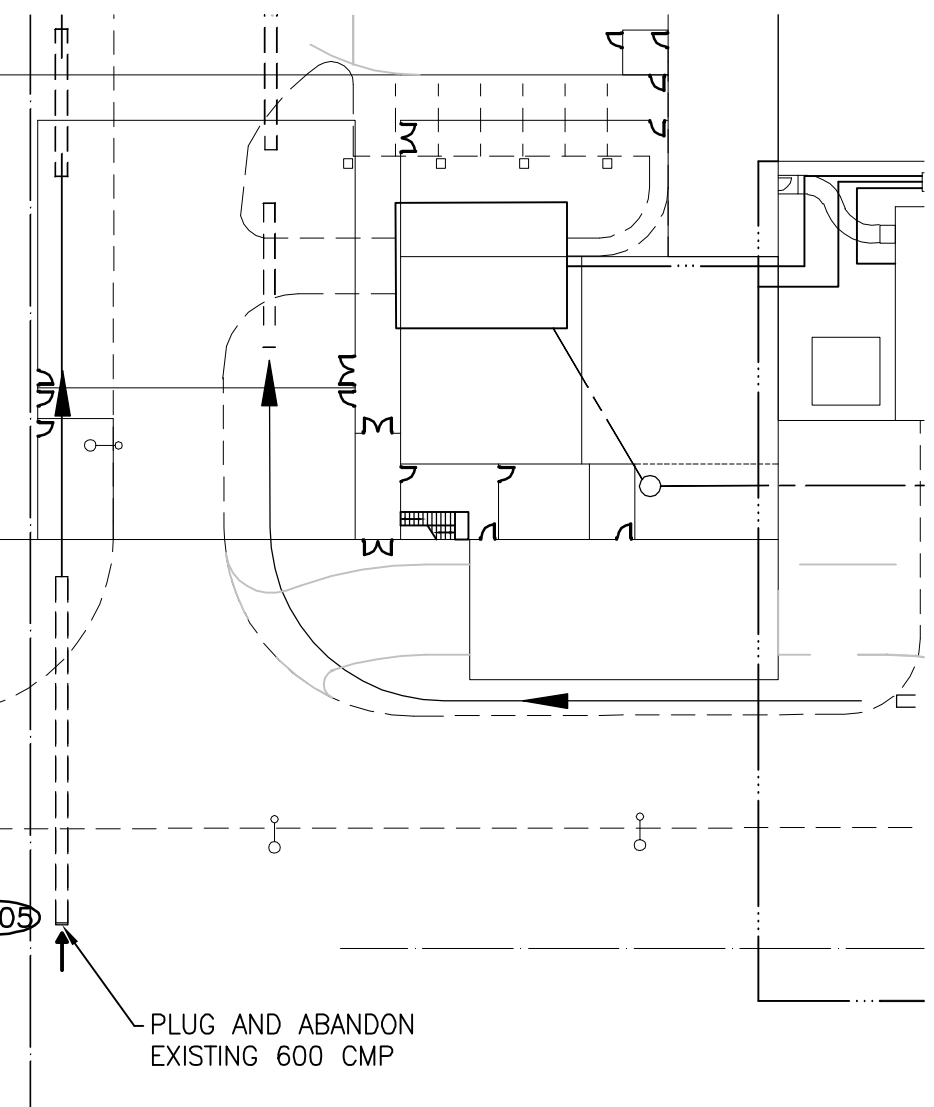
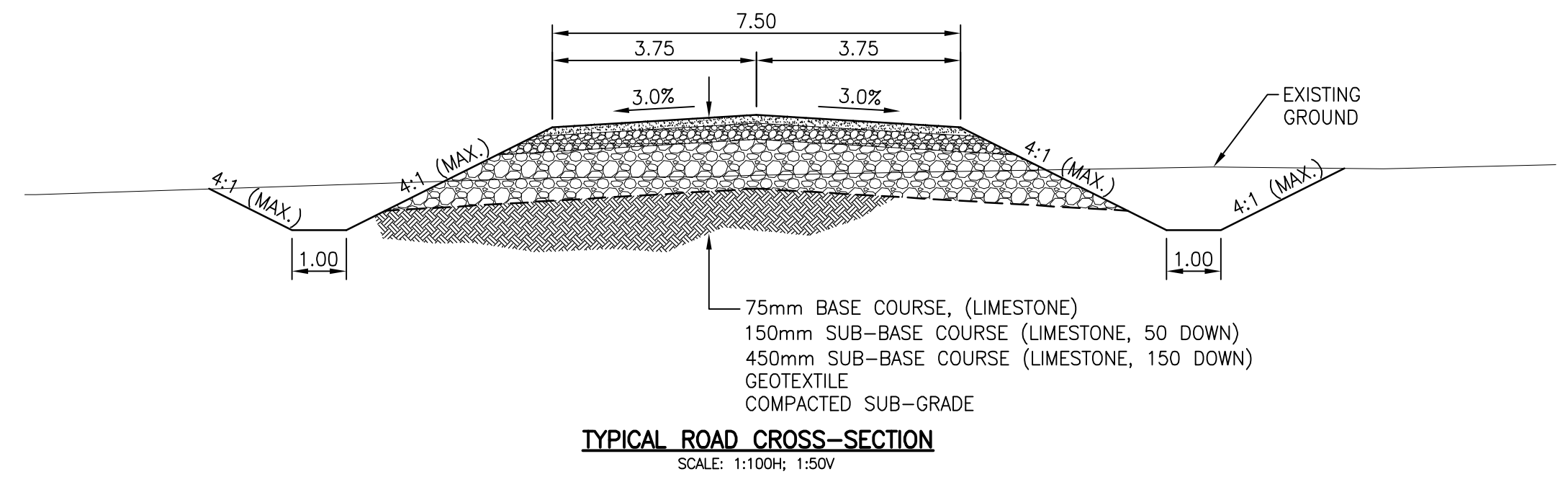
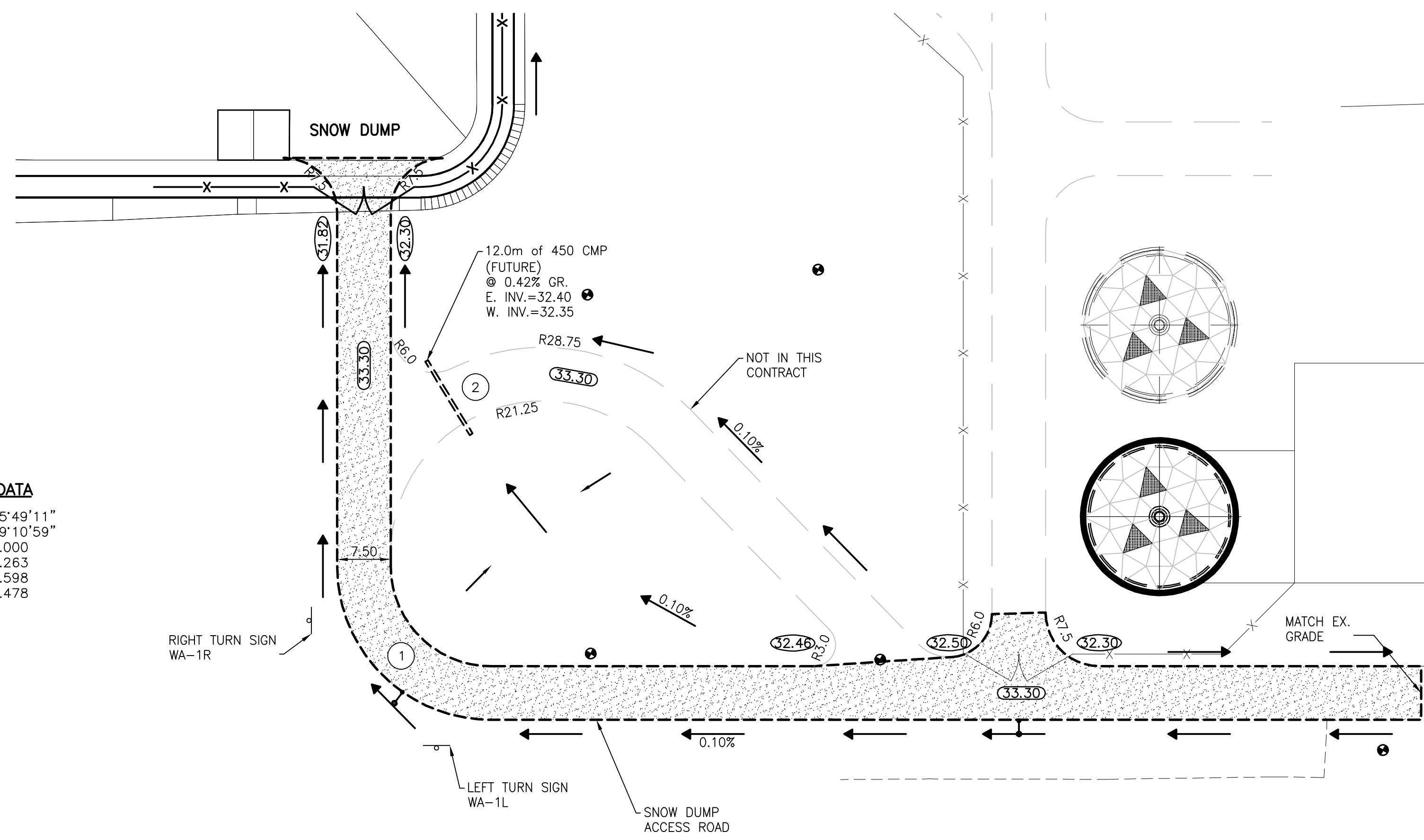


SNOW DUMP ACCESS ROAD



CURVE DATA		CURVE DATA	
Δ =	90°0'0"	Δ =	135°49'11"
D =	322'47'35"	D =	229'10'59"
R =	17.750	R =	25.000
L =	27.882	L =	59.263
T =	17.750	T =	61.598
E =	7.352	E =	41.478
PI STA =	1+43.835	PI STA =	
PC STA =	1+26.085	PC STA =	
PT STA =	1+53.967	PT STA =	



WARNING

IF POWER EQUIPMENT OR EXPLOSIVES ARE TO BE USED FOR EXCAVATION ON THIS PROJECT THE CONTRACTOR MUST:
 1) NOTIFY THE GAS COMPANY OF THE PROPOSED LOCATION OF EXCAVATION.
 2) TAKE PRECAUTION TO AVOID DAMAGE TO GAS COMPANY INSTALLATIONS.
 SEE PROVINCIAL REGULATION 140/92 FOR DETAILS

METRIC

WHOLE NUMBERS INDICATE MILLIMETRES
 DECIMALIZED NUMBERS INDICATE METRES

83R066 - N. side Frobbisher Rd., 0.25km W. of St. Mary's Rd., T88, on top of 0.05m dia. x 1.2m iron pipe (near conc. gate chamber), 7.1m N. of N. side & 9.8m W. of W. side of conc. gate chamber 0.25km W. of St. Mary's Rd.

APEGM
 Certificate of Authorization
 Stantec Consulting Ltd.
 No. 1301 Expiry: April 30, 2009

EXISTING	LEGEND-PLAN	PROPOSED	EXISTING	LEGEND-PLAN	PROPOSED	EXISTING	LEGEND-PROFILE	PROPOSED
150 WM	WATERMAIN	150 WM	---	HYDRO	---	150 WM	WATERMAIN	150 WM
⊕	HYDRANT	⊕	---	M.T.S.	---	⊕	HYDRANT, VALVE	⊕
⊙	VALVE	⊙	---	CONCRETE	---	⊕	LAND DRAINAGE SEWER	⊕
300 L2S	LAND DRAINAGE SEWER	300 L2S	---	ASPHALT	---	300 L2S	WASTE WATER SEWER	300 L2S
250 WWS	WASTE WATER SEWER	250 WWS	---	SIDEWALK	---	250 WWS	PROPERTY LINE	---
○	MANHOLE	○	---	PROPERTY LINE	---	○	NORTH OR WEST GUTTER	---
□	CATCH BASIN	□	---	SURVEY BAR	---	○	SOUTH OR EAST GUTTER	---
▽	CURB INLET	▽	---	DITCH	---	◇	NORTH OR WEST R	---
+	JUNCTIONS	+	31.334	ELEVATION	32.233	○	SOUTH OR EAST R	---
▬	CULVERT	▬	---	TEST HOLE	---	△	NORTH OR WEST DITCH	---
⊕	GAS	⊕	---			▽	SOUTH OR EAST DITCH	---

LOCATION APPROVED UNDERGROUND STRUCTURES

SUPV. U/G STRUCTURES COMMITTEE DATE

NOTE:
 LOCATION OF UNDERGROUND STRUCTURES AS SHOWN ARE BASED ON THE BEST INFORMATION AVAILABLE BUT NO GUARANTEE IS GIVEN THAT ALL EXISTING UTILITIES ARE SHOWN OR THAT THE GIVEN LOCATIONS ARE EXACT. CONFIRMATION OF EXISTENCE AND EXACT LOCATION OF ALL SERVICES MUST BE OBTAINED FROM THE INDIVIDUAL UTILITIES BEFORE PROCEEDING WITH CONSTRUCTION.

NO.	REVISIONS	DATE	BY

Stantec Consulting Ltd.
 905 Waverley Street, Winnipeg, Manitoba
 Tel 204-489-5900 Fax 204-453-9012

DESIGNED BY: B.J.R. CHECKED BY: H.A.K.
 DRAWN BY: W.A. APPROVED BY: B.J.R.

HR. SCALE: 1:500
 VERTICAL: 1:20

RELEASED FOR CONSTRUCTION: DATE

ENGINEER'S SEAL
 PROVINCE OF MANITOBA
 B.J. RANSOM
 MEMBER 22122
 REGISTERED PROFESSIONAL ENGINEER

THE CITY OF WINNIPEG
 WATER AND WASTE DEPARTMENT

Winnipeg

SOUTH END WATER POLLUTION CONTROL CENTRE
 SNOW DUMP ACCESS ROAD

BID OPPORTUNITY No. 489 - 2008
 CITY DRAWING NUMBER I-0102A-D-C0001-002-00
 SHEET 3 OF 6

I:\1120814\144_Drawing\DWG\Sheet_001-0102A-D-C0001-002-000.dwg
 2008-06-10 09:49:41 By: wmmiller