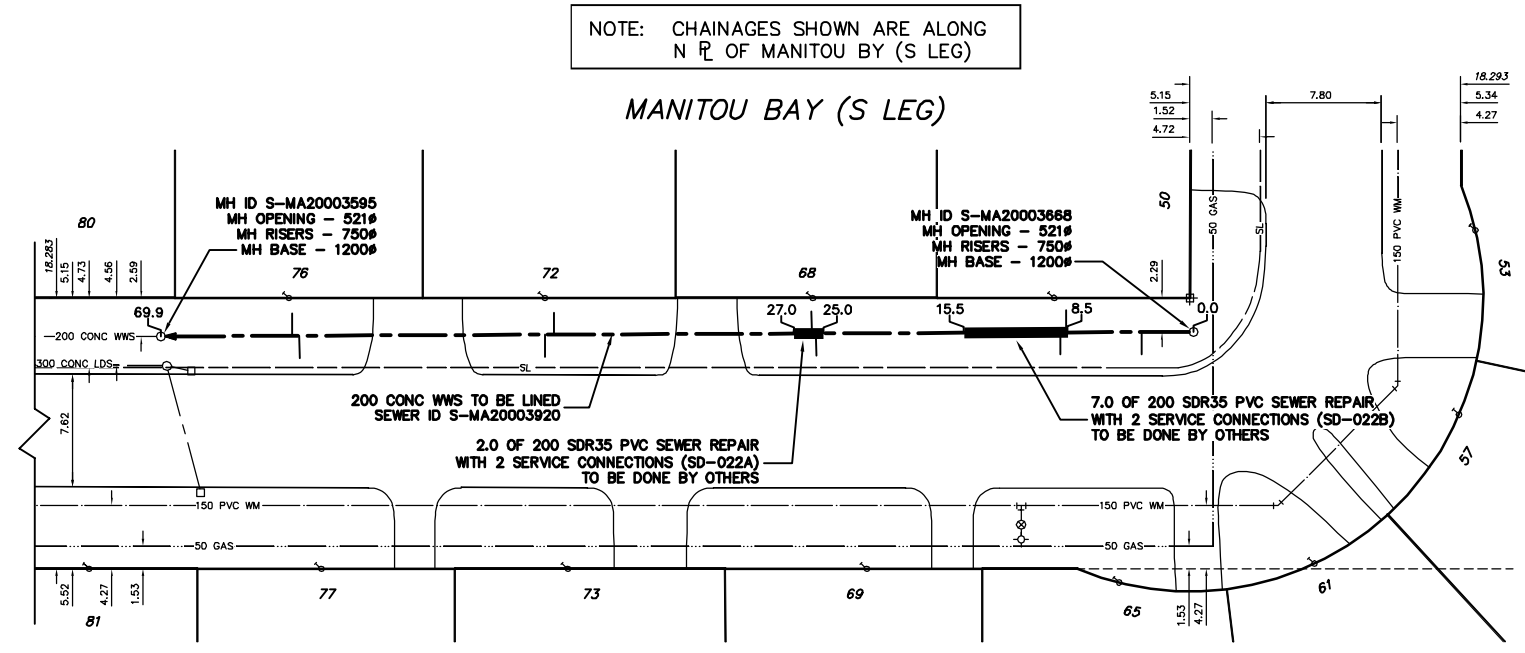
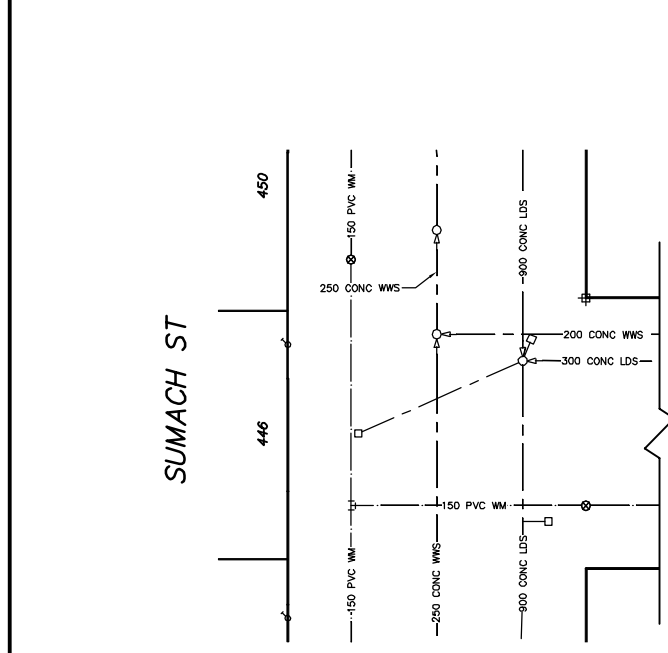


NOTE: CHAINAGES SHOWN ARE ALONG N R OF MANITOU BY (S LEG)

MANITOU BAY (S LEG)

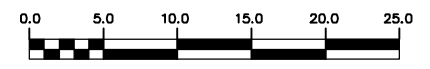


SEWER SERVICE INFORMATION		
ADDRESS	SIZE	R DIST
50 MANITOU BY RESIDENTIAL	-	JUNCTION TIE
53 MANITOU BY RESIDENTIAL	-	-
57 MANITOU BY RESIDENTIAL	-	-
61 MANITOU BY RESIDENTIAL	-	-
65 MANITOU BY RESIDENTIAL	-	-
68 MANITOU BY RESIDENTIAL	9.07 W OF EL	-
69 MANITOU BY RESIDENTIAL	25.88 W 2ND MH E SUMACH ST	-
72 MANITOU BY RESIDENTIAL	8.60 E OF WL	-
73 MANITOU BY RESIDENTIAL	25.27 W 2ND MH E SUMACH ST	-
76 MANITOU BY RESIDENTIAL	1.72 E OF EL	-
77 MANITOU BY RESIDENTIAL	32.28 W 2ND MH E SUMACH ST	-
80 MANITOU BY RESIDENTIAL	8.66 E OF WL	-
81 MANITOU BY RESIDENTIAL	31.67 W 2ND MH E SUMACH ST	-
	6.98 E OF WL	-
	61.84 W 2ND MH E SUMACH ST	-
	7.71 E OF WL	-
	60.93 W 2ND MH E SUMACH ST	-
	9.04 W OF EL	-
	7.28 W 1ST MH E SUMACH ST	-
	5.74 W OF EL	-
	7.89 W 1ST MH E SUMACH ST	-

SEWER JUNCTION INFORMATION FROM SEWER VIDEO INSPECTION SEWER ID S-MA20003920			
DISTANCE FROM MH ID S-MH20003668			
3.5	W	150Ø	SOUTH CN
8.6	W	150Ø	NORTH CN
9.0	W	150Ø	SOUTH CN
25.5	W	150Ø	SOUTH CN
25.6	W	150Ø	NORTH CN
43.2	W	150Ø	NORTH CN
43.6	W	150Ø	SOUTH CN
60.4	W	150Ø	SOUTH CN
60.9	W	150Ø	NORTH CN

METRIC
WHOLE NUMBERS INDICATE MILLIMETRES
DECIMALIZED NUMBERS INDICATE METRES

WARNING
IF POWER EQUIPMENT OR EMPLOYEES ARE TO BE USED FOR EXCAVATION ON THIS PROJECT THE CONTRACTOR MUST:
1) NOTIFY THE GAS COMPANY OF THE PROPOSED LOCATION OF EXCAVATION.
2) TAKE PRECAUTION TO AVOID DAMAGE TO GAS COMPANY INSTALLATIONS.
SEE PROVINCIAL REGULATION 210/72 FOR DETAILS



200 WM	WATERMAIN	200 WM	SL, HYDRO	150 WM	WATERMAIN	150 WM
⊕	HYDRANT	⊕	MTS	⊕	HYDRANT	⊕
⊙	VALVE	⊙	TRAFFIC SIGNALS	⊙	VALVE	⊙
525 LDS	LAND DRAINAGE SEWER	525 LDS	GAS	50 GAS	300 LDS	LAND DRAINAGE SEWER
375 WWS	WASTEWATER SEWER	375 WWS	SURVEY BAR	250 WWS	WASTEWATER SEWER	250 WWS
○	MANHOLE	●	FENCE	⊕	PROFILE	
□	CATCH BASIN	■	POLE - HYDRO, MTS	⊕	GROUND ABOVE PIPE	
▽	CURB INLET	▽	CURB STOP	⊕	⊕ DITCH (NORTH & WEST)	
⊕	JUNCTIONS	⊕	GUY ANCHOR	⊕	⊕ DITCH (SOUTH & EAST)	
⊕	CULVERT	⊕	LIGHT STANDARD	⊕	GUTTER (NORTH & WEST)	
⊕	ANODE	⊕	TREE	⊕	GUTTER (SOUTH & EAST)	
EXISTING	LEGEND-PLAN	PROPOSED	EXISTING	LEGEND-PLAN	PROPOSED	EXISTING
				LEGEND-PROFILE	PROPOSED	

LOCATION APPROVED UNDERGROUND STRUCTURES	
SUPV. U/G STRUCTURES COMMITTEE	DATE
NOTE: LOCATION OF UNDERGROUND STRUCTURES AS SHOWN ARE BASED ON THE BEST INFORMATION AVAILABLE BUT NO GUARANTEE IS GIVEN THAT ALL EXISTING UTILITIES ARE SHOWN OR THAT THE GIVEN LOCATIONS ARE EXACT. CONFIRMATION OF EXISTENCE AND EXACT LOCATION OF ALL SERVICES MUST BE OBTAINED FROM THE INDIVIDUAL UTILITIES BEFORE PROCEEDING WITH CONSTRUCTION.	
B.M. ELEV.	FIELD BOOK #:
POSTED TO LBS	
DESIGNED BY DB/SC	CHECKED BY SC
DRAWN BY C/JH	APPROVED BY KZ
HOR. SCALE 1:250	RELEASED FOR CONSTRUCTION
VERTICAL SCALE 1:50	
NO. REVISIONS	DATE BY
	DATE 2008 07 08

CITY OF WINNIPEG WATER AND WASTE ENGINEERING DIVISION

DESIGNED BY DB/SC
CHECKED BY SC
DRAWN BY C/JH
APPROVED BY KZ
HOR. SCALE 1:250
VERTICAL SCALE 1:50
DATE 2008 07 08

ENGINEER'S SEAL
ORIGINAL SIGNED BY K.R. ZUREK
08/07/08
BID OPPORTUNITY: 499-2008
FILENAME: 8610.dwg
PLOT DATE: 2008 07 08

THE CITY OF WINNIPEG WATER AND WASTE DEPARTMENT

808 SEWER RENEWALS BY CIPP LINING
MANITOU BAY
2ND MH E OF SUMACH STREET TO 1ST MH E OF SUMACH STREET

SHEET 12 OF 24
CITY DRAWING NUMBER 8610