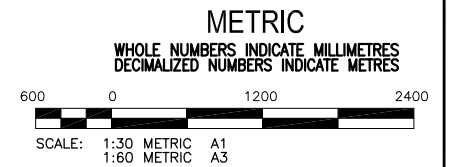
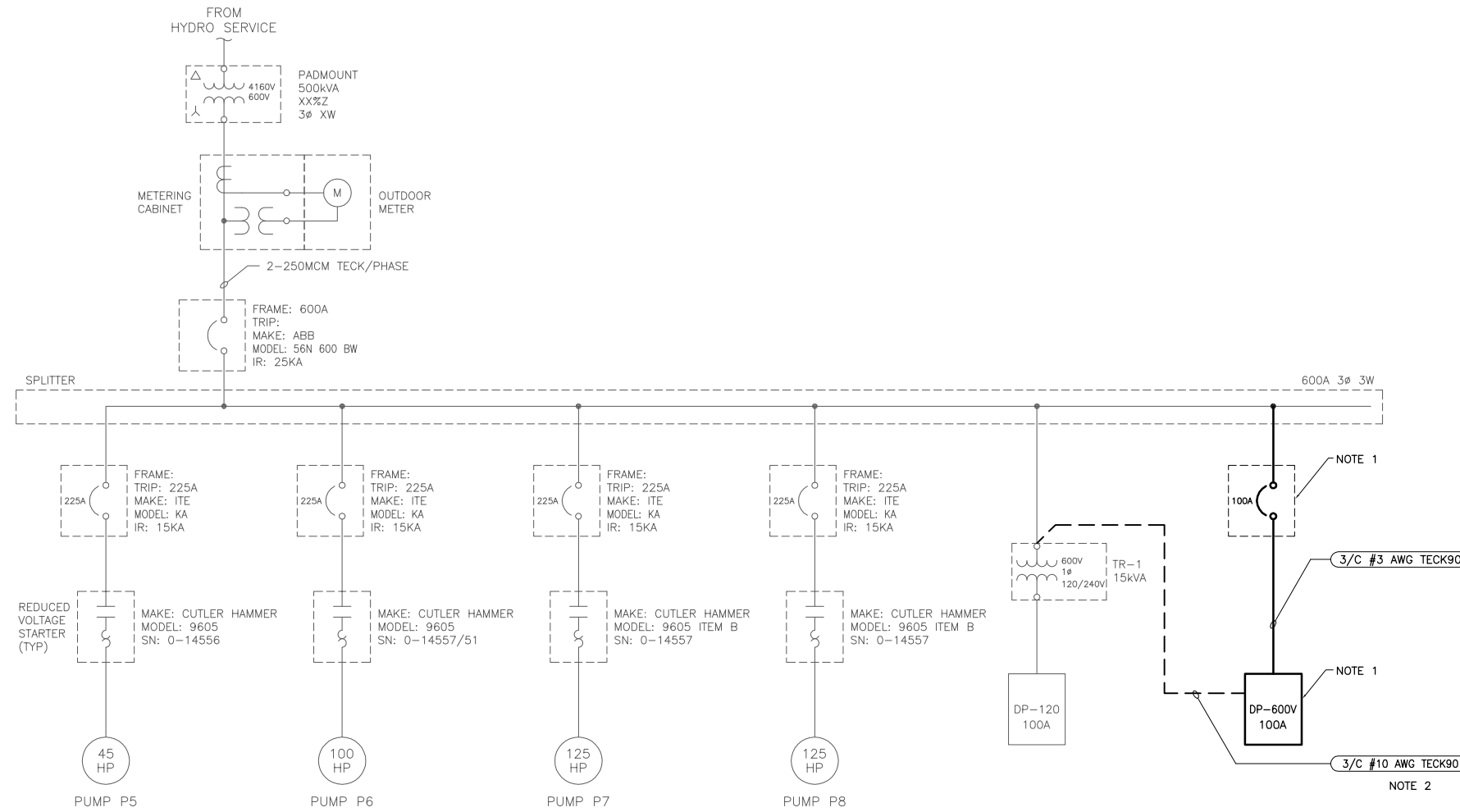


File Name: P:\Projects\2006\06-0107-15\Elect\Draws\06-0107-15-E2.dwg - Tab: E2 Plotted By: mprevoost 06/20/2008 [Fri 11:27am]

NOTES:

- SUPPLY AND INSTALL A NEW 100A BREAKER CONNECTED TO THE EXISTING SPLITTER. SUPPLY AND INSTALL A NEW 24 CIRCUIT PANEL 'DP-600' FOR 600V, 3 ϕ 3W FEEDS.
- FEED EXISTING TRANSFORMER FROM NEW PANEL 'DP-600' (30A-2P BREAKER).



APEGM
Certificate of Authorization
KGS Group
No. 245 Date: 2008-06-19

B.M.	XX-XXX
ELEV.	XXX.XXX
DESIGNED BY	AP
CHECKED BY	AP
DRAWN BY	GCN
APPROVED BY	
SCALE:	AS NOTED
ISSUED FOR CONSTRUCTION	19/06/08 AP
NO.	REVISIONS
DATE	DATE
BY	DATE

KGS GROUP
CONSULTING ENGINEERS & PROJECT MANAGERS
WINNIPEG (204) 896-1209
THUNDER BAY (807) 345-2233

ENGINEER'S SEAL
ORIGINAL DRAWING
SIGNED BY
A. PAWLIKOWICZ
19/06/08

CONSULTANT DRAWING NO.
06-0107-15-E2

THE CITY OF WINNIPEG
WATER & WASTE DEPARTMENT

BANNATYNE FLOOD PUMPING STATION BUILDING UPGRADE

ELECTRICAL SINGLE LINE DIAGRAM

SHEET **02** OF **04**
CAD FILE DRAWING NUMBER **06-0107-15-E2**
CITY DRAWING NUMBER **LD-5059**