

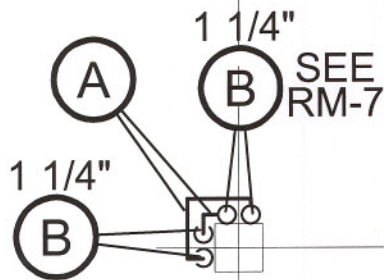
6a

5a

**SUPPLEMENTARY NOTES
(RM-2, RM-3, RM-4, RM-5, RM-6 & RM-7)**

- A. Revised routing.
- B. Revised riser location.
- C. Existing drain, vent and domestic water to remain. Serves drinking fountain at Second Floor.
- D. Extend services to relocated drinking fountain.
- E. Existing drinking fountain shown relocated +/- 2'-0".
- F. See Architectural for new enclosure.
- G. Reconnect vent.

CONDUIT



Ba

PART MAIN FLOOR PLAN NO.2 - NEW WORK

SCALE: 3/16" = 1'-0"



TPR MECHANICAL CONSULTANTS LTD.
101-1555 St James St Winnipeg, Man. R3H 1B5
Ph. 632-4068 Fax 632-4086
unies Ltd. Consulting Engineers

PAN AM POOL - EAST VESTIBULES

ADDENDUM NO.2

RM-5