

EAST VESTIBULE 102

NOTE:
EAST VESTIBULE 102 IS A DUPLICATE MIRROR COPY OF EAST VESTIBULE 101

EAST VESTIBULE 101

KEY PLAN
NTS

GENERAL NOTES:

GENERAL CONTRACTOR TO SITE MEASURE & VERIFY ALL DIMENSIONS, OPENINGS, COORDINATE FRAME SIZES WITH MANUFACTURER, AND ADVISE THE CONTRACT ADMINISTRATOR OF ANY DISCREPANCIES.

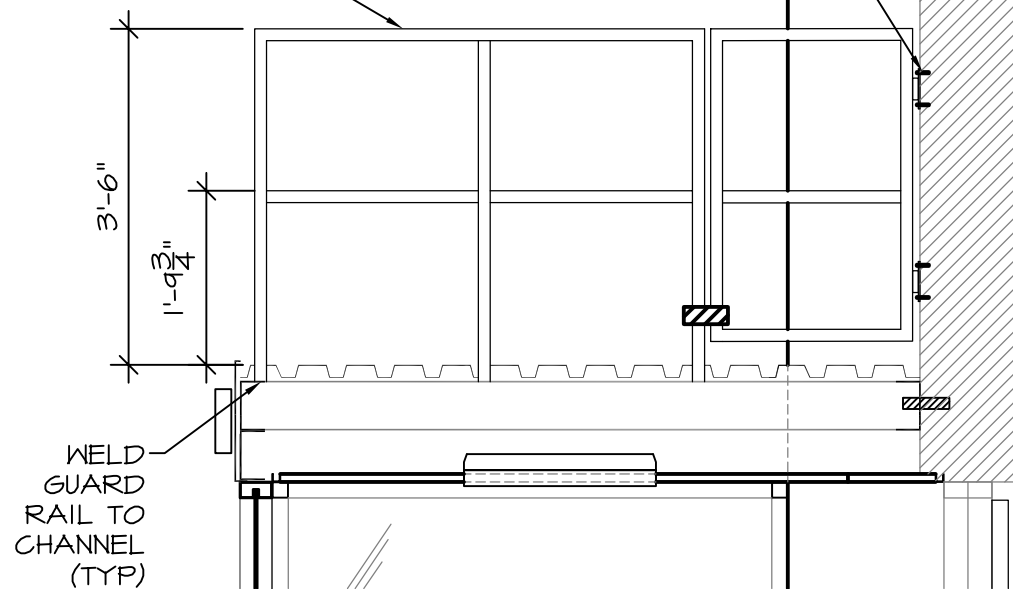
ENSURE SERVICING TO MAINTENANCE OF MECHANICAL UNITS CONFORMS TO LATEST CODE FOR FALL PROTECTION PLUS WORK PLACE HEALTH & SAFETY REGULATIONS.

FASTEN HINGE TO WALL WITH $\frac{3}{8}$ " HILTI QUICK BOLTS (4" EMBEDMENT MIN 8" TO BOTTOM EDGE OF PRECAST PANEL) (TYP)

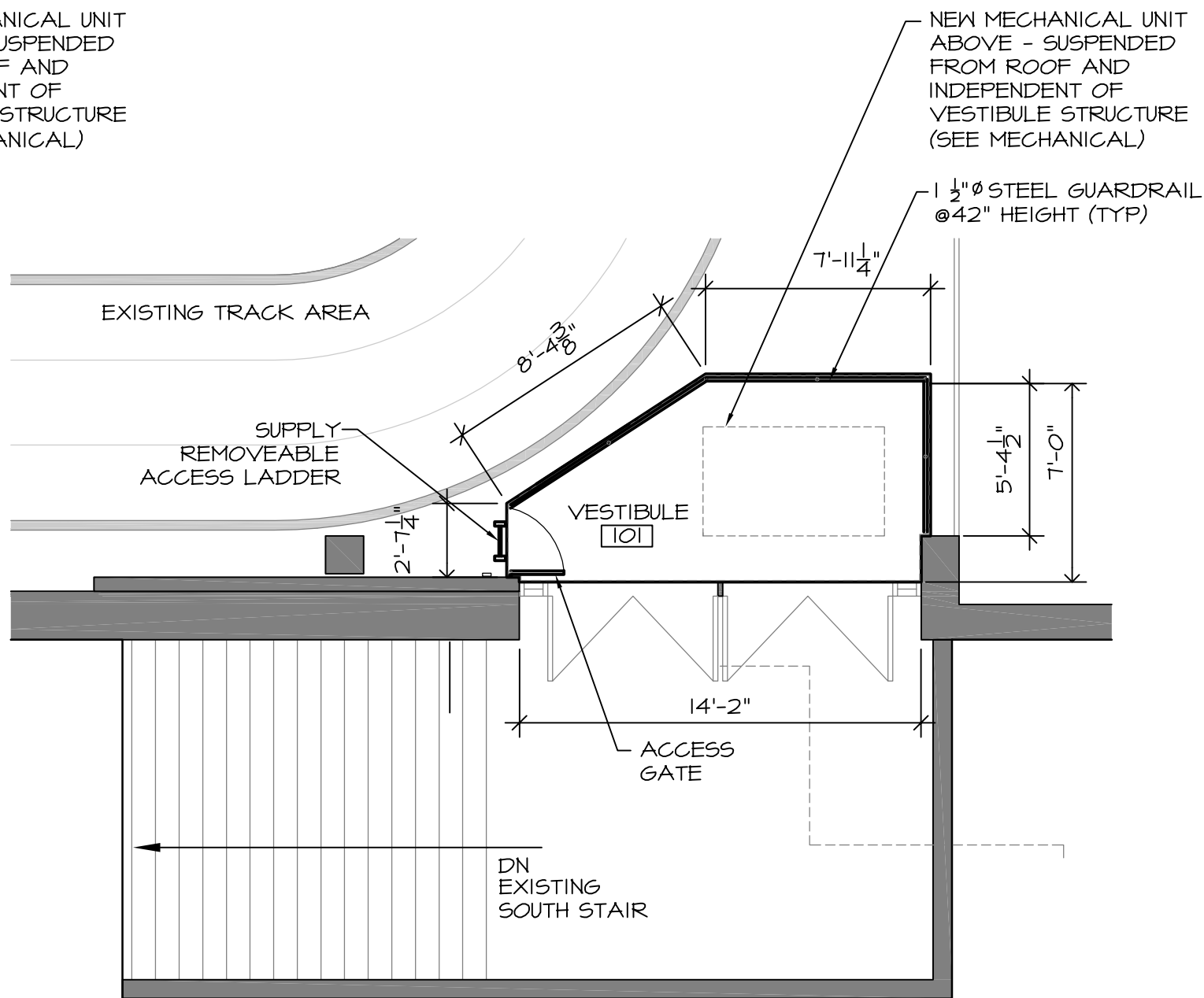
NEW MECHANICAL UNIT ABOVE - SUSPENDED FROM ROOF AND INDEPENDENT OF VESTIBULE STRUCTURE (SEE MECHANICAL)

NEW MECHANICAL UNIT ABOVE - SUSPENDED FROM ROOF AND INDEPENDENT OF VESTIBULE STRUCTURE (SEE MECHANICAL)

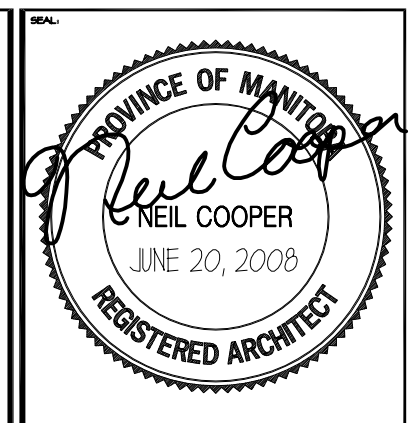
SAFETY RAIL & LOCKABLE ACCESS GATE AS PER MANUFACTURER



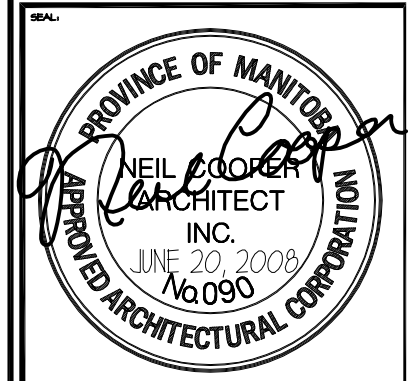
PARTIAL SOUTH ELEVATION
 $1/2" = 1'-0"$



EAST VESTIBULE ROOF PLAN
 $3/16" = 1'-0"$



REV	DESCRIPTION	DATE	BY
0	ISSUED FOR TENDER	JUN 20, 2008	DG



THIS DRAWING MUST NOT BE SCALED.
THE GENERAL CONTRACTOR SHALL VERIFY ALL DIMENSIONS, DATINGS AND LEVELS PRIOR TO COMMENCEMENT OF WORK AND IS HELD RESPONSIBLE FOR REPORTING ANY DISCREPANCY OR OMISSION TO NEIL COOPER ARCHITECT INC IMMEDIATELY.
THIS DRAWING IS THE EXCLUSIVE PROPERTY OF NEIL COOPER ARCHITECT INC AND CAN BE REPRODUCED ONLY WITH THE PERMISSION OF NEIL COOPER ARCHITECT INC, IN WHICH CASE THE REPRODUCTION MUST BEAR THEIR NAME AS THE ARCHITECTURAL FIRM.

PROJECT: **EAST VESTIBULE ROOF PLAN**
PAN AM POOL VESTIBULES
25 Poseiden Bay - Winnipeg, MB

Neil Cooper Architect Inc.
10-395 Berry Street, Winnipeg, Manitoba R3J 1N6

Tuplin Group Inc.
33-101 Hutchings Street, Winnipeg, Manitoba R2X 2V4

DRAWN BY: DG	CHECKED BY: NC	SHEET NO: A22	REV NO: R0
DATE: JUNE 20, 2008	SCALE: As Noted		
FILE: 07051/Contract Doc/Contract Dwgs/Arch Dwgs/VES-A2.2R0.dwg			