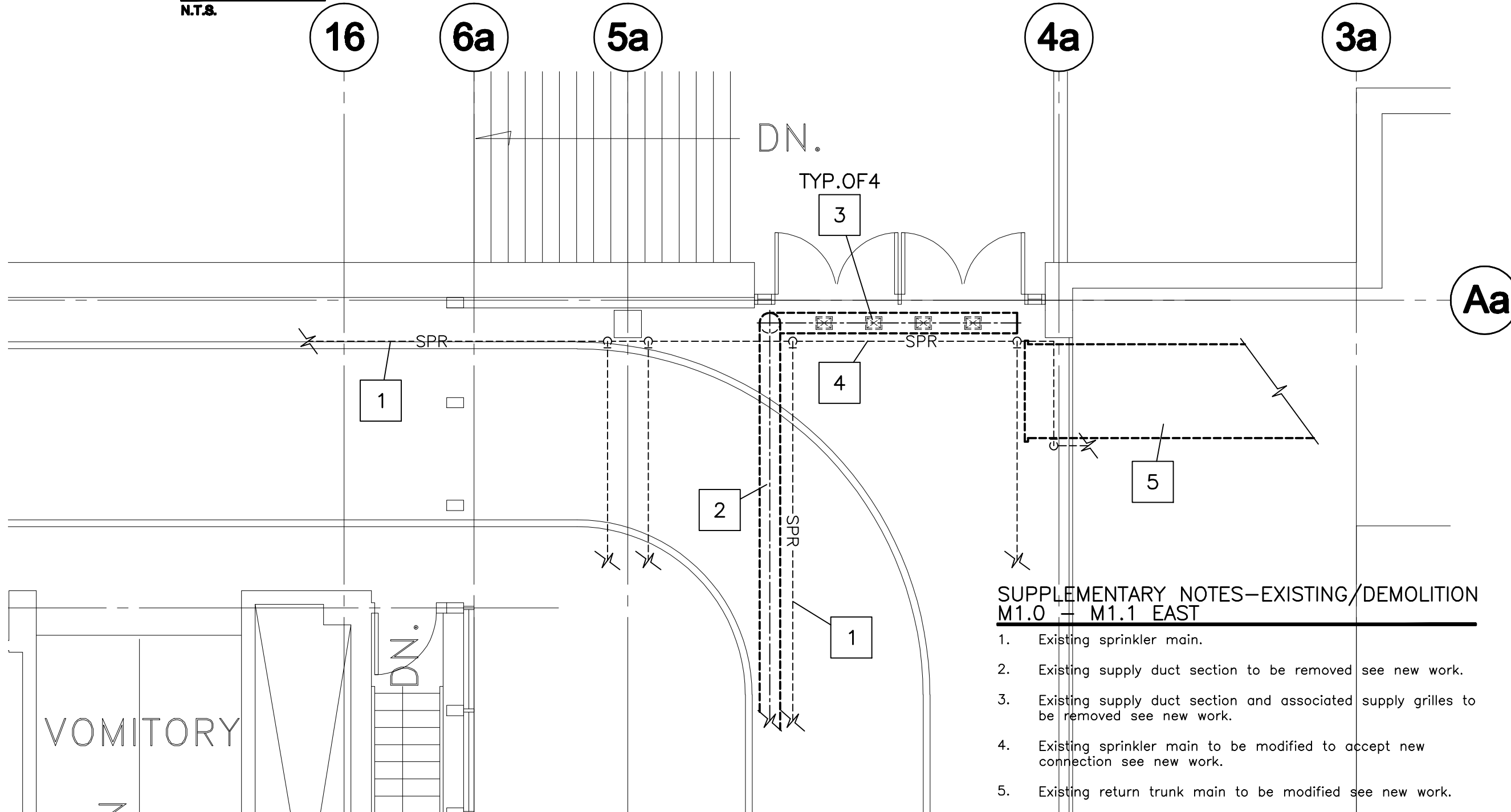


**KEY PLAN**  
N.T.S.



**SUPPLEMENTARY NOTES—EXISTING/DEMOLITION  
M1.0 – M1.1 EAST**

1. Existing sprinkler main.
2. Existing supply duct section to be removed see new work.
3. Existing supply duct section and associated supply grilles to be removed see new work.
4. Existing sprinkler main to be modified to accept new connection see new work.
5. Existing return trunk main to be modified see new work.

REV	DESCRIPTION	DATE	BY
4	ISSUED FOR TENDER	13 JUN/08	BP/RP
3	ISSUED FOR REVIEW	10 APR./08	BP/RP
2	ISSUED FOR TENDER	10 DEC./07	BP/RP
1	ISSUED FOR REVIEW		BP/RP

**TPR MECHANICAL CONSULTANTS LTD.**  
101-1555 ST. JAMES STREET, R3H 1B5  
Ph. 632-4088 Fax. 632-4088

**unies Ltd. Consulting Engineers**

THIS DRAWING MUST NOT BE SCALED.  
THE GENERAL CONTRACTOR SHALL VERIFY ALL DIMENSIONS, DATUMS AND LEVELS PRIOR TO COMMENCEMENT OF WORK AND IS HELD RESPONSIBLE FOR REPORTING ANY DISCREPANCY OR OMISSION TO NEIL COOPER ARCHITECT INC IMMEDIATELY.  
THIS DRAWING IS THE EXCLUSIVE PROPERTY OF NEIL COOPER ARCHITECT INC AND CAN BE REPRODUCED ONLY WITH THE PERMISSION OF NEIL COOPER ARCHITECT INC. IN WHICH CASE THE REPRODUCTION MUST BEAR THEIR NAME AS THE ARCHITECTURAL FIRM.

DRAWING: **PART SECOND  
FLOOR PLAN NO.2  
EXISTING DEMOLITION**

PROJECT: **PAN AM POOL  
EAST VESTIBULES**  
25 Poseiden Bay – Winnipeg, MB

**Neil Cooper Architect Inc.**  
10-395 Barry Street, Winnipeg, Manitoba R3J 1N6

**Tuplin Group Inc.**  
20-091 Mainway Street, Winnipeg, Manitoba R2K 2M4

DRAWN BY: lp	CHECKED BY: BP/RP	SHEET NO: M1.1R4	REV NO:
DATE: 13 JUNE 2008			
SCALE: As Noted			
FILE:			

**PART SECOND FLOOR PLAN NO.2 - EXISTING DEMOLITION**  
SCALE: 3/16" = 1'-0"