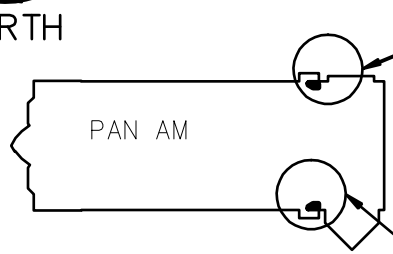


16 6a 5a 4a 3a

**APEGM**  
 Certificate of Authorization  
 Unies Ltd.  
 No. 186 Expiry: April 30, 2009



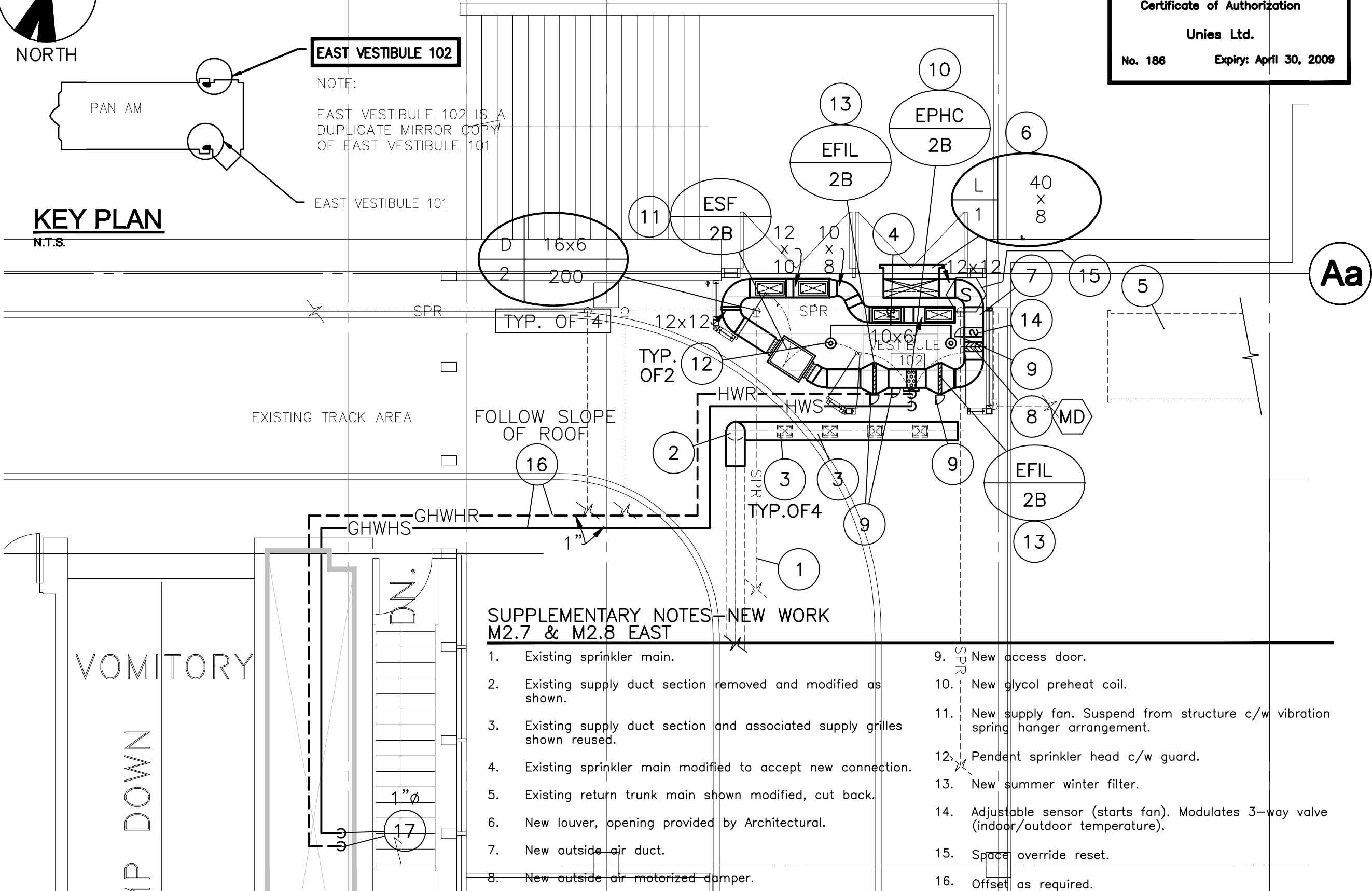
**EAST VESTIBULE 102**

NOTE:  
 EAST VESTIBULE 102 IS A  
 DUPLICATE MIRROR COPY  
 OF EAST VESTIBULE 101

EAST VESTIBULE 101

**KEY PLAN**

N.T.S.



**SUPPLEMENTARY NOTES—NEW WORK  
 M2.7 & M2.8 EAST**

- |   |  |
|---|--|
| <ol style="list-style-type: none"> <li>1. Existing sprinkler main.</li> <li>2. Existing supply duct section removed and modified as shown.</li> <li>3. Existing supply duct section and associated supply grilles shown reused.</li> <li>4. Existing sprinkler main modified to accept new connection.</li> <li>5. Existing return trunk main shown modified, cut back.</li> <li>6. New louver, opening provided by Architectural.</li> <li>7. New outside air duct.</li> <li>8. New outside air motorized damper.</li> </ol> | <ol style="list-style-type: none"> <li>9. SPR New access door.</li> <li>10. New glycol preheat coil.</li> <li>11. New supply fan. Suspend from structure c/w vibration spring hanger arrangement.</li> <li>12. Pendant sprinkler head c/w guard.</li> <li>13. New summer winter filter.</li> <li>14. Adjustable sensor (starts fan). Modulates 3-way valve (indoor/outdoor temperature).</li> <li>15. Space override reset.</li> <li>16. Offset as required.</li> <li>17. Up from Main Floor.</li> </ol> |
|---|--|

**PART SECOND FLOOR PLAN NO.2 - NEW WORK**

SCALE: 3/16" = 1'-0"

REV	DESCRIPTION	DATE	BY
4	ISSUED FOR TENDER	13 JUN/08	BP/RP
3	ISSUED FOR REVIEW	10 APR./08	BP/RP
2	ISSUED FOR TENDER	10 DEC./07	BP/RP
1	ISSUED FOR REVIEW		BP/RP

TPR MECHANICAL CONSULTANTS LTD.  
 101-1555 ST. JAMES STREET, R3H 1B5  
 Ph. 632-4088 Fax. 632-4088  
**unies Ltd.** Consulting Engineers

THIS DRAWING MUST NOT BE SCALED.  
 THE GENERAL CONTRACTOR SHALL VERIFY ALL DIMENSIONS, DATUMS AND LEVELS PRIOR TO COMMENCEMENT OF WORK AND IS HELD RESPONSIBLE FOR REPORTING ANY DISCREPANCY OR OMISSION TO NEIL COOPER ARCHITECT INC IMMEDIATELY.  
 THIS DRAWING IS THE EXCLUSIVE PROPERTY OF NEIL COOPER ARCHITECT INC AND CAN BE REPRODUCED ONLY WITH THE PERMISSION OF NEIL COOPER ARCHITECT INC. IN WHICH CASE THE REPRODUCTION MUST BEAR THEIR NAME AS THE ARCHITECTURAL FIRM.

DRAWING: **PART SECOND FLOOR PLAN NO.2 NEW WORK**  
 PROJECT: **PAN AM POOL EAST VESTIBULES**  
 25 Poseiden Bay - Winnipeg, MB

**Neil Cooper Architect Inc.**  
 10-395 Bazy Street, Winnipeg, Manitoba R3J 1N6

**Tuplin Group Inc.**  
 20-091 Mainway Street, Winnipeg, Manitoba R2G 2K4

DRAWN BY: ip	CHECKED BY: BP/RP	SHEET NO: M2.8R4	REV NO:
DATE: 13 JUNE 2008	SCALE: As Noted		
FILE:			