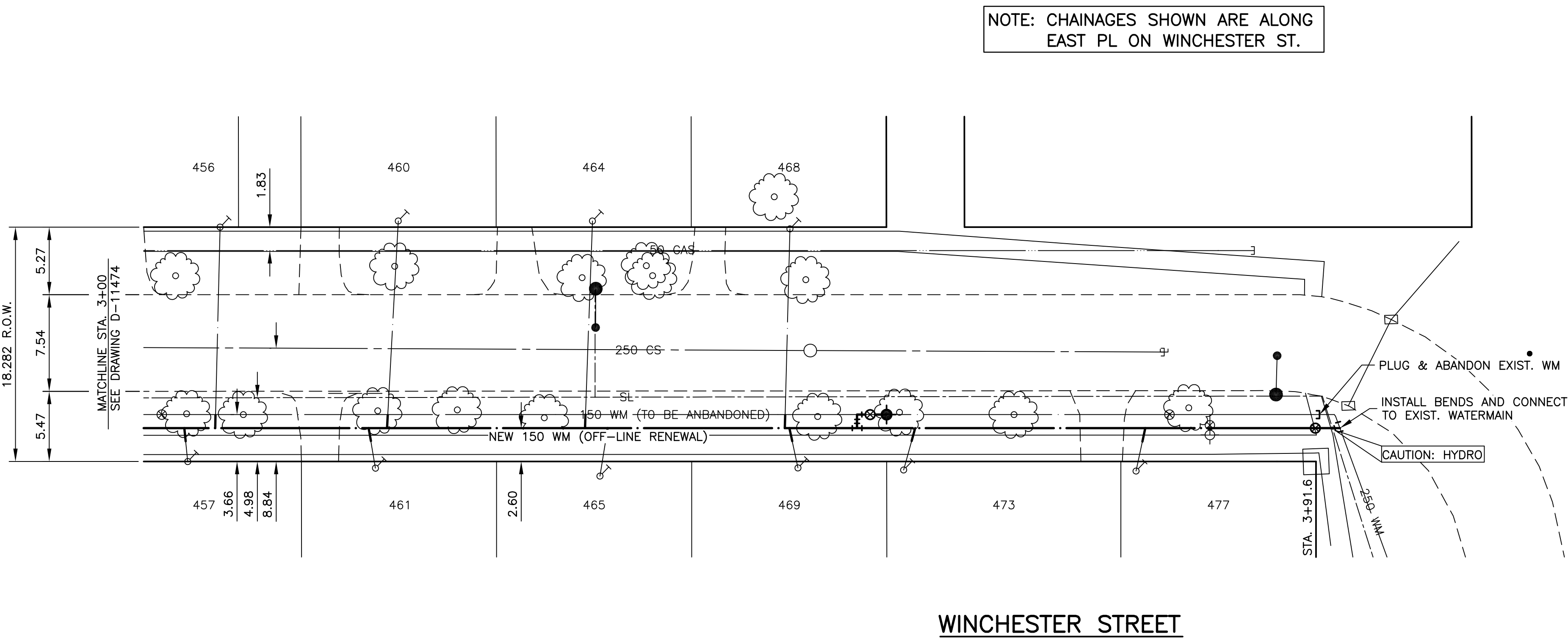


EXISTING SEWER SERVICE LOCATION RECORDS		
ADDRESS	SIZE/TYPE	SERVICE LOCATION AT PL
NO RECORD	NO RECORD	NO RECORD

EXISTING WATER SERVICE LOCATION RECORDS				
ADDRESS	SIZE/TYPE	SHORT/LONG	CORP. LOCATION	COMMENTS
456 WINCHESTER	20 COPPER	4.6 S/NPL	NO RECORD	
457 WINCHESTER	20 COPPER	4.0 N/SPL	NO RECORD	
460 WINCHESTER	20 COPPER	4.9 N/SPL	NO RECORD	
461 WINCHESTER	20 COPPER	3.0 N/SPL	NO RECORD	
464 WINCHESTER	20 COPPER	4.9 N/SPL	4.0 S/NHL	
465 WINCHESTER	20 COPPER	5.5 S/NPL	0.6 OF CS	
468 WINCHESTER	20 COPPER	5.5 S/NPL	NO RECORD	
469 WINCHESTER	20 COPPER	5.2 S/NPL	NO RECORD	
473 WINCHESTER	20 COPPER	1.6 S/SPL	0.9 N CURB BOX	
477 WINCHESTER	20 COPPER	1.2 S/SPL	NO RECORD	



- CONSTRUCTION NOTES:**
1. EXPOSE EXISTING WATERMAIN & CONFIRM INVERTS PRIOR TO CONSTRUCTION.
 2. LOCATION OF ALL SERVICES TO BE CONFIRMED IN THE FIELD.
 3. INSTALL WATERMAIN BY TRENCHLESS METHODS.
 4. TRENCHES & EXCAVATIONS WITHIN 1 METRE OF A PAVED AREA INCLUDING SIDEWALKS SHALL BE CLASS 3 BACKFILL.
 5. ALL MATERIALS SHALL CONFORM TO THE CITY OF WINNIPEG STANDARD CONSTRUCTION SPECIFICATIONS.
 6. MINIMUM COVER TO TOP OF WATERMAIN SHALL BE 2.4 m.
 7. REPLACE ALL EXISTING LEAD SERVICES FROM PROPOSED WATERMAIN TO PL.
 8. NOTIFY ALL RESIDENTS AND BUSINESSES 24 HOURS IN ADVANCE OF ANY WATER SHUTDOWNS OR DISRUPTION OF SERVICE.

WARNING

- IF POWER EQUIPMENT OR EXPLOSIVES ARE TO BE USED FOR EXCAVATION ON THIS PROJECT THE CONTRACTOR MUST:
1. NOTIFY THE GAS COMPANY OF THE PROPOSED LOCATION OF EXCAVATION.
 2. TAKE PRECAUTION TO AVOID DAMAGE TO GAS COMPANY INSTALLATIONS SEE PROVINCIAL REGULATION 210/72 FOR DETAILS

METRIC

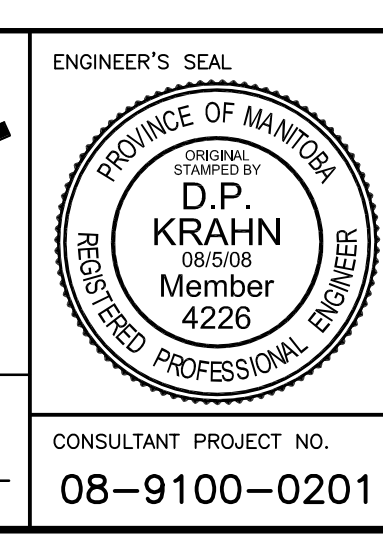
WHOLE NUMBERS INDICATE MILLIMETRES
DECIMALIZED NUMBERS INDICATE METRES



150 mm W.M.	WATERMAIN	150 mm W.M.	HYDRO	150 mm W.M.	WATERMAIN	150 mm W.M.
⊗	HYDRANT VALVE	⊗	M.T.S. CONCRETE ASPHALT	+	HYDRANT VALVE	+
⊗	LAND DRAINAGE SEWER	⊗	PROPERTY LINE SURVEY BAR	⊗	LAND DRAINAGE SEWER	⊗
⊗	WASTE WATER SEWER	⊗	SERVICE VALVE	⊗	WASTE WATER SEWER	⊗
○	MANHOLE	○	TREE	○	MANHOLE	○
□	CATCH BASIN	□	LIGHT STANDARD	□	CATCH BASIN	□
▽	CURB INLET	▽	FENCE	▽	CURB INLET	▽
⊕	JUNCTIONS	⊕	GUY ANCHOR	⊕	JUNCTIONS	⊕
⊕	CULVERT	⊕		⊕	CULVERT	⊕
⊕	GAS	⊕		⊕	GAS	⊕
---	EXISTING LEGEND-PLAN	---	PROPOSED LEGEND-PLAN	---	EXISTING LEGEND-PROFILE	---
---		---		---		---

UNDERGROUND STRUCTURES		B.M. ELEV.
SUPPLY, U/G STRUCTURES COMMITTEE	DATE	
NOTE: LOCATION OF UNDERGROUND STRUCTURES AS SHOWN ARE BASED ON THE BEST INFORMATION AVAILABLE. BUT NO GUARANTEE IS GIVEN THAT ALL EXISTING UTILITIES ARE SHOWN OR THAT THE GIVEN LOCATIONS ARE EXACT. CONFIRMATION OF EXISTENCE AND EXACT LOCATION OF ALL SERVICES MUST BE OBTAINED FROM THE INDIVIDUAL UTILITIES BEFORE PROCEEDING WITH CONSTRUCTION.		
2	ISSUED FOR TENDER	08-5-08 S.C.C.
1	ISSUED FOR FINAL REVIEW	07-22-08 S.C.C.
NO.	REVISIONS	DATE BY

DESIGNED BY	C.L.P.
DRAWN BY	C.L.P.
CHECKED BY	S.C.C.
APPROVED BY	ORIGINAL SIGNED BY D.P.K.
HOR. SCALE	1 : 250
VERTICAL	1 : 50
DATE	JULY 21, 2008



THE CITY OF WINNIPEG
WATER AND WASTE DEPARTMENT

2008 WATERMAIN RENEWALS, SEWER RENEWALS AND REPAIRS, CONTRACT 19

WINCHESTER STREET
220m S OF SILVER AV. TO SILVER AV.

CITY DRAWING NUMBER **D-11475**
SHEET **4** OF **27**

BID OPPORTUNITY **525-2008**

CONSULTANT PROJECT NO. **08-9100-0201**