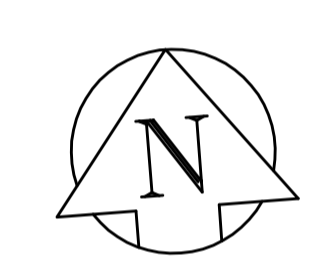
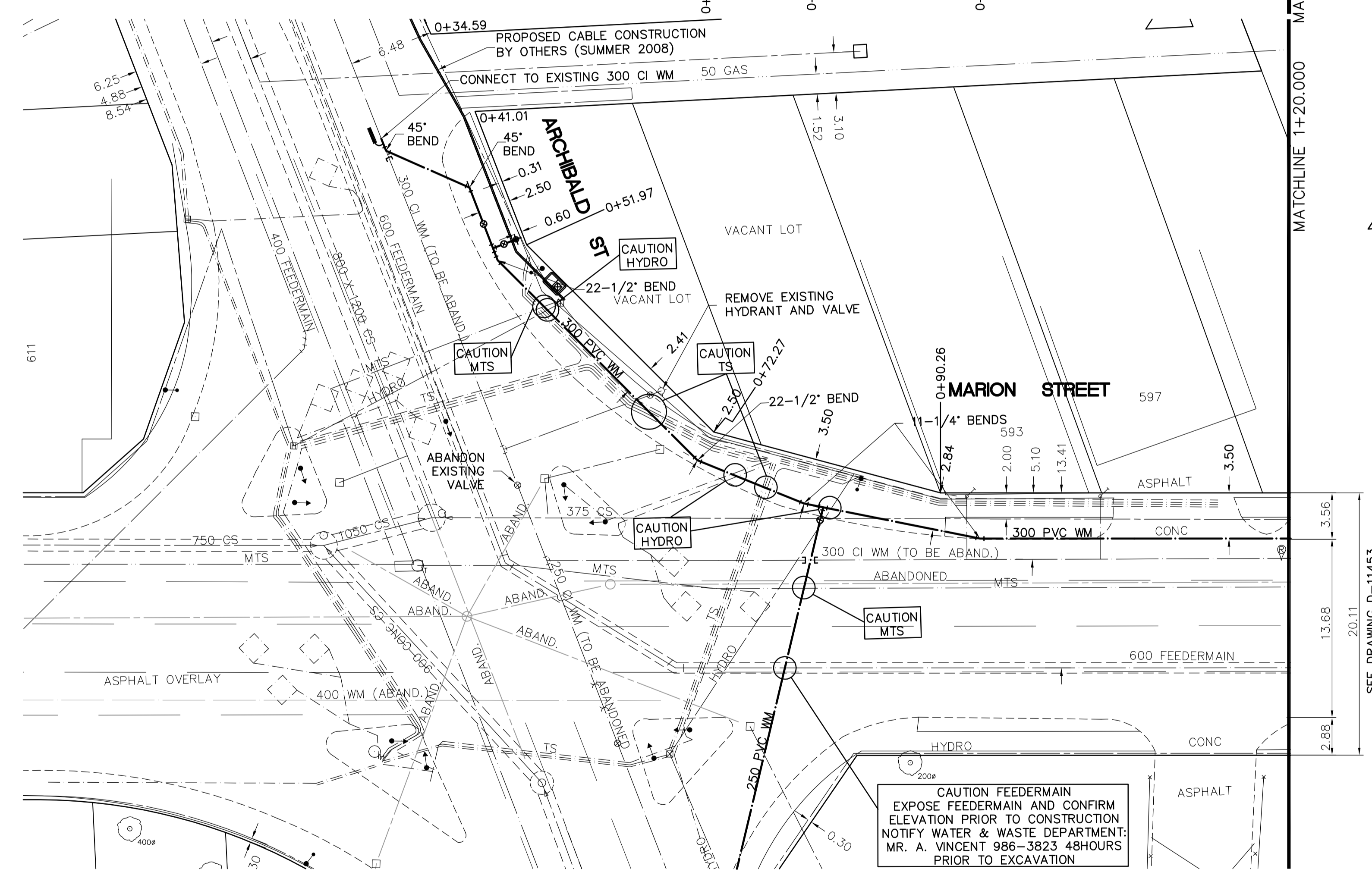
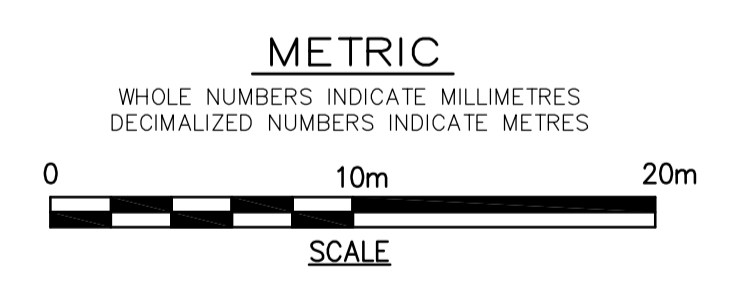


- CONSTRUCTION NOTES**
1. EXPOSE WATERMAIN CONNECTIONS AND CONFIRM INVERTS PRIOR TO CONSTRUCTION.
 2. INSTALL WATERMAIN BY TRENCHLESS METHODS.
 3. ALL MATERIALS SHALL CONFORM TO THE CITY OF WINNIPEG STANDARD CONSTRUCTION SPECIFICATIONS.
 4. MINIMUM COVER TO TOP OF PROPOSED WATERMAIN SHALL BE 2.5m FROM STREET CENTERLINE.
 5. INSTALL ALL HYDRANTS WITH FLANGE ELEVATION 50mm-150mm ABOVE FINISHED GRADE.
 6. REPLACE ALL EXISTING LEAD SERVICES FROM THE PROPOSED WATERMAIN TO PROPERTY LINE.
 7. NOTIFY ALL AFFECTED RESIDENTS AND BUSINESSES 24 HOURS IN ADVANCE OF ANY WATER SHUTDOWN OR DISRUPTION OF SERVICE.
 8. LOCATION OF WATER SERVICES SHOWN ON DRAWINGS ARE APPROXIMATE. THE CONTRACTOR SHALL FIELD LOCATE ALL WATER SERVICES PRIOR TO CONSTRUCTION.
 9. ALL VALVES SHALL BE BLACK TOP (CLOCKWISE TO CLOSE).
 10. BACKFILL UNDER OR WITHIN 1.0m OF PAVEMENTS ON ARCHIBALD OR MARION SHALL BE CLASS 1 BACKFILL EXCEPT AS NOTED. BACKFILL UNDER SIDEWALKS SHALL BE CLASS 3 BACKFILL.



APEGM
 Certificate of Authorization
 Earth Tech Canada Inc.
 No. 730



ADDRESS	NATURE OF SERVICE	SIZE	MATERIAL	DISTANCE SC TO PROPERTY	BUILDING	POSITION OF SC (curb stop)		POSITION OF CC (corp)		COMMENTS:
						Long	Short	Long	Short	
597 MARION ST	COMMERCIAL	19 mm	COPPER	2.4 m	BUILDING	Long: 0.9 m W	Short: of WL	Long: CORNER OF HOUSE	Short: of	
593 MARION ST	COMMERCIAL	13 mm	COPPER	0.3 m	BUILDING	Long: 1.7 m E	Short: of WL	Long: CORNER OF HOUSE	Short: of	

EXISTING	LEGEND - PLAN	PROPOSED	EXISTING	LEGEND - PROFILE	PROPOSED
150 mm W.M.	WATERMAIN	150 mm W.M.	HYDRO	TELEPHONE	150 mm W.M.
300mm L.D.S.	LAND DRAINAGE SEWER	300mm L.D.S.	CONCRETE	ASPHALT	300mm L.D.S.
250mm W.W.S.	WASTEWATER SEWER	250mm W.W.S.	PROPERTY LINE	SURVEY BAR	250mm W.W.S.
○	MANHOLE	●	CURB STOP	TREE	○
□	CATCH BASIN	■	ANODE	CONCRETE SIDEWALK	□
▽	CURB INLET	▽	FENCE		
+	JUNCTIONS	+			
—	CULVERT	—			
—	GAS	—			

LOCATION APPROVED UNDERGROUND STRUCTURES

SUPPLY U/G STRUCTURES COMMITTEE DATE

NOTE:
 LOCATION OF UNDERGROUND STRUCTURES AS SHOWN ARE BASED ON THE BEST INFORMATION AVAILABLE, BUT NO GUARANTEE IS GIVEN THAT ALL EXISTING UTILITIES ARE SHOWN OR THAT THE GIVEN LOCATIONS ARE EXACT. CONFIRMATION OF EXISTENCE AND EXACT LOCATION OF ALL SERVICES MUST BE OBTAINED FROM THE INDIVIDUAL UTILITIES BEFORE PROCEEDING WITH CONSTRUCTION.

EARTH TECH
 Earth Tech (Canada) Inc. Winnipeg, Manitoba 204.477.5381

DESIGNED BY: GSK, GDL
 CHECKED BY: GSK

DRAWN BY: DKA
 APPROVED BY: KWF

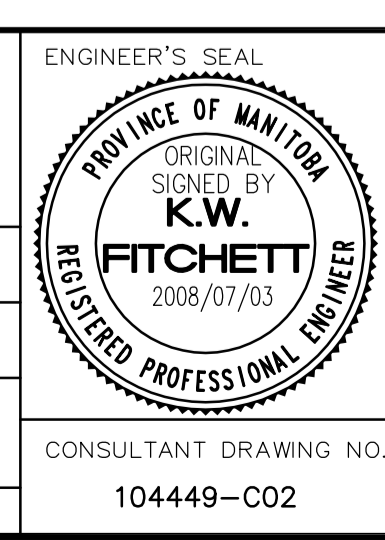
ISSUED FOR TENDER: 2008/07/03 GSK
 ISSUED FOR REVIEW: 2008/06/19 GSK

NO. REVISIONS DATE BY

HOR. SCALE: 1:250
 VERTICAL: 1:50

RELEASED FOR CONSTRUCTION BY: K. ZUREK
 DATE: 2008/07/03

CONSULTANT DRAWING NO. 104449-002



THE CITY OF WINNIPEG
 Winnipeg WATER AND WASTE DEPARTMENT

2008 WATERMAIN RENEWALS CONTRACT 5

MARION STREET
 ARCHIBALD ST. TO NICOLAS AVE.
 ARCHIBALD ST. TO STA. 1+20

SHEET 2 OF 12
 CITY DRAWING NUMBER D-11452