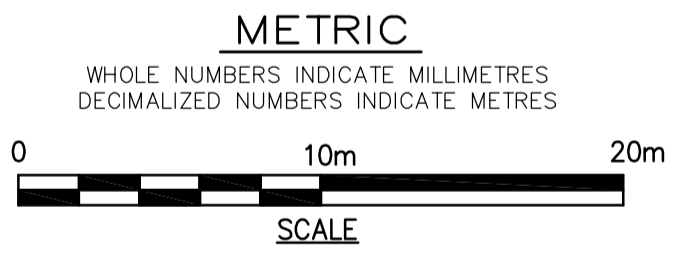
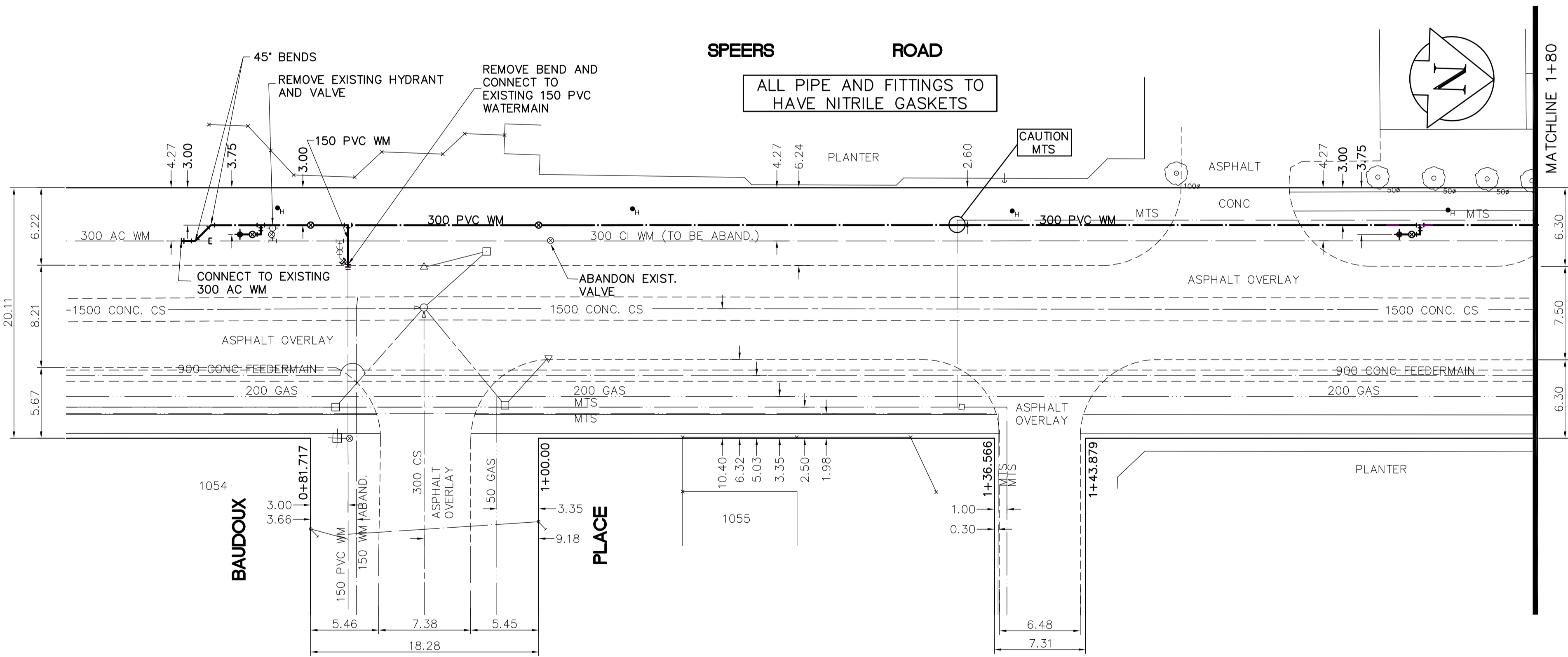


CONSTRUCTION NOTES

1. EXPOSE WATERMAIN CONNECTIONS AND CONFIRM INVERTS PRIOR TO CONSTRUCTION.
2. INSTALL WATERMAIN BY TRENCHLESS METHODS.
3. ALL MATERIALS SHALL CONFORM TO THE CITY OF WINNIPEG STANDARD CONSTRUCTION SPECIFICATIONS.
4. MINIMUM COVER TO TOP OF PROPOSED WATERMAIN SHALL BE 2.5m FROM STREET CENTERLINE.
5. INSTALL ALL HYDRANTS WITH FLANGE ELEVATION 50mm-150mm ABOVE FINISHED GRADE.
6. REPLACE ALL EXISTING LEAD SERVICES FROM THE PROPOSED WATERMAIN TO PROPERTY LINE.
7. NOTIFY ALL AFFECTED RESIDENTS AND BUSINESSES 24 HOURS IN ADVANCE OF ANY WATER SHUTDOWN OR DISRUPTION OF SERVICE.
8. LOCATION OF WATER SERVICES SHOWN ON DRAWINGS ARE APPROXIMATE. THE CONTRACTOR SHALL FIELD LOCATE ALL WATER SERVICES PRIOR TO CONSTRUCTION.
9. ALL VALVES SHALL BE BLACK TOP (CLOCKWISE TO CLOSE).
10. BACKFILL UNDER OR WITHIN 1.0m OF PAVEMENTS, INCLUDING SIDEWALKS SHALL BE CLASS 3 BACKFILL EXCEPT AS NOTED. BACKFILL IN BOULEVARDS SHALL BE CLASS 5 BACKFILL.



ADDRESS	NATURE OF SERVICE	SIZE	MATERIAL	DISTANCE SC TO PROPERTY	POSITION OF SC (curb stop)	POSITION OF CC (corp)	COMMENTS
1054 BAUDOX PL	RESIDENTIAL	19 mm	COPPER	9.6 m	Long: 3.4 m N of SL	Long: of of	CORNER OF HOUSE
1055 BAUDOX PL	RESIDENTIAL	19 mm	COPPER	10.1 m	Short: 2.3 m S of INL	Short: of of	CORNER OF HOUSE

150 mm W.W.	WATERMAIN	150 mm W.W.	HYDRO	150 mm W.W.	WATERMAIN	150 mm W.W.
+	HYDRANT	+	TELEPHONE	+	HYDRANT	+
◇	VALVE	◇	CONCRETE	◇	VALVE	◇
—	LAND DRAINAGE SEWER	—	ASPHALT	—	LAND DRAINAGE SEWER	—
- - -	WASTEWATER SEWER	- - -	PROPERTY LINE	- - -	WASTE WATER SEWER	- - -
○	MANHOLE	○	SURVEY BAR	○	Q PROFILE	○
□	CATCH BASIN	□	CURB STOP	□		□
▽	CURB INLET	▽	TREE	▽		▽
—	JUNCTIONS	—	ANODE	—		—
—	CULVERT	—	CONCRETE SIDEWALK	—		—
—	GAS	—	FENCE	—		—
—	EXISTING	—	LEGEND - PLAN	—	EXISTING	—
—	LEGEND - PLAN	—	PROPOSED	—	LEGEND - PROFILE	—
—	PROPOSED	—	EXISTING	—	PROPOSED	—

LOCATION APPROVED UNDERGROUND STRUCTURES

SUPV. U/G STRUCTURES COMMITTEE DATE _____

NOTE:
LOCATION OF UNDERGROUND STRUCTURES AS SHOWN ARE BASED ON THE BEST INFORMATION AVAILABLE, BUT NO GUARANTEE IS GIVEN THAT THE GIVEN LOCATIONS ARE EXACT. CONFIRMATION OF EXISTENCE AND EXACT LOCATION OF ALL SERVICES MUST BE OBTAINED FROM THE INDIVIDUAL UTILITIES BEFORE PROCEEDING WITH CONSTRUCTION.

B.M. ELEV. E. side of Howden Rd. N. of Humber Rd., Tbt. in S. conc. Foundation of Howden Elem. School, No. 150 Howden Rd. 1m E. and 0.2m below brick of SW cor. school, S. 232.587m.

EARTH TECH

Earth Tech (Canada) Inc. Winnipeg, Manitoba 204.477.5381

DESIGNED BY: GSK, GDL CHECKED BY: GSK

DRAWN BY: GDL APPROVED BY: KWF

RELEASED FOR CONSTRUCTION BY: K. ZUREK

HOR. SCALE: 1:250
VERTICAL: 1:50

DATE: 2008/06/19 DATE: 2008/07/03

ENGINEER'S SEAL

CONSULTANT DRAWING NO. 104449-008

THE CITY OF WINNIPEG
Winnipeg WATER AND WASTE DEPARTMENT

2008 WATERMAIN RENEWALS CONTRACT 5

10m S. OF BAUDOX PL. TO ELIZABETH RD. BAUDOX TO STA. 1+80

SHEET 8 OF 12
CITY DRAWING NUMBER D-11458