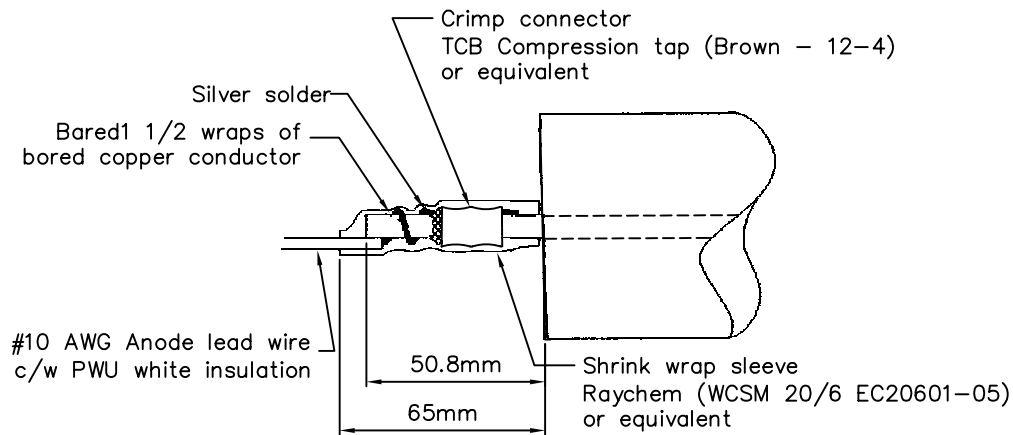
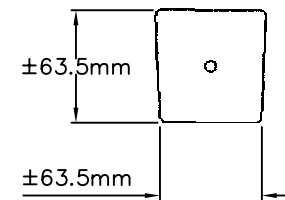


**NOTE:** The Anode Bar must not curl by more than 20mm or it will be deemed unacceptable

Galvanic Zinc Anode conforming to ASTM B 418-95 Type II



Anode Wire Connection Detail



Nominal Anode Weight: 45kg ± 1%

### METRIC

WHOLE NUMBERS INDICATE MILLIMETRES  
DECIMALIZED NUMBERS INDICATE METRES



THE CITY OF WINNIPEG  
WATER AND WASTE DEPARTMENT

**45 KG  
ZINC ANODE DETAIL**

SHEET 1 OF 2

CITY DRAWING NUMBER

F-1