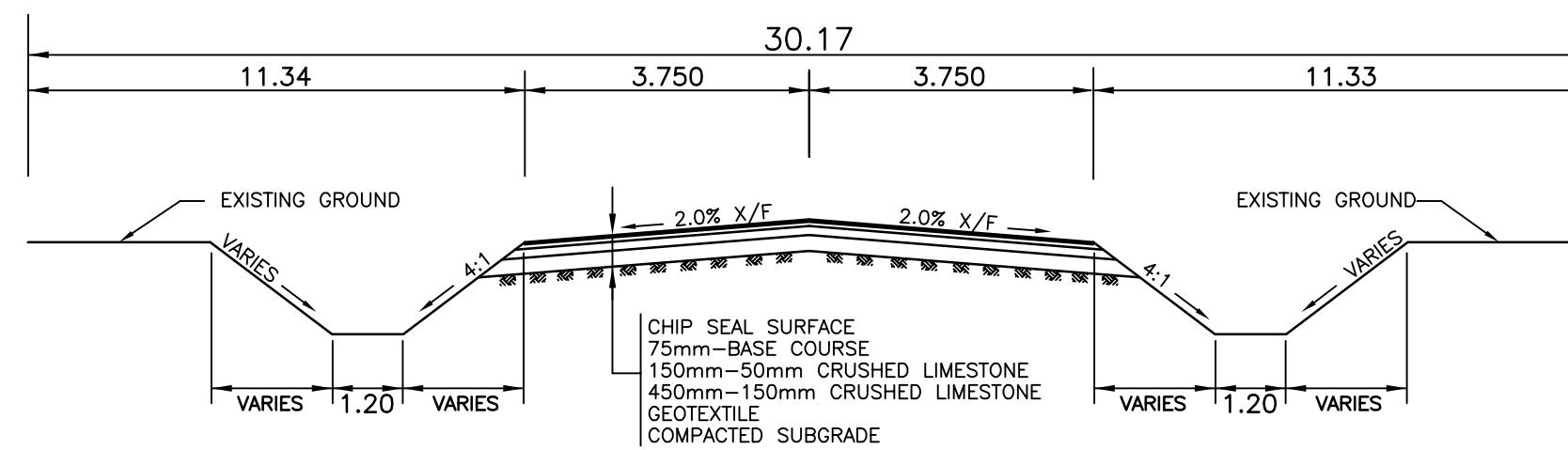


NOTES:

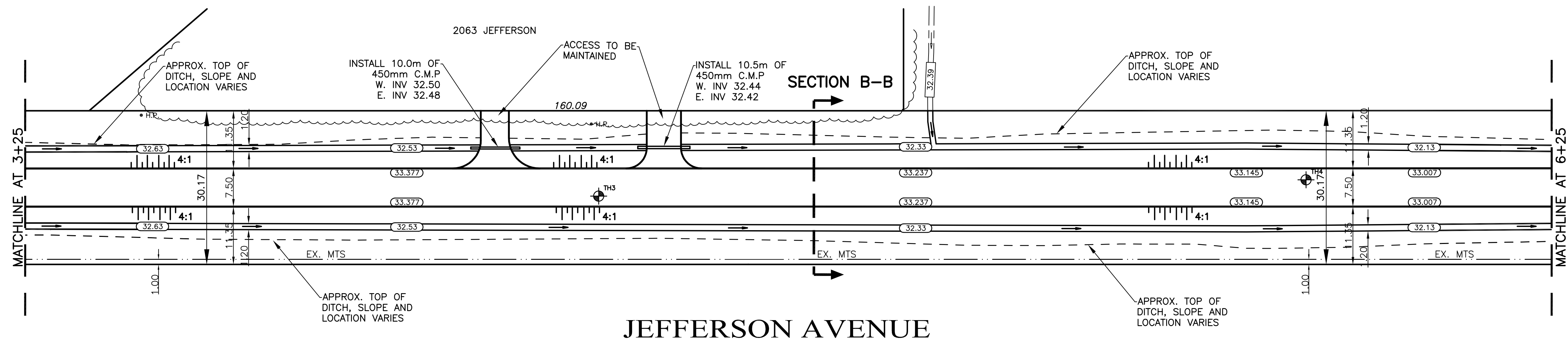
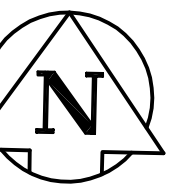
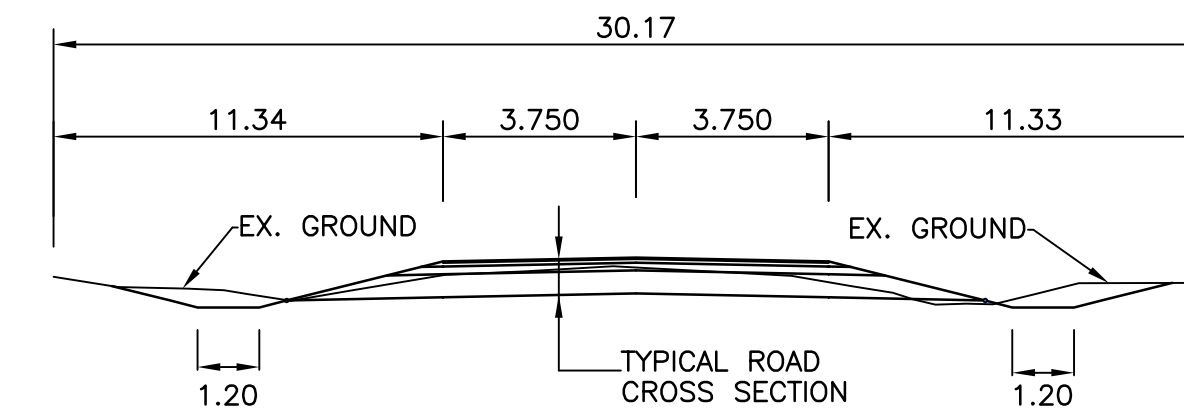
1. REGRADE EXISTING DITCHES AS DIRECTED BY CONTRACT ADMINISTRATOR
2. RENEW EXISTING APPROACHES AS DIRECTED BY CONTRACT ADMINISTRATOR

TYPICAL ROAD CROSS SECTION
N.T.S.



CHAINAGE ALONG CENTER OF ROW

SECTION B-B
N.T.S.



JEFFERSON AVENUE

BENCHMARK:
N.E. COR. KING EDWARD ST. & JEFFERSON AVE., BRASS PLUG
PLUG IN 7.6m PILE, 2.6m E. OF HYDRO TRANSMISSION LINE
ON E. SIDE OF KING EDWARD ST. & 2.3m S. OF LINE OF WOODEN
POLES ON N. SIDE OF JEFFERSON AVE.

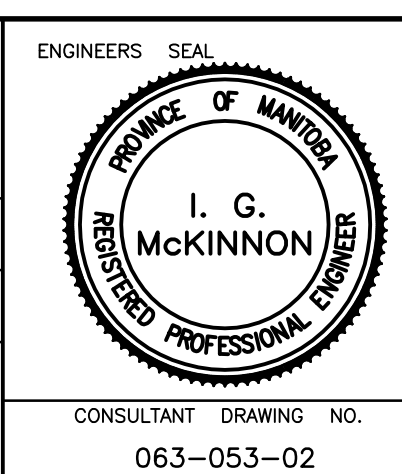
METRIC
WHOLE NUMBERS INDICATE MILLIMETRES
DECIMALIZED NUMBERS INDICATE METRES



---	WATERMAIN	---	HYDRO	---	CENTER LINE	---	LOCATION APPROVED
⊕	HYDRANT	⊕	M.T.S.	---	NORTH GUTTER LINE	---	NO. / REVISIONS
⊕	VALVE	⊕	GRAVEL/CHIP SEAL	---	SOUTH GUTTER LINE	---	DATE
---	LAND DRAINAGE SEWER	---	ASPHALT	---	NORTH DITCH	---	DATE
---	WASTE WATER SEWER	---	PROPERTY LINE	---	SOUTH DITCH	---	DATE
○	MANHOLE	○	C.B. LEAD	---	LAND DRAINAGE SEWER	---	DATE
□	CATCH BASIN	□	CULVERT	---	WATERMAIN	---	DATE
⊞	MTS	⊞	DITCH BOTTOM	---	MTS	---	DATE
---	TRAFFIC SIGNAL	---	DITCH TOP	---	GATEVALVE	---	DATE
---	STEAM HT.	---	ELEVATIONS	---	TESTHOLE	---	DATE
---	GAS	---		---		---	DATE
---	EXISTING	---	EXISTING	---	EXISTING	---	DATE
---	LEGEND - PLAN	---	LEGEND - PLAN	---	LEGEND - PROFILE	---	DATE
---	PROPOSED	---	PROPOSED	---	PROPOSED	---	DATE

DESIGNED BY	R.H.	CHECKED BY	S.M.
DRAWN BY	R.H.	APPROVED BY	I.McK
HOR. SCALE:	1:500	RELEASED FOR CONSTRUCTION	
VERT. SCALE:	1:25	DATE	JULY 2008

GENIVAR
200 TACHE AVENUE WINNIPEG, MANITOBA R2H 1A7
PH: (204)-233-2113 FAX: (204)-233-2080



THE CITY OF WINNIPEG
PUBLIC WORKS DEPARTMENT

2008 GRAVEL ROAD RENEWALS

JEFFERSON AVENUE
FROM MATCHLINE AT 3+25
TO MATCHLINE AT 6+25

CITY DRAWING NO. SHEET 2 OF 4
558-2008