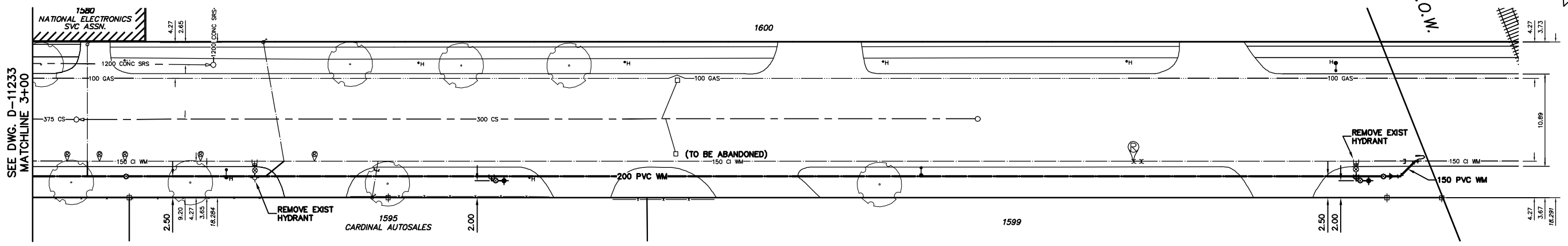


NOTE: CHAINAGES SHOWN ARE ALONG E. R. OF ERIN ST.

ERIN STREET



WATER SERVICE INFORMATION

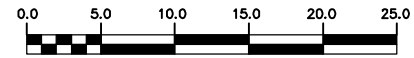
ADDRESS	SIZE(mm) & TYPE (STREET)	SIZE(mm) & TYPE (PROP)	SHORT & LONG MEASUREMENT	CORP. LOCATION	REMARKS
1580 ERIN ST COMMERCIAL	20 COPPER	25 COPPER	6.71 SNL BLDG	OPP S/C	-
1595 ERIN ST COMMERCIAL	25 COPPER	25 COPPER	206.43>NNL RICHARD	0.75 N OF S/C	-
1599 ERIN ST COMMERCIAL	20 COPPER	20 COPPER	240.0>NNL RICHARD	2.45 N OF S/C	SERVICE NOT IN USE
1600 ERIN ST EMPTY LOT	-	-	-	-	NO SERVICE INFORMATION AVAILABLE

* SERVICES TO BE RENEWED TO R UPON CONFIRMATION BY THE CONTRACTOR OF EXISTING 1/2" COPPER OR LEAD SERVICE. OBTAIN APPROVAL FROM CONTRACT ADMINISTRATOR PRIOR TO RENEWAL.

FOR CONSTRUCTION NOTES SEE DRAWING D-11230

METRIC
WHOLE NUMBERS INDICATE MILLIMETRES
DECIMALIZED NUMBERS INDICATE METRES

NOTE: ALL VALVES TO BE INSTALLED COUNTERCLOCKWISE TO CLOSE



WARNING
IF POWER EQUIPMENT OR EXPLOSIVES ARE TO BE USED FOR EXCAVATION ON THIS PROJECT THE CONTRACTOR MUST:
1) NOTIFY THE GAS COMPANY OF THE PROPOSED LOCATION OF EXCAVATION.
2) TAKE PRECAUTION TO AVOID DAMAGE TO GAS COMPANY INSTALLATIONS.
SEE PROVINCIAL REGULATION 210/72 FOR DETAILS

EXISTING	LEGEND-PLAN	PROPOSED	EXISTING	LEGEND-PLAN	PROPOSED	EXISTING	LEGEND-PROFILE	PROPOSED
200 WM	WATERMAIN	200 WM	SL	HYDRO	150 WM	WATERMAIN	150 WM	
525 LDS	LAND DRAINAGE SEWER	525 LDS	MTS	TRAFFIC SIGNALS	300 LDS	LAND DRAINAGE SEWER	300 LDS	
375 WWS	WASTEWATER SEWER	375 WWS	GAS	SURVEY BAR	250 WWS	WASTEWATER SEWER	250 WWS	
○	MANHOLE	●	* * * * *	FENCE	⊕	PROFILE		
□	CATCH BASIN	■	* * H * T	POLE - HYDRO, MTS	⊖	GROUND ABOVE PIPE		
▽	CURB INLET	▽	○	CURB STOP	⊕	⊕ DITCH (NORTH & WEST)		
▽	REDUCER	▽	⊕	GUY ANCHOR	⊕	⊕ DITCH (SOUTH & EAST)		
X	COUPLER	X	⊕	LIGHT STANDARD	⊕	⊕ GUTTER (NORTH & WEST)		
⊕	ANODE	⊕	⊕	TREE	⊕	⊕ GUTTER (SOUTH & EAST)		

LOCATION APPROVED	DATE
UNDERGROUND STRUCTURES	
SUPV. U/G STRUCTURES COMMITTEE	

NOTE:
LOCATION OF UNDERGROUND STRUCTURES AS SHOWN ARE BASED ON THE BEST INFORMATION AVAILABLE BUT NO GUARANTEE IS GIVEN THAT ALL EXISTING UTILITIES ARE SHOWN OR THAT THE GIVEN LOCATIONS ARE EXACT. CONFIRMATION OF EXISTENCE AND EXACT LOCATION OF ALL SERVICES MUST BE OBTAINED FROM THE INDIVIDUAL UTILITIES BEFORE PROCEEDING WITH CONSTRUCTION.

DESIGNED BY	CHECKED BY
SGL	SC
DRAWN BY	APPROVED BY
CJH	KZ
HOR. SCALE	RELEASED FOR CONSTRUCTION
1:250	SIGNED BY K. ZUREK
VERTICAL	DATE
1:50	2008 03 18

ENGINEER'S SEAL
ORIGINAL SIGNED BY
S.R.J. COURNOYER
08/03/18

THE CITY OF WINNIPEG
WATER AND WASTE DEPARTMENT

2008 WATERMAIN RENEWALS
CONTRACT 2
ERIN STREET
200 N OF RICHARD AVENUE TO
CPR R.O.W.

SHEET 5 OF 17
CITY DRAWING NUMBER
D-11234