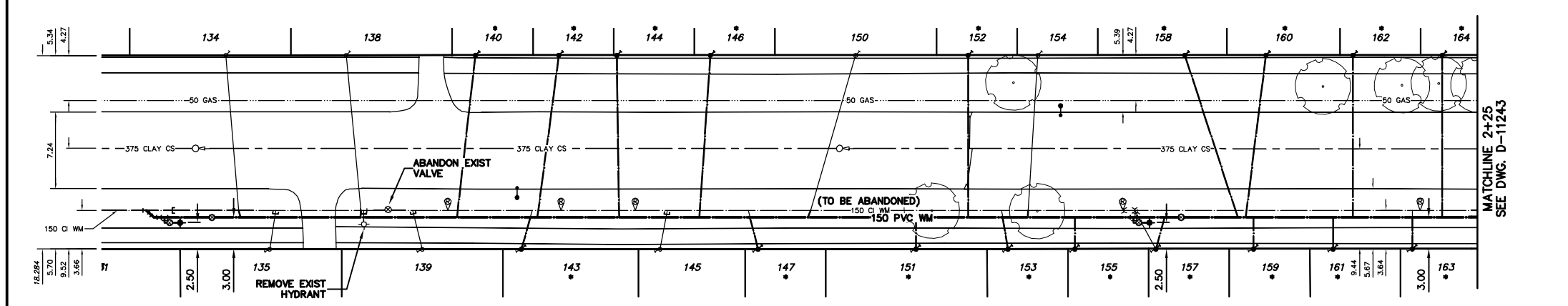


NOTE: CHAINAGES SHOWN ARE ALONG E. P. OF ROSEBERRY ST.

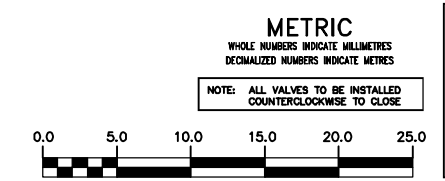
ROSEBERRY STREET



WATER SERVICE INFORMATION					
ADDRESS	SIZE(mm) & TYPE (STREET)	SIZE(mm) & TYPE (PROP)	SHORT & LONG MEASUREMENT	CORP. LOCATION	REMARKS
134 ROSEBERRY ST	RESIDENTIAL	5.23 SNL HSE	87.65>NNL ASSINBOINE	-	-
135 ROSEBERRY ST	RESIDENTIAL	20	4.94 SNL HSE	0.65 N OF S/C	-
138 ROSEBERRY ST	RESIDENTIAL	COPPER	85.65>NNL ASSINBOINE	1.4 N OF S/C	-
139 ROSEBERRY ST	RESIDENTIAL	20	1.70 NSL HSE	0.9 S OF S/C	-
140 ROSEBERRY ST	RESIDENTIAL	20	99.16>NNL ASSINBOINE	0.9 S OF S/C	-
142 ROSEBERRY ST	RESIDENTIAL	20	0.78 NSL HSE	1.8 S OF S/C	-
143 ROSEBERRY ST	RESIDENTIAL	COPPER	100.18>NNL ASSINBOINE	2.0 S OF S/C	-
144 ROSEBERRY ST	RESIDENTIAL	12	0.85 NSL HSE	1.0 N OF S/C	-
145 ROSEBERRY ST	RESIDENTIAL	20	111.20>NNL ASSINBOINE	1.0 N OF S/C	-
146 ROSEBERRY ST	RESIDENTIAL	12	109.39>NNL ASSINBOINE	0.2 N OF S/C	-
147 ROSEBERRY ST	RESIDENTIAL	12	0.10 SSL HSE	0.2 N OF S/C	-
148 ROSEBERRY ST	RESIDENTIAL	12	123.73>NNL ASSINBOINE	0.8 N OF S/C	-
149 ROSEBERRY ST	RESIDENTIAL	20	1.20 SSL HSE	1.0 S OF S/C	-
150 ROSEBERRY ST	RESIDENTIAL	COPPER	122.53>NNL ASSINBOINE	1.0 S OF S/C	-
151 ROSEBERRY ST	RESIDENTIAL	20	0.85 NSL HSE	1.0 S OF S/C	-
152 ROSEBERRY ST	RESIDENTIAL	12	133.40>NNL ASSINBOINE	1.0 S OF S/C	-
153 ROSEBERRY ST	RESIDENTIAL	12	OPP SL HSE	1.0 S OF S/C	-
154 ROSEBERRY ST	RESIDENTIAL	12	131.83>NNL ASSINBOINE	4.3 S OF S/C	-
155 ROSEBERRY ST	RESIDENTIAL	20	3.45 NSL HSE	147.06>NNL ASSINBOINE	-
156 ROSEBERRY ST	RESIDENTIAL	COPPER	8.20 SNL HSE	146.69>NNL ASSINBOINE	-
157 ROSEBERRY ST	RESIDENTIAL	12	0.50 NSL HSE	OPP S/C	-
158 ROSEBERRY ST	RESIDENTIAL	12	157.79>NNL ASSINBOINE	0.55 S OF S/C	-
159 ROSEBERRY ST	RESIDENTIAL	12	0.50 NSL HSE	155.42>NNL ASSINBOINE	-
160 ROSEBERRY ST	RESIDENTIAL	20	0.78 NSL HSE	0.95 S OF S/C	-
161 ROSEBERRY ST	RESIDENTIAL	COPPER	164.28>NNL ASSINBOINE	0.29 SSL HSE	-
162 ROSEBERRY ST	RESIDENTIAL	12	161.63>NNL ASSINBOINE	1.95 S OF S/C	-
163 ROSEBERRY ST	RESIDENTIAL	12	0.51 SSL HSE	169.35>NNL ASSINBOINE	-
164 ROSEBERRY ST	RESIDENTIAL	12	3.16 NSL HSE	178.34>NNL ASSINBOINE	-
165 ROSEBERRY ST	RESIDENTIAL	12	1.58 NSL HSE	178.63>NNL ASSINBOINE	-
166 ROSEBERRY ST	RESIDENTIAL	20	0.56 NSL HSE	185.92>NNL ASSINBOINE	-
167 ROSEBERRY ST	RESIDENTIAL	COPPER	1.08 NSL HSE	1.08 NSL HSE	-
168 ROSEBERRY ST	RESIDENTIAL	20	1.08 NSL HSE	185.91>NNL ASSINBOINE	-
169 ROSEBERRY ST	RESIDENTIAL	12	OPP SL HSE	194.21>NNL ASSINBOINE	-
170 ROSEBERRY ST	RESIDENTIAL	COPPER	193.60>NNL ASSINBOINE	OPP S/C	-
171 ROSEBERRY ST	RESIDENTIAL	12	1.70 NSL HSE	202.62>NNL ASSINBOINE	-
172 ROSEBERRY ST	RESIDENTIAL	12	2.84 NSL HSE	211.44>NNL ASSINBOINE	-
173 ROSEBERRY ST	RESIDENTIAL	20	185.92>NNL ASSINBOINE	2.15 N OF S/C	-
174 ROSEBERRY ST	RESIDENTIAL	20	172.26>NNL ASSINBOINE	2.15 N OF S/C	-
175 ROSEBERRY ST	RESIDENTIAL	20	2.84 NSL HSE	151.40>NNL ASSINBOINE	-
176 ROSEBERRY ST	RESIDENTIAL	COPPER	161.22>NNL ASSINBOINE	4.7 N OF S/C	-
177 ROSEBERRY ST	RESIDENTIAL	20	0.53 NSL HSE	151.40>NNL ASSINBOINE	-
178 ROSEBERRY ST	RESIDENTIAL	COPPER	172.26>NNL ASSINBOINE	5.5 N OF S/C	-
179 ROSEBERRY ST	RESIDENTIAL	20	2.84 NSL HSE	148.36>NNL ASSINBOINE	-
180 ROSEBERRY ST	RESIDENTIAL	20	1.43 NSL HSE	139.42>NNL ASSINBOINE	-
181 ROSEBERRY ST	RESIDENTIAL	12	1.87 NSL HSE	137.05>NNL ASSINBOINE	-
182 ROSEBERRY ST	RESIDENTIAL	12	1.20 SSL HSE	137.05>NNL ASSINBOINE	-
183 ROSEBERRY ST	RESIDENTIAL	12	2.14 SSL HSE	130.34>NNL ASSINBOINE	-
184 ROSEBERRY ST	RESIDENTIAL	20	1.43 NSL HSE	127.68>NNL ASSINBOINE	-
185 ROSEBERRY ST	RESIDENTIAL	12	0.76 NSL HSE	119.39>NNL ASSINBOINE	-
186 ROSEBERRY ST	RESIDENTIAL	20	6.23 NSL HSE	107.83>NNL ASSINBOINE	-
187 ROSEBERRY ST	RESIDENTIAL	COPPER	0.43 NSL HSE	110.28>NNL ASSINBOINE	-
188 ROSEBERRY ST	RESIDENTIAL	20	0.43 NSL HSE	101.31>NNL ASSINBOINE	-
189 ROSEBERRY ST	RESIDENTIAL	20	1.54 SNL HSE	99.50>NNL ASSINBOINE	-
190 ROSEBERRY ST	RESIDENTIAL	COPPER	98.50>NNL ASSINBOINE	0.9 N OF S/C	-
191 ROSEBERRY ST	RESIDENTIAL	20	0.82 NSL HSE	91.63>NNL ASSINBOINE	-
192 ROSEBERRY ST	RESIDENTIAL	20	OPP SL HSE	92.57>NNL ASSINBOINE	-
193 ROSEBERRY ST	RESIDENTIAL	COPPER	92.57>NNL ASSINBOINE	0.9 N OF S/C	-
194 ROSEBERRY ST	RESIDENTIAL	20	0.87 NSL HSE	82.37>NNL ASSINBOINE	-
195 ROSEBERRY ST	RESIDENTIAL	12	1.31 NSL HSE	79.35>NNL ASSINBOINE	-
196 ROSEBERRY ST	RESIDENTIAL	12	0.50 NSL HSE	73.43>NNL ASSINBOINE	-
197 ROSEBERRY ST	RESIDENTIAL	12	2.28 NSL HSE	68.95>NNL ASSINBOINE	-
198 ROSEBERRY ST	RESIDENTIAL	20	OPP SL HSE	64.76>NNL ASSINBOINE	-
199 ROSEBERRY ST	RESIDENTIAL	20	0.43 NSL HSE	61.34>NNL ASSINBOINE	-
200 ROSEBERRY ST	RESIDENTIAL	COPPER	61.34>NNL ASSINBOINE	1.0 N OF S/C	-
201 ROSEBERRY ST	RESIDENTIAL	20	53.32>NNL ASSINBOINE	OPP S/C	-
202 ROSEBERRY ST	RESIDENTIAL	20	2.13 NSL HSE	50.50>NNL ASSINBOINE	-
203 ROSEBERRY ST	RESIDENTIAL	20	2.42 NSL HSE	44.71>NNL ASSINBOINE	-
204 ROSEBERRY ST	RESIDENTIAL	20	2.72 NSL HSE	42.18>NNL ASSINBOINE	-
205 ROSEBERRY ST	RESIDENTIAL	20	13.16>NNL ASSINBOINE	NO SERVICE INFORMATION AVAILABLE	-
206 ROSEBERRY ST	RESIDENTIAL	25	7.55 EWL BLDG	SERVICED OFF BACK LANE	-
207 ROSEBERRY ST	RESIDENTIAL	COPPER	13.16>NNL ASSINBOINE	13.16>NNL ASSINBOINE	-

* SERVICES TO BE RENEWED TO R UPON CONFIRMATION BY THE CONTRACTOR OF EXISTING 1/2" COPPER OR LEAD SERVICE. OBTAIN APPROVAL FROM CONTRACT ADMINISTRATOR PRIOR TO RENEWAL.

FOR CONSTRUCTION NOTES
SEE DRAWING D-11241



WARNING
IF POWER EQUIPMENT OR EXPLOSIVES ARE TO BE USED FOR EXCAVATION ON THIS PROJECT THE CONTRACTOR MUST:
1) NOTIFY THE GAS COMPANY OF THE PROPOSED LOCATION OF EXCAVATION.
2) TAKE PRECAUTION TO AVOID DAMAGE TO GAS COMPANY INSTALLATIONS.
SEE PROVINCIAL REGULATION 210/72 FOR DETAILS

200 WM	WATERMAIN	200 WM	SL, HYDRO	150 WM	WATERMAIN	150 WM
⊕	HYDRANT	⊕	MTS	⊕	HYDRANT	⊕
⊙	VALVE	⊙	TRAFFIC SIGNALS	⊙	VALVE	⊙
525 LDS	LAND DRAINAGE SEWER	525 LDS	GAS	50 GAS	300 LDS	LAND DRAINAGE SEWER
375 WWS	WASTEWATER SEWER	375 WWS	SURVEY BAR	250 WWS	250 WWS	WASTEWATER SEWER
○	MANHOLE	●	FENCE	⊕	○	PROFILE
▽	CATCH BASIN	■	POLE - HYDRO, MTS	⊕	⊕	GROUND ABOVE PIPE
▽	CURB INLET	▽	CURB STOP	⊕	⊕	⊕
▽	REDUCER	▽	GUY ANCHOR	⊕	⊕	⊕
X	COUPLER	X	LIGHT STANDARD	⊕	⊕	⊕
⊕	ANODE	⊕	TREE	⊕	⊕	⊕
EXISTING	LEGEND-PLAN	PROPOSED	EXISTING	LEGEND-PLAN	PROPOSED	EXISTING

LOCATION APPROVED UNDERGROUND STRUCTURES	
SUPV. U/G STRUCTURES COMMITTEE	DATE
NOTE: LOCATION OF UNDERGROUND STRUCTURES AS SHOWN ARE BASED ON THE BEST INFORMATION AVAILABLE BUT NO GUARANTEE IS GIVEN THAT ALL EXISTING UTILITIES ARE SHOWN OR THAT THE GIVEN LOCATIONS ARE EXACT. CONFIRMATION OF EXISTENCE AND EXACT LOCATION OF ALL SERVICES MUST BE OBTAINED FROM THE INDIVIDUAL UTILITIES BEFORE PROCEEDING WITH CONSTRUCTION.	

CITY OF WINNIPEG WATER AND WASTE ENGINEERING DIVISION

DESIGNED BY: SGL
CHECKED BY: SC
DRAWN BY: CJH
APPROVED BY: KZ

HOR. SCALE: 1:250
VERTICAL: 1:50

RELEASED FOR CONSTRUCTION
SIGNED BY K. ZUREK

NO. REVISIONS: _____ DATE: _____ BY: _____

ENGINEER'S SEAL
ORIGINAL SIGNED BY
S.R.J. COUNOYER
08/03/18

THE CITY OF WINNIPEG WATER AND WASTE DEPARTMENT

2008 WATERMAIN RENEWALS
CONTRACT 2
ROSEBERRY STREET
300 S OF PORTAGE AVENUE TO
175 S OF PORTAGE AVENUE

SHEET 13 OF 17
CITY DRAWING NUMBER
D-11242