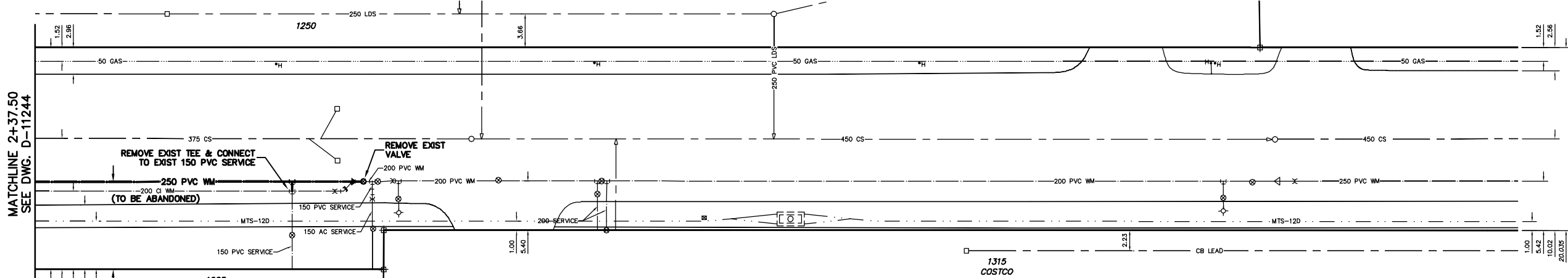


NOTE: CHAINAGES SHOWN ARE ALONG E. R. OF ST JAMES ST.

ST. JAMES STREET



WATER SERVICE INFORMATION

ADDRESS	SIZE(mm) & TYPE (STREET)	SIZE(mm) & TYPE (PROP)	SHORT & LONG MEASUREMENT	CORP. LOCATION	REMARKS
1250 ST JAMES ST COMMERCIAL	150 PVC	150 PVC	54.34 NSL BLDG 128.67>NNL WELLINGTON	OPP VALVE	--
1285 ST JAMES ST COMMERCIAL	150 PVC	150 PVC	4.95 SNL BLDG 145.49>NNL WELLINGTON	OPP VALVE	--
1285 ST JAMES ST COMMERCIAL	150 PVC	150 PVC	145.49>NNL WELLINGTON	OPP VALVE	--
1315 ST JAMES ST COMMERCIAL	200 AC	200 AC	154.25>NNL WELLINGTON	OPP VALVE	--
1315 ST JAMES ST COMMERCIAL	200 PVC	200 PVC	5.32 NSL BLDG 178.94>NNL WELLINGTON	OPP VALVE	--
1315 ST JAMES ST COMMERCIAL	200 PVC	200 PVC	5.75 NSL BLDG 180.01>NNL WELLINGTON	OPP VALVE	--

\* SERVICES TO BE RENEWED TO R. UPON CONFIRMATION BY THE CONTRACTOR OF EXISTING 1/2" COPPER OR LEAD SERVICE. OBTAIN APPROVAL FROM CONTRACT ADMINISTRATOR PRIOR TO RENEWAL.

METRIC

WHOLE NUMBERS INDICATE MILLIMETRES  
DECIMAL NUMBERS INDICATE METRES

NOTE: ALL VALVES TO BE INSTALLED COUNTERCLOCKWISE TO CLOSE

FOR CONSTRUCTION NOTES  
SEE DRAWING D-11241

WARNING

IF POWER EQUIPMENT OR EXPLOSIVES ARE TO BE USED FOR EXCAVATION ON THIS PROJECT THE CONTRACTOR MUST:  
1) NOTIFY THE GAS COMPANY OF THE PROPOSED LOCATION OF EXCAVATION.  
2) TAKE PRECAUTION TO AVOID DAMAGE TO GAS COMPANY INSTALLATIONS.  
SEE PROVINCIAL REGULATION 210/72 FOR DETAILS

200 WM	WATERMAIN	200 WM	SL, HYDRO	150 WM	WATERMAIN	150 WM
⊕	HYDRANT	⊕	MTS	⊕	HYDRANT	⊕
⊙	VALVE	⊙	TRAFFIC SIGNALS	⊙	VALVE	⊙
525 LDS	LAND DRAINAGE SEWER	525 LDS	GAS	50 GAS	300 LDS	LAND DRAINAGE SEWER
375 WWS	WASTEWATER SEWER	375 WWS	SURVEY BAR	250 WWS	250 WWS	WASTEWATER SEWER
○	MANHOLE	●	FENCE	⊕	⊕	PROFILE
▽	CATCH BASIN	■	POLE - HYDRO, MTS	⊕	⊕	GROUND ABOVE PIPE
∇	CURB INLET	∇	CURB STOP	⊕	⊕	☉ DITCH (NORTH & WEST)
∇	REDUCER	∇	GUY ANCHOR	∇	∇	☉ DITCH (SOUTH & EAST)
X	COUPLER	X	LIGHT STANDARD	∇	∇	☉ GUTTER (NORTH & WEST)
⊕	ANODE	⊕	TREE	∇	∇	☉ GUTTER (SOUTH & EAST)
EXISTING	LEGEND-PLAN	PROPOSED	EXISTING	LEGEND-PLAN	PROPOSED	EXISTING
EXISTING	LEGEND-PROFILE	PROPOSED	EXISTING	LEGEND-PROFILE	PROPOSED	EXISTING

LOCATION APPROVED  
UNDERGROUND STRUCTURES

SUPV. U/G STRUCTURES COMMITTEE DATE  
NOTE:  
LOCATION OF UNDERGROUND STRUCTURES AS SHOWN ARE BASED ON THE BEST INFORMATION AVAILABLE BUT NO GUARANTEE IS GIVEN THAT ALL EXISTING UTILITIES ARE SHOWN OR THAT THE GIVEN LOCATIONS ARE EXACT. CONFIRMATION OF EXISTENCE AND EXACT LOCATION OF ALL SERVICES MUST BE OBTAINED FROM THE INDIVIDUAL UTILITIES BEFORE PROCEEDING WITH CONSTRUCTION.

B.M. ELEV.	FIELD BOOK #:
POSTED TO LBS	
NO. REVISIONS	DATE BY

CITY OF WINNIPEG  
WATER AND WASTE  
ENGINEERING DIVISION

DESIGNED BY: SGL  
CHECKED BY: SC  
DRAWN BY: C.J.H.  
APPROVED BY: K.Z.  
HOR. SCALE: 1:250  
VERTICAL SCALE: 1:50  
RELEASED FOR CONSTRUCTION  
SIGNED BY K. ZUREK  
DATE: 2008 03 18

ENGINEER'S SEAL  
ORIGINAL SIGNED BY  
S.R.J. COURNOYER  
08/03/18

THE CITY OF WINNIPEG  
WATER AND WASTE DEPARTMENT

2008 WATERMAIN RENEWALS  
CONTRACT 2  
ST. JAMES STREET  
120 N OF WELLINGTON AVENUE TO  
282.5 N OF WELLINGTON AVENUE

SHEET 16 OF 17  
CITY DRAWING NUMBER  
D-11245