

- CONSTRUCTION NOTES:**
1. EXCAVATIONS SHALL BE AS FAR AS POSSIBLE FROM EXISTING TREES.
  2. INSTALL SEWER BY TRENCHLESS METHODS.
  3. CONFIRM THE LOCATION OF ALL SEWER SERVICES.
  4. BACKFILL UNDER PAVEMENT, IN SIDEWALKS, & WITHIN 1.0 OF PAVEMENT TO BE CLASS 3.
  5. BACKFILL IN BOULEVARD TO BE CLASS 5.
  6. RENEW SEWER SERVICES TO R.
  7. INSTALL SEWER SERVICE RISERS TO ELEVATION WHERE MINIMUM SLOPE OF 1% IS MAINTAINED FOR ALL SERVICES.

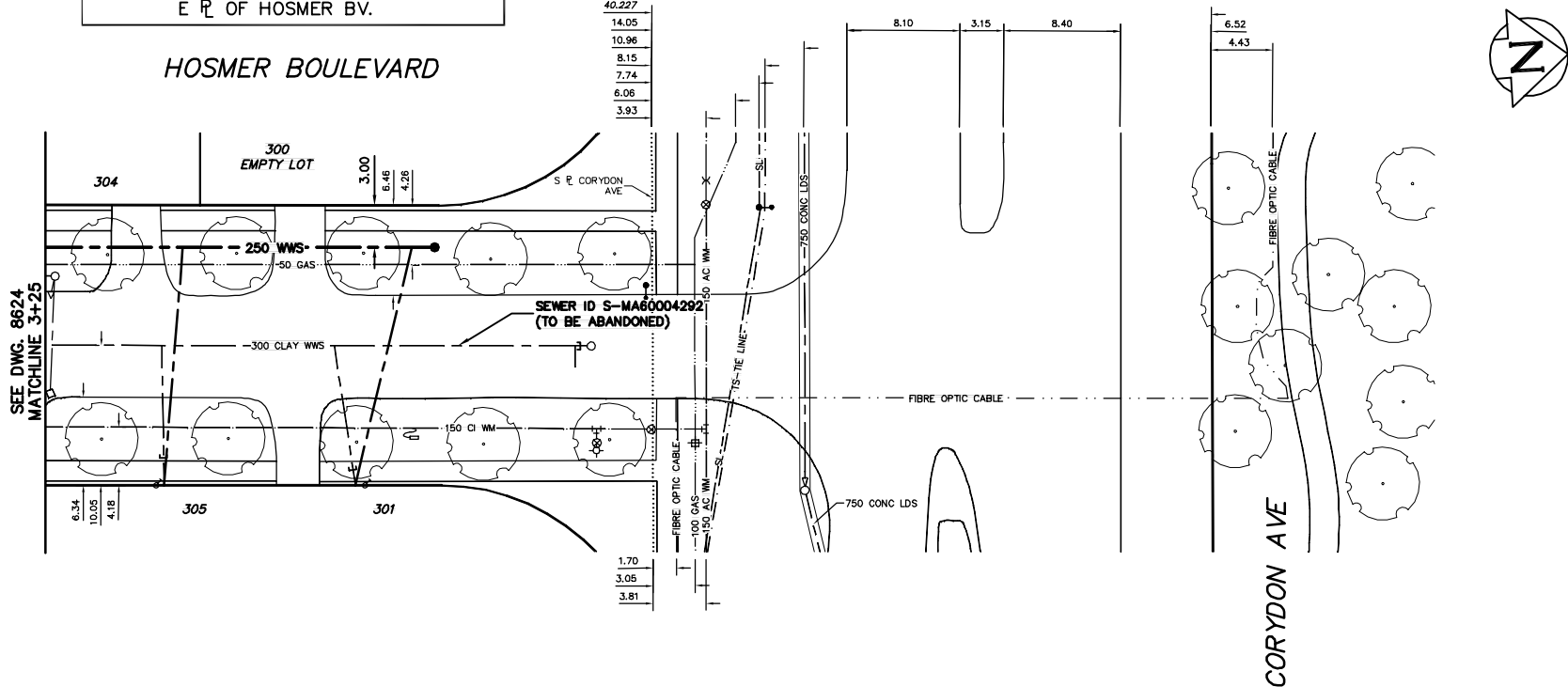
**WATER SERVICE INFORMATION**

ADDRESS	SIZE(mm) & TYPE (STREET)	SIZE(mm) & TYPE (PROP)	SHORT & LONG MEASUREMENT	CORP. LOCATION
300 HOSMER BV	-	-	-	-
RESIDENTIAL	-	-	-	NO INFORMATION AVAILABLE
301 HOSMER BV	-	-	20.72 SSL CORYDON	-
RESIDENTIAL	-	-	-	-
304 HOSMER BV	-	-	47.37 SSL CORYDON	-
RESIDENTIAL	-	-	-	-
305 HOSMER BV	-	-	35.78 SSL CORYDON	-
RESIDENTIAL	-	-	-	-

NOTE:  
FOR CURBSTOPS AND SERVICES IN GIS :  
SHORT MEASUREMENTS WERE MEASURED IN AUTOCAD USING 2005 AERIAL PHOTOS  
LONG MEASUREMENTS WERE MEASURED IN AUTOCAD

FOR CURBSTOPS AND SERVICES NOT IN GIS :  
INFORMATION IS FROM PANEL 10 (P10)

NOTE: CHAINAGES SHOWN ARE ALONG E R OF HOSMER BV.



**SEWER SERVICE INFORMATION**

ADDRESS	SIZE	R DIST	JUNCTION TIE
300 HOSMER BV	-	-	-
RESIDENTIAL	-	-	NO INFORMATION AVAILABLE
301 HOSMER BV	-	-	-
RESIDENTIAL	-	-	NO INFORMATION AVAILABLE
304 HOSMER BV	-	-	-
RESIDENTIAL	-	-	NO INFORMATION AVAILABLE
305 HOSMER BV	-	-	-
RESIDENTIAL	-	-	NO INFORMATION AVAILABLE

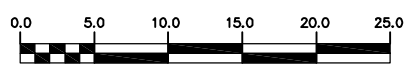
**SEWER JUNCTION INFORMATION FROM SEWER VIDEO INSPECTION S-MA60004292**

DISTANCE FROM MH S-MH60003097				
1.2	S	150#	EAST	CHI
18.5	S	150#	EAST	CHI
30.9	S	150#	EAST	JN

**METRIC**  
WHOLE NUMBERS INDICATE MILLIMETRES  
DECIMALIZED NUMBERS INDICATE METRES

**WARNING**

IF POWER EQUIPMENT OR EXPLOSIVES ARE TO BE USED FOR EXCAVATION ON THIS PROJECT THE CONTRACTOR MUST:  
1) NOTIFY THE GAS COMPANY OF THE PROPOSED LOCATION OF EXCAVATION.  
2) TAKE PRECAUTION TO AVOID DAMAGE TO GAS COMPANY INSTALLATIONS.  
SEE PROVINCIAL REGULATION 210/72 FOR DETAILS



200 WM	WATERMAIN	200 WM	SL, HYDRO	150 WM	WATERMAIN	150 WM
⊕	HYDRANT	⊕	MTS	⊕	HYDRANT	⊕
⊙	VALVE	⊙	TRAFFIC SIGNALS	⊙	VALVE	⊙
525 LDS	LAND DRAINAGE SEWER	525 LDS	GAS	300 LDS	LAND DRAINAGE SEWER	300 LDS
375 WWS	WASTEWATER SEWER	375 WWS	SURVEY BAR	250 WWS	WASTEWATER SEWER	250 WWS
○	MANHOLE	⊕	FENCE	⊕	PROFILE	⊕
□	CATCH BASIN	⊕	POLE - HYDRO, MTS	⊕	GROUND ABOVE PIPE	⊕
▽	CURB INLET	▽	CURB STOP	▽	DITCH (NORTH & WEST)	▽
⊕	JUNCTIONS	⊕	GUY ANCHOR	⊕	DITCH (SOUTH & EAST)	⊕
⊕	CULVERT	⊕	LIGHT STANDARD	⊕	GUTTER (NORTH & WEST)	⊕
⊕	ANODE	⊕	TREE	⊕	GUTTER (SOUTH & EAST)	⊕
EXISTING	LEGEND-PLAN	PROPOSED	EXISTING	LEGEND-PLAN	PROPOSED	EXISTING

**CITY OF WINNIPEG WATER AND WASTE ENGINEERING DIVISION**

DESIGNED BY: SGL  
CHECKED BY: NC  
DRAWN BY: CJH  
APPROVED BY: KZ

HOR. SCALE: 1:250  
VERTICAL: 1:50

RELEASED FOR CONSTRUCTION: 2008 07 17

ENGINEER'S SEAL: ORIGINAL SIGNED BY K.R. ZUREK 08/07/17

**THE CITY OF WINNIPEG WATER AND WASTE DEPARTMENT**

2008 SEWER RENEWALS CONTRACT 15  
HOSMER BOULEVARD  
2ND MH N OF CUTHBERTSON AVENUE TO 3RD MH N OF CUTHBERTSON AVENUE

SHEET 3 OF 8  
CITY DRAWING NUMBER: 8625

BID OPPORTUNITY: 578-2008  
FILENAME: 8625.dwg  
PLOT DATE: 2008 07 17