

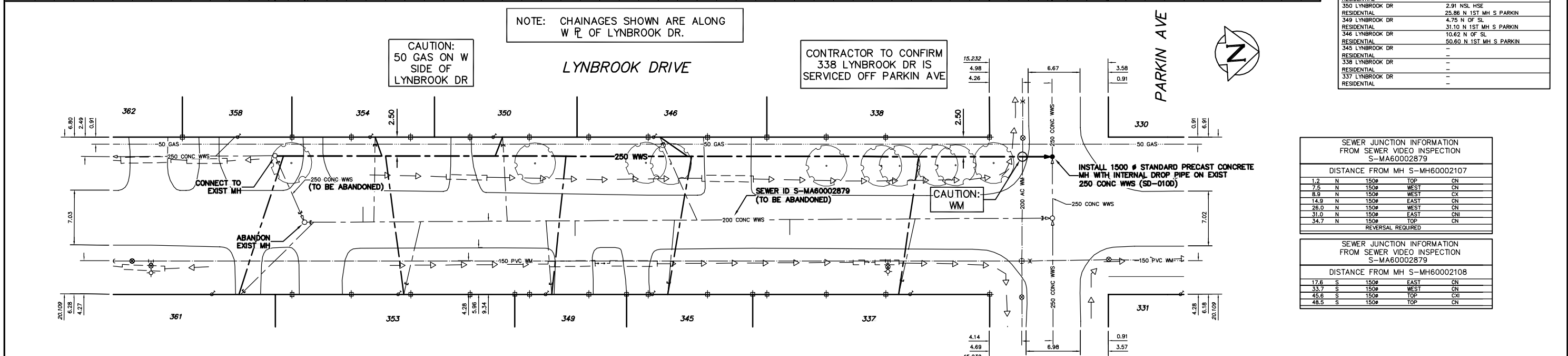
- CONSTRUCTION NOTES:**
1. EXCAVATIONS SHALL BE AS FAR AS POSSIBLE FROM EXISTING TREES.
 2. INSTALL SEWER BY TRENCHLESS METHODS.
 3. CONFIRM THE LOCATION OF ALL SEWER SERVICES.
 4. BACKFILL UNDER PAVEMENT, IN SIDEWALKS, & WITHIN 1.0 OF PAVEMENT TO BE CLASS 3.
 5. BACKFILL IN BOULEVARD TO BE CLASS 5.
 6. RENEW SEWER SERVICES TO R.
 7. INSTALL SEWER SERVICE RISERS TO ELEVATION WHERE MINIMUM SLOPE OF 1% IS MAINTAINED FOR ALL SERVICES.

SEWER SERVICE INFORMATION		
ADDRESS	SIZE	R DIST JUNCTION TIE
361 LYNBROOK DR RESIDENTIAL	-	-
358 LYNBROOK DR RESIDENTIAL	6.74 N OF SL	-
354 LYNBROOK DR RESIDENTIAL	105.43 N 2ND MH S PARKIN	-
353 LYNBROOK DR RESIDENTIAL	-	-
350 LYNBROOK DR RESIDENTIAL	2.91 NSL HSE	-
349 LYNBROOK DR RESIDENTIAL	23.86 N 1ST MH S PARKIN	-
346 LYNBROOK DR RESIDENTIAL	4.75 N OF SL	-
345 LYNBROOK DR RESIDENTIAL	31.10 N 1ST MH S PARKIN	-
343 LYNBROOK DR RESIDENTIAL	10.62 N OF SL	-
345 LYNBROOK DR RESIDENTIAL	50.60 N 1ST MH S PARKIN	-
338 LYNBROOK DR RESIDENTIAL	-	-
337 LYNBROOK DR RESIDENTIAL	-	-

NOTE: CHAINAGES SHOWN ARE ALONG W R OF LYNBROOK DR.

CAUTION: 50 GAS ON W SIDE OF LYNBROOK DR

CONTRACTOR TO CONFIRM 338 LYNBROOK DR IS SERVICED OFF PARKIN AVE



SEWER JUNCTION INFORMATION FROM SEWER VIDEO INSPECTION S-MA60002879			
DISTANCE FROM MH S-MH60002107			
1.2	N	150	TOP CN
7.5	N	150	WEST CN
8.9	N	150	WEST CX
14.9	N	150	EAST CN
28.0	N	150	WEST CN
31.0	N	150	EAST CNI
34.7	N	150	TOP CN
REVERSAL REQUIRED			

SEWER JUNCTION INFORMATION FROM SEWER VIDEO INSPECTION S-MA60002879			
DISTANCE FROM MH S-MH60002108			
17.8	S	150	EAST CN
33.7	S	150	WEST CN
45.6	S	150	TOP CXI
48.5	S	150	TOP CN

WATER SERVICE INFORMATION					
ADDRESS	SIZE(mm) & TYPE (STREET)	SIZE(mm) & TYPE (PROP)	SHORT & LONG MEASUREMENT	CORP. LOCATION	REMARKS
361 LYNBROOK DR RESIDENTIAL	-	-	3.07 NSL HOUSE	-	-
358 LYNBROOK DR RESIDENTIAL	-	-	99.81 SS PL PARKIN	-	-
358 LYNBROOK DR RESIDENTIAL	19 COPPER	19 COPPER	6.76 NSL HOUSE	3.10 S OF S/C	-
354 LYNBROOK DR RESIDENTIAL	19 COPPER	19 COPPER	96.49 SS PL PARKIN	-	-
354 LYNBROOK DR RESIDENTIAL	19 COPPER	19 COPPER	3.57 NSL HOUSE	0.30 N OF S/C	-
353 LYNBROOK DR RESIDENTIAL	19 COPPER	19 COPPER	79.49 SS PL PARKIN	-	-
353 LYNBROOK DR RESIDENTIAL	19 COPPER	19 COPPER	10.58 NSL HOUSE	OPP S/C	FEB/05-RENEWED SERVICE BOX
350 LYNBROOK DR RESIDENTIAL	19 COPPER	19 COPPER	75.91 SS PL PARKIN	-	-
350 LYNBROOK DR RESIDENTIAL	19 COPPER	19 COPPER	1.67 NSL HOUSE	0.60 N OF S/C	-
350 LYNBROOK DR RESIDENTIAL	19 COPPER	19 COPPER	63.69 SS PL PARKIN	-	-

WATER SERVICE INFORMATION					
ADDRESS	SIZE(mm) & TYPE (STREET)	SIZE(mm) & TYPE (PROP)	SHORT & LONG MEASUREMENT	CORP. LOCATION	REMARKS
349 LYNBROOK DR RESIDENTIAL	19 COPPER	19 COPPER	1.95 NSL HOUSE	-	NOV 16/04: COULD NOT LOCATE S/C. PROBABLY BURIED UNDER PILE OF GRAVEL
346 LYNBROOK DR RESIDENTIAL	19 COPPER	19 COPPER	56.98 SS PL PARKIN	-	-
346 LYNBROOK DR RESIDENTIAL	19 COPPER	19 COPPER	4.21 NSL HOUSE	2.80 N OF S/C	SEWER & WATER IN SAME TRENCH 6"WWS PVC. MARY/90 HOSE INSTALLED TO SUPPLY 338 WITH WATER-NO CHARGE.
345 LYNBROOK DR RESIDENTIAL	19 COPPER	19 COPPER	43.09 SS PL PARKIN	-	-
345 LYNBROOK DR RESIDENTIAL	19 COPPER	19 COPPER	0.61 NSL HOUSE	2.40 N OF S/C	-
338 LYNBROOK DR RESIDENTIAL	19 COPPER	19 COPPER	43.31 SS PL PARKIN	-	-
338 LYNBROOK DR RESIDENTIAL	19 COPPER	19 COPPER	1.83 E S/C	-	*ELMHURST SS PARKIN SERVICE OFF BACKLANE
337 LYNBROOK DR RESIDENTIAL	19 COPPER	19 COPPER	2.13 NSL FOUNDATION	OPP S/C	-
337 LYNBROOK DR RESIDENTIAL	19 COPPER	19 COPPER	13.11 SSL WELLINGTON	-	-

NOTE: FOR CURBSTOPS AND SERVICES IN GIS: SHORT MEASUREMENTS WERE MEASURED IN AUTOCAD USING 2005 AERIAL PHOTOS LONG MEASUREMENTS WERE MEASURED IN AUTOCAD

FOR CURBSTOPS AND SERVICES NOT IN GIS: INFORMATION IS FROM PANEL 10 (P10)

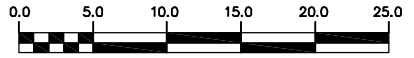
METRIC
WHOLE NUMBERS INDICATE MILLIMETRES
DECIMALIZED NUMBERS INDICATE METRES

WARNING

IF POWER EQUIPMENT OR EXPLOSIVES ARE TO BE USED FOR EXCAVATION ON THIS PROJECT THE CONTRACTOR MUST:

- 1) NOTIFY THE GAS COMPANY OF THE PROPOSED LOCATION OF EXCAVATION.
- 2) TAKE PRECAUTION TO AVOID DAMAGE TO GAS COMPANY INSTALLATIONS.

SEE PROVINCIAL REGULATION 210/72 FOR DETAILS



200 WM	WATERMAIN	200 WM	SL, HYDRO	150 WM	WATERMAIN	150 WM
⊕	HYDRANT	⊕	MTS	⊕	HYDRANT	⊕
⊙	VALVE	⊙	TRAFFIC SIGNALS	⊙	VALVE	⊙
525 LDS	LAND DRAINAGE SEWER	525 LDS	50 GAS	50 GAS	300 LDS	LAND DRAINAGE SEWER
375 WWS	WASTEWATER SEWER	375 WWS	SURVEY BAR	250 WWS	WASTEWATER SEWER	250 WWS
○	MANHOLE	○	FENCE	⊗	PROFILE	⊗
□	CATCH BASIN	□	POLE - HYDRO, MTS	⊗	GROUND ABOVE PIPE	⊗
▽	CURB INLET	▽	CURB STOP	⊗	DITCH (NORTH & WEST)	⊗
⊕	JUNCTIONS	⊕	GUY ANCHOR	⊕	DITCH (SOUTH & EAST)	⊕
⊕	CULVERT	⊕	LIGHT STANDARD	⊕	GUTTER (NORTH & WEST)	⊕
⊕	ANODE	⊕	TREE	⊕	GUTTER (SOUTH & EAST)	⊕
EXISTING	LEGEND-PLAN	PROPOSED	EXISTING	LEGEND-PLAN	PROPOSED	EXISTING
EXISTING	LEGEND-PROFILE	PROPOSED	EXISTING	LEGEND-PROFILE	PROPOSED	EXISTING

LOCATION APPROVED UNDERGROUND STRUCTURES		B.M. ELEV.	FIELD BOOK #:
SUPV. U/G STRUCTURES COMMITTEE	DATE		
NOTE:	LOCATION OF UNDERGROUND STRUCTURES AS SHOWN ARE BASED ON THE BEST INFORMATION AVAILABLE BUT NO GUARANTEE IS GIVEN THAT ALL EXISTING UTILITIES ARE SHOWN OR THAT THE GIVEN LOCATIONS ARE EXACT. CONFIRMATION OF EXISTENCE AND EXACT LOCATION OF ALL SERVICES MUST BE OBTAINED FROM THE INDIVIDUAL UTILITIES BEFORE PROCEEDING WITH CONSTRUCTION.		
NO.	REVISIONS	DATE	BY

CITY OF WINNIPEG
WATER AND WASTE
ENGINEERING DIVISION

DESIGNED BY: SGL
CHECKED BY: NC

DRAWN BY: CJH
APPROVED BY: KZ

HOR. SCALE: 1:250
VERTICAL: 1:50

RELEASED FOR CONSTRUCTION: 2008 07 17

ENGINEER'S SEAL

ORIGINAL SIGNED BY K.R. ZUREK
08/07/17

BID OPPORTUNITY: 578-2008
FILENAME: 8626.dwg
PLOT DATE: 2008 07 17

THE CITY OF WINNIPEG
WATER AND WASTE DEPARTMENT

2008 SEWER RENEWALS
CONTRACT 15
LYNBROOK DRIVE
1ST MH S OF PARKIN AVENUE TO MH AT PARKIN AVENUE

SHEET 4 OF 8
CITY DRAWING NUMBER
8626