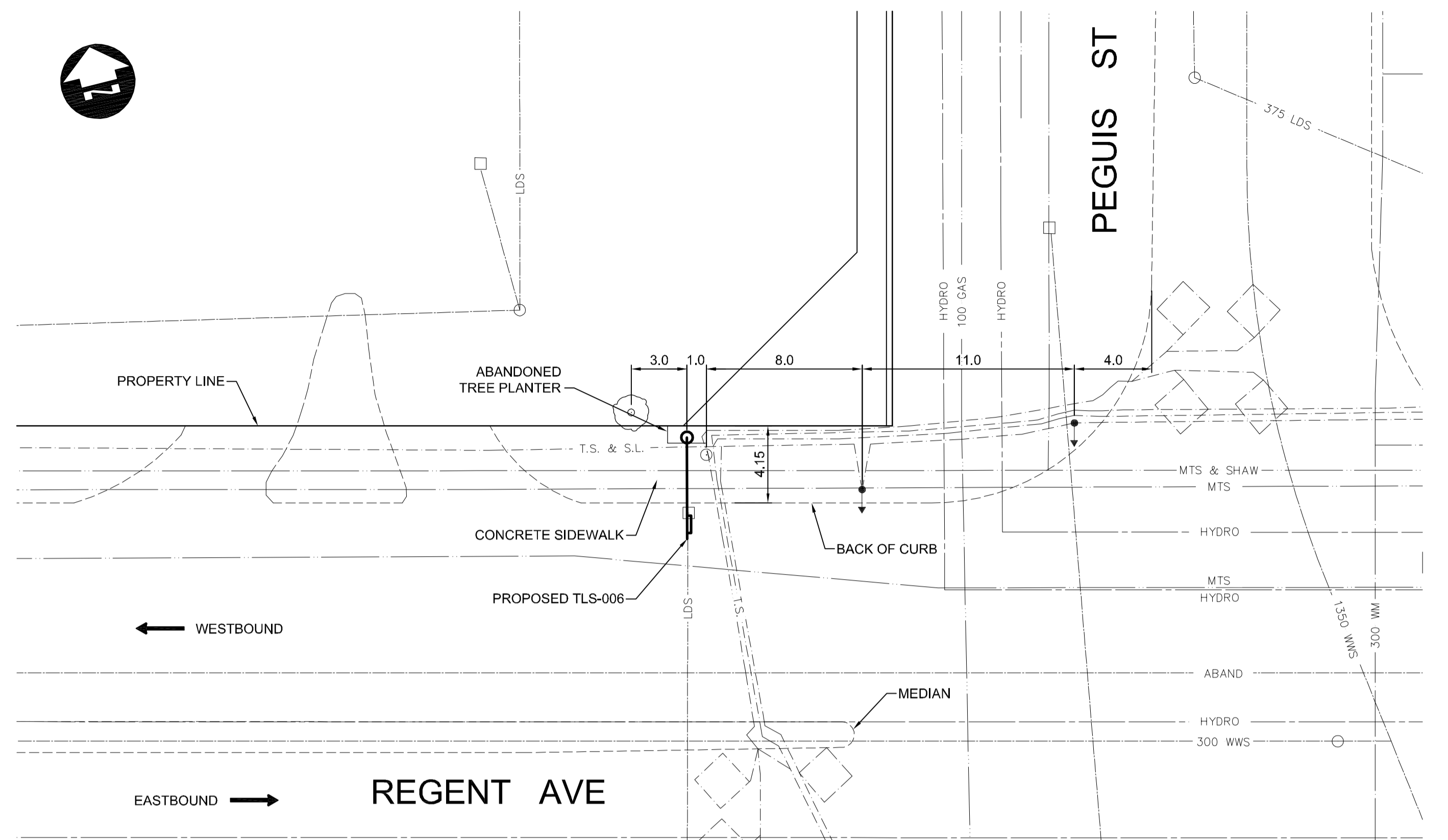
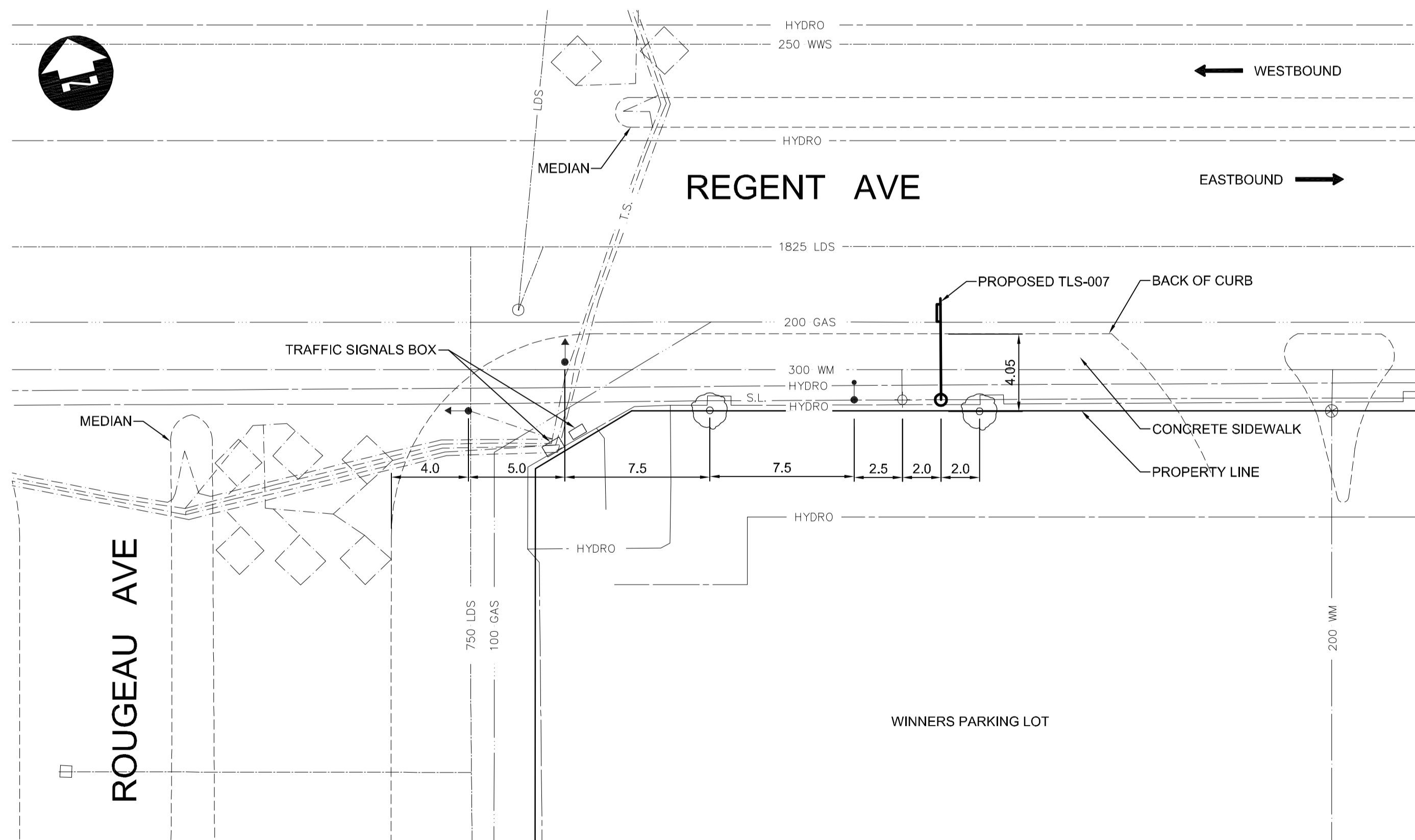


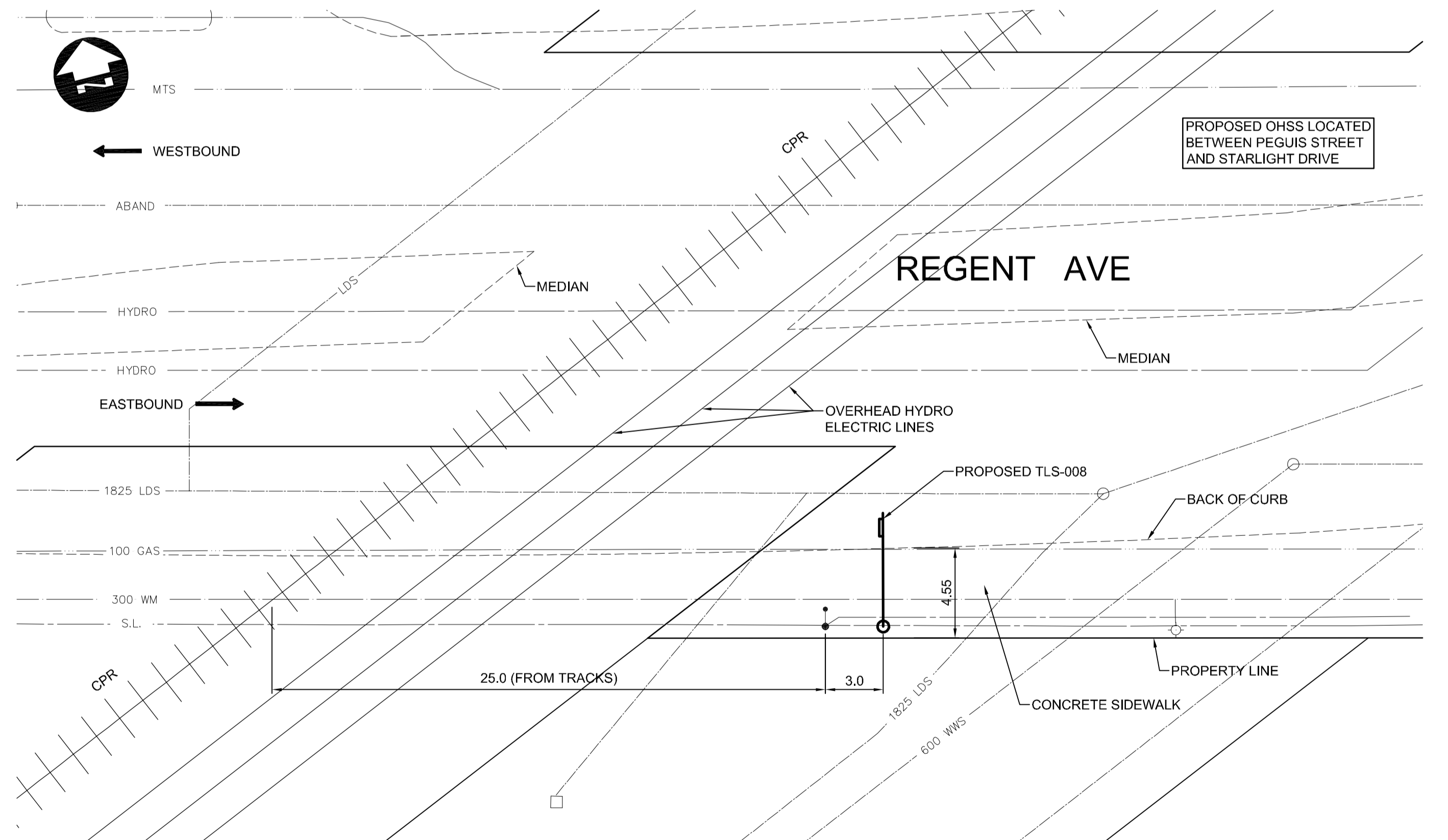
TLS-005



TLS-006



TLS-007



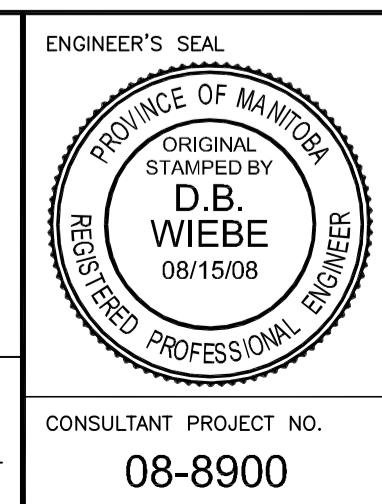
TLS-008

150 mm W.M.	WATER MAIN	150 mm W.M.	HYDRO	150 mm W.M.
HYDRANT	HYDRANT	VALVE	M.T.S.	CONCRETE
300 mm L.D.S.	LAND DRAINAGE SEWER	300 mm L.D.S.	ASPHALT	300 mm L.D.S.
250 mm W.W.S.	WASTE WATER SEWER	250 mm W.W.S.	PLANING	250 mm W.W.S.
MANHOLE	MANHOLE	CATCH BASIN	SIDEWALK	
CURB INLET	CURB INLET	JUNCTIONS	PAVING STONES	PARTIAL DEPTH REPAIR
CULVERT	CULVERT	GAS	PROPERTY LINE	SURVEY BAR
EXISTING	LEGEND-PLAN	PROPOSED	EXISTING	LEGEND-PLAN
				PROPOSED
				EXISTING

UNDERGROUND STRUCTURES  
 SUPPLY, U/G STRUCTURES COMMITTEE DATE  
 NOTE:  
 LOCATION OF UNDERGROUND STRUCTURES AS SHOWN ARE BASED ON THE BEST INFORMATION AVAILABLE, BUT NO GUARANTEE IS GIVEN THAT ALL EXISTING UTILITIES ARE SHOWN OR THAT THE GIVEN LOCATIONS ARE EXACT. CONFIRMATION OF EXISTENCE AND EXACT LOCATION OF ALL SERVICES MUST BE OBTAINED FROM THE INDIVIDUAL UTILITIES BEFORE PROCEEDING WITH CONSTRUCTION.

B.M. ELEV.				
2	ISSUED FOR TENDER	08/15/08	TJH	
1	ISSUED FOR REVIEW	07/29/08	TJH	
NO.	REVISIONS	DATE	BY	DATE

DESIGNED BY RJT  
 DRAWN BY TJH  
 CHECKED BY DBW  
 APPROVED BY  
 HOR. SCALE 1 : 200  
 VERTICAL  
 DATE



**THE CITY OF WINNIPEG**  
 TRANSIT DEPARTMENT

ON STREET TRANSIT  
 PRIORITY IMPROVEMENTS - PHASE 2  
 REGENT AVENUE (2 OF 3)

CITY DRAWING NUMBER  
 SHEET 4 OF 11

CONSULTANT PROJECT NO.  
 08-8900