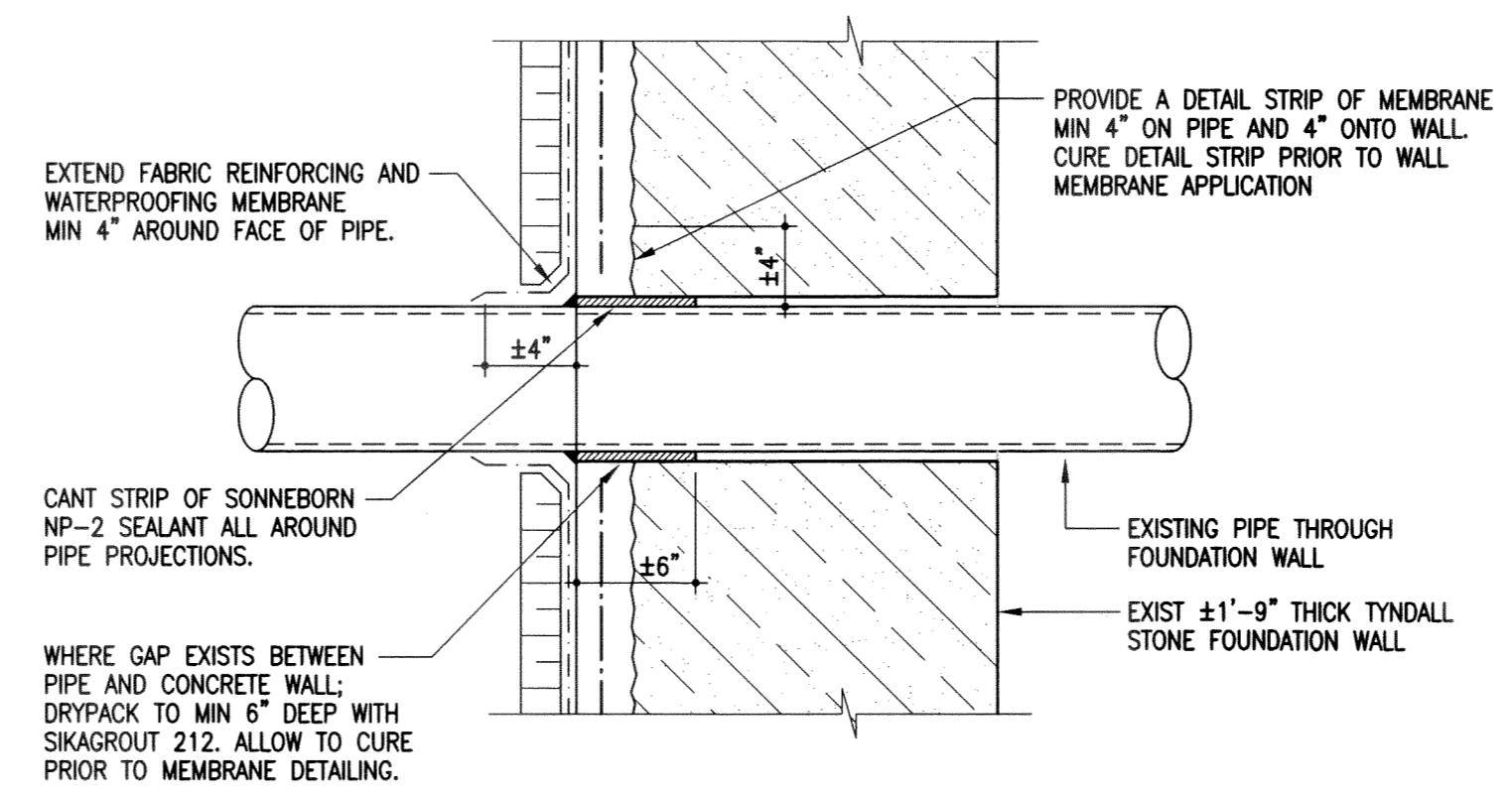
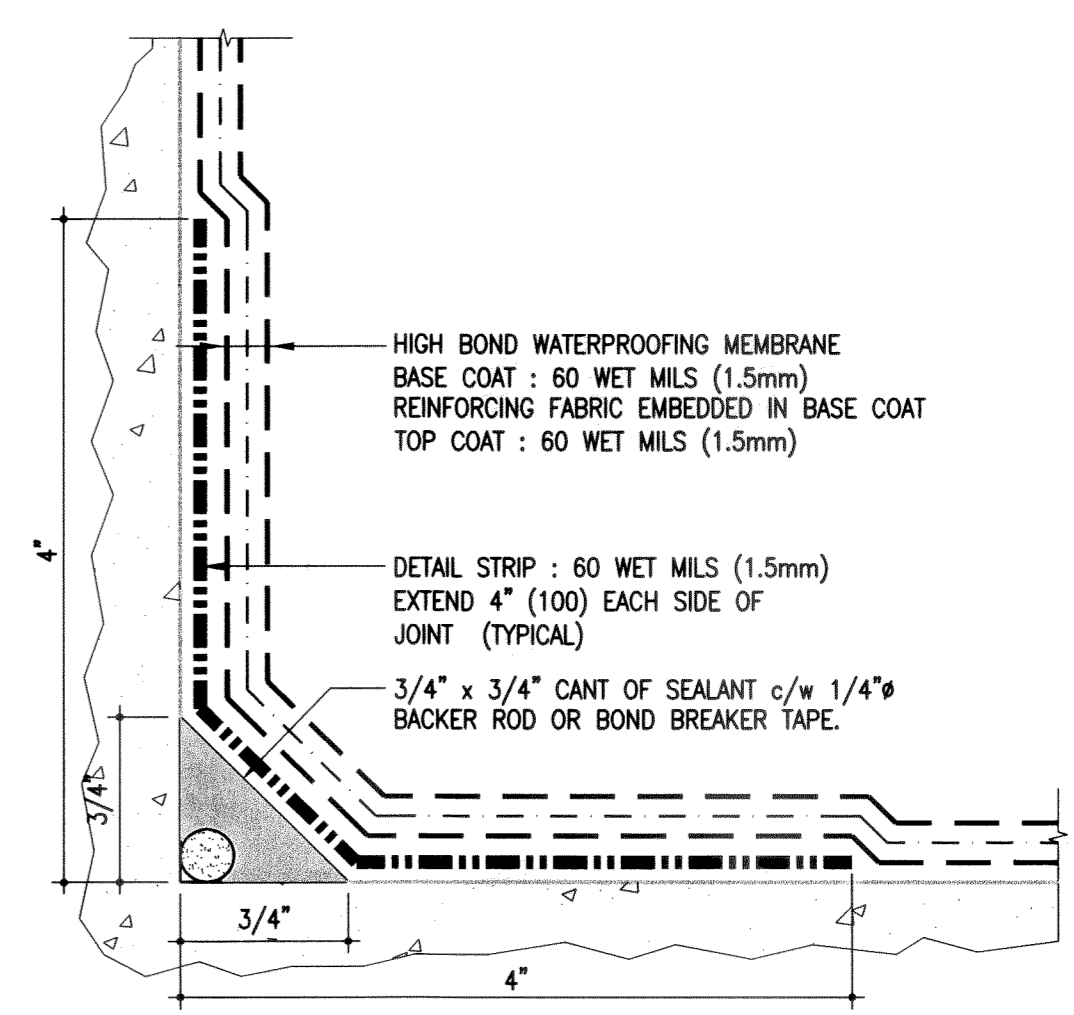


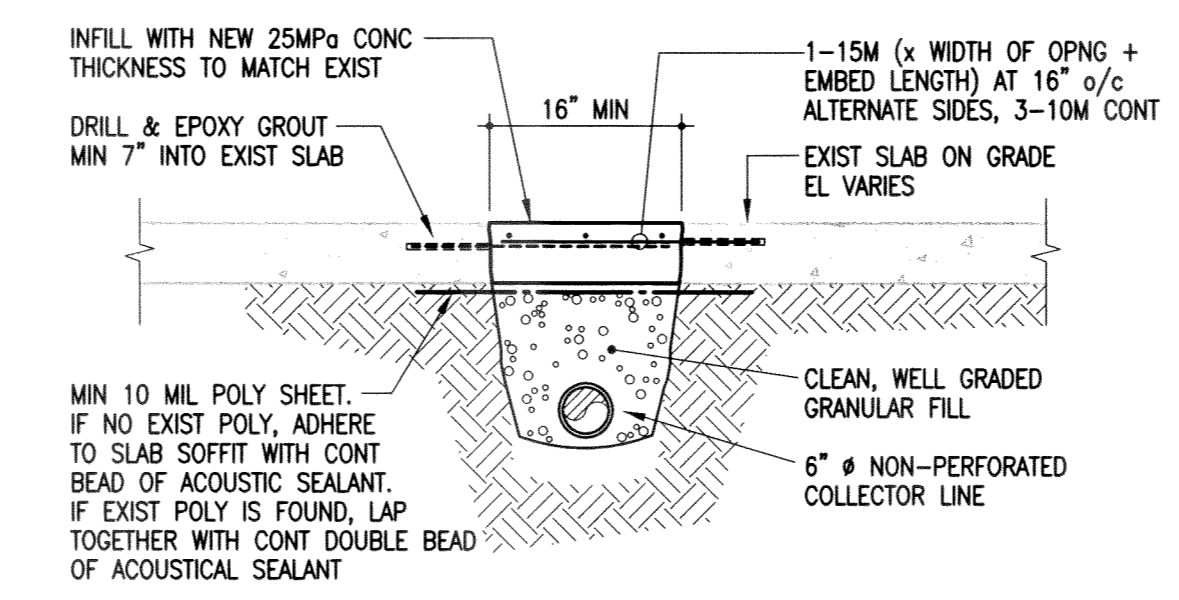
1 SECTION
S-2 1/2" = 1'-0"



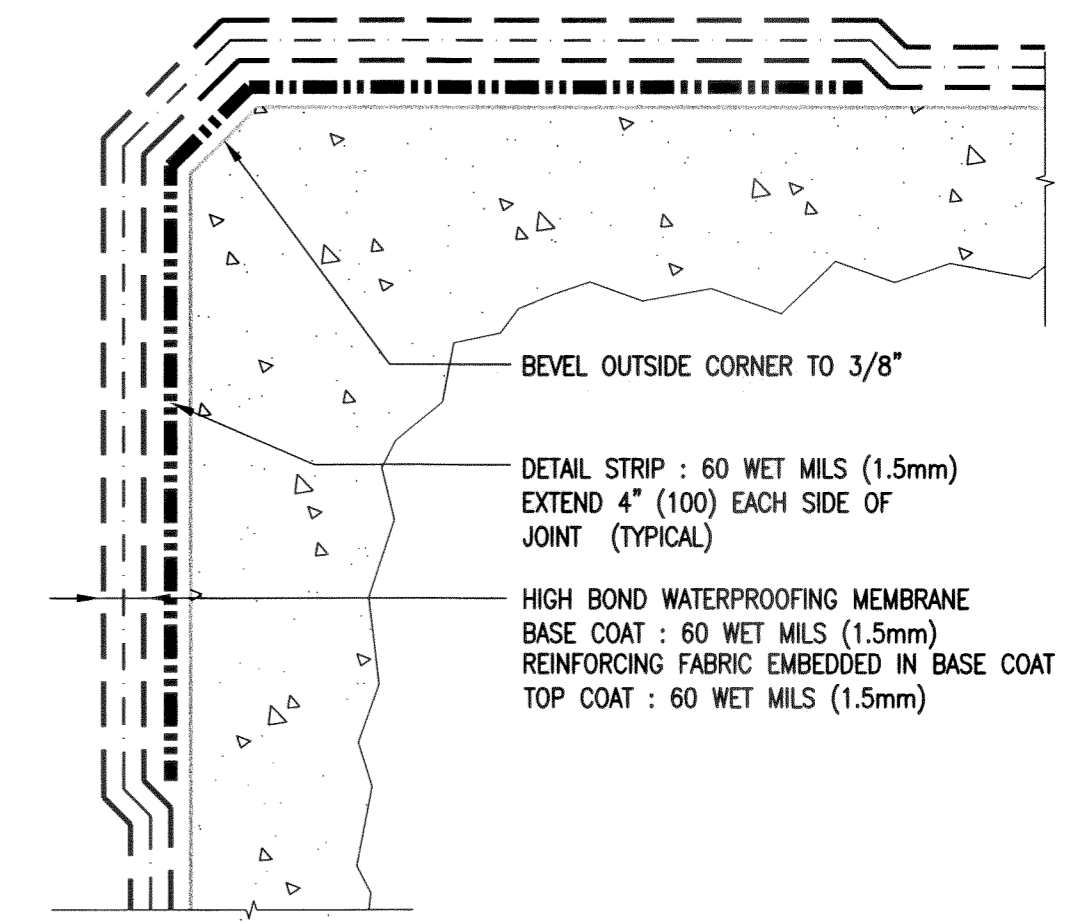
2 TYPICAL DETAIL AT PIPE PENETRATION
S-2 N.T.S.
INCLUDE IN FIXED PRICE FOR WALL PIPING PENETRATIONS.
(TO MAXIMUM OF 6-6" PIPES)



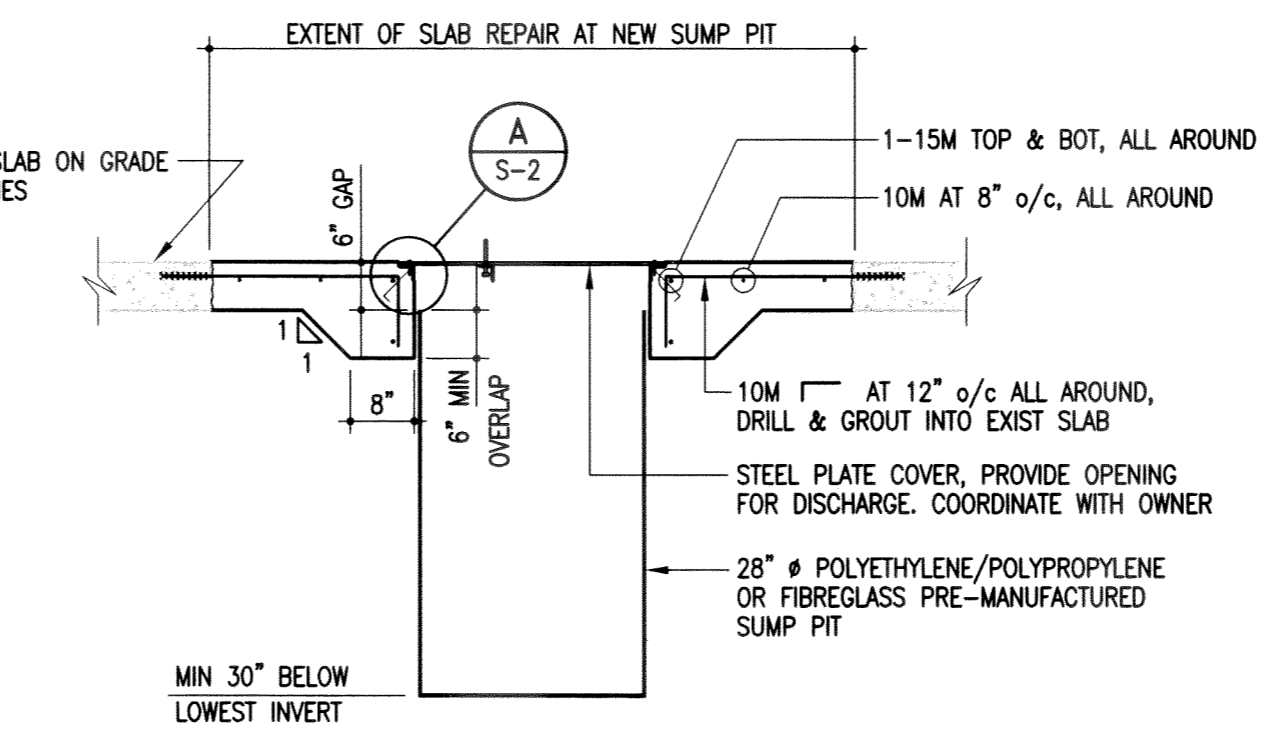
TYPICAL INSIDE CORNER DETAIL
SCALE : NTS (FIXED PRICE)



3 SECTION
S-2 1/2" = 1'-0"

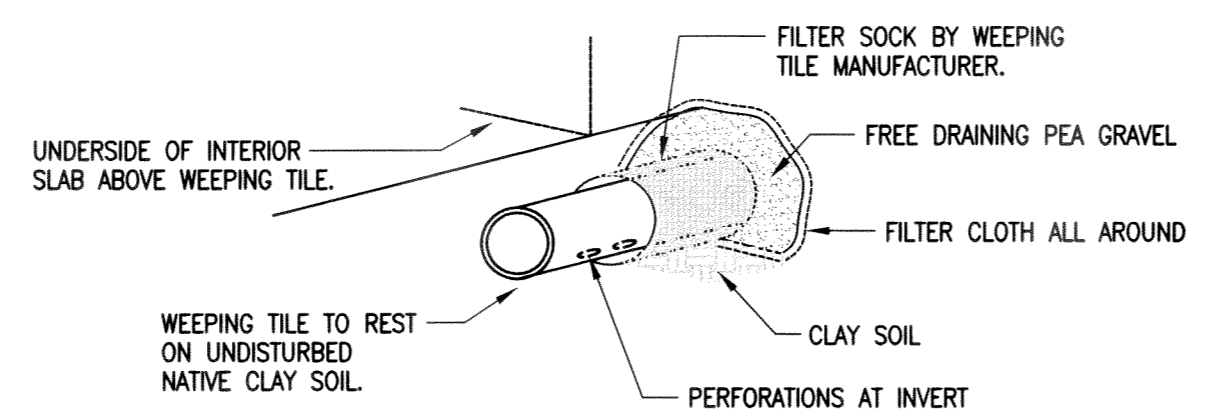


TYPICAL OUTSIDE CORNER DETAIL
SCALE : NTS (FIXED PRICE)



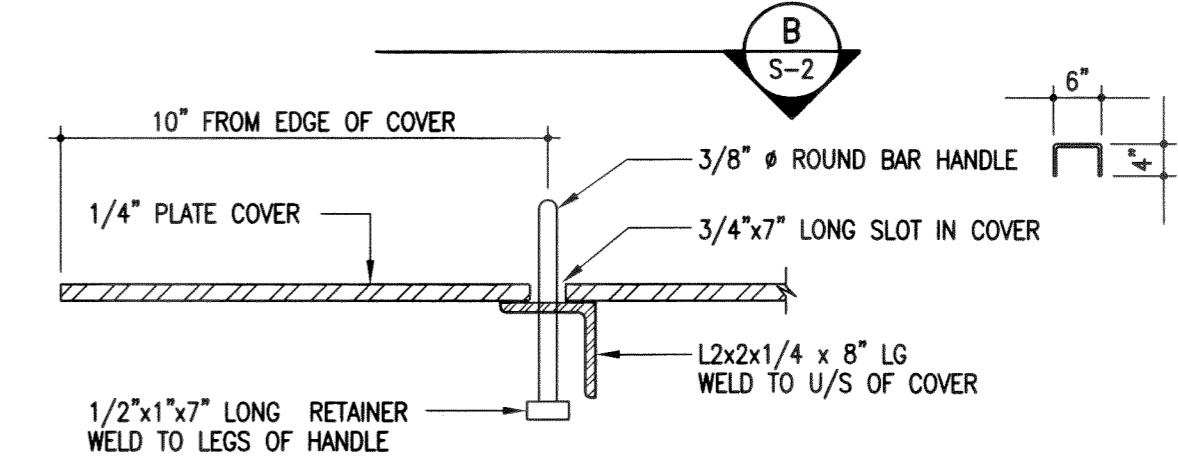
4 SECTION
S-2 1/2" = 1'-0"

REFER TO DRAWINGS ME-1 AND ME-2 FOR
MECHANICAL/ELECTRICAL REQUIREMENTS
RELATED TO PUMPING AND DISCHARGE OF
WATER COLLECTED IN PITS



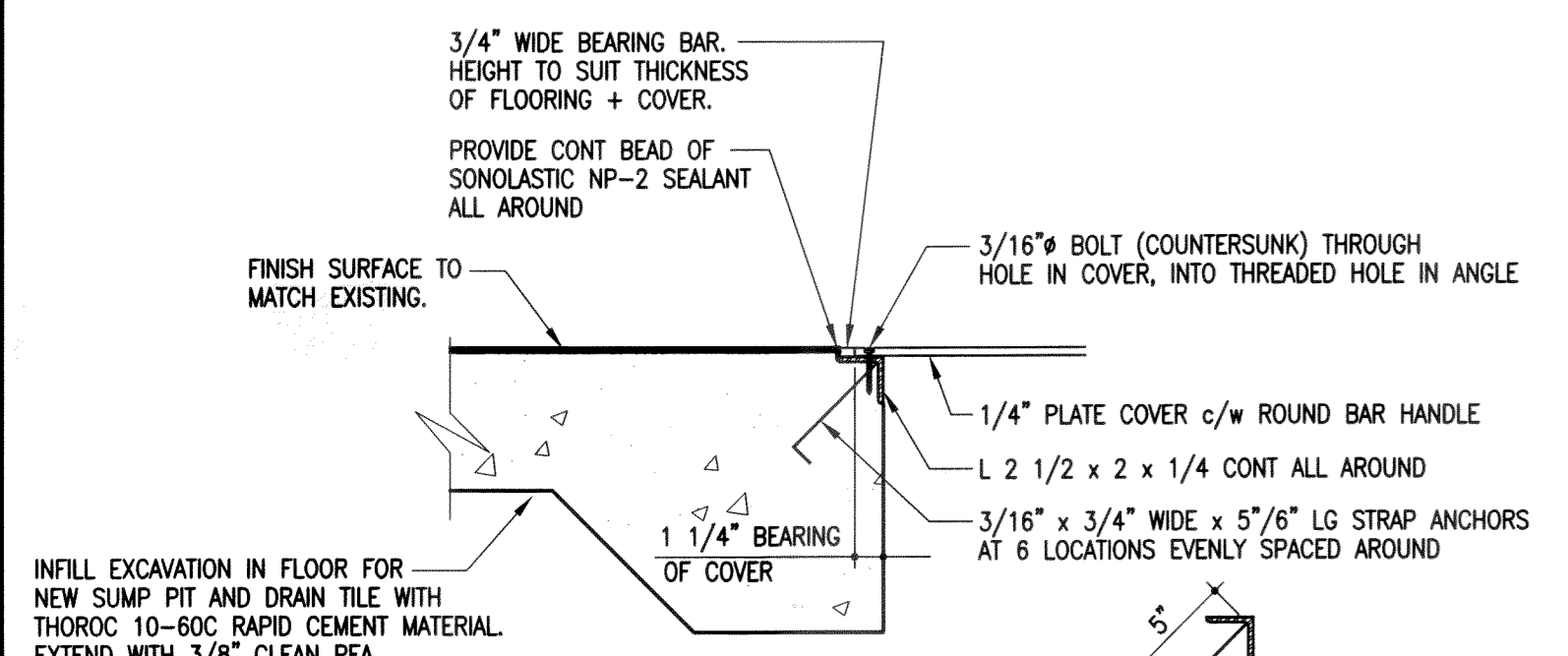
TYPICAL WEeping TILE INSTALLATION
NOTES : TOP OF DRAIN TILE MUST BE BELOW BOTTOM
OF BASEMENT SLAB.

C DETAIL
S-2 N.T.S.



TYPICAL SUMP PIT COVER DETAIL

B PLAN DETAIL
S-2 N.T.S.



A DETAIL
S-2 1 1/2" = 1'-0"

APEGM
Certificate of Authorization
Crosier Kilgour & Partners Ltd.
No. 235 Date: Aug 1, 2008

No.	Date	Revisions	By
0	AUG 1, 2008	ISSUED FOR TENDER	HJL



300-275 Carlton Street
Winnipeg, Manitoba R3C 5R6
T 204. 943. 7501
F 204. 943. 7507

**Crosier Kilgour
& Partners Ltd.**
CONSULTING STRUCTURAL ENGINEERS

The General Contractor shall check & verify all dimensions and shall report any errors or omissions to the designers.

Project FOUNDATION WATERPROOFING - CARNEGIE BUILDING 380 WILLIAM AVENUE WINNIPEG, MANITOBA						Sheet No. S-2
Drawing Title SECTIONS & DETAILS						
Design HJL	Drawn TW	Checked HJL	Scale AS NOTED	Date AUG 1, 2008	File 2008-0245	