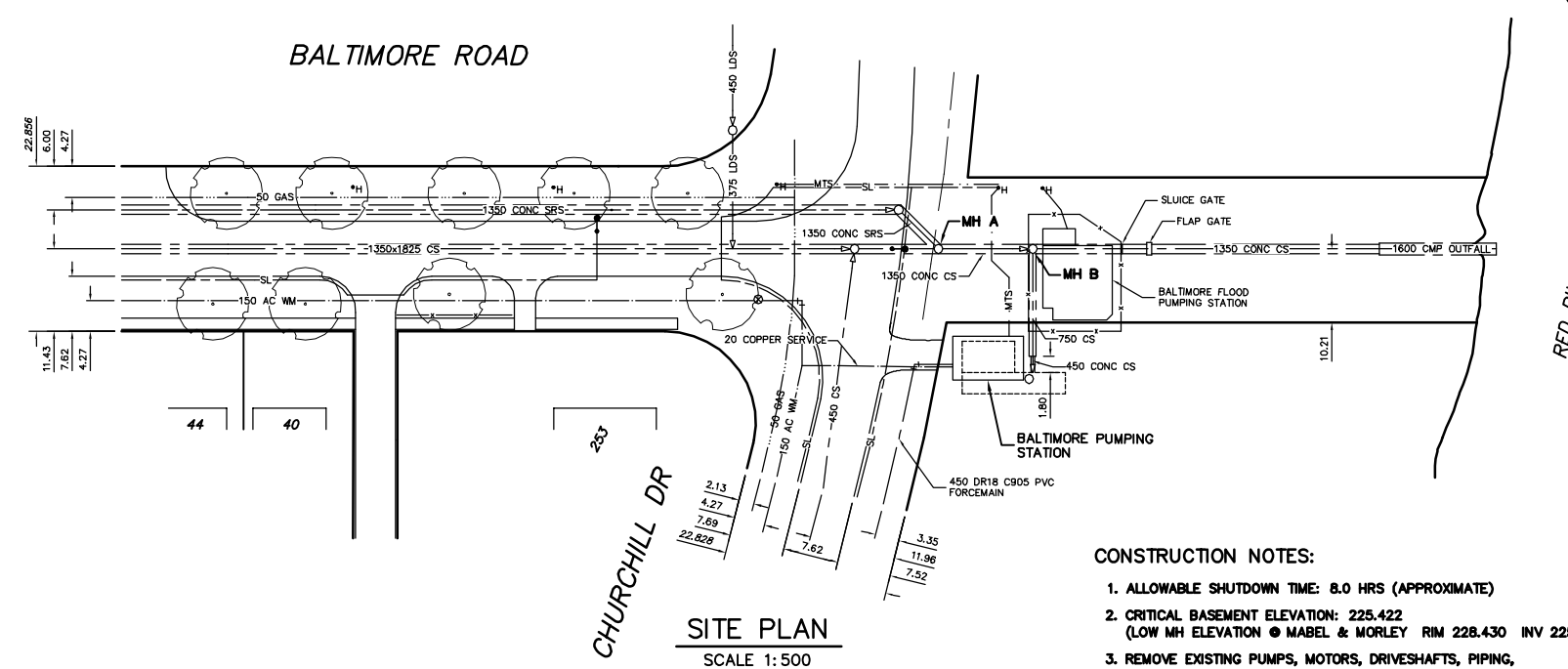


**MATERIALS LIST**

ITEM	DESCRIPTION	ENDS	LENGTH	QUANTITY
1	FLOWERVE MODEL 10M16A PUMP	FL	-	3 *
2	300# PIPE	FL	-	3
3	300# GATE VALVE	FL	-	6
4	300# PIPE	FL	-	3
5	300# PIPE	FL	2754	1
6	350 X 300 X 300 CAST IRON REDUCING WYE	FL	-	1
7	400 X 350 X 300 CAST IRON REDUCING WYE	FL	-	1
8	450 X 400 CAST IRON STD RAD REDUCING BEND	FL	-	1
9	450 "UNFLANGE" OR APPROVED EQUAL REMOVABLE FLANGE	-	-	3
10	350# PIPE	FL	7024	1
11	300# PIPE	FL	-	1
12	300# CAST IRON 45' STD RAD BEND	FL	-	1
14	PUMP MOTOR AND BASE	-	-	3
15	450# PIPE	PE X FL	-	1
16	300 "UNFLANGE" OR APPROVED EQUAL REMOVABLE FLANGE	-	-	6
17	300 CHECK VALVE WITH RUBBER FLAP	FL X FL	-	3
18	450# GATE VALVE	FL X FL	432	1
19	300# PIPE	FL	824	3
20	300 CAST IRON 90' STD RAD BEND	FL	-	3
21	450# PIPE	FL	-	1
22	450 ROSEMOUNT OR ABB FLOWMETER	FL	-	1
23	450# PIPE	FL X PE	-	1
24	300 X 250 CAST IRON REDUCING STD ELBOW	FL	-	3
25	PIPE HANGER (SEE DETAIL ON THIS DWG)	-	AS-REQUIRED	3
26	PIPE SUPPORTS	-	-	3

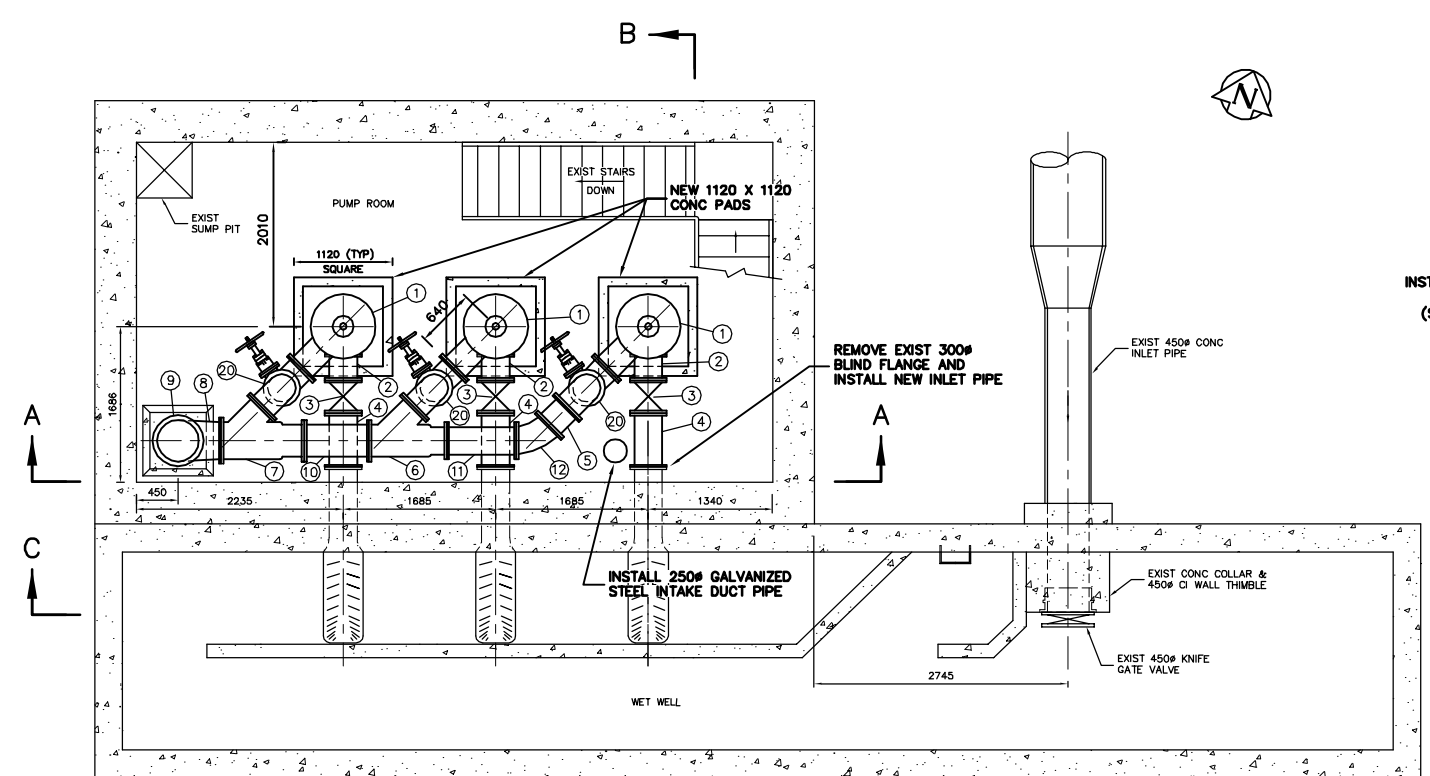
NOTE: LENGTHS & DIMENSIONS SHOWN AS ± TO BE FIELD CONFIRMED BY CONTRACTOR  
 \* ITEMS SUPPLIED BY CITY  
 - CONTRACTOR TO SUPPLY AND INSTALL POWER CABLES AND CONDUIT FROM PUMP MOTORS TO ELECTRICAL CONTROL PANEL IN STATION



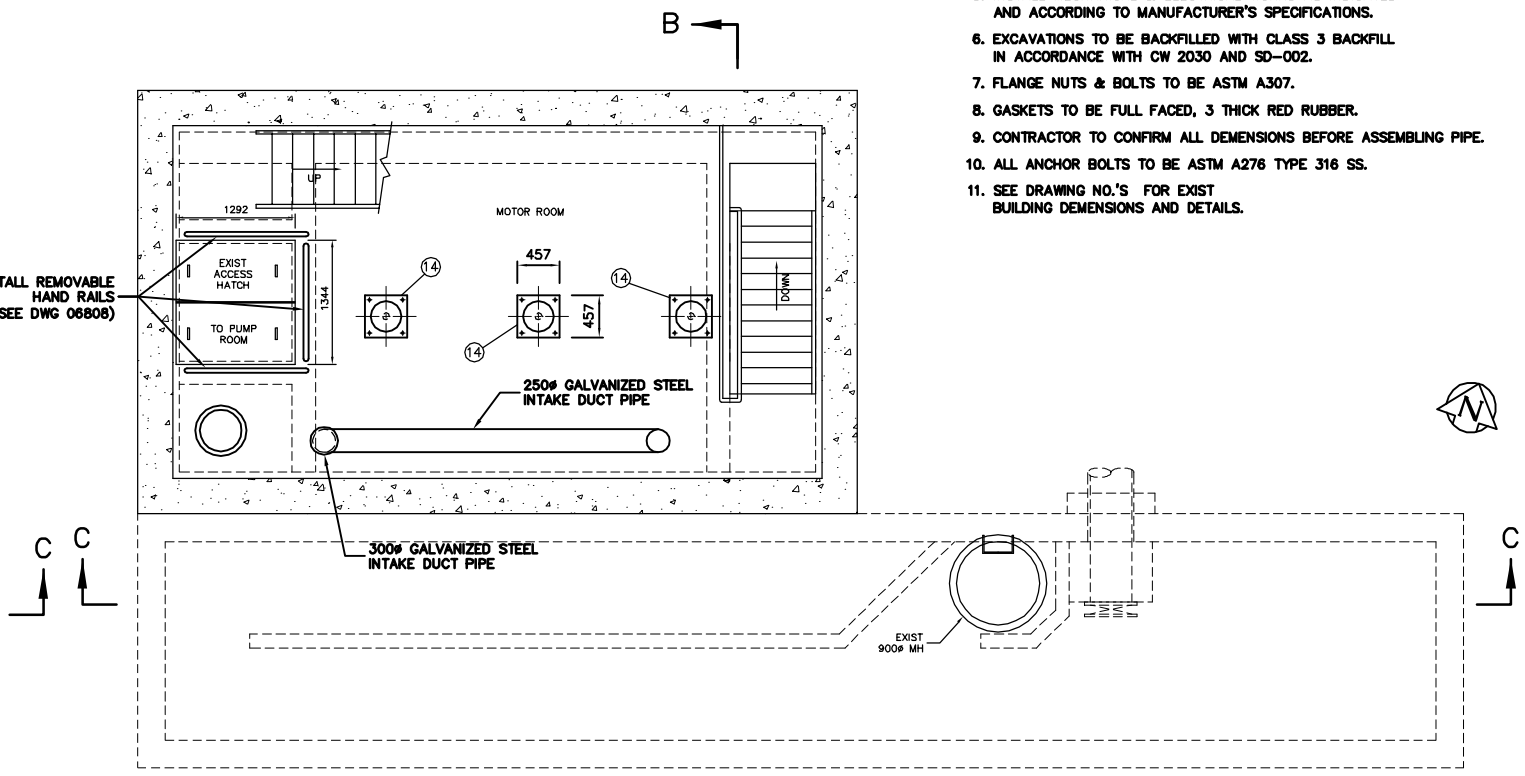
**SITE PLAN**  
SCALE 1:500

**CONSTRUCTION NOTES:**

- ALLOWABLE SHUTDOWN TIME: 8.0 HRS (APPROXIMATE)
- CRITICAL BASEMENT ELEVATION: 225.422 (LOW MH ELEVATION @ MABEL & MORLEY RIM 228.430 INV 225.910)
- REMOVE EXISTING PUMPS, MOTORS, DRIVESHAFTS, PIPING, VALVES, FITTINGS, AND OTHER MATERIALS AS REQUIRED.
- PROVIDE TEMPORARY PUMPING OF WASTEWATER DURING CONSTRUCTION.
- INSTALL MECHANICAL & ELECTRICAL WORKS AS INDICATED AND ACCORDING TO MANUFACTURER'S SPECIFICATIONS.
- EXCAVATIONS TO BE BACKFILLED WITH CLASS 3 BACKFILL IN ACCORDANCE WITH CW 2030 AND SD-002.
- FLANGE NUTS & BOLTS TO BE ASTM A307.
- GASKETS TO BE FULL FACED, 3 THICK RED RUBBER.
- CONTRACTOR TO CONFIRM ALL DIMENSIONS BEFORE ASSEMBLING PIPE.
- ALL ANCHOR BOLTS TO BE ASTM A276 TYPE 316 SS.
- SEE DRAWING NO.'S FOR EXIST BUILDING DIMENSIONS AND DETAILS.



**PUMP ROOM**  
**PLAN VIEW - ELEV 223.600**  
SCALE 1:40



**MOTOR ROOM**  
**PLAN VIEW - ELEV 227.100**  
SCALE 1:40

200 WM	WATERMAIN	200 WM	SL, HYDRO	150 WM	WATERMAIN	150 WM
⊕	HYDRANT	⊕	MTS	⊕	HYDRANT	⊕
⊗	VALVE	⊗	TRAFFIC SIGNALS	⊗	VALVE	⊗
525 LDS	LAND DRAINAGE SEWER	525 LDS	GAS	50 GAS	300 LDS	LAND DRAINAGE SEWER
375 WWS	WASTEWATER SEWER	375 WWS	SURVEY BAR	250 WWS	250 WWS	WASTEWATER SEWER
○	MANHOLE	●	FENCE	⊖	⊖	PROFILE
□	CATCH BASIN	■	POLE - HYDRO, MTS	///	///	GROUND ABOVE PIPE
▽	CURB INLET	▽	CURB STOP	⊖	⊖	⊖ DITCH (NORTH & WEST)
⊔	JUNCTIONS	⊔	GUY ANCHOR	⊖	⊖	⊖ DITCH (SOUTH & EAST)
⊔	CULVERT	⊔	LIGHT STANDARD	⊖	⊖	⊖ GUTTER (NORTH & WEST)
⊕	ANODE	⊕	TREE	⊖	⊖	⊖ GUTTER (SOUTH & EAST)
EXISTING	LEGEND-PLAN	PROPOSED	EXISTING	LEGEND-PLAN	PROPOSED	EXISTING
---	LEGEND-PROFILE	---	---	---	---	---

B.M. ELEV.	FIELD BOOK #		
POSTED TO LBIS	DATE		
NO.	REVISIONS	DATE	BY

LOCATION APPROVED UNDERGROUND STRUCTURES

DESIGNED BY DB CHECKED BY TW

DRAWN BY CJH APPROVED BY KZ

HOR. SCALE 1:250 VERTICAL 1:50

DATE 2008 08 01

ENGINEER'S SEAL

ORIGINAL SIGNED BY K.R. ZUREK 08/08/01

**THE CITY OF WINNIPEG**  
WATER AND WASTE DEPARTMENT

2008 PUMPING STATION UPGRADES  
INSTALLATION OF NEW PUMPING UNITS AND MODIFICATIONS TO THE  
**BALTIMORE WASTEWATER PUMPING STATION**

SHEET 1 OF 17  
CITY DRAWING NUMBER 06794

PLAN VIEWS

METRIC  
WHOLE NUMBERS INDICATE MILLIMETRES  
DECIMALIZED NUMBERS INDICATE METRES