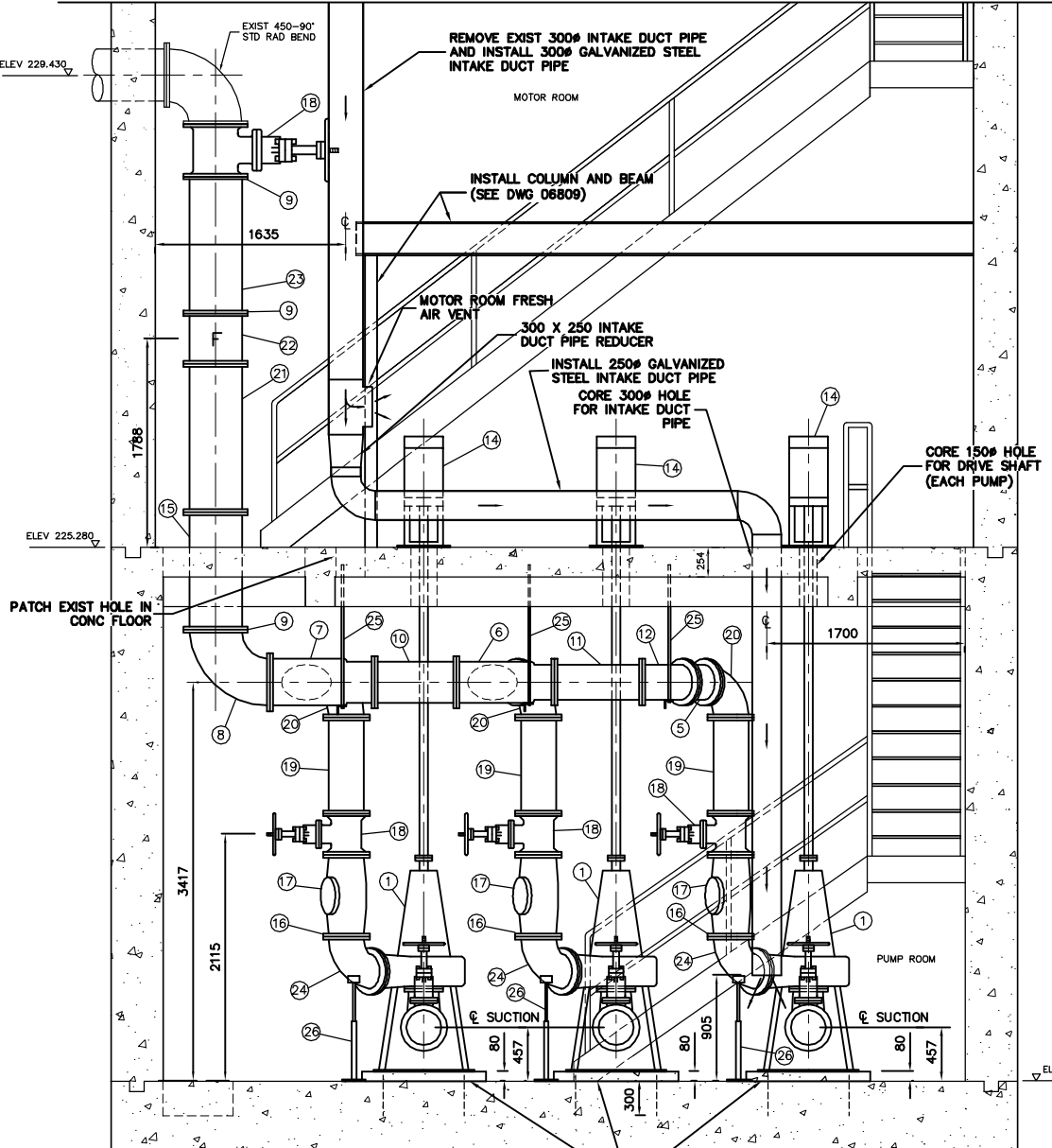


PIPE HANGER DETAIL
SCALE 1:10

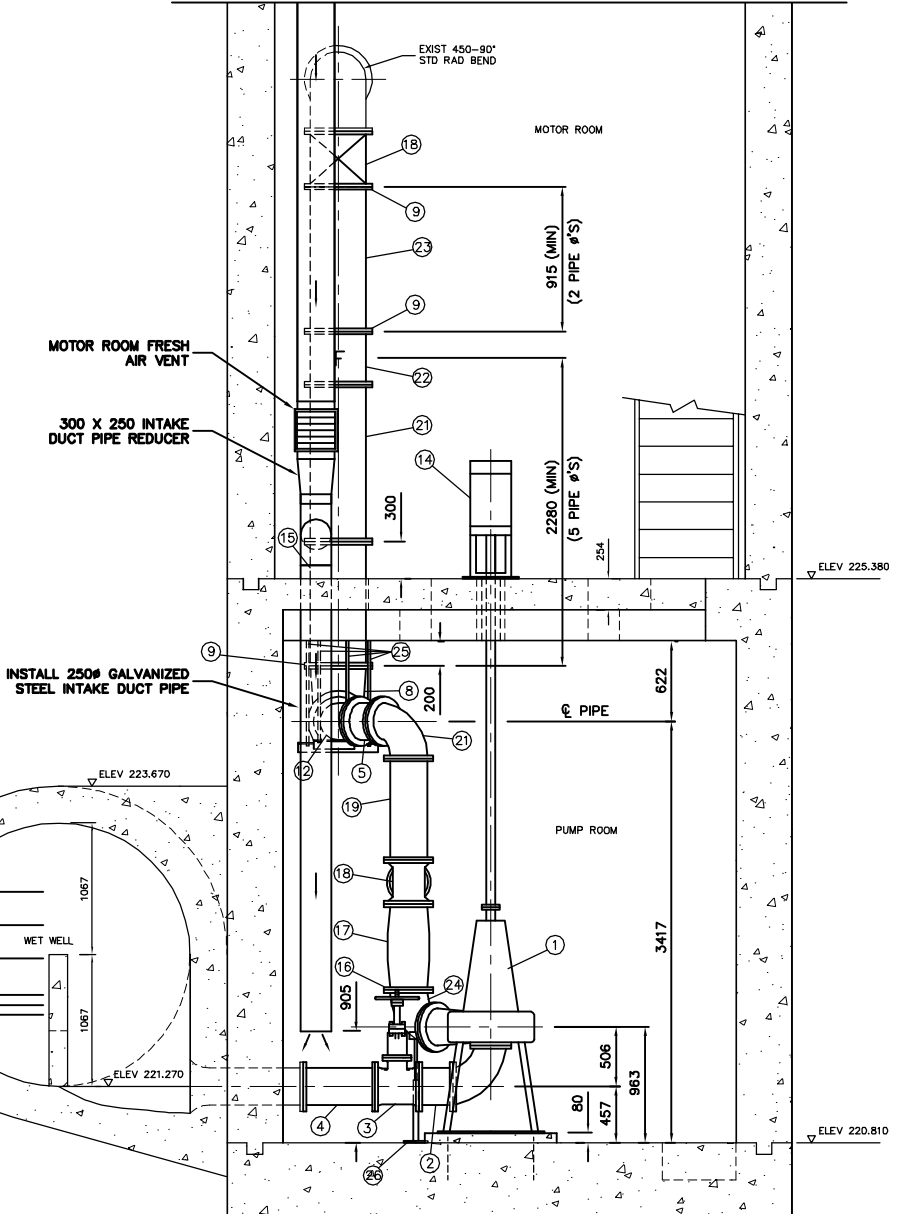
MATERIALS LIST

ITEM	DESCRIPTION	ENDS	LENGTH	QUANTITY
1	FLOWSERVE MODEL 10M16A PUMP	FL	-	3 *
2	300# PIPE	FL	-	3
3	300# GATE VALVE	FL	-	6
4	300# PIPE	FL	-	3
5	300# PIPE	FL	275±	1
6	350 X 300 X 300 CAST IRON REDUCING WYE	FL	-	1
7	400 X 350 X 300 CAST IRON REDUCING WYE	FL	-	1
8	450 X 400 CAST IRON STD RAD REDUCING BEND	FL	-	1
9	450 "UNIFLANGE" OR APPROVED EQUAL REMOVABLE FLANGE	-	-	3
10	350# PIPE	FL	702±	1
11	300# PIPE	FL	-	1
12	300# CAST IRON 45° STD RAD BEND	FL	-	1
14	PUMP MOTOR AND BASE	-	-	3
15	450# PIPE	PE X FL	-	1
16	300 "UNIFLANGE" OR APPROVED EQUAL REMOVABLE FLANGE	-	-	6
17	300 CHECK VALVE WITH RUBBER FLAP	FL X FL	-	3
18	450# GATE VALVE	FL X FL	432	1
19	300# PIPE	FL	824	3
20	300 CAST IRON 90° STD RAD BEND	FL	-	3
21	450# PIPE	FL	-	1
22	450 ROSEMOUNT OR ABB FLOWMETER	FL	-	1
23	450# PIPE	FL X PE	-	1
24	300 X 250 CAST IRON REDUCING STD ELBOW	FL	-	3
25	PIPE HANGER (SEE DETAIL ON THIS DWG)	-	AS-REQUIRED	3
26	PIPE SUPPORTS	-	-	3

NOTE: LENGTHS & DIMENSIONS SHOWN AS ± TO BE FIELD CONFIRMED BY CONTRACTOR
 * ITEMS SUPPLIED BY CITY
 - CONTRACTOR TO SUPPLY AND INSTALL POWER CABLES AND CONDUIT FROM PUMP MOTORS TO ELECTRICAL CONTROL PANEL IN STATION



FOR CONSTRUCTION NOTES:
SEE DRAWING 06020



PUMP 3 'ON'
ELEV. 223.070
PUMP 2 'ON'
ELEV. 222.770
PUMP 1 'ON'
ELEV. 222.470
PUMP 3 'OFF'
ELEV. 222.140
PUMP 2 'OFF'
ELEV. 222.050
PUMP 1 'OFF'
ELEV. 221.960

METRIC
WHOLE NUMBERS INDICATE MILLIMETRES
DECIMALIZED NUMBERS INDICATE METRES

200 WM	WATERMAIN	200 WM	SL, HYDRO	150 WM	WATERMAIN	150 WM
+	HYDRANT	+	MTS	+	HYDRANT	+
⊙	VALVE	⊙	TRAFFIC SIGNALS	⊙	VALVE	⊙
525 LDS	LAND DRAINAGE SEWER	525 LDS	GAS	50 GAS	300 LDS	LAND DRAINAGE SEWER
375 WWS	WASTEWATER SEWER	375 WWS	SURVEY BAR	250 WWS	WASTEWATER SEWER	250 WWS
○	MANHOLE	●	FENCE	⊙	PROFILE	⊙
□	CATCH BASIN	■	POLE - HYDRO, MTS	=====	GROUND ABOVE PIPE	=====
▽	CURB INLET	▽	CURB STOP	⊙	☉ DITCH (NORTH & WEST)	⊙
⊙	JUNCTIONS	⊙	GUY ANCHOR	▽	☉ DITCH (SOUTH & EAST)	▽
—	CULVERT	—	LIGHT STANDARD	⊙	☉ GUTTER (NORTH & EAST)	⊙
⊙	ANODE	⊙	TREE	⊙	☉ GUTTER (SOUTH & EAST)	⊙
EXISTING	LEGEND-PLAN	PROPOSED	EXISTING	LEGEND-PLAN	PROPOSED	EXISTING
EXISTING	LEGEND-PROFILE	PROPOSED	EXISTING	LEGEND-PROFILE	PROPOSED	EXISTING

LOCATION APPROVED
UNDERGROUND STRUCTURES

SUPV. U/G STRUCTURES COMMITTEE DATE

NOTE:
LOCATION OF UNDERGROUND STRUCTURES AS SHOWN ARE BASED ON THE BEST INFORMATION AVAILABLE BUT NO GUARANTEE IS GIVEN THAT THE GIVEN LOCATIONS ARE EXACT. CONFIRMATION OF EXISTENCE AND EXACT LOCATION OF ALL SERVICES MUST BE OBTAINED FROM THE INDIVIDUAL UTILITIES BEFORE PROCEEDING WITH CONSTRUCTION.

B.M. ELEV.	FIELD BOOK #:
POSTED TO LBIS	
NO. REVISIONS	DATE BY

CITY OF WINNIPEG
WATER AND WASTE
ENGINEERING DIVISION

DESIGNED BY DB CHECKED BY TW
DRAWN BY C.J.H. APPROVED BY K.Z.
HOR. SCALE 1:250
VERTICAL SCALE 1:50
DATE 2008 08 01

ENGINEER'S SEAL
ORIGINAL SIGNED BY K.R. ZUREK
08/08/01

THE CITY OF WINNIPEG
WATER AND WASTE DEPARTMENT

2008 PUMPING STATION UPGRADES
INSTALLATION OF NEW PUMPING UNITS AND MODIFICATIONS TO THE
BALTIMORE WASTEWATER PUMPING STATION

SHEET 2 OF 17
CITY DRAWING NUMBER 06795