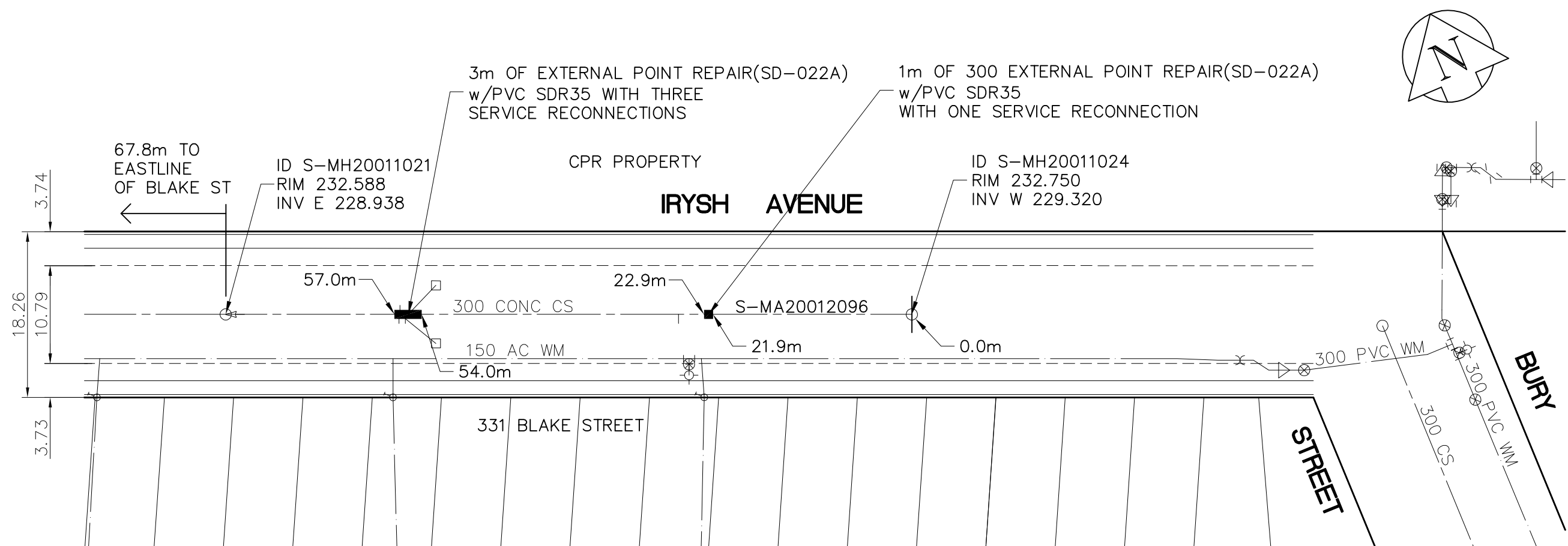


NOTES:
 1. CONTRACTOR TO VERIFY LIMITS OF SEWER REPAIRS PRIOR TO EXCAVATION BY MEANS OF VIDEO INSPECTION.
 2. CONTRACTOR TO PROVIDE VIDEO INSPECTION OF SEWER SERVICES WITHIN LIMITS OF REPAIR IN PRESENCE OF CONTRACT ADMINISTRATOR TO DETERMINE IF SERVICE RENEWAL IS REQUIRED.
 3. ALL BACKFILL TO BE CLASS 5 BACKFILL UNDER BOULEVARDS AND CLASS 3 UNDER OR WITHIN 1.0m OF PAVEMENTS AND SIDEWALKS.

SEWER JUNCTION INFORMATION FROM VIDEO INSPECTION S-MA20012096	
DISTANCE FROM S-MH20011024	
21.9m WEST	- 150mm CONNECTION NORTH -
55.6m WEST	- 150mm CONNECTION SOUTH -
56.4m WEST	- 150mm CONNECTION NORTH -
56.5m WEST	- 150mm CONNECTION SOUTH -

SEWER SERVICE INFORMATION		
ADDRESS	SIZE	R DIST JUNCTION TIE
NO SERVICE INFORMATION WITHIN LIMITS OF REPAIR		



LEGEND

52.0 MEASUREMENT TO REPAIR FROM REFERENCE MH SHOWN THUS... 0.0

METRIC
 WHOLE NUMBERS INDICATE MILLIMETRES
 DECIMALIZED NUMBERS INDICATE METRES

APEGM
 Certificate of Authorization
 Earth Tech Canada Inc.
 No. 730

B.M. S.E. Cor. Logan Ave. & Quetch St., Tblt. in N. Conc. foundation No. 1410 Logan Ave. (Weston School), 0.5 m ELEV. C. & 0.2 m below brick of N.W. Cor. of Bldg.				ENGINEER'S SEAL 			
DESIGNED BY	PL	CHECKED BY	PL	2008 SEWER RENEWALS		SHEET	OF
DRAWN BY	JP	APPROVED BY	KWF	IRYSH AVE BETWEEN BLAKE ST AND BURY ST		9	16
0 ISSUED FOR TENDER	2008/06/01	PL	HOR. SCALE: 1:500	RELEASED FOR CONSTRUCTION BY: K. ZUREK		CITY DRAWING NUMBER	
A ISSUED FOR REVIEW	2008/07/16	PL	VERTICAL:	CONSULTANT DRAWING NO. 104450-08		8660	
NO. REVISIONS	DATE	BY	DATE	2008/03/31	DATE	2008/08/07	