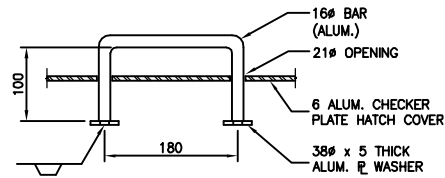
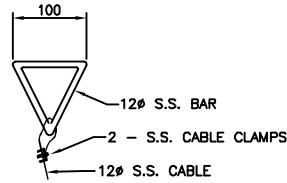


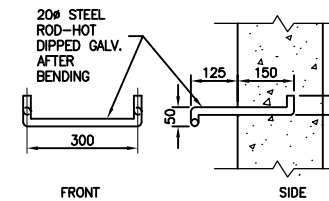
**A** HATCH COVER BOLT DOWN SECTION  
1:5



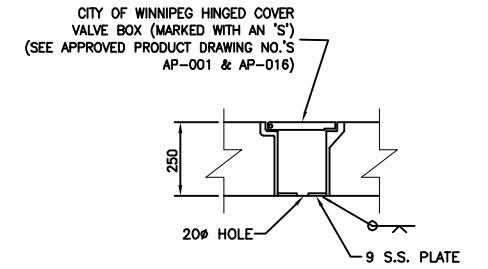
**E** SECTION  
1:5



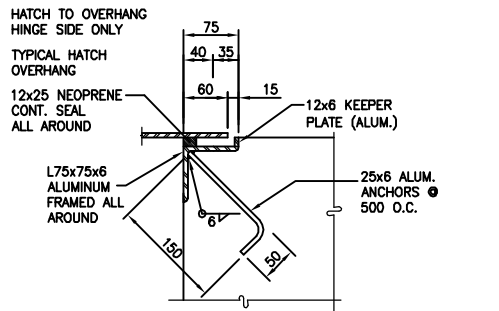
**6** DETAIL  
1:5



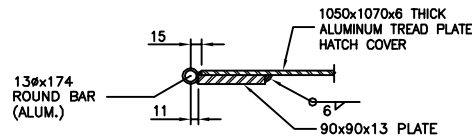
**8** TYPICAL LADDER RUNG DETAIL  
1:10  
NOTE: RUNGS TO BE SPACED @ 300 O.C.



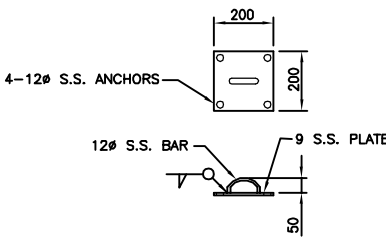
**9** DETAIL  
1:5



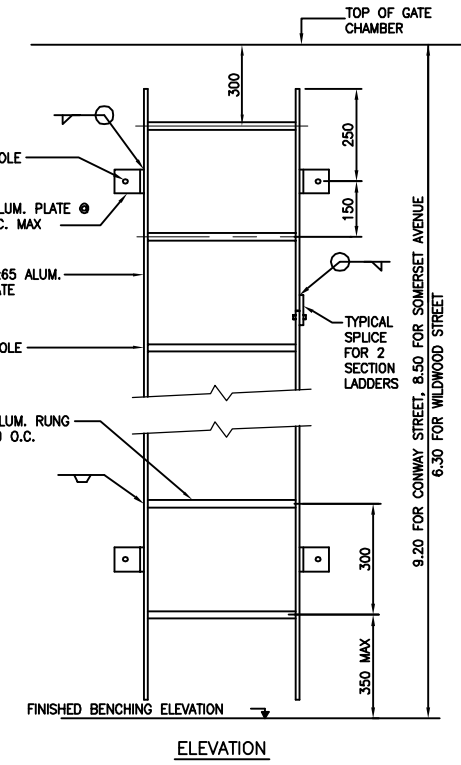
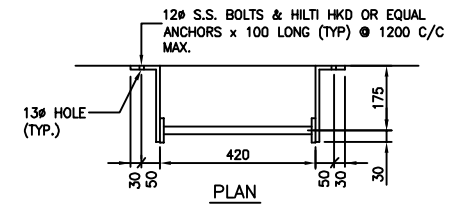
**B** HATCH SUPPORT SECTION  
1:5



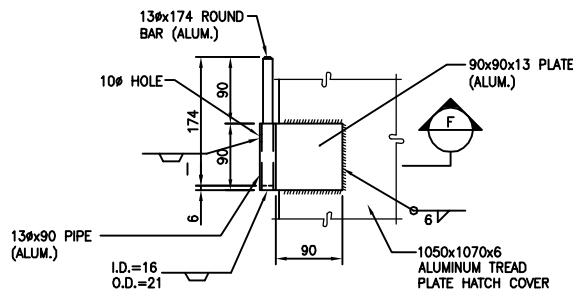
**F** SECTION  
1:5



**7** LIFTING CABLE GUIDE DETAIL  
NTS

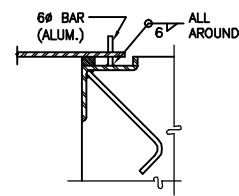


**4** LADDER DETAIL  
1:10

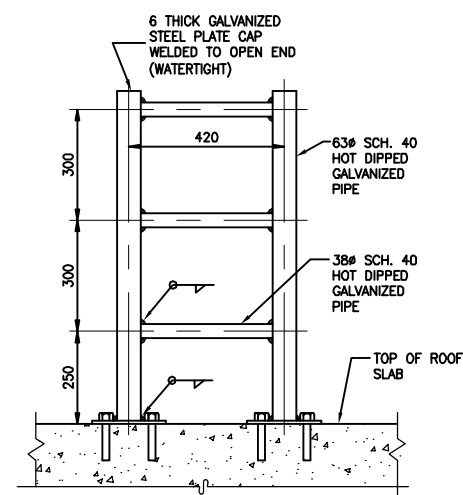
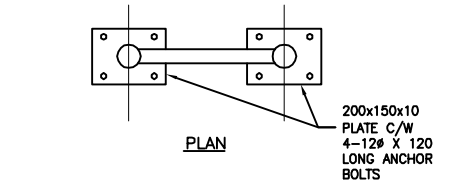


NOTE: HINGE VIEW FROM BELOW

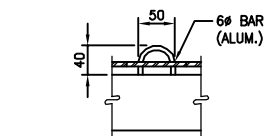
**1** DETAIL  
1:5



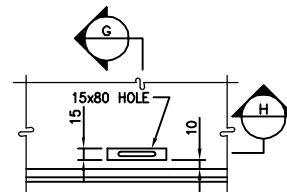
**G** SECTION  
1:5



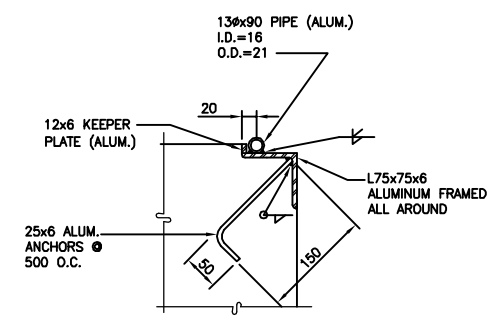
**3** HAND HOLD DETAIL  
1:10



**H** SECTION  
1:5

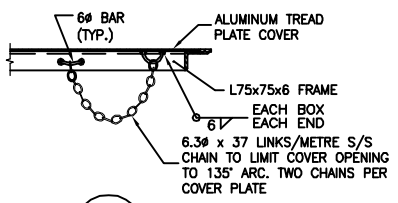


**2** HATCH LOCK HASP PLAN  
1:5  
2 REQUIRED PER HATCH

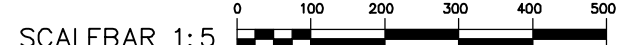


NOTE: DISCONTINUE NEOPRENE SEAL AT HINGE LOCATION

**C** SECTION  
1:5



**D** SECTION  
1:10



NOTE: ALL NUTS, BOLTS AND FASTENERS TO BE TYPE 316 STAINLESS STEEL

METRIC  
WHOLE NUMBERS INDICATE MILLIMETRES  
DECIMALIZED NUMBERS INDICATE METRES

B.M. ELEV.	FIELD BOOK #:	<b>CITY OF WINNIPEG WATER AND WASTE ENGINEERING DIVISION</b>		ENGINEER'S SEAL	<b>THE CITY OF WINNIPEG WATER AND WASTE DEPARTMENT</b>	SHEET 11 OF 11 CITY DRAWING NUMBER
POSTED TO LBS		DESIGNED BY DGS	CHECKED BY SC	ORIGINAL SIGNED BY S.R.J. COURNOYER 08/08/26		
		DRAWN BY CJH	APPROVED BY SC		<b>2008 OUTFALL GATE CHAMBER CONSTRUCTION AND UPGRADES SOMERSET, CONWAY AND WILDWOOD GATE CHAMBERS MISCELLANEOUS DETAILS</b>	LD-5073
		HOR. SCALE VERTICAL SHOWN	RELEASED FOR CONSTRUCTION	BID OPPORTUNITY: 629-2008 FILENAME: LD-5073.dwg PLOT DATE: 2008 08 26		
NO.	REVISIONS	DATE	BY	DATE		