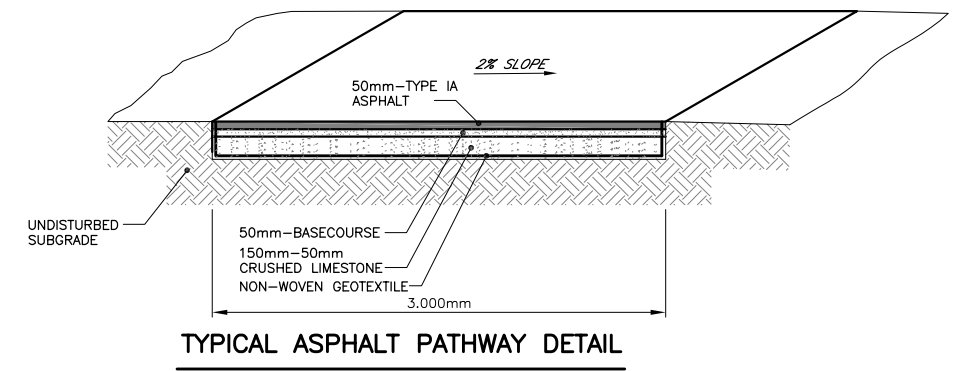
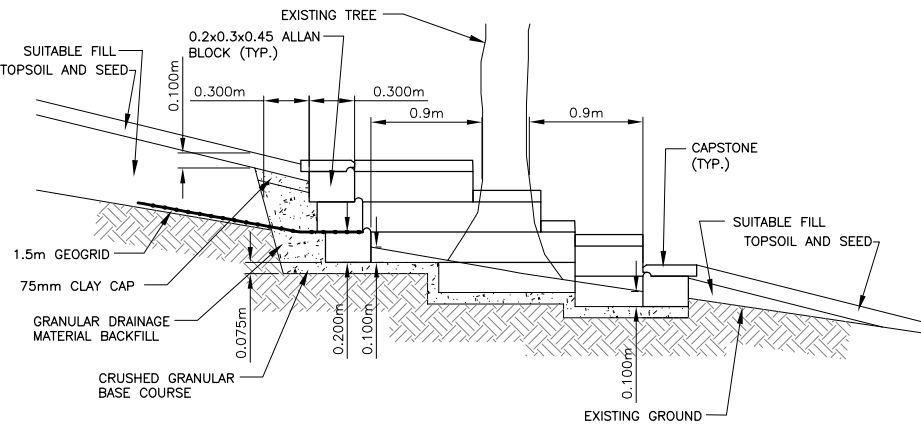


KGS FILE NO.: P:\Projects\2007\07-0107-02-UPPER_PATH_08MAY27.dwg - Tab: 02 - Aug 25, 2008 - 1:29pm - User: JFriesen



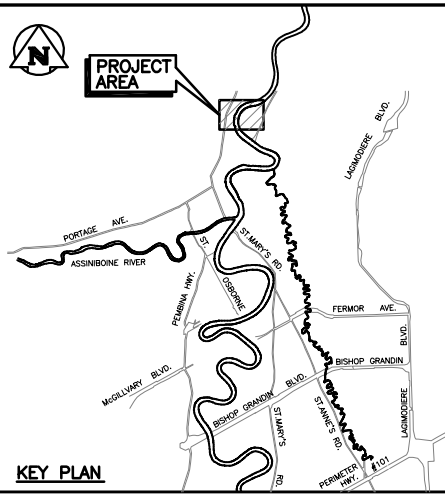
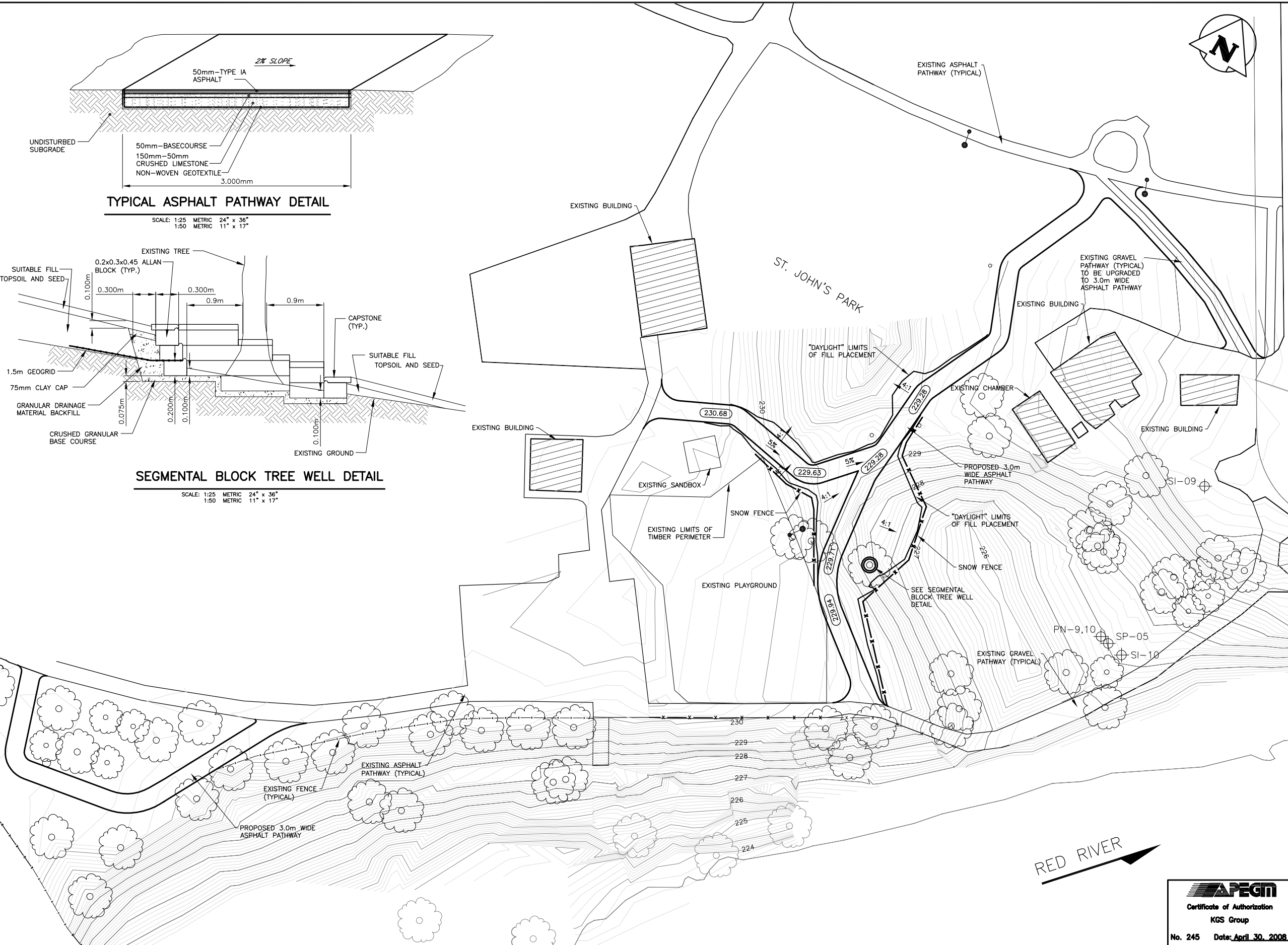
TYPICAL ASPHALT PATHWAY DETAIL

SCALE: 1:25 METRIC 24" x 36"
1:50 METRIC 11" x 17"

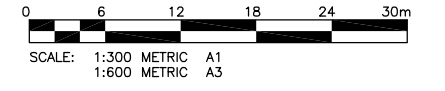


SEGMENTAL BLOCK TREE WELL DETAIL

SCALE: 1:25 METRIC 24" x 36"
1:50 METRIC 11" x 17"



- NOTES:**
1. THIS DRAWING TO BE READ IN CONJUNCTION WITH BID OPPORTUNITY No. 637-2008.
 2. SITE PLAN BASED ON APRIL, 2007 AND MAY, 2008 KGS GROUP TOPOGRAPHIC SURVEYS.
 3. EXCAVATE ORGANIC GROWTH AND TOPSOIL WITHIN "DAYLIGHT" LIMITS OF FILL PLACEMENT BEFORE PLACING FILL.
 4. THE CONTRACTOR SHALL RESTORE ANY DAMAGED AREAS IN THE PARK CAUSED BY CONSTRUCTION. DAMAGED AREAS SHALL BE RESTORED TO THE CONDITIONS PRIOR TO CONSTRUCTION.



SCALE: 1:300 METRIC A1
1:600 METRIC A3

APEGM
Certificates of Authorization
KGS Group
No. 245 Date: April 30, 2008

150 WM	WATERMAIN	150 WM	HYDRO M.T.S.	230	GROUND CONTOUR
HYDRANT	VALVE	PROPERTY LINE	SURVEY BAR	TH1	SOIL TEST HOLE
LAND DRAINAGE SEWER	WASTE WATER SEWER	MANHOLE	CATCH BASIN	CURB INLET	TREE
JUNCTIONS	CULVERT	GAS	EXISTING	LEGEND-PLAN	PROPOSED
LEGEND-PLAN	PROPOSED	EXISTING	LEGEND-PLAN	PROPOSED	EXISTING
LEGEND-PROFILE	PROPOSED	LEGEND-PLAN	PROPOSED	EXISTING	LEGEND-PROFILE
PROPOSED	PROPOSED	PROPOSED	PROPOSED	PROPOSED	PROPOSED

LOCATION APPROVED UNDERGROUND STRUCTURES

SUPV. U/G STRUCTURES COMMITTEE DATE

NOTE:
LOCATION OF UNDERGROUND STRUCTURES AS SHOWN ARE BASED ON THE BEST INFORMATION AVAILABLE BUT NO GUARANTEE IS GIVEN THAT ALL EXISTING UTILITIES ARE SHOWN OR THAT THE GIVEN LOCATIONS ARE EXACT. CONFIRMATION OF EXISTENCE AND EXACT LOCATION OF ALL SERVICES MUST BE OBTAINED FROM THE INDIVIDUAL AGENCIES BEFORE PROCEEDING WITH CONSTRUCTION.

B.M. XX-XXX	ELEV. XXX.XXX
0	ISSUED FOR TENDER
A	DRAFT
NO.	REVISIONS
DATE	BY
DATE	BY

KGS GROUP CONSULTING ENGINEERS & PROJECT MANAGERS
WINNIPEG (204) 896-1209
THUNDER BAY (807) 345-2233

DESIGNED BY: J.F. CHECKED BY: A.M.H.
DRAWN BY: J.F. APPROVED BY: R.Ke.

HOR. SCALE: 1:300
VERTICAL: -

RELEASED FOR CONSTRUCTION: DATE

DATE: AUGUST 2008

ENGINEER'S SEAL

PROVINCE OF MANITOBA
A.M. HAMILTON
Member 20488
REGISTERED PROFESSIONAL ENGINEER

CONSULTANT DRAWING NO.
07-0107-02-01

THE CITY OF WINNIPEG
PLANNING, PROPERTY AND DEVELOPMENT DEPARTMENT

ST. JOHN'S PARK
PATHWAY CONSTRUCTION

SHEET 01 OF 01
CAD FILE DRAWING NUMBER 07-0107-02-01
CITY DRAWING NUMBER