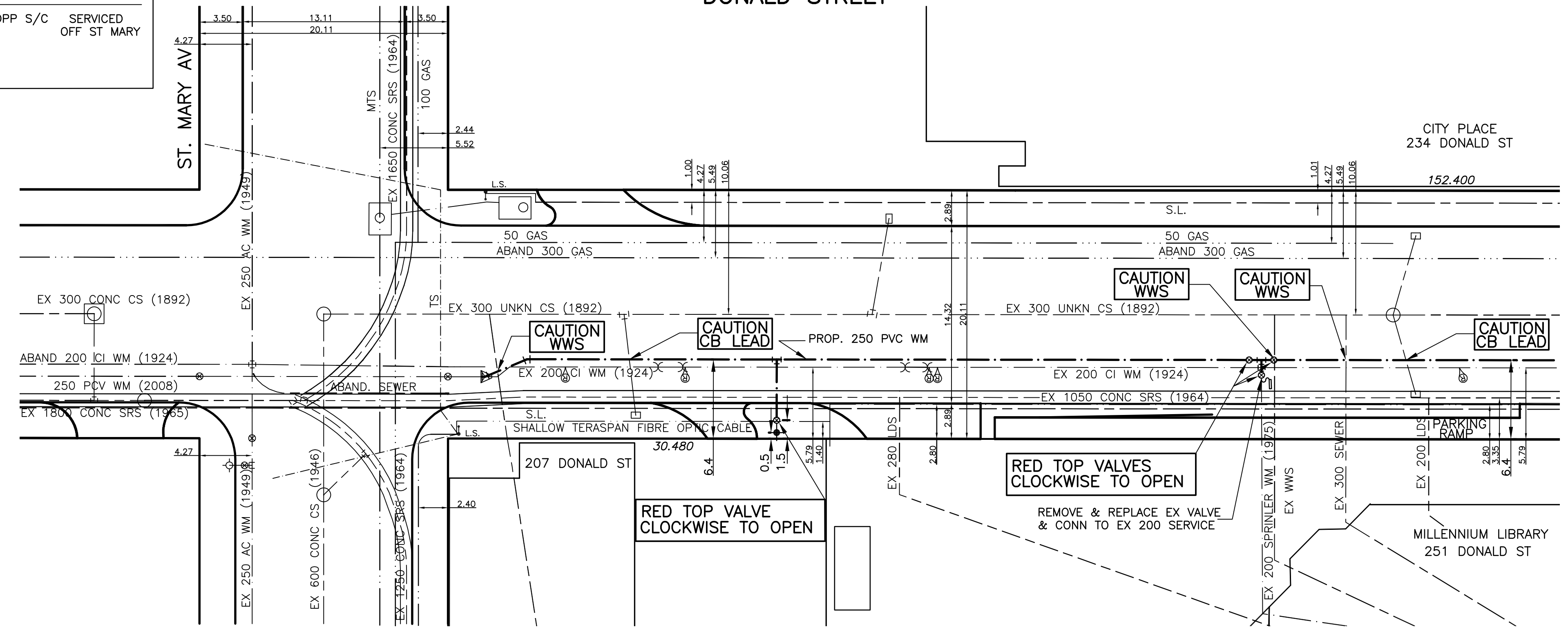


WATER SERVICE INFORMATION						
ADDRESS	SIZE(mm) & TYPE (ST.)	SIZE(mm) & TYPE (PROP.)	SHORT & LONG MEASUREMENT	CORP LOCATION	REMARKS	
207 DONALD COMMERCIAL	50 COPPER	50 COPPER	1.49 WEL BLDG	OPP S/C	SERVICED OFF ST MARY	
251 DONALD COMMERCIAL	200 UNKN SPRINKLER		87.23 SSL GRAHAM			

CHAINAGE ALONG EAST PROPERTY LINE OF DONALD STREET  
DONALD STREET



METRIC  
WHOLE NUMBERS INDICATE MILLIMETRES  
DECIMALIZED NUMBERS INDICATE METRES

- NOTES:**
1. ALL GATE VALVES ARE TO BE CLOCKWISE TO OPEN WITH A RED OPERATING NUT.
  2. WATERMAIN TO BE INSTALLED BY TRENCHLESS METHODS.
  3. BACKFILL IS CLASS 5 WITHIN BOULEVARD AND CLASS 3 WHEN WITHIN PAVEMENT/SIDEWALK OR WHEN WITHIN 1.0m OF PAVEMENT OR SIDEWALK.
  4. WATER SERVICES ARE 19mm UNLESS OTHERWISE NOTED.
  5. MINIMUM COVER TO TOP OF WATERMAIN SHALL BE 2.4m.
  6. LOCATION OF ALL SERVICES TO BE CONFIRMED IN FIELD.
  7. EXPOSE EXISTING WATERMAIN TO CONFIRM DEPTH PRIOR TO CONSTRUCTION.
  8. ALL LEAD SERVICES TO BE RENEWED TO PROPERTY LINE.
  9. SERVICES TO BE RENEWED SHALL BE REPLACED FROM WATERMAIN TO PROPERTY LINE. ALL OTHERS TO BE RECONNECTED.

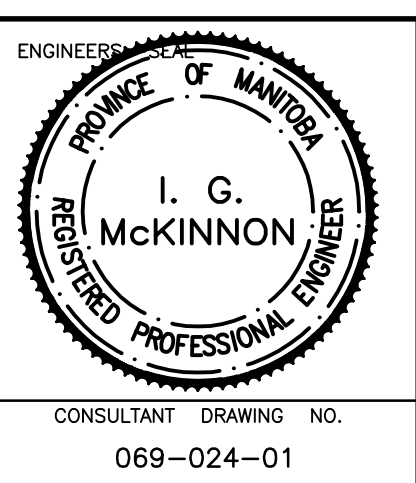
EXISTING	LEGEND - PLAN	PROPOSED	EXISTING	LEGEND - PLAN	PROPOSED	EXISTING	LEGEND - PROFILE	PROPOSED
---	WATERMAIN	---	---	REDUCER	---	---	WATERMAIN	---
+	HYDRANT	+	+	PLUG	+	+	VALVE	+
+	VALVE	+	+	TRAFFIC SIGNAL	+	+	LAND DRAINAGE SEWER	+
---	LAND DRAINAGE SEWER	---	---	GAS	---	---	WASTE WATER SEWER	---
---	WASTE WATER SEWER	---	---	HYDRO	---	---	JUNCTIONS	---
○	MANHOLE	○	○	M.T.S.	○	○	CULVERT	○
□	CATCH BASIN	□	□	SURVEY BAR	□	□		□
□	CURB INLET	□	□	CURB STOP	□	□		□
+	TEE	+	+	C.B. LEAD	+	+		+
+	BEND	+	+	TREE	+	+		+
+	ANODE	+	+	LAMP STANDARD	+	+		+

LOCATION APPROVED		B.M. 35-050 ELEV. 323.149	
SUPV. U/G STRUCTURES	DATE	DESIGNED BY	SM
COMMITTEE		CHECKED BY	IMcK
NOTE:		DRAWN BY	DJ
LOCATION OF UNDERGROUND STRUCTURES AS SHOWN ARE BASED ON THE BEST INFORMATION AVAILABLE BUT NO GUARANTEE IS GIVEN THAT ALL EXISTING UTILITIES ARE SHOWN OR THAT THE GIVEN LOCATIONS ARE EXACT. CONFIRMATION OF EXISTENCE AND EXACT LOCATION OF ALL SERVICES MUST BE OBTAINED FROM THE INDIVIDUAL UTILITIES BEFORE PROCEEDING WITH CONSTRUCTION.		HOR. SCALE:	1:250
		VERT. SCALE:	1:50
1	BID OPPORTUNITY 664-2008	DATE	AUGUST 2008
NO.	REVISIONS	DATE	BY

**GENIVAR**  
200 TACHE AVENUE WINNIPEG, MANITOBA R2H 1A7  
PH: (204)-233-2113 FAX: (204)-233-2080

DESIGNED BY: DJ  
DRAWN BY: DJ  
HOR. SCALE: 1:250  
VERT. SCALE: 1:50  
DATE: AUGUST 2008

CHECKED BY: SM  
APPROVED BY: IMcK  
RELEASED FOR CONSTRUCTION: S. COURNOYER P.ENG.  
DATE: AUGUST 20 2008



THE CITY OF WINNIPEG  
WATER AND WASTE DEPARTMENT

2008 CAPITAL WORKS  
WATERMAIN RENEWALS  
DONALD STREET  
ST. MARY AVENUE TO  
90m NORTH OF ST. MARY AVENUE

SHEET 1 OF 2  
CITY DRAWING NO.  
D-11480

CONSULTANT DRAWING NO. 069-024-01