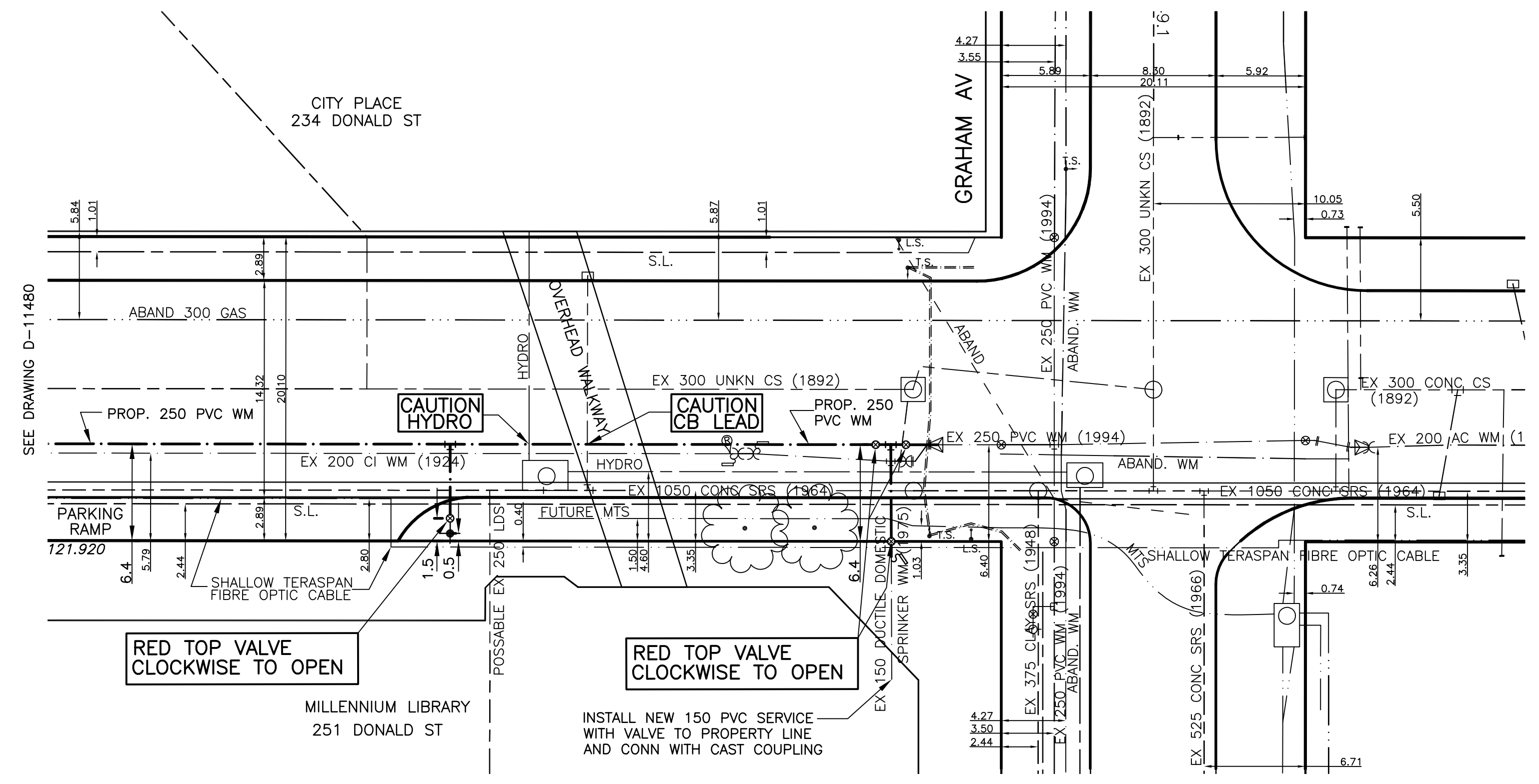
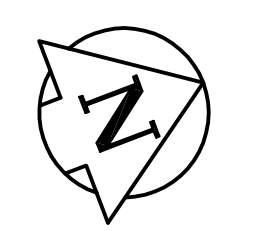


WATER SERVICE INFORMATION			
ADDRESS	SIZE(mm) & TYPE (ST.)	SIZE(mm) & TYPE (PROP.)	SHORT & LONG MEASUREMENT CORP LOCATION REMARKS
234 DONALD	150 SPRINKLER CAST IRON	23.2	EEL HARGRAVE SERVICED OFF GRAHAM
251 DONALD COMMERCIAL	150 DUCTILE	7.3	SSL GRAHAM MILLENNIUM LIBRARY
251 DONALD	200 SPRINKLER CAST IRON	2.9	EEL BLDG 1.1 WWL SMITH SERVICED OFF GRAHAM AV MILLENNIUM LIBRARY

CHAINAGE ALONG EAST PROPERTY LINE OF DONALD STREET
DONALD STREET



METRIC
WHOLE NUMBERS INDICATE MILLIMETRES
DECIMALIZED NUMBERS INDICATE METRES

- NOTES:**
- ALL GATE VALVES ARE TO BE CLOCKWISE TO OPEN WITH A RED OPERATING NUT.
 - WATERMAIN TO BE INSTALLED BY TRENCHLESS METHODS.
 - BACKFILL IS CLASS 5 WITHIN BOULEVARD AND CLASS 3 WHEN WITHIN PAVEMENT/SIDEWALK OR WHEN WITHIN 1.0m OF PAVEMENT OR SIDEWALK.
 - WATER SERVICES ARE 19mm UNLESS OTHERWISE NOTED.
 - MINIMUM COVER TO TOP OF WATERMAIN SHALL BE 2.4m.
 - LOCATION OF ALL SERVICES TO BE CONFIRMED IN FIELD.
 - EXPOSE EXISTING WATERMAIN TO CONFIRM DEPTH PRIOR TO CONSTRUCTION.
 - ALL LEAD SERVICES TO BE RENEWED TO PROPERTY LINE.
 - SERVICES TO BE RENEWED SHALL BE REPLACED FROM WATERMAIN TO PROPERTY LINE. ALL OTHERS TO BE RECONNECTED.

EXISTING	LEGEND - PLAN	PROPOSED	EXISTING	LEGEND - PLAN	PROPOSED	EXISTING	LEGEND - PROFILE	PROPOSED
---	WATERMAIN	---	---	REDUCER	---	---	WATERMAIN	---
+	HYDRANT	+	+	PLUG	+	+	VALVE	+
+	VALVE	+	+	TRAFFIC SIGNAL	+	+	LAND DRAINAGE SEWER	+
---	LAND DRAINAGE SEWER	---	---	GAS	---	---	WASTE WATER SEWER	---
---	WASTE WATER SEWER	---	---	HYDRO	---	---	JUNCTIONS	---
○	MANHOLE	○	○	M.T.S.	○	○	CULVERT	○
□	CATCH BASIN	□	□	SURVEY BAR	□	□		□
□	CURB INLET	□	□	CURB STOP	□	□		□
+	TEE	+	+	C.B. LEAD	+	+		+
+	BEND	+	+	TREE	+	+		+
+	ANODE	+	+	LAMP STANDARD	+	+		+

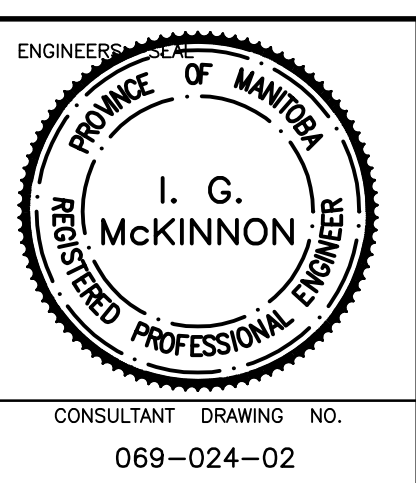
LOCATION APPROVED		DATE	
SUPV. U/G STRUCTURES COMMITTEE			
NOTE:	LOCATION OF UNDERGROUND STRUCTURES AS SHOWN ARE BASED ON THE BEST INFORMATION AVAILABLE BUT NO GUARANTEE IS GIVEN THAT ALL EXISTING UTILITIES ARE SHOWN OR THAT THE GIVEN LOCATIONS ARE EXACT. CONFIRMATION OF EXISTENCE AND EXACT LOCATION OF ALL SERVICES MUST BE OBTAINED FROM THE INDIVIDUAL UTILITIES BEFORE PROCEEDING WITH CONSTRUCTION.		

GENIVAR
200 TACHE AVENUE WINNIPEG, MANITOBA R2H 1A7
PH: (204)-233-2113 FAX: (204)-233-2080

DESIGNED BY: DJ
CHECKED BY: SM
DRAWN BY: DJ
APPROVED BY: IMcK

HOR. SCALE: 1:250
VERT. SCALE: 1:50

RELEASED FOR CONSTRUCTION
ORIGINALLY SIGNED BY
S. COURNOYER P.ENG.
DATE: AUGUST 20 2008



THE CITY OF WINNIPEG
WATER AND WASTE DEPARTMENT

2008 CAPITAL WORKS
WATERMAIN RENEWALS
DONALD STREET
90m NORTH OF ST. MARY AVENUE TO
GRAHAM AVENUE

SHEET 2 OF 2
CITY DRAWING NO.
D-11481

CONSULTANT DRAWING NO. 069-024-02