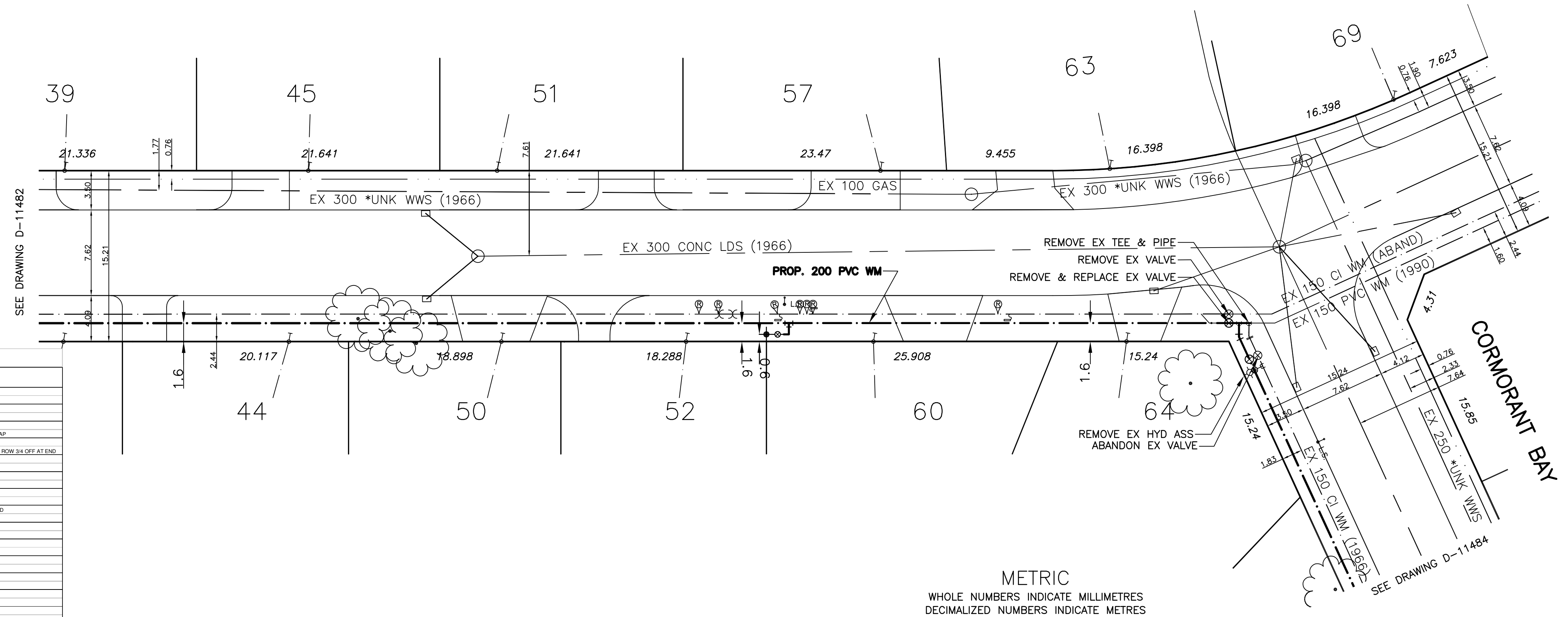
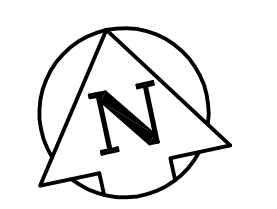


CHAINAGE ALONG SOUTH PROPERTY LINE OF EDGEWATER DRIVE
EDGEWATER DRIVE



ADDRESS & NATURE OF SERVICE	SIZE (MM) & TYPE	SHORT & LONG MEASUREMENT	CORP LOCATION	REMARKS
32 Edgewater Drive Residential	10" Copper	8.11 OF R	DRWY A3470 SEWER#9	
33 Edgewater Drive Residential	10" Copper	10.4 LR COR	DRWY A454 SEWER#9	
38 Edgewater Drive Residential	10" Copper	3.4 WEHL	OPP S/C DRWY A855 SEWER#9	
39 Edgewater Drive Residential	10" Copper	10.8 LR COR	1" M OF S/C DRWY A449 SEWER#9	MAR10 - HOOKED SERVICE BACK UP TO 815 22 ROW 3/4 OFF AT END
44 Edgewater Drive Residential	10" Copper	4.3 RL CR OF HOUSE	DRWY A854 SEWER#9	
45 Edgewater Drive Residential	10" Copper	10.6 LR COR	DRWY A449 SEWER#9	
50 Edgewater Drive Residential	10" Copper	4.4 RL CR OF HOUSE	DRWY A859 SEWER#9 E1545	
51 Edgewater Drive Residential	10" Copper	4.3 RL COR	DRWY A487 SEWER#9 N SIDE E OF LAKEWOOD	
52 Edgewater Drive Residential	10" Copper	7.1 RL CR OF HSE	DRWY A351 SEWER#9	
57 Edgewater Drive Residential	10" Copper	2.3 LR COR	DRWY C281474 A2991	
60 Edgewater Drive Residential	10" Copper	6.4 LR CR OF HSE	DRWY G4818 3455A 3747A SEWER#9	
63 Edgewater Drive Residential	10" Copper	10.1 E/WHL	SEWER#9 TAN S18-A-4 2800-06	OCT10 - VACATED SERVICE BOX
64 Edgewater Drive Residential	10" Copper	2.0 FROM GARAGE	DRWY A352 SEWER#9	
69 Edgewater Drive Residential	10" Copper	9.7 LR COR	DRWY A4873 SEWER#9	SWIMMING POOL PERMIT 29513-1982 E1659

- NOTES:**
- ALL GATE VALVES ARE COUNTER-CLOCKWISE TO OPEN WITH A BLACK OPERATING NUT.
 - WATERMAIN TO BE INSTALLED BY TRENCHLESS METHODS.
 - BACKFILL IS CLASS 5 WITHIN BOULEVARD AND CLASS 3 WHEN WITHIN PAVEMENT/SIDEWALK OR WHEN WITHIN 1.0m OF PAVEMENT OR SIDEWALK.
 - WATER SERVICES ARE 19mm UNLESS OTHERWISE NOTED.
 - MINIMUM COVER TO TOP OF WATERMAIN SHALL BE 2.4m.
 - LOCATION OF ALL SERVICES TO BE CONFIRMED IN FIELD.
 - EXPOSE EXISTING WATERMAIN TO CONFIRM DEPTH PRIOR TO CONSTRUCTION.
 - ALL LEAD SERVICES TO BE RENEWED TO PROPERTY LINE.
 - SERVICES TO BE RENEWED SHALL BE REPLACED FROM WATERMAIN TO PROPERTY LINE. ALL OTHERS TO BE RECONNECTED.



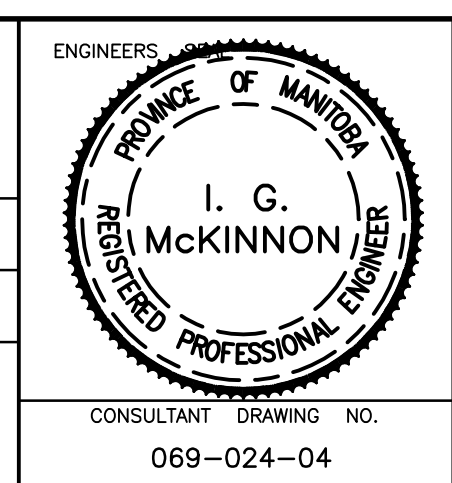
WATERMAIN	REDUCER	150mm W.M.	WATERMAIN	150mm W.M.
HYDRANT VALVE	PLUG	300mm L.D.S.	VALVE	300mm L.D.S.
LAND DRAINAGE SEWER	GAS	300mm W.W.S.	LAND DRAINAGE SEWER	300mm W.W.S.
WASTE WATER SEWER	HYDRO	250mm W.W.S.	WASTE WATER SEWER	250mm W.W.S.
MANHOLE	M.T.S.		JUNCTIONS	
CATCH BASIN	SURVEY BAR		CULVERT	
CURB INLET	CURB STOP			
TEE	C.B. LEAD			
BEND	TREE			
ANODE	LAMP STANDARD			
EXISTING	LEGEND - PLAN	PROPOSED	EXISTING	LEGEND - PROFILE

LOCATION APPROVED	B.M. 55-046	ELEV. 231.386
NO.	REVISIONS	DATE BY
1	BID OPPORTUNITY 664-2008	DATE BY

GENIVAR
200 TACHE AVENUE WINNIPEG, MANITOBA R2H 1A7
PH: (204)-233-2113 FAX: (204)-233-2080

DESIGNED BY: DJ
DRAWN BY: MBS
HOR. SCALE: 1:250
VERT. SCALE: 1:50
DATE: AUGUST 2008

CHECKED BY: SM
APPROVED BY: IMcK
RELEASED FOR CONSTRUCTION: SIGNED BY S. COURNOYER P.ENG.
DATE: AUGUST 20 2008



THE CITY OF WINNIPEG
WATER AND WASTE DEPARTMENT

2008 CAPITAL WORKS
WATERMAIN RENEWALS
EDGEWATER DRIVE
115m EAST OF LAKEWOOD BOULEVARD TO CORMORANT BAY (WEST LEG)

SHEET 2 OF 5
CITY DRAWING NO. D-11483