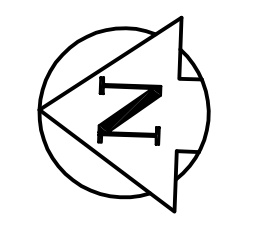
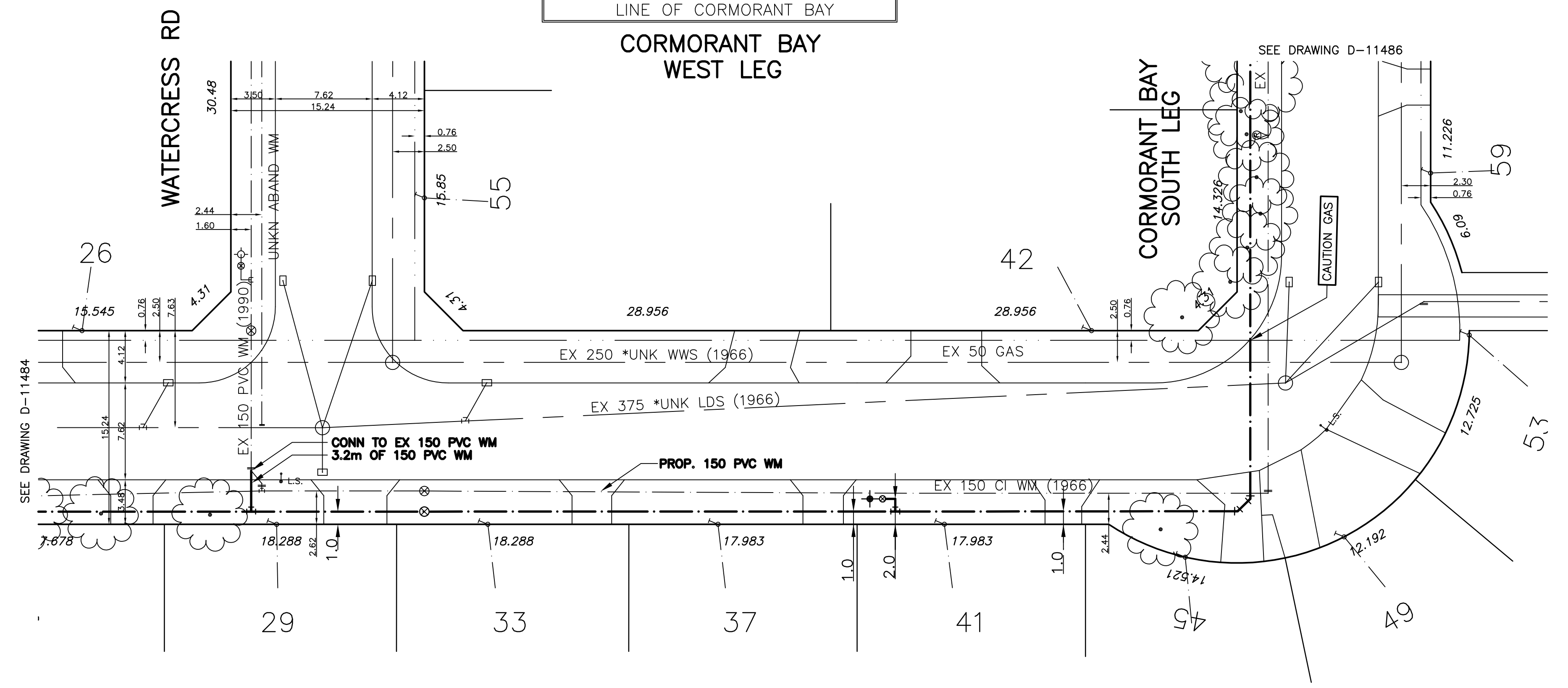


CHAINAGE ALONG WEST PROPERTY LINE OF CORMORANT BAY

CORMORANT BAY WEST LEG



**APEGM**  
Certificate of Authorization  
GENIVAR Consultants  
No. 4318 Expiry: April 30, 2009

WATERMAIN RENEWAL INFORMATION			
ADDRESS & NATURE OF SERVICE	SIZE (mm) & TYPE (Sheet)	SHORT & LONG MEASUREMENT	REMARKS
21 Cormorant Bay Residential	19 Copper	3.7 RL COR HSE	DR/WY A3559 SEWER/66
22 Cormorant Bay Residential	19 Copper	6.5 RL COR HSE	DR/WY A3549 SEWER/66
25 Cormorant Bay Residential	19 Copper	13.0 FROM L COR HSE	DR/WY A3335 SEWER/66
26 Cormorant Bay Residential	19 Copper	4.8 RL COR GARAGE	DR/WY A3542 SEWER/66
29 Cormorant Bay Residential	19 Copper	4.9 RL COR HSE	DR/WY A3224 SEWER/66
33 Cormorant Bay Residential	19 Copper	4.9 LR COR HSE	DR/WY A3464 SEWER/66
37 Cormorant Bay Residential	19 Copper	5.2 LR CR OF HSE	DR/WY A3277 SEWER/66
41 Cormorant Bay Residential	19 Copper	4.9 RL CR HSE	DR/WY A3201 SEWER/66
42 Cormorant Bay Residential	19 Copper	7.9 RL COR HSE	DR/WY A5785 CS396 SEWER/66
45 Cormorant Bay Residential	19 Copper	5.8 LR COR HSE	DR/WY A3348 SEWER/66
49 Cormorant Bay Residential	19 Copper	6.8 W FROM CURB	DR/WY A3373 SEWER/66
53 Cormorant Bay Residential	19 Copper	3.4 RL COR HSE	SEWER/66
59 Cormorant Bay Residential	19 Copper		SEWER/66
55 Watercress Road Residential	19 Copper	6.9 RL CR OF HSE	DR/WY A3238 SEWER/66

- NOTES:**
1. ALL GATE VALVES ARE COUNTER-CLOCKWISE TO OPEN WITH A BLACK OPERATING NUT.
  2. WATERMAIN TO BE INSTALLED BY TRENCHLESS METHODS.
  3. BACKFILL IS CLASS 5 WITHIN BOULEVARD AND CLASS 3 WHEN WITHIN PAVEMENT/SIDEWALK OR WHEN WITHIN 1.0m OF PAVEMENT OR SIDEWALK.
  4. WATER SERVICES ARE 19mm UNLESS OTHERWISE NOTED.
  5. MINIMUM COVER TO TOP OF WATERMAIN SHALL BE 2.4m.
  6. LOCATION OF ALL SERVICES TO BE CONFIRMED IN FIELD.
  7. EXPOSE EXISTING WATERMAIN TO CONFIRM DEPTH PRIOR TO CONSTRUCTION.
  8. ALL LEAD SERVICES TO BE RENEWED TO PROPERTY LINE.
  9. SERVICES TO BE RENEWED SHALL BE REPLACED FROM WATERMAIN TO PROPERTY LINE. ALL OTHERS TO BE RECONNECTED.

METRIC  
WHOLE NUMBERS INDICATE MILLIMETRES  
DECIMALIZED NUMBERS INDICATE METRES

EXISTING	LEGEND - PLAN	PROPOSED	EXISTING	LEGEND - PLAN	PROPOSED	EXISTING	LEGEND - PROFILE	PROPOSED
	WATERMAIN			REDUCER			150mm W.M.	
	HYDRANT			PLUG			WATERMAIN VALVE	
	VALVE			TRAFFIC SIGNAL			LAND DRAINAGE SEWER	
	LAND DRAINAGE SEWER			GAS			WASTE WATER SEWER	
	WASTE WATER SEWER			HYDRO			JUNCTIONS	
	MANHOLE			M.T.S.			CULVERT	
	CATCH BASIN			SURVEY BAR				
	CURB INLET			CURB STOP				
	TEE			C.B. LEAD				
	BEND			TREE				
	ANODE			LAMP STANDARD				

LOCATION APPROVED

SUPV. U/G STRUCTURES DATE COMMITTEE

NOTE:  
LOCATION OF UNDERGROUND STRUCTURES AS SHOWN ARE BASED ON THE BEST INFORMATION AVAILABLE BUT NO GUARANTEE IS GIVEN THAT ALL EXISTING UTILITIES ARE SHOWN OR THAT THE GIVEN LOCATIONS ARE EXACT. CONFIRMATION OF EXISTENCE AND EXACT LOCATION OF ALL SERVICES MUST BE OBTAINED FROM THE INDIVIDUAL UTILITIES BEFORE PROCEEDING WITH CONSTRUCTION.

B.M. 55-046  
ELEV. 231.386

DESIGNED BY DJ  
CHECKED BY SM

DRAWN BY MBS  
APPROVED BY IMcK

HOR. SCALE: 1:250  
VERT. SCALE: 1:50

RELEASED FOR CONSTRUCTION  
ORIGINALLY SIGNED BY S. COURNOYER P.ENG.  
DATE AUGUST 20 2008

CONSULTANT DRAWING NO. 069-024-06

**GENIVAR**  
200 TACHE AVENUE WINNIPEG, MANITOBA R2H 1A7  
PH: (204)-233-2113 FAX: (204)-233-2080

DESIGNED BY DJ  
CHECKED BY SM

DRAWN BY MBS  
APPROVED BY IMcK

HOR. SCALE: 1:250  
VERT. SCALE: 1:50

RELEASED FOR CONSTRUCTION  
ORIGINALLY SIGNED BY S. COURNOYER P.ENG.  
DATE AUGUST 20 2008

ENGINEERS  
PROVINCE OF MANITOBA  
**I. G. MCKINNON**  
REGISTERED PROFESSIONAL ENGINEER

CONSULTANT DRAWING NO. 069-024-06

THE CITY OF WINNIPEG  
WATER AND WASTE DEPARTMENT

2008 CAPITAL WORKS  
WATERMAIN RENEWALS  
**CORMORANT BAY (WEST LEG)**  
110m SOUTH OF EDGEWATER DRIVE TO  
CORMORANT BAY (SOUTH LEG)

SHEET 4 OF 5  
CITY DRAWING NO. **D-11485**