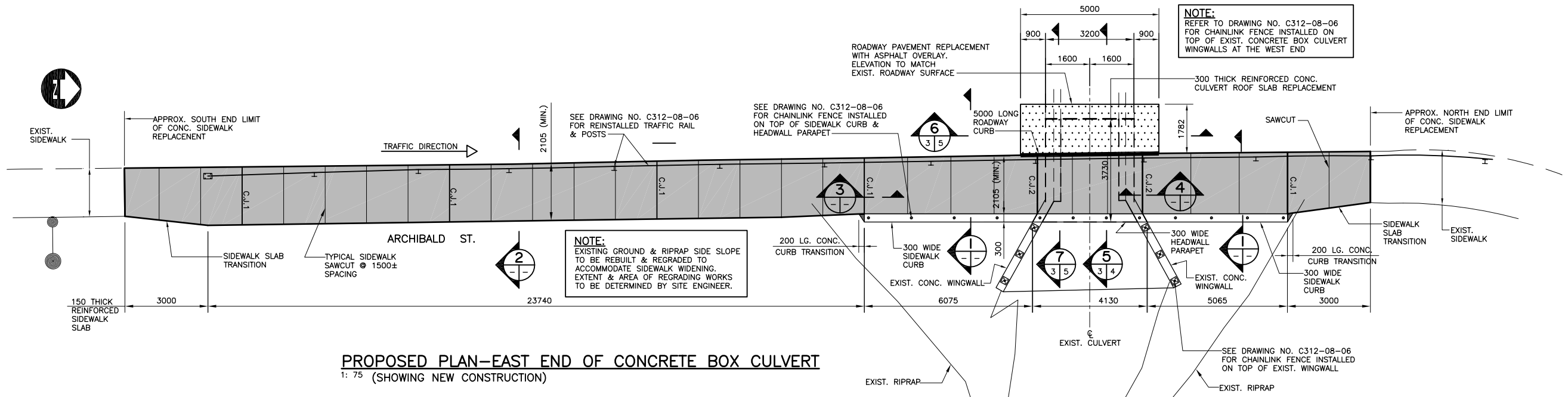
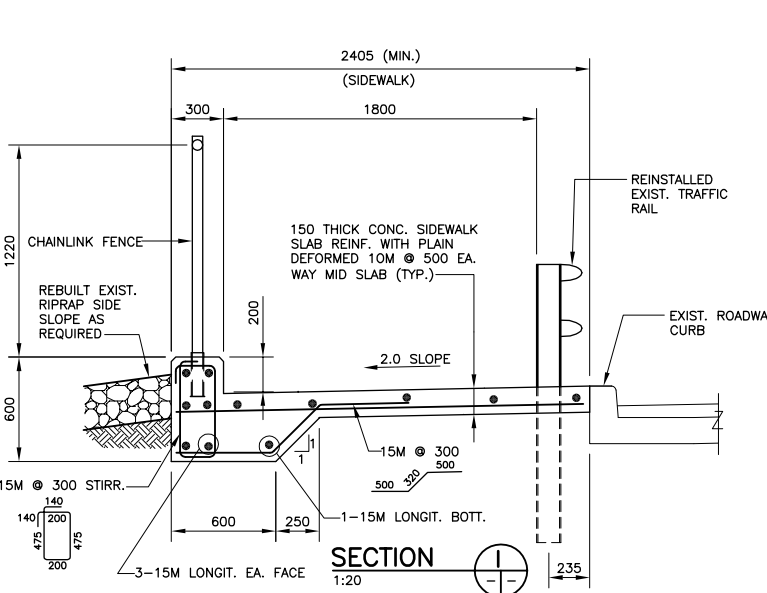


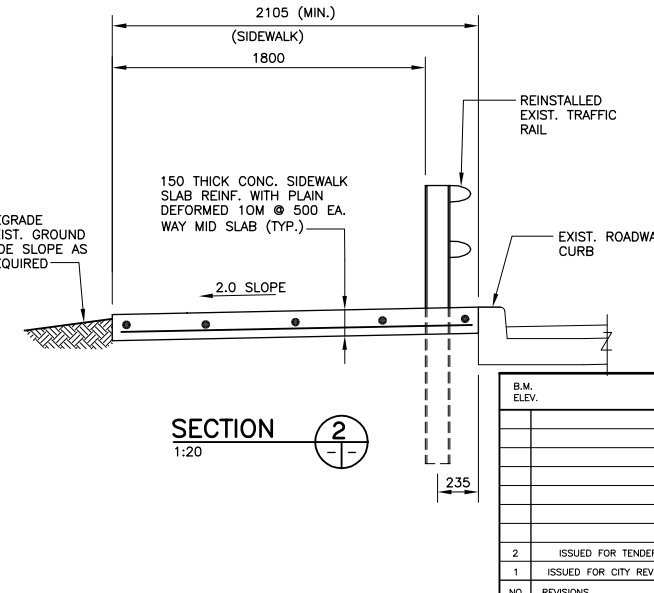
EXISTING PLAN-EAST END OF CONCRETE BOX CULVERT
1: 75 (SHOWING PROPOSED LIMIT OF WORKS & REMOVAL)



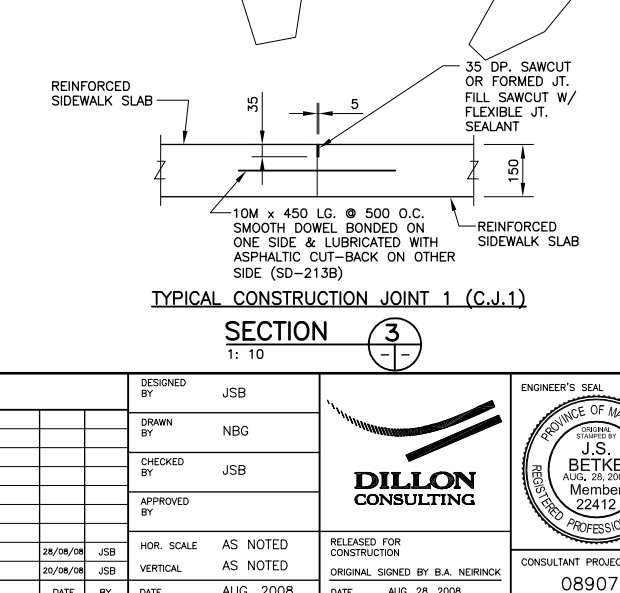
PROPOSED PLAN-EAST END OF CONCRETE BOX CULVERT
1: 75 (SHOWING NEW CONSTRUCTION)



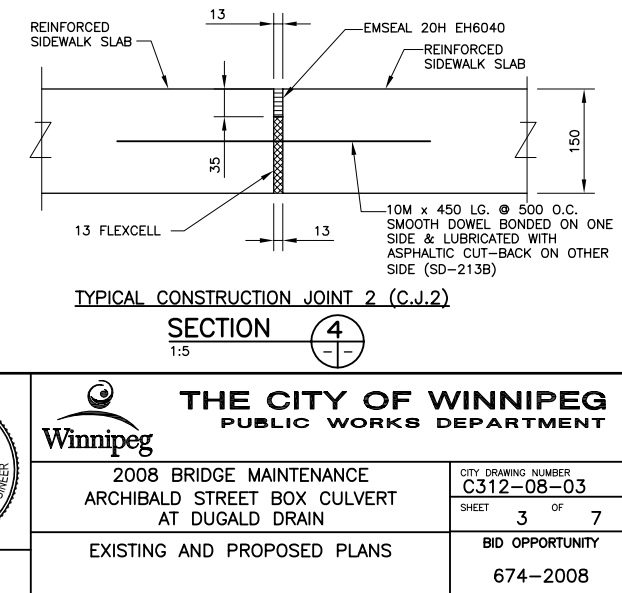
SECTION 1
1:20



SECTION 2
1:20



TYPICAL CONSTRUCTION JOINT 1 (C.J.1)
SECTION 3
1: 10



TYPICAL CONSTRUCTION JOINT 2 (C.J.2)
SECTION 4
1:5

4:00 D:\LION ACAD FILE\G:\CAD\089072\Contract\Current\3_PROPOSED.dwg 6/18/2008

B.M. ELEV.		DESIGNED BY JSB				ENGINEER'S SEAL PROVINCE OF MANITOBA ORIGINAL REGISTERED BY J.S. BETKE AUG. 28, 2008 Member 22412 REGISTERED PROFESSIONAL ENGINEER		THE CITY OF WINNIPEG PUBLIC WORKS DEPARTMENT	
1 ISSUED FOR CITY REVIEW 20/08/08 JSB		CHECKED BY JSB		APPROVED BY		HORIZONTAL SCALE AS NOTED		2008 BRIDGE MAINTENANCE ARCHIBALD STREET BOX CULVERT AT DUGALD DRAIN	
2 ISSUED FOR TENDER 28/08/08 JSB		APPROVED BY		VERTICAL SCALE AS NOTED		RELEASED FOR CONSTRUCTION ORIGINAL SIGNED BY B.A. NEIRNICK		CITY DRAWING NUMBER C312-08-03	
NO. REVISIONS		DATE BY		DATE AUG. 28, 2008		CONSULTANT PROJECT NO. 089072		SHEET 3 OF 7	
EXISTING AND PROPOSED PLANS								BID OPPORTUNITY 674-2008	