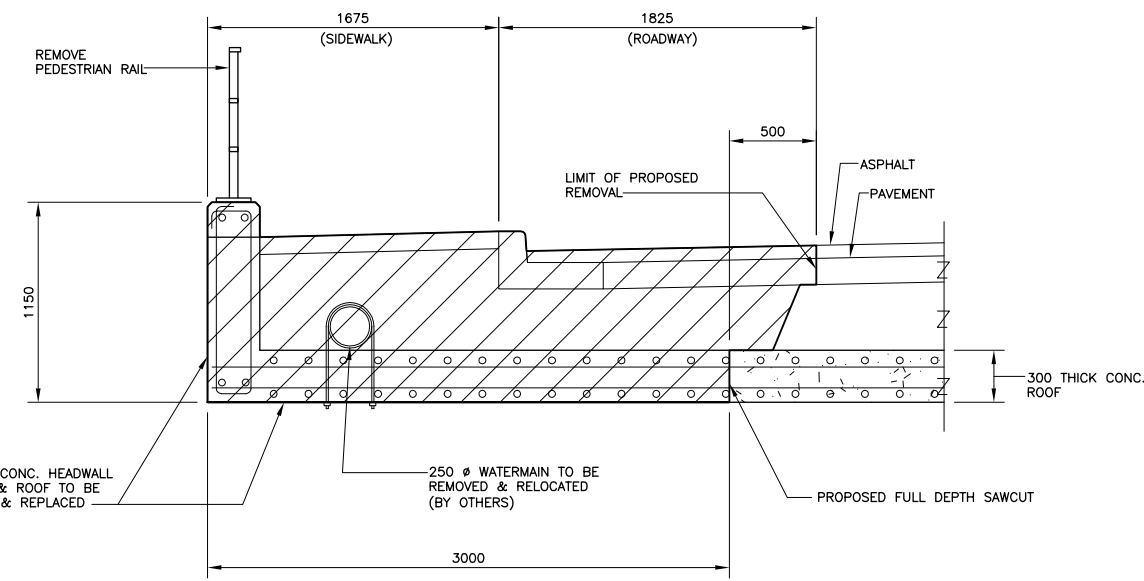
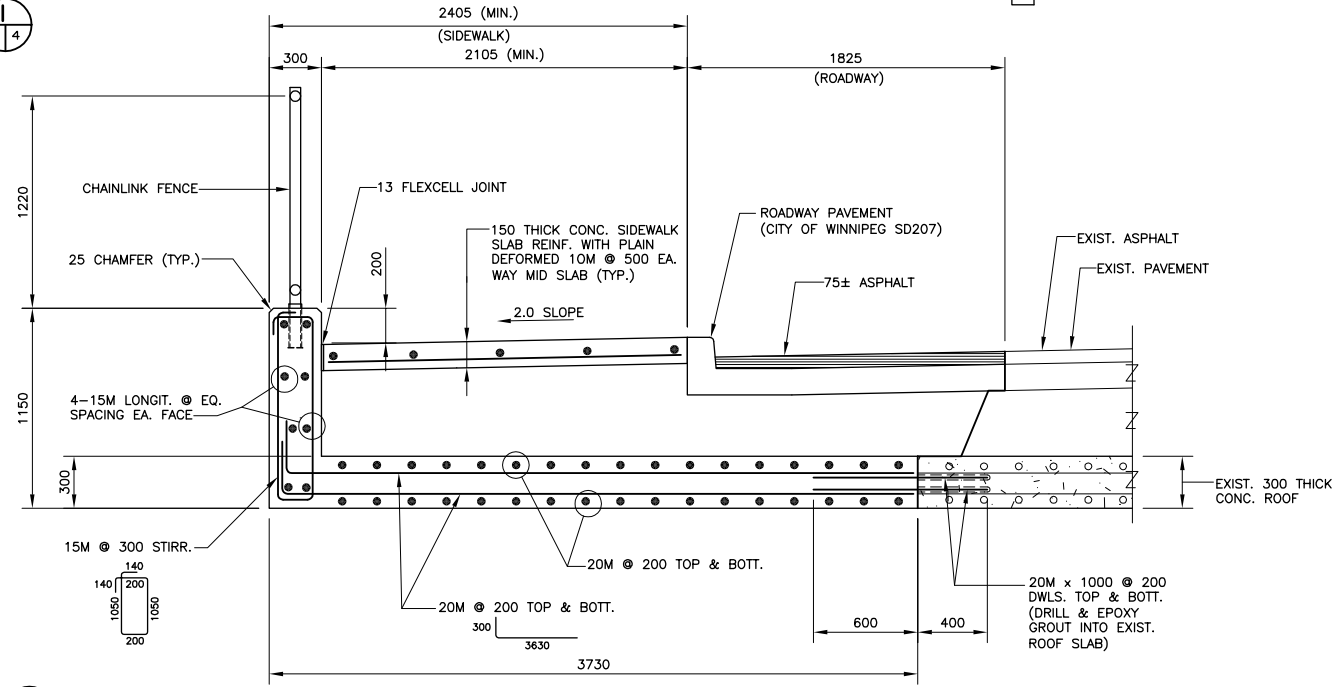


SECTION 1
i: 50



EXISTING



PROPOSED

SECTION 5
i: 20

NOTES:

1. SET UP TRAFFIC CONTROL TO CLOSE THE NORTHBOUND CURB LANE AND REDIRECT PEDESTRIAN TRAFFIC.
2. INSTALL SILT FENCE DOWNSTREAM AS SHOWN ON DRAWING NO. C312-08-02
3. SAWCUT THE ROADWAY AND SIDEWALK/CURB TO THE LIMITS SHOWN ON SHEET 3 AND REMOVE ALL ASPHALT AND CONCRETE. GRANULAR MATERIALS BETWEEN THE ROADWAY/SIDEWALK AND CULVERT ROOF SHALL BE REMOVED AND STOCKPILED ON SITE. CONTRACT ADMINISTRATOR WILL DETERMINE IF EXCAVATED MATERIAL IS SUITABLE FOR BACKFILL OR IF DISPOSAL IS REQUIRED.
4. EXISTING ABANDONED FEEDERMAIN UNDER THE SIDEWALK SHALL BE REMOVED AND DISPOSED OF.
5. FULL DEPTH SAWCUT THE CULVERT ROOF, REMOVE THE DETERIORATED CONCRETE AND RECONSTRUCT THE CULVERT ROOF AND HEADWALL AS SHOWN ON DRAWING NO. C312-08-04 AND 05.
6. HOLES FOR DOWELS SHALL BE DRILLED 2 MM LARGER THAN THE DIAMETER OF THE REINFORCING. EPOXY GROUT SHALL BE USED FOR DOWEL EMBEDMENT AS PER THE CITY OF WINNIPEG SPECIFICATIONS.
7. AFTER REMOVAL OF CONCRETE, DRILLING OF HOLES AND ROUGHENING OF THE CONCRETE SURFACES, THE CONCRETE BONDING SURFACES SHALL BE CLEANED BY GRIT BLASTING.
8. CONCRETE TO BE SUPPLIED AND PLACED IN ACCORDANCE WITH THE SPECIFICATION. ALLOW CONCRETE TO CURE FOR 7 DAYS BEFORE FORM REMOVAL.
9. PLACE AND COMPACT GRANULAR BASE COURSE UNDER THE ROADWAY AND SIDEWALK IN ACCORDANCE WITH THE SPECIFICATIONS.
10. RE-INSTALL THE TRAFFIC BARRIER POSTS AND INSTALL THE FENCE POST INSERTS AT THE LOCATIONS SHOWN ON DRAWING NO. C312-08-06 BEFORE CONSTRUCTING THE NEW CURBS AND SIDEWALK.
11. CONSTRUCT THE NEW CONCRETE CURBS, CONCRETE SIDEWALK AND ASPHALT ROADWAY TO THE LIMITS SHOWN ON THE DRAWINGS AND IN ACCORDANCE WITH THE SPECIFICATIONS.

B.M. ELEV.	DESIGNED BY	JSB
	DRAWN BY	NBG
	CHECKED BY	JSB
	APPROVED BY	
2	ISSUED FOR TENDER	28/08/08 JSB
1	ISSUED FOR CITY REVIEW	20/08/08 JSB
NO. REVISIONS	DATE	BY

HOR. SCALE	AS NOTED
VERTICAL	AS NOTED
RELEASED FOR CONSTRUCTION	
ORIGINAL SIGNED BY	B.A. NEIRINCK
DATE	AUGUST 2008

DILLON CONSULTING

PROVINCE OF MANITOBA
REGISTERED PROFESSIONAL ENGINEER
J.S. BETKE
AUG. 28, 2008
Member 22412

CONSULTANT PROJECT NO.
089072

THE CITY OF WINNIPEG
PUBLIC WORKS DEPARTMENT

2008 BRIDGE MAINTENANCE
ARCHIBALD STREET BOX CULVERT
AT DUGALD DRAIN

CITY DRAWING NUMBER
C312-08-04
SHEET 4 OF 7

BID OPPORTUNITY
674-2008

4: DILLON Acad. FILE: G:\CAD\989072\Contract\Current\4_T0_6_DETAIL.dwg 6/18/2008