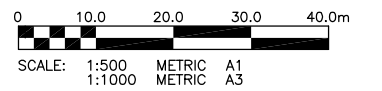
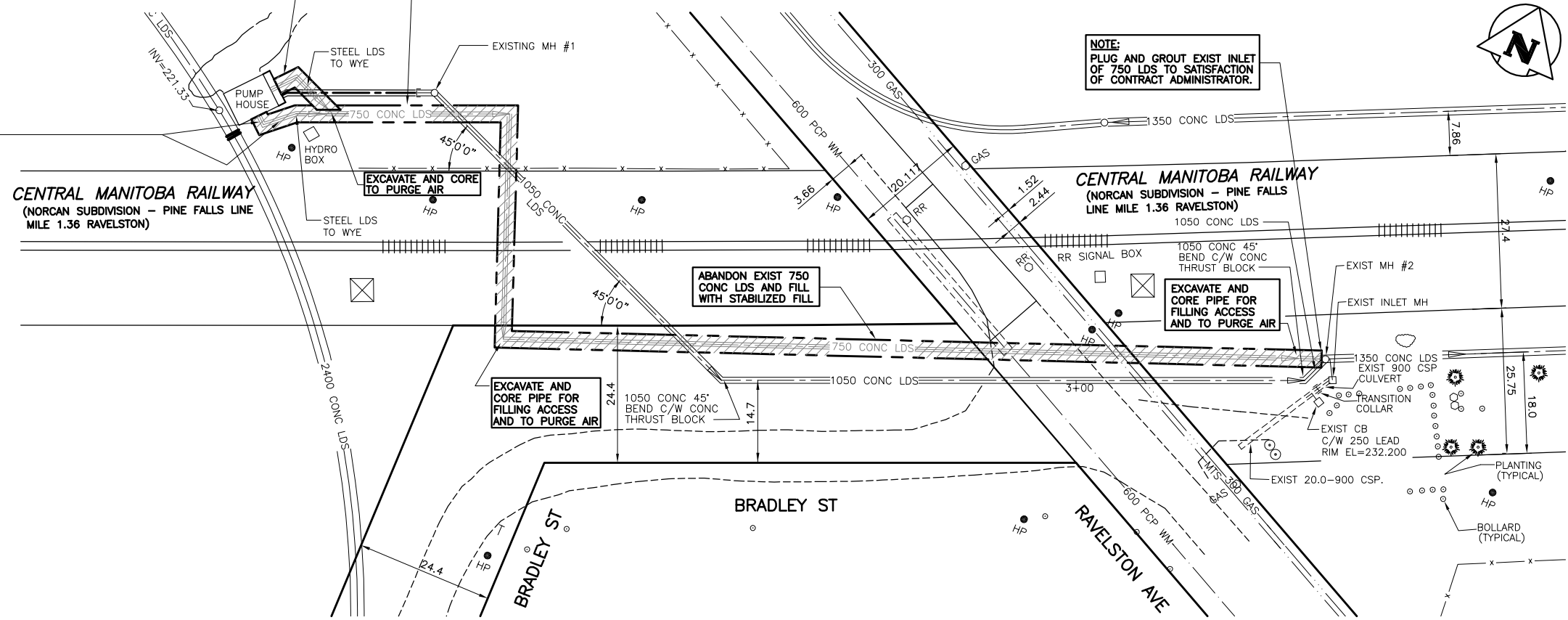


**NOTE:**  
 1. REMOVE EXIST STEEL LDS FROM PUMPHOUSE TO WYE CONNECTION.  
 2. PLUG AND GROUT WYE TO SATISFACTION OF CONTRACT ADMINISTRATOR.

**NOTE:**  
 1. ABANDON EXIST 750 CONC LDS WITH STABILIZED FILL.

**NOTE:**  
 1. REMOVE EXIST STEEL LDS FROM PUMPHOUSE WALL (SEE DWG LD-5076).  
 2. PLUG AND ABANDON REMAINING STEEL LDS FROM PUMPHOUSE TO WYE WITH STABILIZED FILL.

**NOTE:**  
 PLUG AND GROUT EXIST INLET OF 750 LDS TO SATISFACTION OF CONTRACT ADMINISTRATOR.



**PLAN**  
 SCALE: 1:500

**NOTE:**  
 1. EXISTING LDS IS SLOPED TOWARDS THE PUMPHOUSE AND THEREFORE WILL BE PARTIALLY FULL OF WATER.  
 2. LDS MUST BE DRAINED INTO THE WETWELL BY OPENING DRAIN VALVES ON PUMPHOUSE PIPING (COORDINATE WITH MECHANICAL).  
 3. ABANDONED 750 CONC LDS TO BE CORED AS INDICATED ON PLANS FOR FILLING ACCESS AND TO ENSURE THAT NO AIR POCKETS ARE FORMED DURING THE STABILIZED FILL PROCEDURE.  
 4. ABANDONED 750 CONC LDS TO BE FILLED WITH STABILIZED FILL STARTING FROM 90 DEGREE BEND AND THEN PROCEEDING TO MANHOLE #2.  
 5. FLOWABLE CEMENT-STABILIZED FILL IS TO BE IN ACCORDANCE WITH CW2030 AND TABLE CW2160.1 OF CW2160.

**PROPERTY LIMITS DELINEATION**  
 DELINEATION OF PROPERTY LIMITS AS SHOWN ON THIS DWG DOES NOT REPRESENT A "LEGAL SURVEY". KGS GROUP MAKES NO REPRESENTATION OR WARRANTY AS TO THE ACCURACY OF PROPERTY LIMITS DELINEATED ON THIS DWG, NOR ON THE DIMENSIONAL ACCURACY OF DWG FEATURES RELATIVE TO THOSE PROPERTY LIMITS.

**WARNING**  
 1. NOTIFY THE GAS COMPANY OF THE PROPOSED LOCATION OF EXCAVATION.  
 2. TAKE PRECAUTION TO AVOID DAMAGE TO GAS COMPANY INSTALLATIONS.  
 3. SEE PROVINCIAL REGULATION 210/72 FOR DETAILS.

**METRIC**  
 WHOLE NUMBERS INDICATE MILLIMETRES  
 DECIMALIZED NUMBERS INDICATE METRES



150 WM	WATERMAIN	150 WM	HYDRO	150 WM	WATERMAIN	150 WM
300 LDS	LAND DRAINAGE SEWER	300 LDS	M.T.S.	300 LDS	HYDRANT, VALVE	300 LDS
250 WWS	WASTE WATER SEWER	250 WWS	CONCRETE	250 WWS	WASTE WATER SEWER	250 WWS
	MANHOLE		ASPHALT		LAND DRAINAGE SEWER	
	CATCH BASIN		SIDEWALK		WASTE WATER SEWER	
	CURB INLET		PLANNING		LAND DRAINAGE SEWER	
	JUNCTIONS		PROPERTY LINE		LAND DRAINAGE SEWER	
	CULVERT		SURVEY BAR		LAND DRAINAGE SEWER	
	GAS		DITCH		LAND DRAINAGE SEWER	
EXISTING	LEGEND-PLAN	PROPOSED	ELEVATION	EXISTING	LEGEND-PROFILE	PROPOSED

**LOCATION APPROVED UNDERGROUND STRUCTURES**  
 SUPV. U/G STRUCTURES COMMITTEE DATE  
 NOTE:  
 LOCATION OF UNDERGROUND STRUCTURES AS SHOWN ARE BASED ON THE BEST INFORMATION AVAILABLE BUT NO GUARANTEE IS GIVEN THAT ALL EXISTING UTILITIES ARE SHOWN OR THAT THE GIVEN LOCATIONS ARE EXACT. CONFIRMATION OF EXISTENCE AND EXACT LOCATION OF ALL SERVICES MUST BE OBTAINED FROM THE INDIVIDUAL UTILITIES BEFORE PROCEEDING WITH CONSTRUCTION.

B.M. ELEV.			
NO.	ISSUED FOR CONSTRUCTION	23/09/08	SH
	REVISIONS	DATE	BY

**KGS CONSULTING ENGINEERS & PROJECT MANAGERS GROUP**  
 WINNIPEG (204) 896-1209  
 THUNDER BAY (807) 345-2233

DESIGNED BY SH	CHECKED BY SH
DRAWN BY DW	APPROVED BY
HOR. SCALE: 1:50	RELEASED FOR CONSTRUCTION:
VERTICAL: 1:50	DATE

ENGINEER'S SEAL  
 ORIGINAL SIGNED BY  
 S.E. HARNISH  
 23/09/08  
 CONSULTANT DRAWING NO.  
 08-0107-03-C1

**THE CITY OF WINNIPEG WATER AND WASTE DEPARTMENT**

PROJECT TITLE  
**RAVELSTON LAND DRAINAGE PUMPING STATION UPGRADE ABANDON EXISTING 750 LDS**

SHEET OF  
**01 02**

COMPUTER FILE NAME  
 BASE-PLOT.DWG

CITY DRAWING NUMBER  
**LD-5074**