



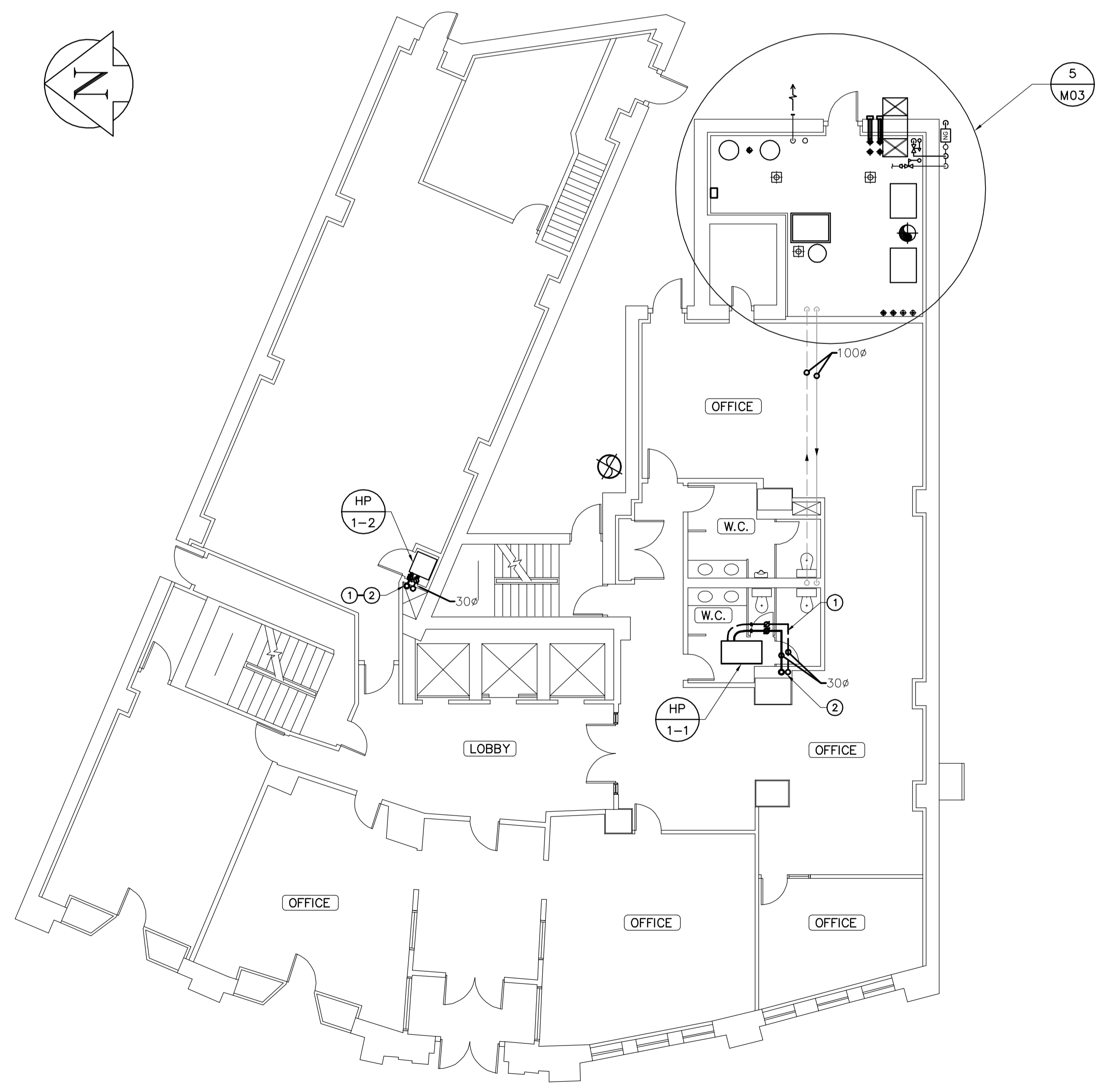
1 COMBUSTION AIR INTAKE
 M03 NTS



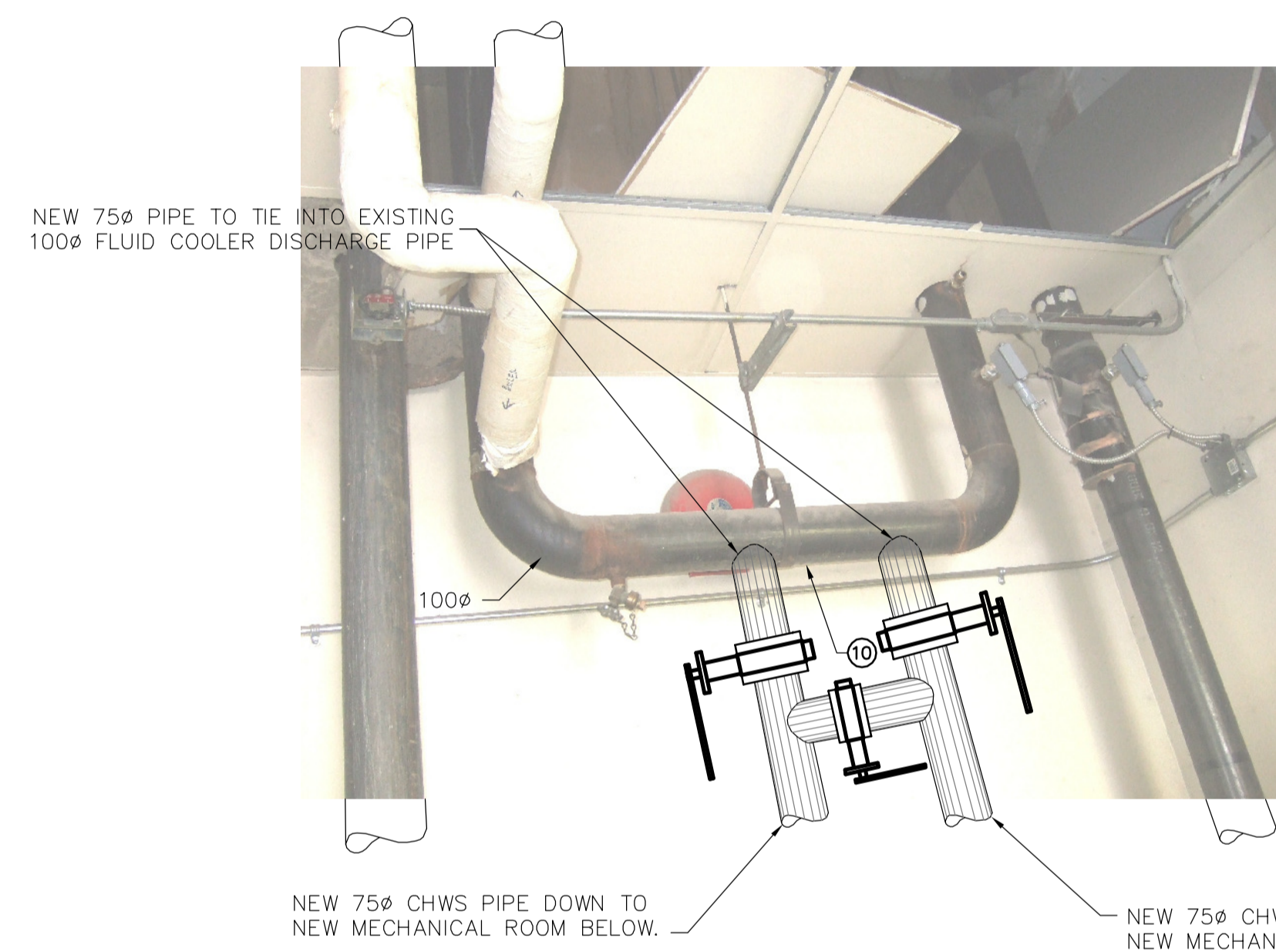
2 EXISTING MECHANICAL ROOM
 M03 NTS



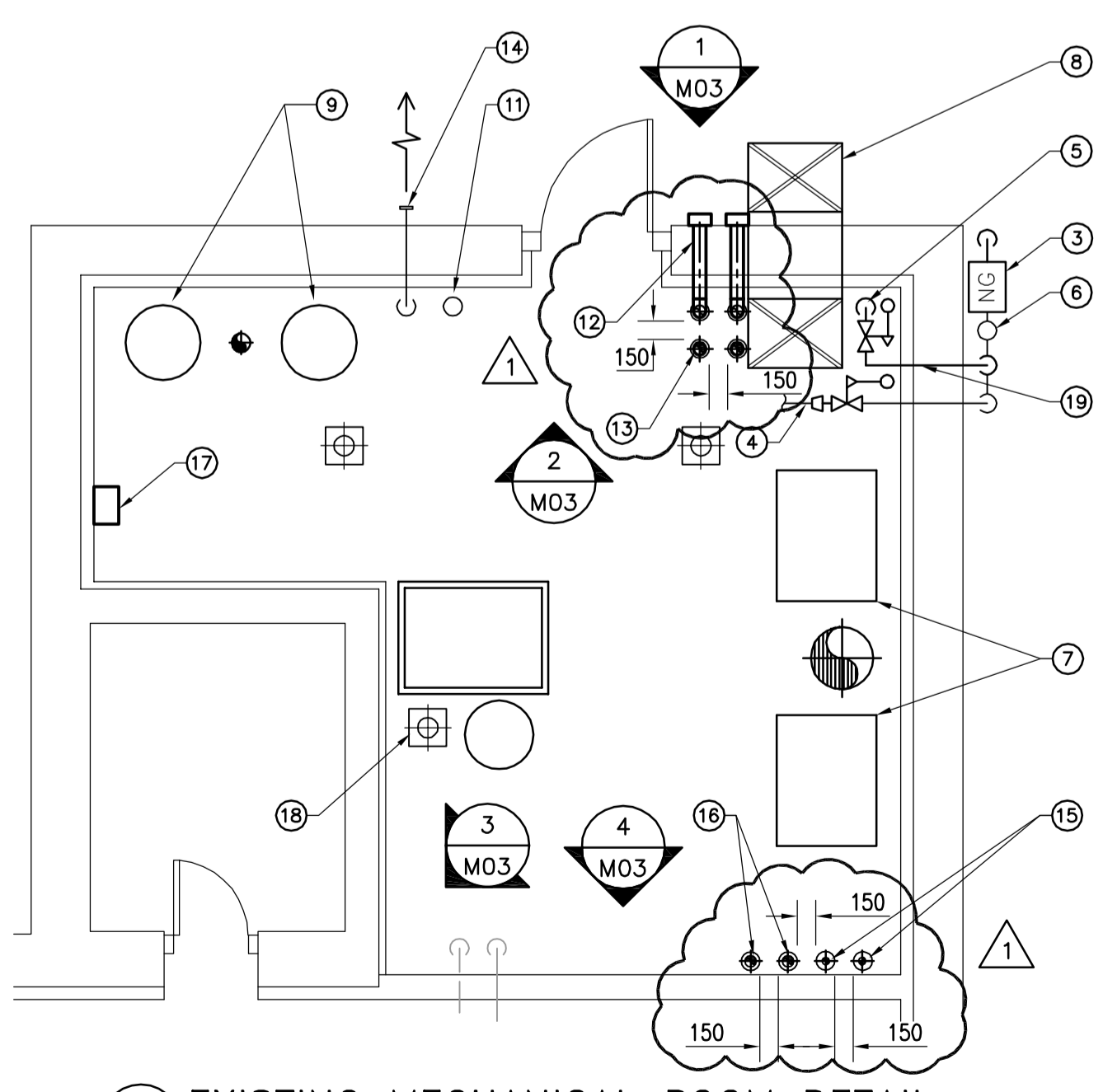
3 CHECK VALVE REPLACEMENT
 M03 NTS



MAIN FLOOR -MECHANICAL PLAN
 SCALE: 1:100



4 FLUID COOLER PIPE TIE-IN
 M03 NTS



5 EXISTING MECHANICAL ROOM DETAIL
 M03 1:50

GENERAL NOTES

- COORDINATE WITH OTHER TRADES SO AS TO PREVENT CONFLICTS.
- ALLOW 150mm CLEARANCE BETWEEN CORED OPENINGS THROUGH CONCRETE FLOORING.
- GENERAL CONTRACTOR SHALL COORDINATE WITH MECHANICAL CONTRACTOR ON FINAL HOUSEKEEPING PAD DIMENSIONS. PADS TO EXTEND 150mm BEYOND FINAL EQUIPMENT DIMENSIONS.



APEGM
 Certificate of Authorization
 Earth Tech Canada Inc.
 No. 730 Expiry: April 30, 2009

- NOTES :
- CONSTRUCTION NOTES**
- CAP EXISTING HYDRONIC SUPPLY AND RETURN BRANCHES PREVIOUSLY SERVING HEAT PUMPS. CONNECT NEW HWS AND HWR BRANCHES TO HEAT PUMP c/w NEW FLEXIBLE PIPE CONNECTIONS AND BALANCING VALVES.
 - NEW HWS AND HWR BRANCHES RISING FROM BASEMENT BELOW TO HEAT PUMP. SIZE AS SHOWN.
 - NEW GAS METER (5 PSIG) AT GROUND LEVEL. CONNECT NEW & EXISTING GAS PIPING TO NEW METER.
 - EXISTING GAS SERVICE TO EXISTING APPLIANCES IN MECHANICAL ROOM c/w NEW PRESSURE REDUCING STATION. VENT PIPE UP THROUGH ROOF c/w PITCH POCKET.
 - 50ø NEW GAS BRANCH DOWN TO NEW BOILERS IN MECHANICAL ROOM BELOW c/w PRESSURE REDUCING STATION. VENT PIPE UP THROUGH ROOF c/w PITCH POCKET.
 - EXISTING GAS BRANCH RISING TO EXISTING MAKE-UP AIR UNIT ON MECHANICAL ROOM ROOF.
 - EXISTING BOILERS TO REMAIN.
 - EXISTING COMBUSTION AIR DUCT TO REMAIN.
 - EXISTING HOT WATER HEATERS TO REMAIN.
 - NEW CHWS & CHWR PIPE TO BE WITHIN 500mm APART.
 - 50ø SANITARY VENT FROM BASEMENT TO GO THROUGH ROOF OF EXISTING MECHANICAL ROOM.
 - INSULATED 100ø COMBUSTION AIR INTAKE.
 - 100ø FLUE VENT RISING THROUGH ROOF.
 - EXISTING VENT AT LOW LEVEL.
 - NEW 50ø GWS & GWR PIPE RISING THROUGH MECHANICAL ROOM TO HEATING/COOLING IN EXISTING MAKE-UP AIR UNIT ON ROOF. SEE DWG. M04.
 - NEW 75ø CHWS & CHWR SERVING EXISTING FLUID COOLER. SEE DETAIL 4/M03 FOR TIE-IN CONNECTION LOCATION.
 - NEW 7.5 HP VFD MOUNTED ON WALL SERVING EXISTING MAKE-UP AIR UNIT ON ROOF.
 - SEAL FLOOR AROUND EXISTING FLOOR DRAIN.
 - COORDINATE GAS PIPE ROUTING WITH ELECTRICAL PANEL.

1	ISSUED FOR ADDENDUM NO. 1	DL	2008.12.05
0	ISSUED FOR TENDER	DL	2008.11.26
NO.	REVISION/DESCRIPTION	BY	DATE

EARTH TECH | AECOM

DRAWN BY: DL
 CHECKED BY: PVL
 APPROVED: PVL
 DATE: 2008.08.31
 USER APPROVAL

CITY OF WINNIPEG
 PLANNING, PROPERTY AND
 DEVELOPMENT DEPARTMENT
 CIVIC ACCOMMODATIONS DIVISION
 300 - 65 GARRY ST. R3C 4K4

PROJECT
 CONFEDERATION BUILDING
 SUPPLEMENTARY HEATING UPGRADES
 PHASE 1 - CITY BID OPP. NO. 757-2008
 457 MAIN STREET, WINNIPEG, MANITOBA

SHEET TITLE
 MAIN FLOOR
 MECHANICAL LAYOUT AND DETAILS

SCALE	PROJECT NO.	SHEET NO.
AS SHOWN	105111	M03

DRAWING SHEET SIZE: A1 (841mm x 594mm) PLOT 1:1

© 2008 EARTH TECH (CANADA) INC. ALL RIGHTS RESERVED.
 THIS DOCUMENT IS PROTECTED BY COPYRIGHT LAW AND MAY NOT BE USED, REPRODUCED OR MODIFIED IN ANY MANNER OR FOR ANY PURPOSE EXCEPT WITH THE WRITTEN PERMISSION OF EARTH TECH (CANADA) INC. DOING BUSINESS AS AECOM (AECOM) OR A PARTY TO WHICH ITS COPYRIGHT HAS BEEN ASSIGNED. AECOM ACCEPTS NO RESPONSIBILITY, AND DENIES ANY LIABILITY WHATSOEVER, TO ANY PARTY THAT USES, REPRODUCES, MODIFIES, OR RELIES ON THIS DOCUMENT WITHOUT AECOM'S EXPRESS WRITTEN CONSENT.