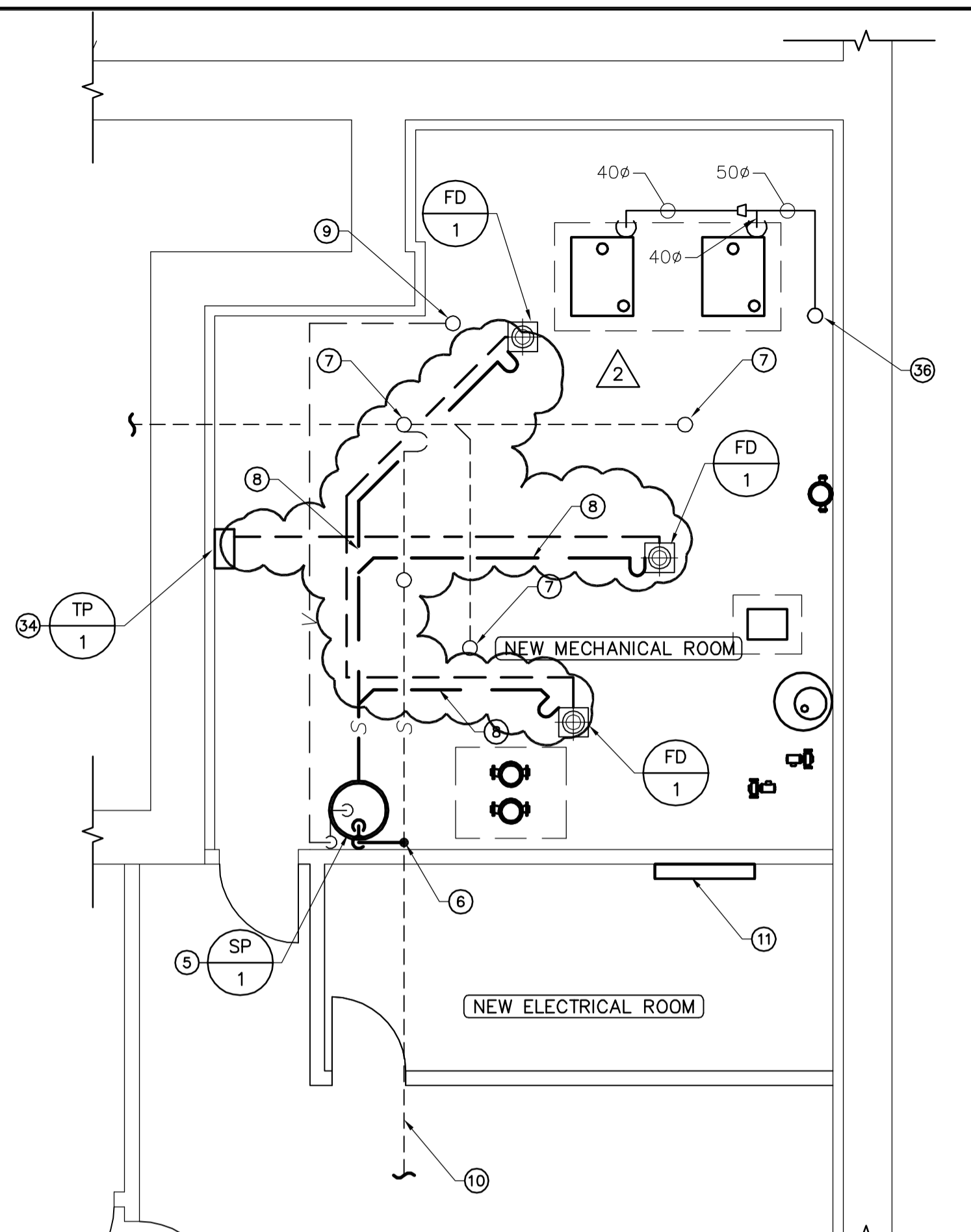
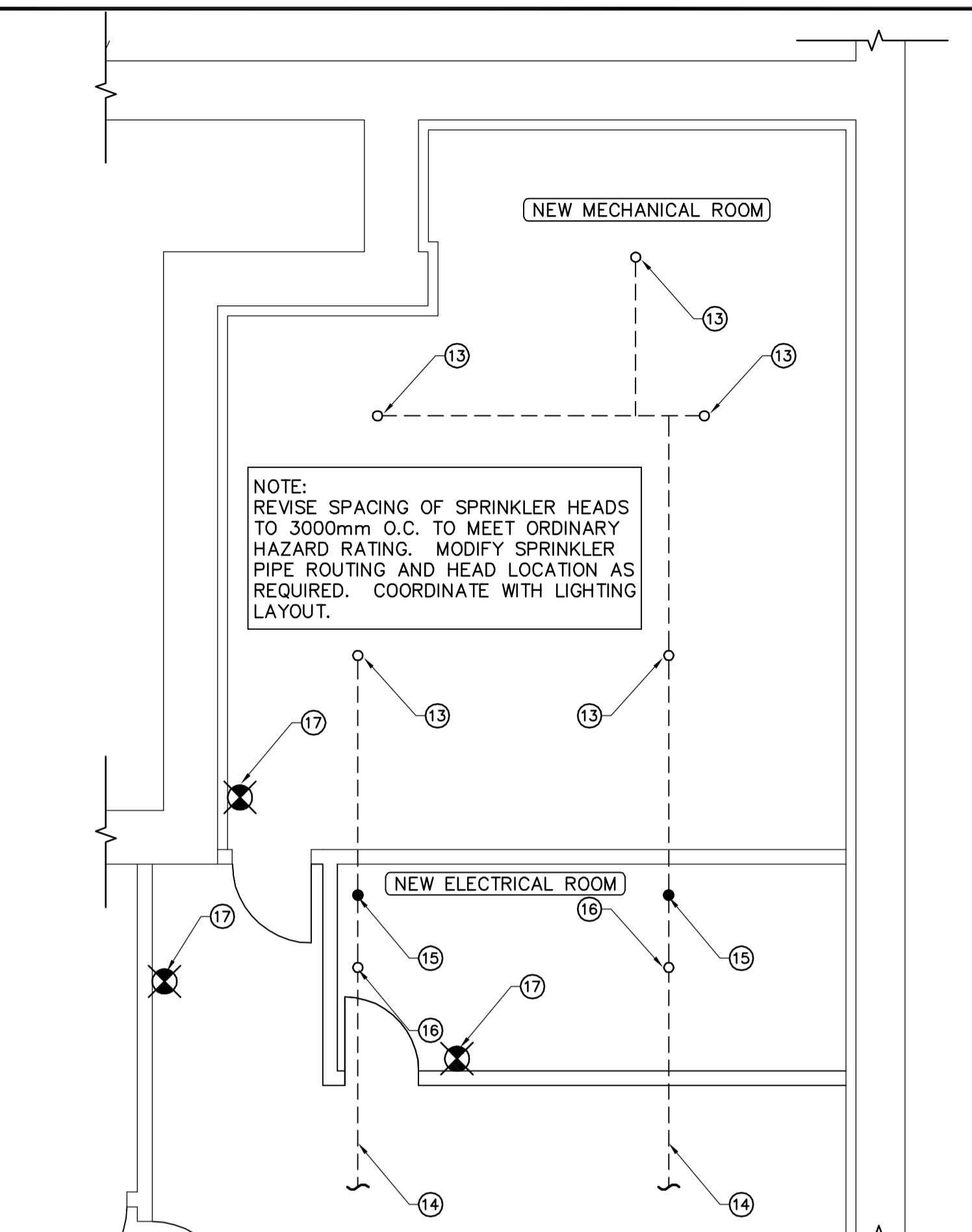


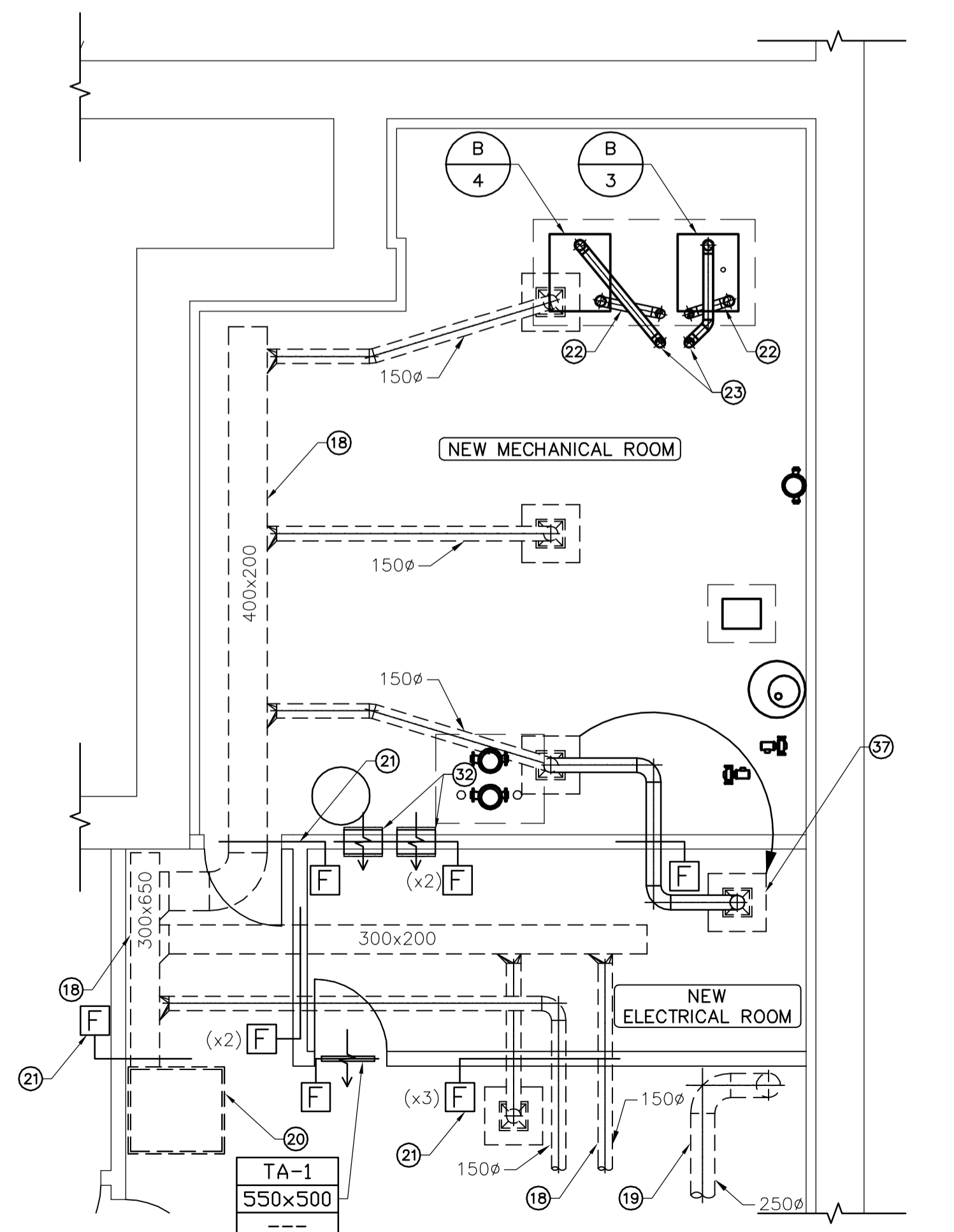
1 MECHANICAL/ELECTRICAL ROOM - RENOVATION PLAN
 M05 SCALE 1:50



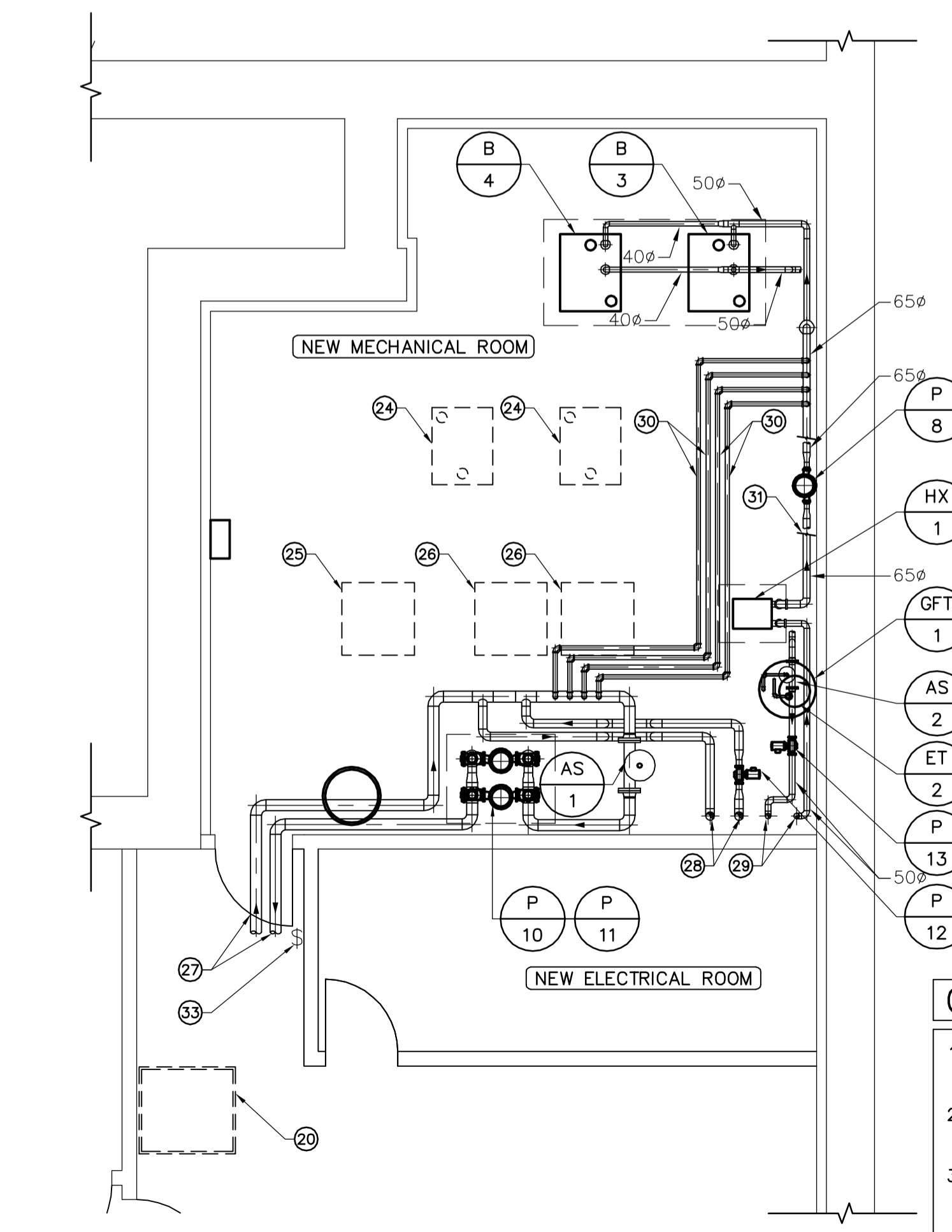
2 MECHANICAL/ELECTRICAL ROOM - PLUMBING PLAN
 M05 SCALE 1:50



3 MECHANICAL/ELECTRICAL ROOM - FIRE PROTECTION PLAN
 M05 SCALE 1:50



4 MECHANICAL/ELECTRICAL ROOM - VENTILATION PLAN
 M05 SCALE 1:50



5 MECHANICAL/ELECTRICAL ROOM - HYDRONIC PLAN
 M05 SCALE 1:50

GENERAL NOTES

- COORDINATE WITH OTHER TRADES SO AS TO PREVENT CONFLICTS.
- REFER TO ARCHITECTURAL FOR HOUSEKEEPING PAD LOCATIONS.
- COORDINATE FINAL FLOOR DRAIN LOCATIONS WITH HOUSEKEEPING PAD LOCATIONS.
- GENERAL CONTRACTOR SHALL COORDINATE WITH MECHANICAL CONTRACTOR ON FINAL HOUSEKEEPING PAD DIMENSIONS. PADS TO EXTEND 150mm BEYOND FINAL EQUIPMENT DIMENSIONS.

CONSTRUCTION NOTES (CONT.)

- FUTURE WATER SOURCE HEAT PUMP LOCATION.
- 100Ø HWS & HWR MAINS SERVING BUILDING HEAT PUMP ON BASEMENT AND MAIN FLOOR LEVELS. RUN AT HIGH LEVEL.
- 75Ø CHWS & CHWR MAINS RISING THROUGH EXISTING MAIN FLOOR MECHANICAL ROOM ABOVE TO SERVE EXISTING FLUID COOLER.
- 50Ø GWS & GWR MAINS RISING THROUGH EXISTING MAIN FLOOR MECHANICAL ROOM ABOVE TO SERVE HEATING/COOLING COIL IN EXISTING MAKE-UP AIR UNIT.
- 30Ø HWS & HWR LINES RUNNING AT HIGH LEVEL. SEE HYDRONIC SCHEMATIC ON DWG. M06.
- LINES BROKEN FOR CLARITY. SEE HYDRONIC SCHEMATIC ON DWG. M06.
- 400x250 TRANSFER AIR DUCT AT HIGH LEVEL c/w 25mm METAL MESH ON OPENINGS AND FIRE DAMPER IN WALL. TYPICAL OF 2.
- LOCATE EMERGENCY BOILER DISCONNECT SWITCH AT MECHANICAL ROOM ENTRANCE.
- PROVIDE 15Ø DCW DOWN FROM MECHANICAL ROOM ABOVE. RUN THREE-15Ø COPPER COLD WATER PIPING BELOW GRADE THROUGH 75Ø SLEEVE. RUN PIPING IN SAME TRENCH AS SANITARY LINES. SEE DETAIL 6/M08.
- OPEN NUMBER.
- 50Ø NG DOWN FROM MECHANICAL ROOM.
- RELOCATE EXISTING DIFFUSER AND EXTEND DUCTWORK c/w NEW FIRE DAMPER. COORDINATE WITH LIGHTING AND HYDRONIC LAYOUTS.

AECOM

PROVINCE OF MANITOBA
 P.V. LAITINEN
 Member
 25577
 REGISTERED PROFESSIONAL ENGINEER

APEGM
 Certificate of Authorization
 Earth Tech Canada Inc.
 No. 730 Expiry: April 30, 2009

© 2008 EARTH TECH (CANADA) INC. ALL RIGHTS RESERVED. THIS DOCUMENT IS PROTECTED BY COPYRIGHT LAW AND MAY NOT BE REPRODUCED OR MODIFIED IN ANY MANNER OR FOR ANY PURPOSE EXCEPT WITH THE WRITTEN PERMISSION OF EARTH TECH (CANADA) INC. DOING BUSINESS AS AECOM (AECOM) OR A PARTY TO WHICH ITS COPYRIGHT HAS BEEN ASSIGNED. AECOM ACCEPTS NO RESPONSIBILITY, AND DENIES ANY LIABILITY WHATSOEVER, TO ANY PARTY THAT USES, REPRODUCES, MODIFIES, OR RELIES ON THIS DOCUMENT WITHOUT AECOM'S EXPRESS WRITTEN CONSENT.

CONSTRUCTION NOTES

- 200mm HIGH WOOD PODIUM TO BE REMOVED.
- 600mm DEEP CABINET TO BE REMOVED.
- NEW FULL HEIGHT WALL (1 HR FIRE RATING).
- NEW 800mm WIDE FIRE-RATED DOOR.
- SEE DETAIL FOR SEWAGE PUMP PACKAGE.
- 50Ø SANITARY DISCHARGE RISING TO HIGH LEVEL. CONNECT INTO NEAREST ADEQUATELY SIZED SANITARY BRANCH.
- DOWN FROM EXISTING FLOOR DRAIN SERVING MECHANICAL ROOM ABOVE.
- 75Ø SANITARY SLOPING TO SEWAGE PUMP INLET.
- 50Ø VENT RISING TO MECHANICAL ROOM ABOVE. SEE DRAWING M-2 FOR CONTINUATION.
- EXISTING SANITARY BRANCH RUNNING AT HIGH LEVEL.
- BMS PANEL.
- EXISTING T-BAR CEILING TO BE REMOVED.
- EXISTING PENDANT-TYPE HEADS TO BE REPLACED WITH NEW UPRIGHT SPRINKLER HEADS. MODIFY PIPE CONNECTION TO SUIT.
- EXISTING SPRINKLER BRANCH RUNNING AT HIGH LEVEL.
- EXISTING PENDANT-TYPE HEAD TO BE REMOVED AND CAPPED.
- INSTALL NEW UPRIGHT SPRINKLER HEADS. MODIFY PIPE CONNECTION TO SUIT.
- NEW 10lb FIRE EXTINGUISHER c/w WALL BRACKET.
- EXISTING SUPPLY AIR DUCTWORK RUNNING AT HIGH LEVEL. SIZES AS SHOWN.
- EXISTING EXHAUST AIR DUCTWORK RUNNING AT HIGH LEVEL. SIZE AS SHOWN. MODIFY ROUTING TO SUIT LOCATION OF NEW WALL.
- EXISTING HEAT PUMP AT HIGH LEVEL.
- INSTALL FIRE DAMPERS IN DUCTWORK AT NEW FIRE-RATED WALLS. SEE DETAIL 4/M08.
- 100Ø FRESH AIR INLET DOWN FROM MAIN FLOOR MECHANICAL ROOM.
- 100Ø EXHAUST AIR DISCHARGE UP TO MAIN FLOOR MECHANICAL ROOM.
- FUTURE BOILER LOCATION.
- FUTURE WATER-TO-AIR HEAT PUMP LOCATION.

NO.	REVISION/DESCRIPTION	DATE
2	ISSUED FOR ADDENDUM NO. 2	2008.12.12
1	ISSUED FOR ADDENDUM NO. 1	2008.12.05
0	ISSUED FOR TENDER	2008.11.26

EARTH TECH | AECOM

DRAWN BY: DL
 CHECKED BY: PVL
 APPROVED: PVL
 DATE: 2008.08.31
 USER APPROVAL

Winnipeg CITY OF WINNIPEG
 PLANNING, PROPERTY AND
 DEVELOPMENT DEPARTMENT
 CIVIC ACCOMMODATIONS DIVISION
 300 - 65 GARRY ST. R3C 4K4

PROJECT
 CONFEDERATION BUILDING
 SUPPLEMENTARY HEATING UPGRADES
 PHASE 1 - CITY BID OPP. NO. 757-2008
 457 MAIN STREET, WINNIPEG, MANITOBA

SHEET TITLE
 BASEMENT
 MECHANICAL/ELECTRICAL ROOM LAYOUTS

SCALE: AS SHOWN
 PROJECT NO.: 105111
 SHEET NO.: M05