

FILE NAME: 757-2008-A03-R1  
 DATE: 2008.11.04  
 DESCRIPTION: MAIN FLOOR LIFE SAFETY PLAN  
 PROJECT NO.: 105111  
 ADDRESS: 457 MAIN STREET

**DOOR AND HARDWARE SCHEDULE**

DOOR				FRAME				REMARKS
DOOR NO.	SIZE	TYPE	MATERIAL	TYPE	MATERIAL	DETAIL	FIRE RATING DOOR & FRAME	
D01	900 X 2150	A	HM	F1	HM	H1, J1	3/4 HR	CLOSER, DOOR STOP, HINGES, SECURITY ACCESS CARD, 300 HIGH SS KICKPLATE, BOTH SIDES
D02	900 X 2150	A	HM	F1	HM	H1, J1	3/4 HR	CLOSER, DOOR STOP, HINGES, 300 HIGH SS KICKPLATE ON VESTIBULE SIDE, LOCKSET
D03	900 X 2150	A	HM	F1	HM	H1, J1	3/4 HR	CLOSER, DOOR STOP, HINGES, 300 HIGH SS KICKPLATE ON BOTH SIDES, LOCKSET
D04	900 X 2150	A	HM	F1	HM	H1, J1	3/4 HR	CLOSER, DOOR STOP, HINGES, 300 HIGH SS KICKPLATE ON BOTH SIDES, LOCKSET

**GENERAL NOTES (DOOR SCHEDULE)**

1. PROVIDE TRANSITION STRIPS AT DOORWAYS BETWEEN DIFFERENT FLOOR FINISHES.
2. TYPE A DOOR IS A SLAB TYPE, NO OPENINGS.

**ROOM FINISH SCHEDULE**

Room No.	Room Name	Base		Floor		Wall			Ceiling			Remarks
		Material	Finish	Material	Finish	Material	Finish	Fire Rating	Material	Finish	Height	
101	VESTIBULE	CONCRETE	MRW	CONCRETE	EF	GYP BD	PNT	1 HR	GYP BD	PNT	2400	SEE NOTE 7 BELOW.
102	ELECTRICAL ROOM	CONCRETE	MRW	CONCRETE	MRW	GYP BD	PNT	1 HR	GYP BD	PNT	2400	SEE NOTE 7 BELOW
103	MECHANICAL ROOM	CONCRETE	MRW	CONCRETE	MRW	GYP BD	PNT	1 HR	GYP BD	PNT	2740	SEE NOTE 7 BELOW
104	CORRIDOR (SOUTH WALL)	EXIST.	CAR	EXIST.	EXIST.	GYP BD	PNT	1 HR	*	*	EXIST	* SEE NOTE 8
105	LOBBY	EXIST.	EXIST.	EXIST.	EXIST.	EXIST.	EXIST.	EXIST.	EXIST.	EXIST.	EXIST	NO WORK REQUIRED

**LEGEND**

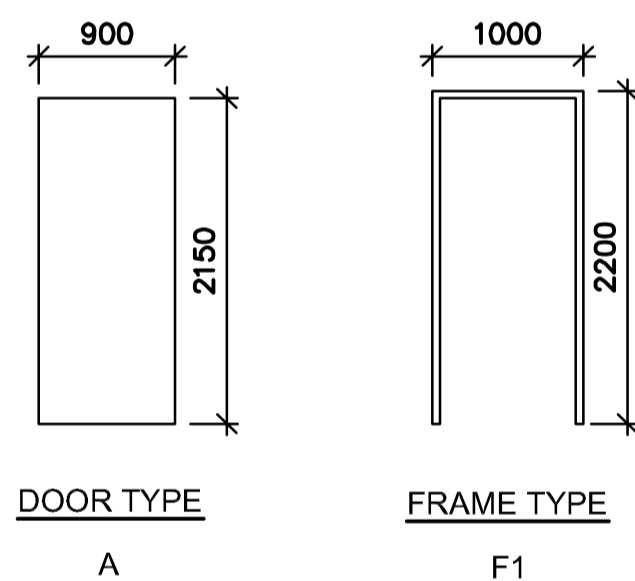
- CAR CARPET
- CONC CONCRETE
- CONC BLK CONCRETE BLOCK
- GYP BD GYPSUM BOARD
- HM HOLLOW METAL
- MRW MECHANICAL ROOM WATERPROOFING
- PF PREFINISHED
- PNT PAINT
- SS STAINLESS STEEL
- SAT SUSPENDED ACOUSTIC TILE
- UNO UNLESS NOTED OTHERWISE

**GENERAL NOTES (ROOM FINISH SCHEDULE)**

1. PRIME PAINT FINISH ALL EXPOSED STEEL LINTELS, CLIPS AND BRACKETS, ETC.
2. PREPARE CONCRETE FLOOR AND CURBS FOR SMOOTH FINISH TO ACCEPT NEW MRW FLOOR FINISH AND ON ALL SIDES AND TOPSIDE OF HOUSEKEEPING PADS BEFORE MOUNTING EQUIPMENT.
3. ALL FLOOR FINISHES AT DOORWAYS TO BE FLUSH. PROVIDE TRANSITION STRIPS WHERE DIFFERENT FLOOR FINISHES MEET.
4. PATCH & MAKE GOOD ALL CONCRETE FLOORS AND WALLS DAMAGED OR CUT FOR MISCELLANEOUS INSTALLATIONS. PREPARE SURFACE TO ACCEPT NEW FINISH.
5. PROVIDE ULC LISTED FIRE STOPPING AT ALL PENETRATIONS THROUGH FIRE RATED WALLS, CEILINGS AND TOP OF WALLS.
6. PRIME AND FINISH PAINT ALL DOORS, FRAMES, WALLS & EXPOSED STRUCTURE U.N.O.
7. REMOVE EXISTING SUSPENDED ACOUSTIC CEILING AND CONSTRUCT NEW 2 HR. FIRE RATE DRYWALL CEILING (SIM TO SHAFT WALL CONSTRUCTION).
8. WORK ON THE SOUTH WALL ONLY. REMOVE PORTIONS OF THE EXISTING CEILING TO FACILITATE WORK AND RE-CONSTRUCT. RE-PAINT ALL WALL IN THIS AREA.

**DOOR & HARDWARE AND ROOM FINISH SCHEDULE**

SCALE: NTS



**DOOR AND FRAME ELEVATION**

SCALE: 1:50

**HEAD AND JAMB DETAIL**

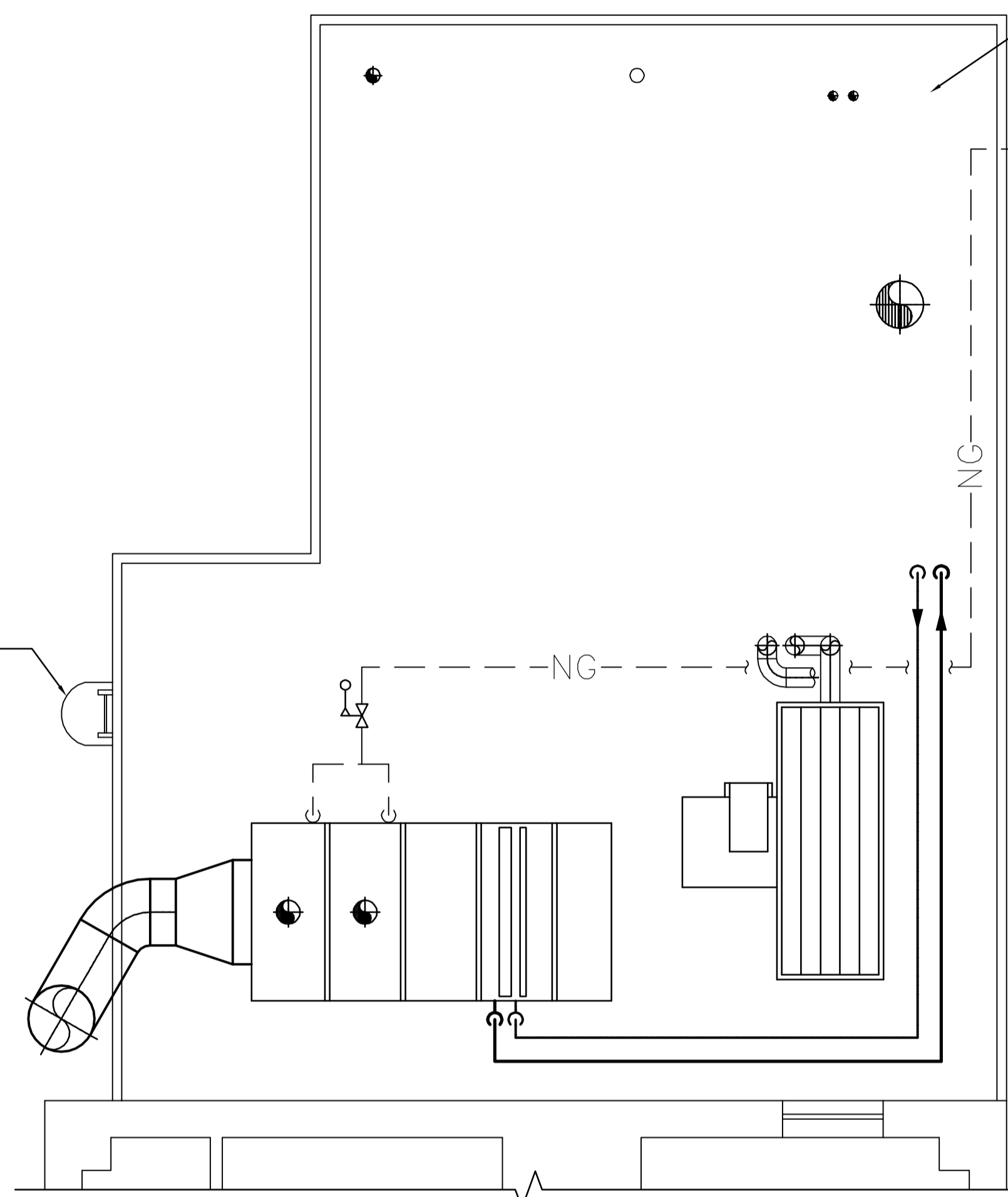
SCALE: 1:10

**STRUCTURAL NOTES**

1. NEW 190 HIGH X 125 WIDE CONCRETE CURB REINFORCED WITH 1-10M TOP CONTINUOUS COMPLETE WITH 10M VERTICAL DOWELS AT 400MM ON CENTRE, IN CENTRE OF CONCRETE CURB (MINIMUM TWO DOWELS PER CURB). DRILLED AND EPOXY GROUT THE VERTICAL DOWELS 90MM INTO EXISTING CONCRETE FLOOR UTILIZING HILTI HIT HY-150 ADHESIVE ANCHORING SYSTEM.
2. NEW 150 THICK CONCRETE HOUSEKEEPING PADS REINFORCED WITH 10M AT 300 ON CENTRE, EACH WAY, TOP. SUPPLY AND INSTALL 10M VERTICAL DOWELS AT 400MM ON CENTRE AROUND PERIMETER OF THE HOUSEKEEPING PAD (MINIMUM TWO DOWELS PER SIDE). DRILLED AND EPOXY GROUT THE VERTICAL DOWELS 90MM INTO EXISTING CONCRETE FLOOR UTILIZING HILTI HIT HY-150 ADHESIVE ANCHORING SYSTEM. TOOL TOP PERIMETER EDGE TO PROVIDE SMOOTH RADIUS.
3. TO FACILITATE THE INSTALLATION OF THE NEW SUMP PIT, FLOOR DRAINS AND TRAP PRIMER, SAW CUT EXISTING CONCRETE FLOOR AS REQUIRED. DRILL AND EPOXY GROUT 15M BARS @ 300 o.c. ON THE VERTICAL FACE OF THE SLAB. PREPARE BASE AND POUR NEW 30 MPa CONCRETE.

**CONCRETE AND REINFORCING STEEL NOTES**

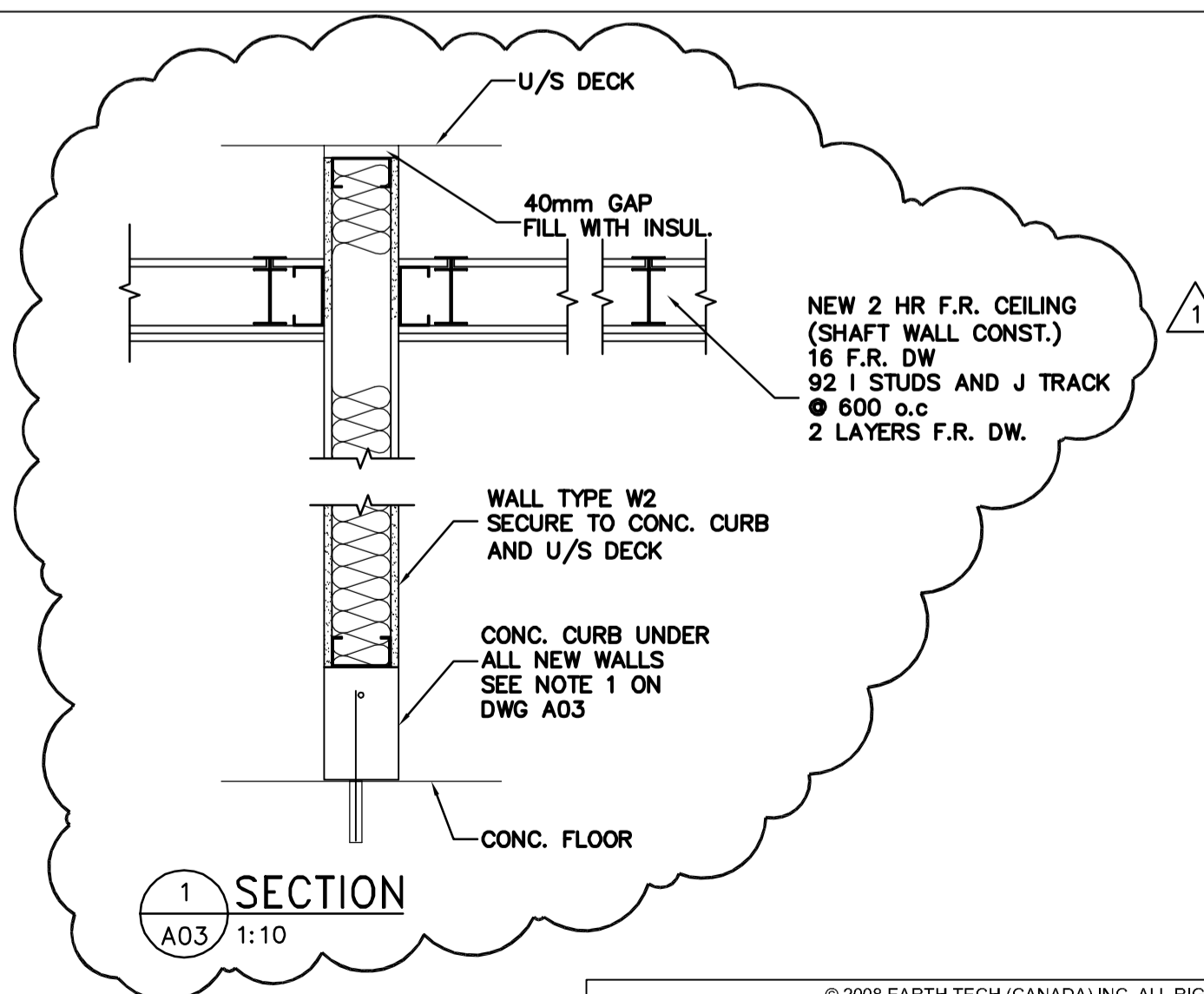
1. CONCRETE, FORMWORK AND REINFORCING STEEL TO BE IN ACCORDANCE WITH CAN/CSA A23.1-04/A23.2-04.
2. CONCRETE FOR CONCRETE CURBS TO BE CLASS N, 25 MPA AT 28 DAYS, MAXIMUM WATER-TO-CEMENTING MATERIALS RATIO 0.50.
3. CONCRETE FOR INFILL OF FLOOR AREA TO BE CLASS N, 25 MPA AT 28 DAYS, MAXIMUM WATER-TO-CEMENTING MATERIALS RATIO 0.50 AND MINIMUM SYNTHETIC FIBERS 0.9 KG/M3.
4. SYNTHETIC FIBERS TO BE FIBRILLATED POLYPROPYLENE WITH MINIMUM LENGTH OF 19MM IN ACCORDANCE WITH ASTM C1116.
5. FINISH FORMED CONCRETE SURFACES TO: SMOOTH-FORM FINISH. MAINTAIN 50MM CONCRETE COVER UNLESS NOTED OTHERWISE ON THE DRAWINGS.
6. FINISH INFILL FLOOR AREA TO CLASS A.
7. REINFORCING STEEL TO BE IN ACCORDANCE WITH CAN/CSA-G30.18-M92, MINIMUM 400 MPA YIELD GRADE.



**ROOF PLAN**

SCALE: 1:50

OF MAIN FLOOR MECHANICAL ROOM



SECTION 1 A03 1:10

**APEGM**  
 Certificate of Authorization  
 Earth Tech Canada Inc.  
 No. 730 Expiry: April 30, 2009

**AECOM**

© 2008 EARTH TECH (CANADA) INC. ALL RIGHTS RESERVED. THIS DOCUMENT IS PROTECTED BY COPYRIGHT LAW AND MAY NOT BE USED, REPRODUCED OR MODIFIED IN ANY MANNER OR FOR ANY PURPOSE EXCEPT WITH THE WRITTEN PERMISSION OF EARTH TECH (CANADA) INC. DOING BUSINESS AS AECOM (AECOM) OR A PARTY TO WHICH ITS COPYRIGHT HAS BEEN ASSIGNED. AECOM ACCEPTS NO RESPONSIBILITY, AND DENIES ANY LIABILITY WHATSOEVER, TO ANY PARTY THAT USES, REPRODUCES, MODIFIES, OR RELIES ON THIS DOCUMENT WITHOUT AECOM'S EXPRESS WRITTEN CONSENT.

NOTES :

1	ISSUED FOR ADDENDUM 4	GGP	2008/01/06
0	ISSUED FOR ADDENDUM 1	DC	2008/12/05
NO.	REVISION/DESCRIPTION	BY	DATE

SEALS

**EARTH TECH | AECOM**

**SHAW**  
 ARCHITECT

DRAWN BY	SIC	CHECKED BY	APPROVED
DATE	2008/12/01	USER APPROVAL	

**Winnipeg** CITY OF WINNIPEG  
 PLANNING, PROPERTY AND  
 DEVELOPMENT DEPARTMENT  
 CIVIC ACCOMMODATIONS DIVISION  
 300 - 65 GARRY ST. R3C 4K4

PROJECT  
**CONFEDERATION BUILDING**  
 SUPPLEMENTARY HEATING UPGRADES  
 PHASE 1 - CITY BID OPP. NO. 757-2008  
 457 MAIN STREET, WINNIPEG, MANITOBA

SHEET TITLE  
**DOOR & ROOM FINISH SCHEDULE**  
**ROOF PLAN & STRUCTURAL NOTES**

SCALE	PROJECT NO.	SHEET NO.
NTS	105111	A03

DRAWING SHEET SIZE: A1 (841mm x 594mm) PLOT 1:1