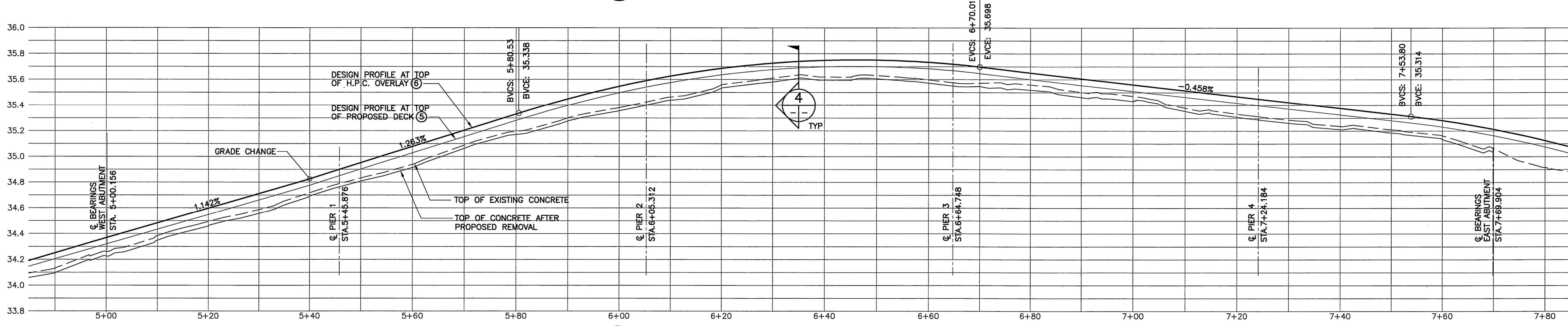
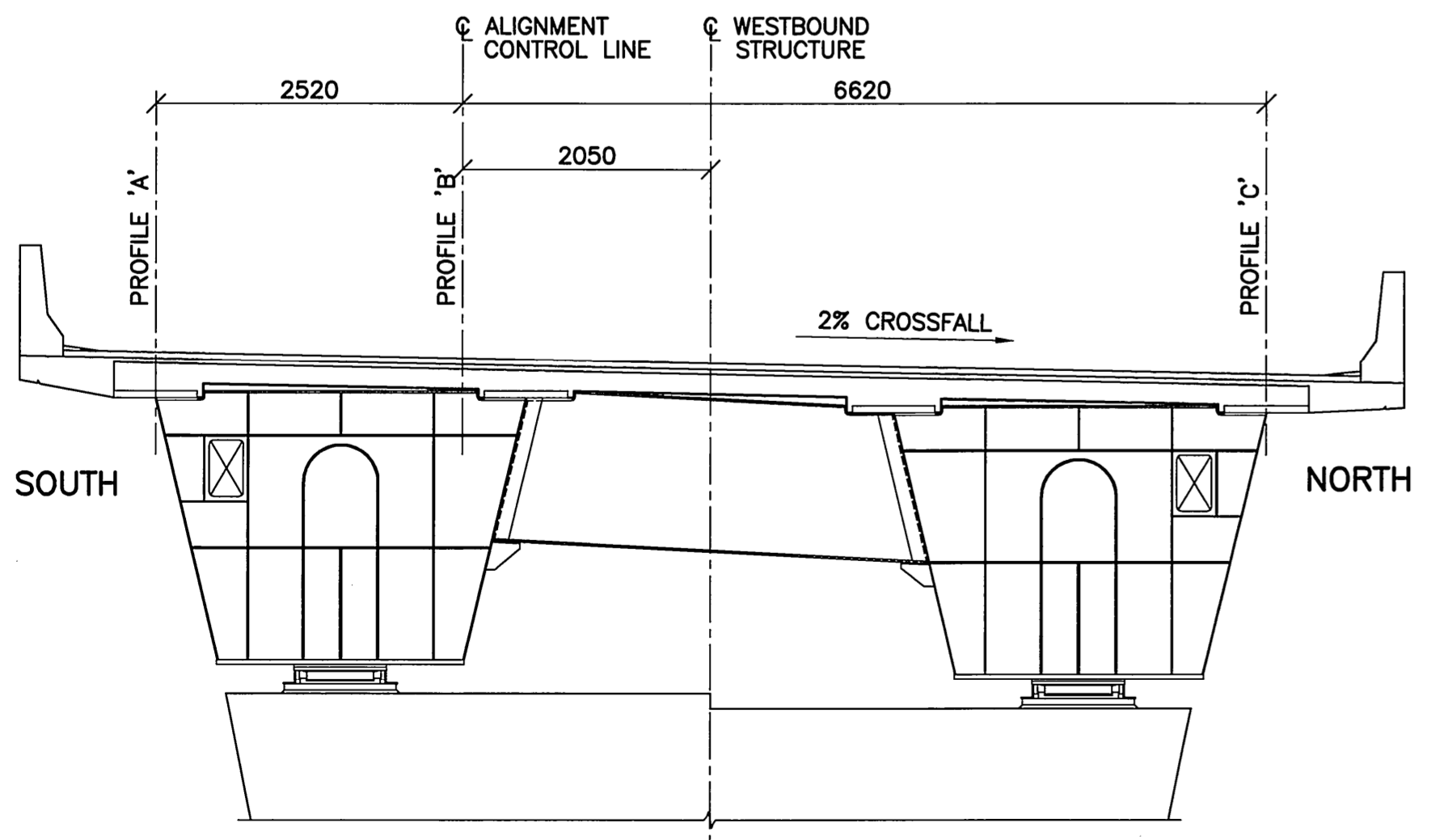


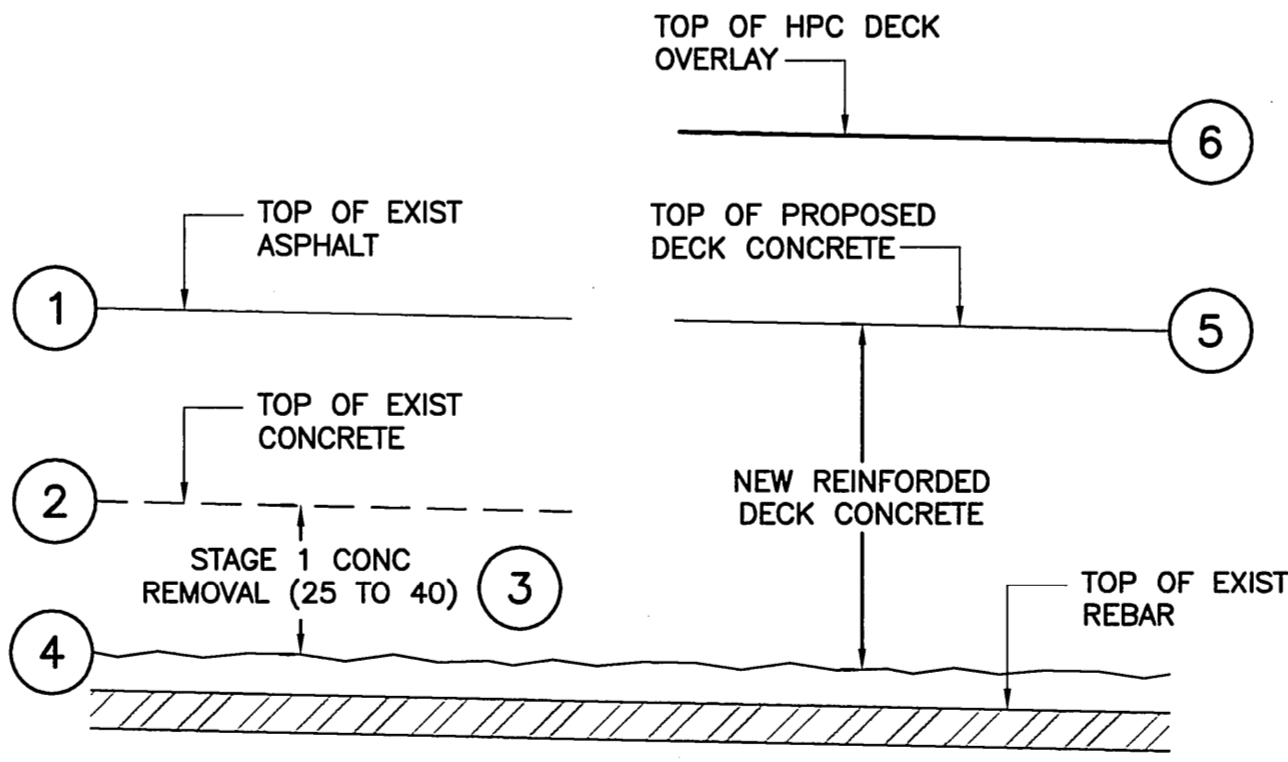
1 PROFILE 'A' - 2.52m SOUTH OF ALIGNMENT CONTROL LINE



2 PROFILE 'B' - ALONG ALIGNMENT CONTROL LINE



3 EXISTING CROSS SECTION SHOWING PROFILE LOCATIONS



4 SECTION N.T.S.

DECK DEMOLITION AND RECONSTRUCTION PROCEDURE:

1. REMOVE EXISTING ASPHALT (50mm± THICK).
2. CONDUCT A SURVEY FOR THE ELEVATION OF THE EXISTING DECK CONCRETE AT EACH STATION ALONG PROFILE LINES A, B, AND C TO FILL COLUMN (2) IN THE TABLE ON SHEET 7.
3. STAGE 1 REMOVALS: REMOVE 25 TO 40mm (MIN 25mm) OF THE EXISTING CONCRETE USING ROTOMILLING AND/OR HYDRODEMOLITION AS PER THE LIMIT SHOWN ON THE PROFILE DIAGRAMS. (SEE SHEET 7, COLUMN (3)) PREPARE EXPOSED CONCRETE DECK SURFACE USING HYDRODEMOLITION TO PROVIDE A ROUGHNESS OF 6mm AMPLITUDE.
4. STAGE 2 REMOVALS: ADDITIONAL CONCRETE REMOVALS MAY BE REQUIRED AS PER CONTRACT ADMINISTRATOR'S INSTRUCTION. THESE REMOVALS WILL BE DESIGNATED BY THE FOLLOWING:
 TYPE 1: REMOVAL OF CONCRETE BELOW TOP LAYERS OF REBAR.
 TYPE 2: FULL DEPTH REMOVAL OF DECK.
5. ENSURE THAT THE EXISTING TOP LAYER OF REINFORCEMENT IS NOT DAMAGED BY CONCRETE REMOVAL OPERATIONS. TOUCH-UP EPOXY COATING ON EXISTING REINFORCEMENT IF DAMAGED.
6. CONDUCT A SURVEY FOR THE EXISTING CONCRETE AFTER ALL TYPES OF REMOVALS, AT EACH STATION ALONG PROFILE LINES A, B, AND C TO FILL COLUMNS (4) IN THE TABLE ON SHEET 7.
7. THE CONTRACT ADMINISTRATOR WILL PROVIDE THE FINAL ELEVATIONS FOR THE NEW DECK CONCRETE AND FOR THE TOP OF THE HPC OVERLAY TO FILL IN COLUMN (5) AND (6) IN THE TABLE ON SHEET 7.
8. THE CONTRACTOR TO ALLOW FOR TEN WORKING DAYS BETWEEN HIS SUBMISSION OF THE SURVEY DATA IN PROCEDURE 6 AND THE RECEIPT OF THE ELEVATIONS IN NOTE 7 FROM THE CONTRACT ADMINISTRATOR.



B.M. ELEV.	F.B.

WARDROP Engineering Inc.

DESIGNED BY: E.F.S.	CHECKED BY:
DRAWN BY: P.S.	APPROVED BY:
HOR. SCALE: AS NOTED	ACCEPTED BY: [Signature]
VERTICAL: AS NOTED	DATE: 08-02-05
00 ISSUED FOR TENDER 08.02.05	DATE: 08.02.05
NO. REVISIONS	DATE BY



THE CITY OF WINNIPEG
 PUBLIC WORKS DEPARTMENT
 TRANSPORTATION ENGINEERING DIVISION

FORT GARRY TWIN BRIDGES
 WESTBOUND STRUCTURE REHABILITATION
 AND ASSOCIATED ROADWORKS

CITY DRAWING NUMBER
B173-08-006W
 SHEET **6** OF **54**

DECK PROFILE 1

6

CONSULTANT DRAWING NO.
 0600070700-DWG-S1106-00