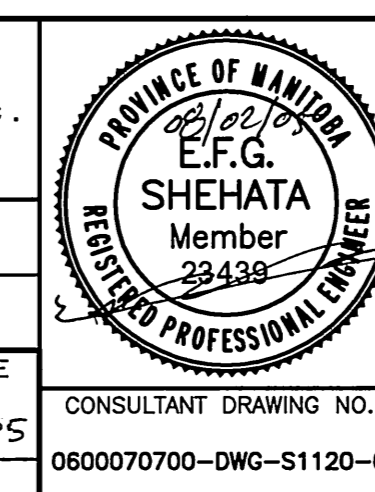


B.M. ELEV.	F.B.	WARDROP Engineering Inc.	
		DESIGNED BY: E.F.S.	CHECKED BY:
		DRAWN BY: P.S.	APPROVED BY:
		HOR. SCALE: AS NOTED	ACCEPTED BY: DATE: 08-02-05
00	ISSUED FOR TENDER	08.02.05	6FS
NO.	REVISIONS	DATE	BY
		08.02.05	



THE CITY OF WINNIPEG
 PUBLIC WORKS DEPARTMENT
 TRANSPORTATION ENGINEERING DIVISION

Winnipeg

FORT GARRY TWIN BRIDGES
 WESTBOUND STRUCTURE REHABILITATION
 AND ASSOCIATED ROADWORKS

STIFFENER PLATES INSTALLATION
 ON ABUTMENT DIAPHRAGMS

CITY DRAWING NUMBER: B173-08-020W
 SHEET 20 OF 54

CONSULTANT DRAWING NO.: 0600070700-DWG-S1120-00

20