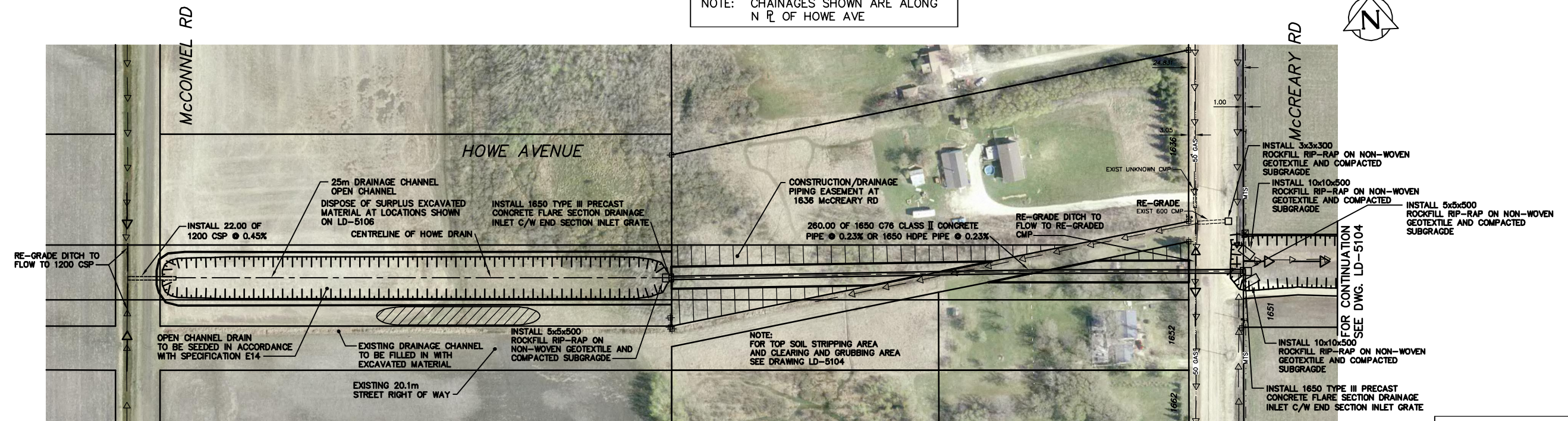


NOTE: CHAINAGES SHOWN ARE ALONG N R OF HOWE AVE



WARNING
 IF POWER EQUIPMENT OR EXPLOSIVES ARE TO BE USED FOR EXCAVATION ON THIS PROJECT THE CONTRACTOR MUST:
 1) NOTIFY THE GAS COMPANY OF THE PROPOSED LOCATION OF EXCAVATION.
 2) TAKE PRECAUTION TO AVOID DAMAGE TO GAS COMPANY INSTALLATIONS.
 SEE PROVINCIAL REGULATION 210/72 FOR DETAILS

200 WM	WATERMAIN	200 WM	SL, HYDRO	150 WM	WATERMAIN	150 WM
⊕	HYDRANT	⊕	MTS	+	HYDRANT	+
⊙	VALVE	⊙	TRAFFIC SIGNALS	⊗	VALVE	⊗
525 LDS	LAND DRAINAGE SEWER	525 LDS	GAS	50 GAS	300 LDS	LAND DRAINAGE SEWER
375 WWS	WASTEWATER SEWER	375 WWS	SURVEY BAR	250 WWS	WASTEWATER SEWER	250 WWS
○	MANHOLE	●	FENCE	⊖	PROFILE	⊖
□	CATCH BASIN	■	POLE - HYDRO, MTS	=====	GROUND ABOVE PIPE	=====
▽	CURB INLET	▽	CURB STOP	▲	☉ DITCH (NORTH & WEST)	▲
⊕	JUNCTIONS	⊕	GUY ANCHOR	▽	☉ DITCH (SOUTH & EAST)	▽
⊕	CULVERT	⊕	LIGHT STANDARD	⊕	GUTTER (NORTH & WEST)	⊕
⊕	ANODE	⊕	TREE	⊕	GUTTER (SOUTH & EAST)	⊕
EXISTING	LEGEND-PLAN	PROPOSED	EXISTING	LEGEND-PLAN	PROPOSED	EXISTING
EXISTING	LEGEND-PROFILE	PROPOSED	EXISTING	LEGEND-PROFILE	PROPOSED	EXISTING

LOCATION APPROVED	B.M. ELEV.	FIELD BOOK #:
UNDERGROUND STRUCTURES	POSTED TO LBS	
SUPV. U/G STRUCTURES COMMITTEE	DATE	
NOTE:	DATE	
LOCATION OF UNDERGROUND STRUCTURES AS SHOWN ARE BASED ON THE BEST INFORMATION AVAILABLE BUT NO GUARANTEE IS GIVEN THAT ALL EXISTING UTILITIES ARE SHOWN OR THAT THE GIVEN LOCATIONS ARE EXACT. CONFIRMATION OF EXISTENCE AND EXACT LOCATION OF ALL SERVICES MUST BE OBTAINED FROM THE INDIVIDUAL UTILITIES BEFORE PROCEEDING WITH CONSTRUCTION.	NO.	REVISIONS
	DATE	BY

THIS DRAWING CONTAINS A 2005 AERIAL PHOTO

CITY OF WINNIPEG
 WATER AND WASTE
 ENGINEERING DIVISION

DESIGNED BY: CWT
 CHECKED BY: GEM
 DRAWN BY: WKT
 APPROVED BY: GEM
 HOR. SCALE: 1:1000
 VERTICAL SCALE: 1:50
 DATE: 2008 10 09

ENGINEER'S SEAL
 ORIGINAL SIGNED BY G.E. MOHR
 08/10/09

THE CITY OF WINNIPEG
 WATER AND WASTE DEPARTMENT

CONSTRUCTION OF THE CHARLESWOOD
 HOWE AVENUE - PHASE 1
 McCONNELL ROAD TO
 McCREARY ROAD

SHEET 1 OF 4
 CITY DRAWING NUMBER
 LD-5103