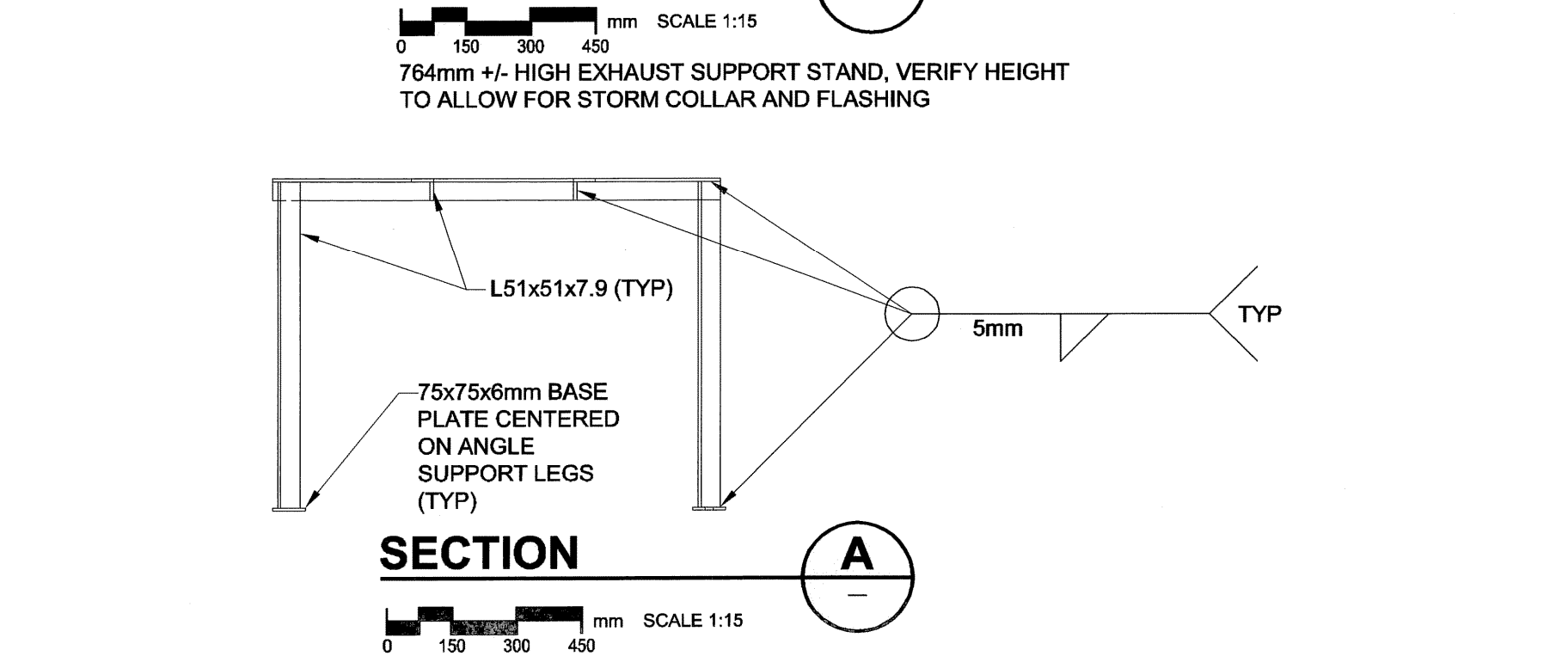
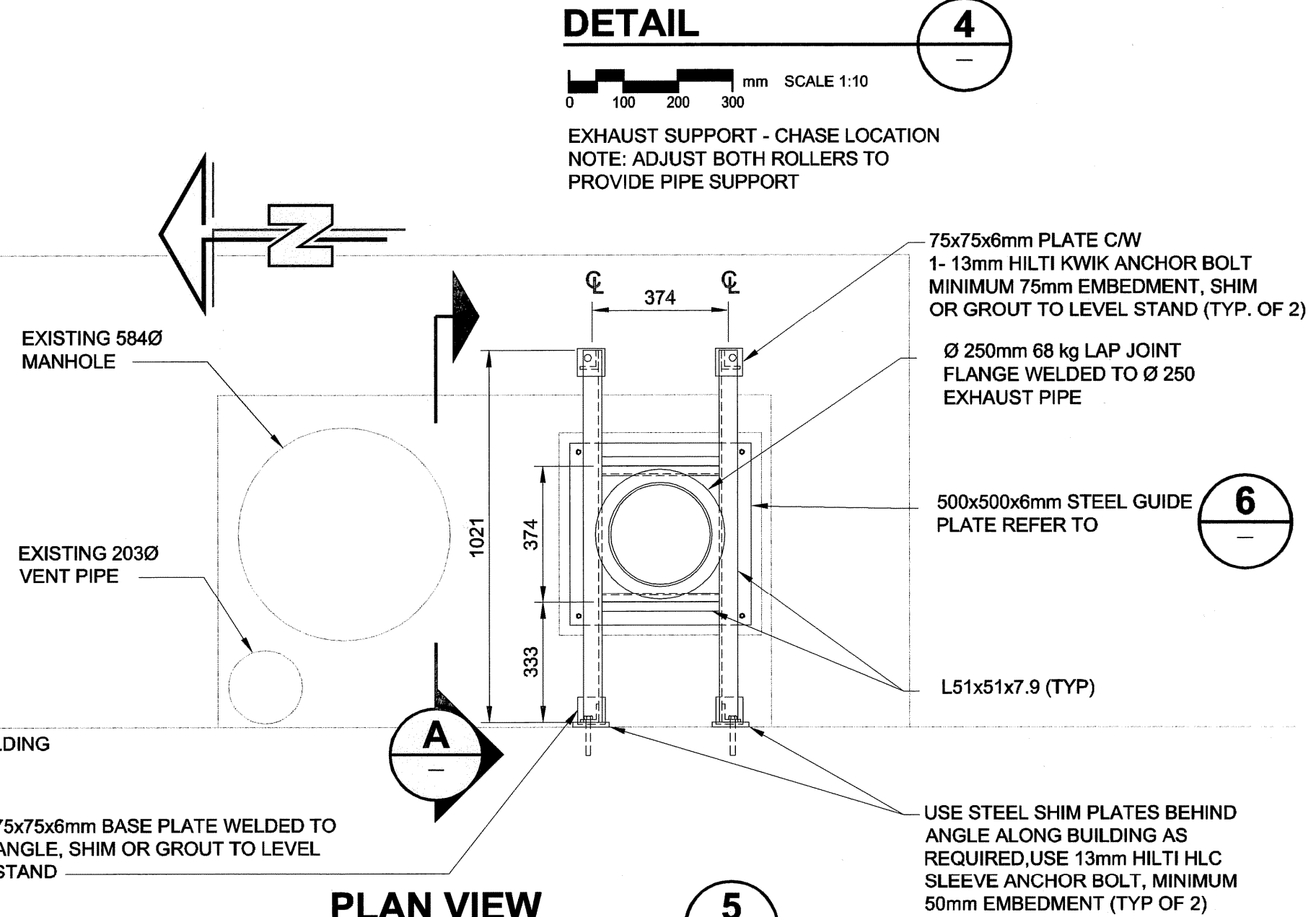
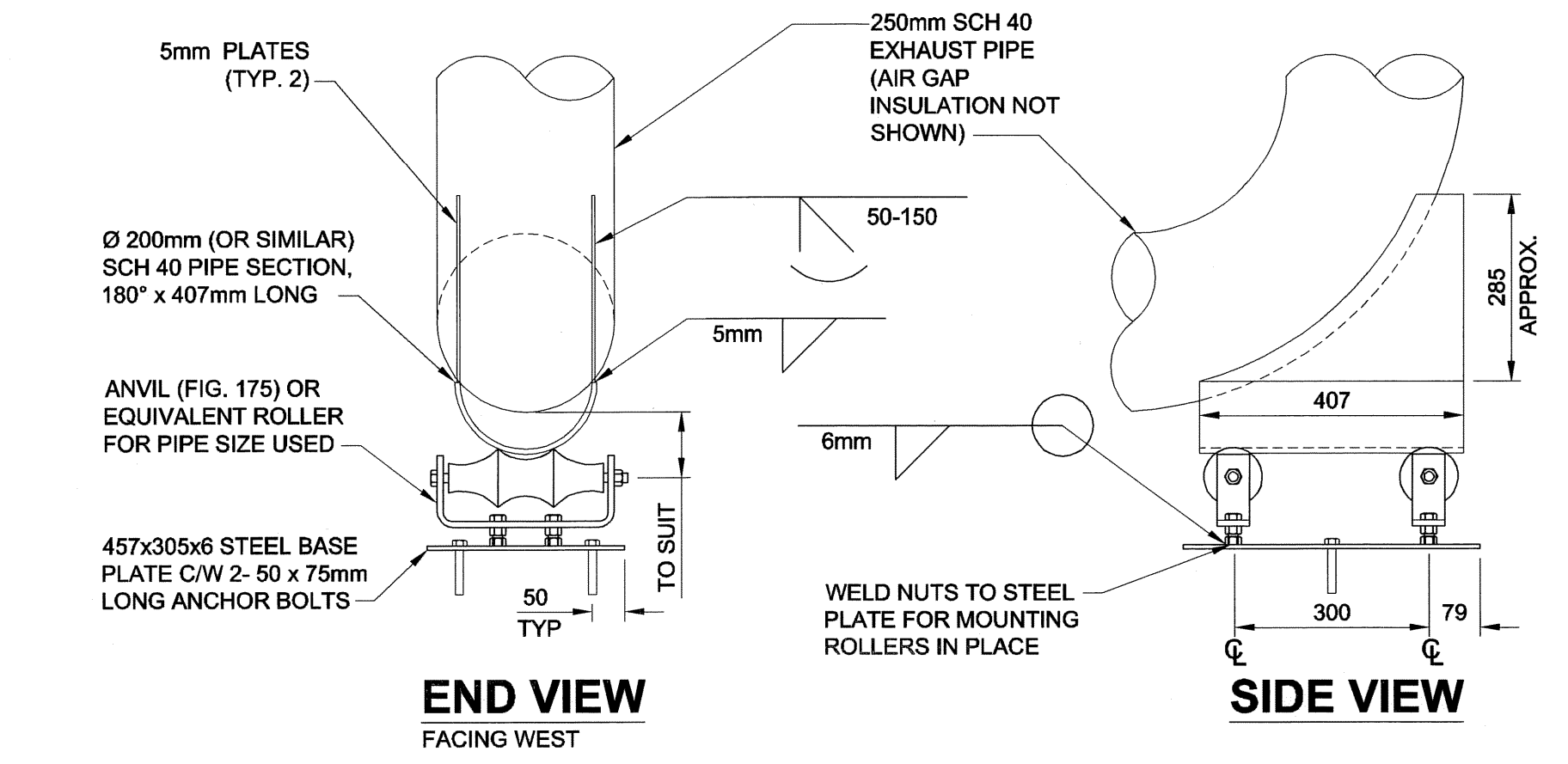
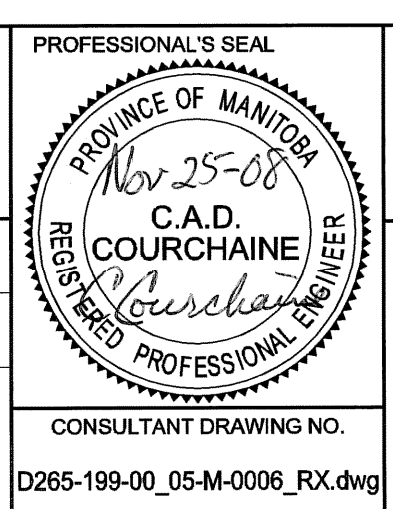


- DRAWING NOTES:**
- EXHAUST PIPE EXPANSION JOINTS TO PROVIDE A MINIMUM OF 37mm (1.5") AXIAL AND 12mm (0.5") LATERAL DEFLECTION UNLESS OTHERWISE NOTED.
 - FLANGED EXPANSION JOINTS SHALL BE USED.
 - EXHAUST PIPE SUPPORTS TO BE ROLLER TYPE EXCEPT WHERE SHOWN AS FIXED.
 - FIXED SUPPORTS SHALL PREVENT MOTION OF PIPE AT THAT LOCATION. DETAIL 6 ON M0005.
 - ALL AIR INTAKE PIPING SUPPORTS TO BE ROLLER TYPE.
 - FINAL LOCATION OF EXHAUST AND COMBUSTION AIR PIPING TO BE ADJUSTED TO SUIT ENGINE SELECTION.
 - PERFORM TEST TO CONFIRM AIR GAP AIR FLOW AFTER INSULATION IS INSTALLED, USING 45LPS (90CFM) AT 25Pa (0.1") S.P. SEE SPECIFICATIONS.



DESIGNED BY CC		CHECKED BY
DRAWN BY RS		APPROVED BY
HOR. SCALE AS NOTED	VERT. SCALE AS NOTED	RELEASED FOR CONSTRUCTION
NO.	REVISIONS	DATE



UMA | AECOM

© 2008 UMA Engineering Ltd. All Rights Reserved. This document is protected by copyright law and may not be used, reproduced or modified in any manner or for any purpose except with the written permission of UMA Engineering Ltd. or a party to which its copyright has been assigned. UMA accepts no responsibility, and denies any liability whatsoever, to any party that uses, reproduces, modifies, or relies on this document without UMA's express written consent.

PROFESSIONAL'S SEAL

THE CITY OF WINNIPEG
WATER AND WASTE DEPARTMENT

G. C. MACLEAN PUMPING STATION
P-26 ENGINE REPLACEMENT
MECHANICAL
EXHAUST PIPING AND SUPPORTS
PLAN AND DETAILS

SHEET 1 OF 1
CITY DRAWING NUMBER
REV B
1-0630M-M0006-001

APEGM
Certificate of Authorization
UMA Engineering Ltd. (MB)
No. 256 Date: Nov 25-08

UMA REVIEW