

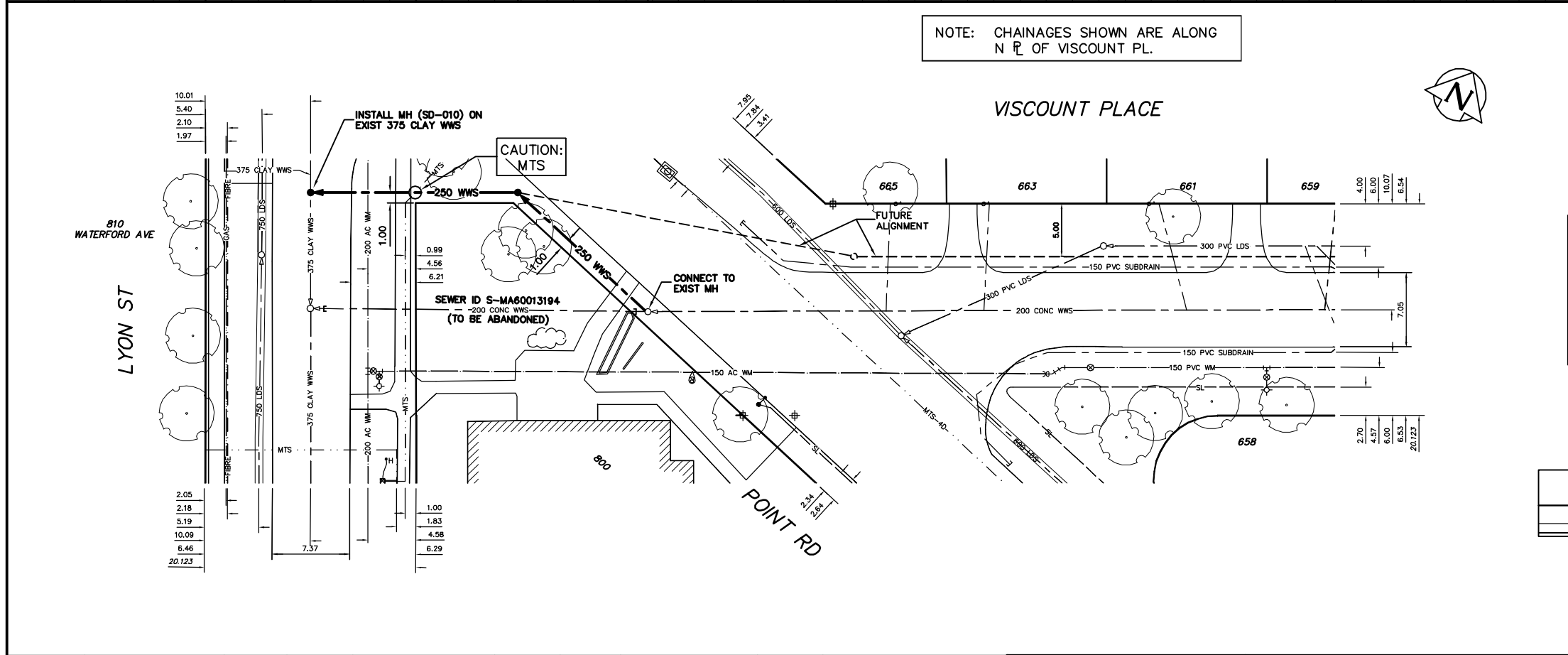
WATER SERVICE INFORMATION

ADDRESS	SIZE(mm) & TYPE (STREET)	SIZE(mm) & TYPE (PROP)	SHORT & LONG MEASUREMENT	CORP. LOCATION
661 VISCOUNT PL RESIDENTIAL	20 COPPER	20 COPPER	3.31 WEL HSE	2.8 E S/C
663 VISCOUNT PL RESIDENTIAL	20 COPPER	20 COPPER	30.05 EEL POINT	5.98 E S/C
665 VISCOUNT PL RESIDENTIAL	20 COPPER	20 COPPER	0.52 EWL HSE	13.3 E S/C
665 VISCOUNT PL RESIDENTIAL	20 COPPER	20 COPPER	14.33 EEL POINT	0.4 N S/C
800 POINT RD RESIDENTIAL	32 COPPER	32 COPPER	2.44 WEL HSE	SERVICED OFF LYON
810 WATERFORD AVE RESIDENTIAL	50 COPPER	50 COPPER	43.83>NNL RIVERWOOD	SERVICED OFF LYON
			8.79 SSL POINT	

SEWER SERVICE INFORMATION

ADDRESS	SIZE	E. DIST	JUNCTION TIE
658 VISCOUNT PL RESIDENTIAL	200	16.00	W OF 1ST MH E POINT
661 VISCOUNT PL RESIDENTIAL	200	35.30	W OF 1ST MH E POINT
663 VISCOUNT PL RESIDENTIAL	200	44.60	W OF 1ST MH E POINT
800 POINT RD COMMERCIAL	200	42.80	S. 1ST MH N RIVERWOOD
810 WATERFORD AVE COMMERCIAL	200	-	-

NOTE: CHAINAGES SHOWN ARE ALONG N \bar{L} OF VISCOUNT PL.



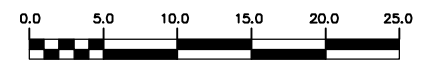
- CONSTRUCTION NOTES:**
1. INSTALL SEWER BY TRENCHLESS METHODS.
 2. CONFIRM THE LOCATION OF ALL SEWER SERVICES PRIOR TO CONSTRUCTION.
 3. BACKFILL WITHIN 1.0 OF PAVEMENT TO BE CLASS 3.
 4. MAINTAIN A MINIMUM SLOPE OF 1% WHERE POSSIBLE FOR ALL SEWER SERVICES.

SEWER JUNCTION INFORMATION FROM SEWER VIDEO INSPECTION S-MA60013194

DISTANCE FROM MH S-MH60011332
NO INFORMATION AVAILABLE

METRIC
WHOLE NUMBERS INDICATE MILLIMETRES
DECIMALIZED NUMBERS INDICATE METRES

WARNING
IF POWER EQUIPMENT OR EXPLOSIVES ARE TO BE USED FOR EXCAVATION ON THIS PROJECT THE CONTRACTOR MUST:
1) NOTIFY THE GAS COMPANY OF THE PROPOSED LOCATION OF EXCAVATION.
2) TAKE PRECAUTION TO AVOID DAMAGE TO GAS COMPANY INSTALLATIONS.
SEE PROVINCIAL REGULATION 210/72 FOR DETAILS



200 WM	WATERMAIN	200 WM	SL, HYDRO	150 WM	WATERMAIN	150 WM
+	HYDRANT	+	MTS	+	HYDRANT	+
⊕	VALVE	⊕	TRAFFIC SIGNALS	+	VALVE	+
525 LDS	LAND DRAINAGE SEWER	525 LDS	GAS	300 LDS	LAND DRAINAGE SEWER	300 LDS
375 WWS	WASTEWATER SEWER	375 WWS	SURVEY BAR	250 WWS	WASTEWATER SEWER	250 WWS
○	MANHOLE	○	FENCE	⊕	PROFILE	⊕
□	CATCH BASIN	□	POLE - HYDRO, MTS	=====	GROUND ABOVE PIPE	=====
▽	CURB INLET	▽	CURB STOP	⊕	DITCH (NORTH & WEST)	⊕
+	JUNCTIONS	+	GUY ANCHOR	⊕	DITCH (SOUTH & EAST)	⊕
⊕	CULVERT	⊕	LIGHT STANDARD	⊕	GUTTER (NORTH & WEST)	⊕
⊕	ANODE	⊕	TREE	⊕	GUTTER (SOUTH & EAST)	⊕
EXISTING	LEGEND-PLAN	PROPOSED	EXISTING	LEGEND-PLAN	PROPOSED	EXISTING
				LEGEND-PROFILE		

LOCATION APPROVED UNDERGROUND STRUCTURES

SUPV. U/G STRUCTURES COMMITTEE	DATE

NOTE:
LOCATION OF UNDERGROUND STRUCTURES AS SHOWN ARE BASED ON THE BEST INFORMATION AVAILABLE BUT NO GUARANTEE IS GIVEN THAT ALL EXISTING UTILITIES ARE SHOWN OR THAT THE GIVEN LOCATIONS ARE EXACT. CONFIRMATION OF EXISTENCE AND EXACT LOCATION OF ALL SERVICES MUST BE OBTAINED FROM THE INDIVIDUAL UTILITIES BEFORE PROCEEDING WITH CONSTRUCTION.

CITY OF WINNIPEG WATER AND WASTE ENGINEERING DIVISION

DESIGNED BY	CHECKED BY
NC	NC
DRAWN BY	APPROVED BY
CJH	KZ
HOR. SCALE	VERTICAL
1:250	1:50
DATE	DATE
2008 12 03	

ENGINEER'S SEAL
ORIGINAL SIGNED BY K.R. ZUREK
08/12/04

THE CITY OF WINNIPEG WATER AND WASTE DEPARTMENT

2005 SEWER RENEWALS CONTRACT 33
VISCOUNT PLACE
MH AT W \bar{L} POINT ROAD TO MH AT LYON STREET

SHEET 6 OF 7
CITY DRAWING NUMBER 8742