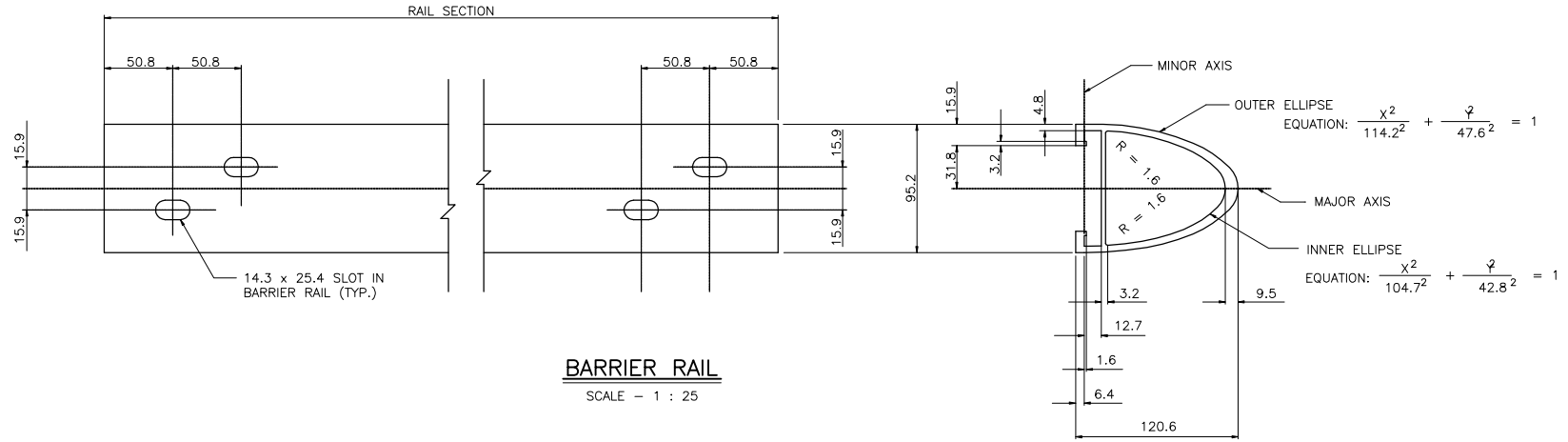


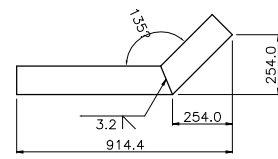
RAIL CLAMP BAR

SCALE - 1 : 25



BARRIER RAIL

SCALE - 1 : 25

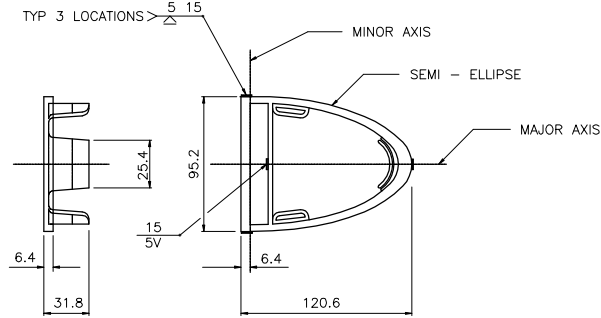


PLAN



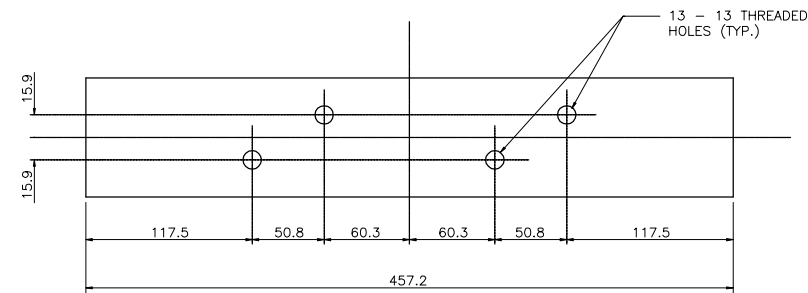
TERMINAL END

(FABRICATED FROM BARRIER RAIL)
SCALE - 1 : 150



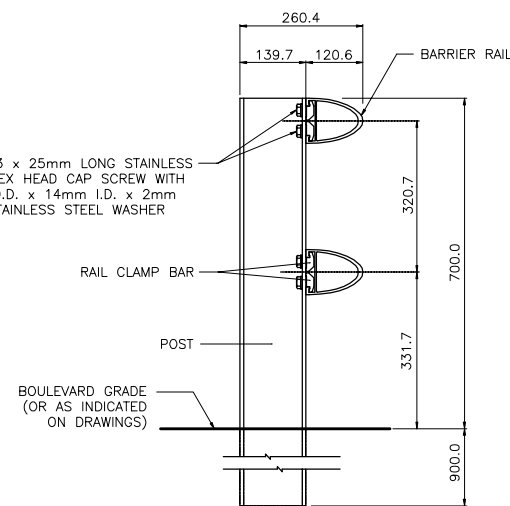
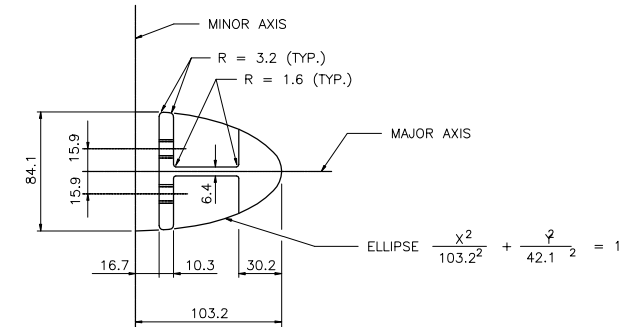
RAIL END CAP

SCALE - 1 : 25



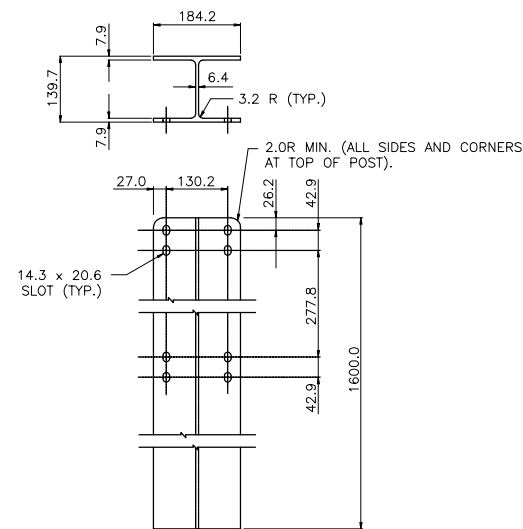
RAIL SPLICE BAR

SCALE - 1 : 25



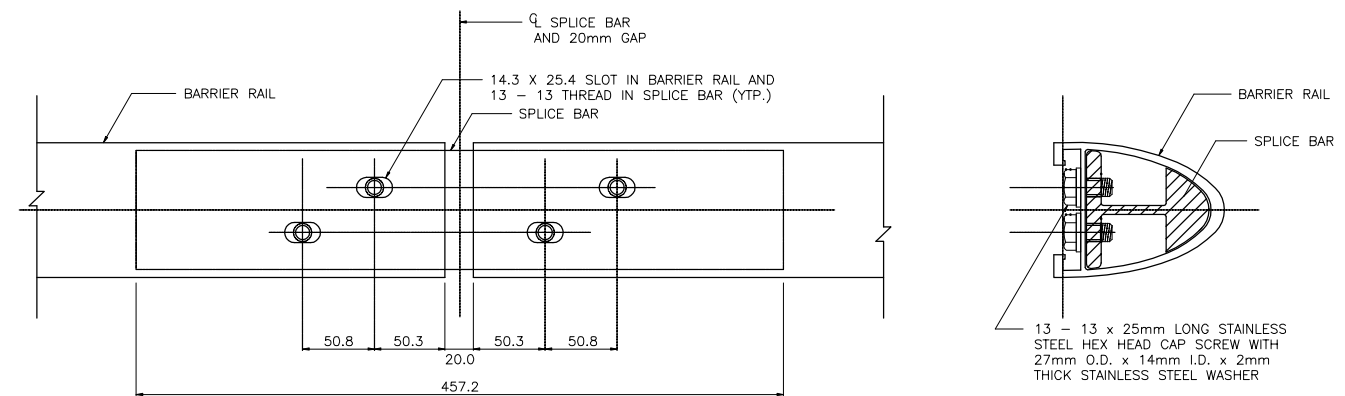
RAIL TO POST ASSEMBLY DETAIL

SCALE - 1 : 75



1.600m POST

(0.800m POST SIMILAR EXCEPT WITH ONLY FOUR SLOTS AT TOP OF POST)
SCALE - 1 : 75



SPLICE BAR TO RAIL ASSEMBLY DETAIL

SCALE - 1 : 25

MATERIAL SPECIFICATION

- ALUMINUM RAILS, POSTS, SPLICE BARS, AND RAIL END CAPS SHALL CONFORM TO ASTM B221, ALLOY 6061 - T6, OR ALLOY 6351 - T6.
- TYPE 316 STAINLESS STEEL WASHERS SHALL CONFORM TO ASTM A296, TYPE 316.
- CAP SCREWS SHALL CONFORM TO ASTM A276, TYPE 316 STAINLESS STEEL.
- ANTI-SEIZE COATING TO BE APPLIED TO ALL THREADED COMPONENTS WHEN BEING ASSEMBLED, i.e. LPS-3-MANUFACTURED BY HOLT LLOYD (CANADA) LTD., MARKHAM, ONTARIO L3R 2Z3
- TWO COATS, EACH 1mm IN THICKNESS OF ALKALI-RESISTANT BITUMINOUS PAINT SHALL BE APPLIED ON THE SURFACES OF POSTS AND RAILS THAT ARE TO BE IN CONTACT WITH THE GROUND.

B.M. ELEV.	DESIGNED BY N/B		ENGINEER'S SEAL	<p>THE CITY OF WINNIPEG PUBLIC WORKS DEPARTMENT</p>	CITY DRAWING NUMBER C316-08-10 SHEET 10 OF 10	
	DRAWN BY N.B.G.					OMAND'S CREEK CULVERT THROUGH SARGENT AVENUE
	CHECKED BY J.S.B.					
	APPROVED BY	RELEASED FOR CONSTRUCTION	CONSULTANT PROJECT NO. 04-3330-2000	BID OPPORTUNITY 859-2008		
2 ISSUED FOR TENDER	12/08/08 N.B.G.	HOR. SCALE AS SHOWN				
1 ISSUED FOR CITY REVIEW	11/21/08 N.B.G.	VERTICAL AS SHOWN				
NO. REVISIONS	DATE BY	DATE NOV. 21, 2008	DATE			

4:\Dillon Acad File\CAD\043330\Draw\Current\10_BALANCED BARRIER.dwg 9/25/2008