

FLOOR PLAN  
SCALE: 1/2" = 1'-0"

VALVE PIT - SARGENT AVE. & EMPRESS ST.

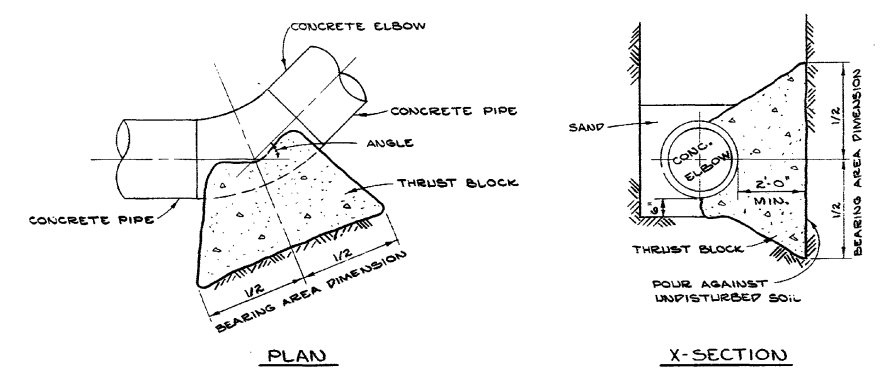
LIST OF THRUST BLOCKS					
NO.	LOCATION	DIA.	ANGLE	BEARING AREA	
1.	R.I. STA. 0 + 57.42	20"	22° 30'	3'-6" X 3'-6"	
2.	R.I. STA. 1 + 13.92	24"	15° 00'	3'-0" X 4'-0"	
3.	R.I. STA. 41 + 50	24"	15° 00'	3'-0" X 4'-0"	
4.	R.I. STA. 42 + 23.42	24"	15° 00'	3'-0" X 4'-0"	

LIST OF VERTICAL THRUST BLOCKS					
NO.	LOCATION	DIA.	ANGLE	BEARING AREA	
1.	R.I. STA. 0 + 39	20"	22° 30'	2'-16" X PILE @ 20' LONG	
2.	R.I. STA. 1 + 50.1	24"	15° 00'		

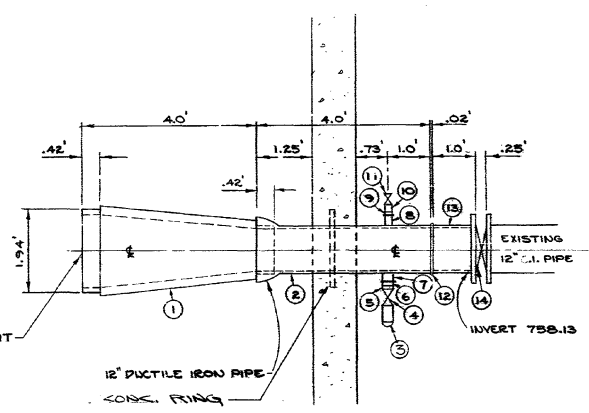
LIST OF MATERIALS FOR CONNECTION TO EXISTING VALVE PIT		
NO.	DESCRIPTION	QUANTITY
1.	20" TO 12" PRESTRESSED CONC. PIPE REDUCER PLAIN END TO PLAIN END 4'-0" LONG	1
2.	12" DUCTILE IRON PIPE 4'-0" LONG TYTON JOINT TO VICTAULIC COUPLING	1
3.	3" 90° ELBOW GALV. - THREADED	1
4.	3" BRONZE GATE VALVE THREADED	1
5.	3" BRONZE NIPPLE THREADED	1
6.	3" BRONZE THREADED FLANGE	1
7.	3" STEEL OUTLET FLANGED	1
8.	2" STEEL OUTLET FLANGED	1
9.	2" BRONZE THREADED FLANGE	1
10.	2" BRONZE NIPPLE THREADED	1
11.	2" BRONZE GATE VALVE THREADED	1
12.	12" VICTAULIC COUPLING STYLE # 51	1
13.	12" DUCTILE IRON FILLER PIPE VICTAULIC TO FLANGED END 1'-0" LONG	1
14.	12" BUTTERFLY VALVE KEYSTONE MODEL # 990	1

0 SUPPLIED BY THE CITY

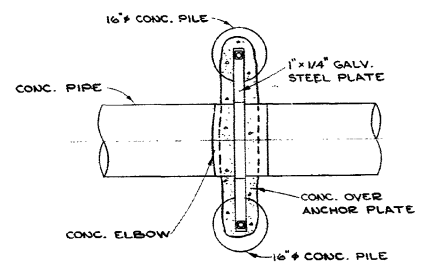


TYPICAL THRUST BLOCK DETAILS FOR 20" & 24" - 45° OR LESS CONC. ELBOWS  
SCALE: N.T.S.

**AS BUILT**  
D. S. *Walsh* NOV 26 1978  
SURVEY ENGINEERING DATE

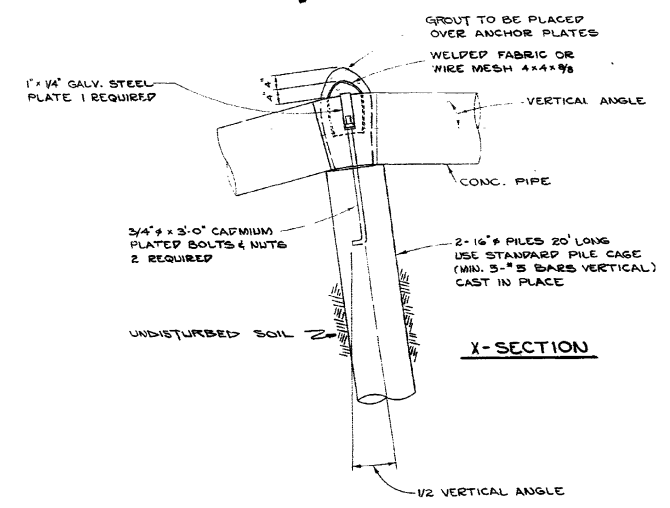


SECTION - A-A  
SCALE: 1/2" = 1'-0"



PLAN

TYPICAL THRUST BLOCK DETAIL FOR 20" & 24" VERTICAL CURVES  
SCALE: N.T.S.



X-SECTION

NO.	DESCRIPTION	DATE	BY
1	REVISED TO AS-BUILT	NOV. 26 1978	R.F.

REVISIONS	
FIELD BOOKS NO.	SURVEYED BY
LAND SURVEY PLANS NO.	DATE
B.M.	

**The City of Winnipeg**  
Waterworks, Waste and Disposal Division

Branch Operations (Waterworks)

SARGENT AV. FEEDERMAIN  
DETAILS OF EXISTING VALVE PIT AT SARGENT AV. & EMPRESS ST. AND DETAILS OF THRUST BLOCKS

DESIGNED BY <i>R.M. Girling</i>	DRAWN BY <i>R.M. Girling</i>
CHECKED BY <i>W.J.</i>	DATE AUG. 23/74
APPROVED BY <i>R.M. Girling</i>	
SCALE HOR. AS NOTED VERT. NOTED	DRAWING NO. D-1272

MICROFILMED

REFERENCE DRAWING ONLY