

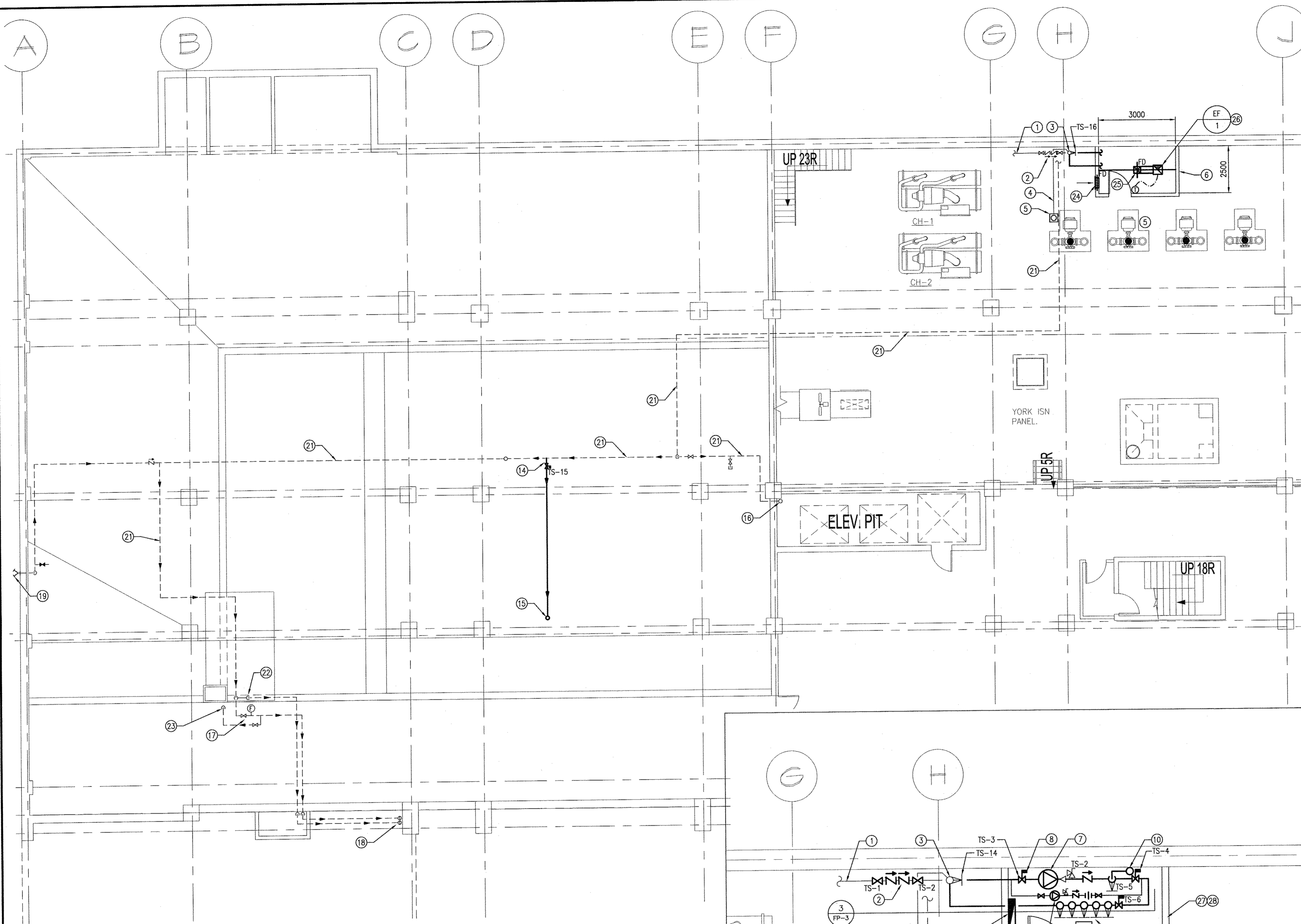
FILE NAME: 0717601-FP-1a.dwg

DATE:

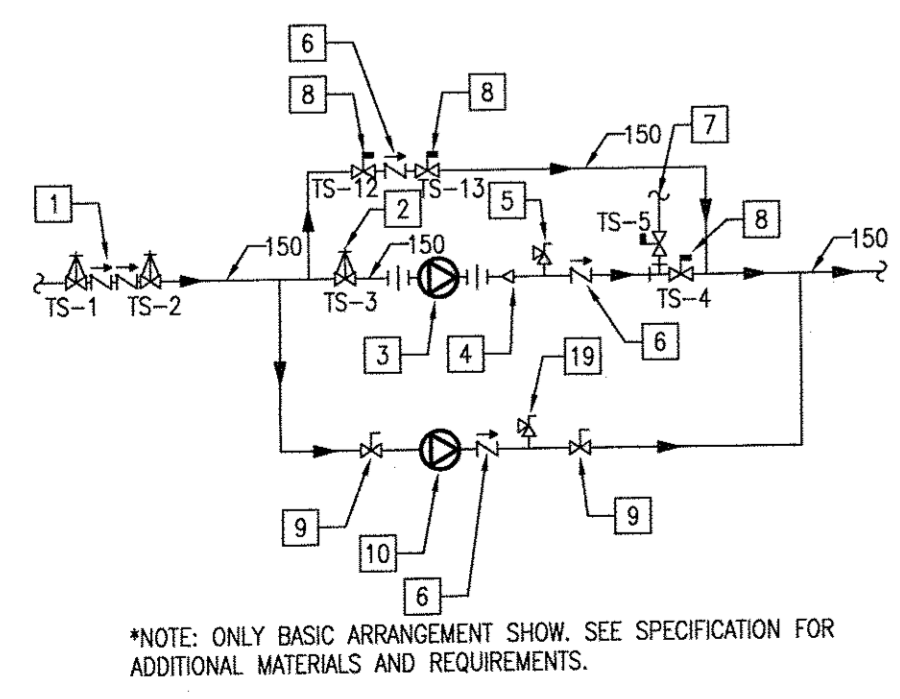
DESCRIPTION: SEVENTH FLOOR PLAN - HALON REPLACEMENT

PROJECT No: 07-176-02

ADDRESS: 510 MAIN STREET

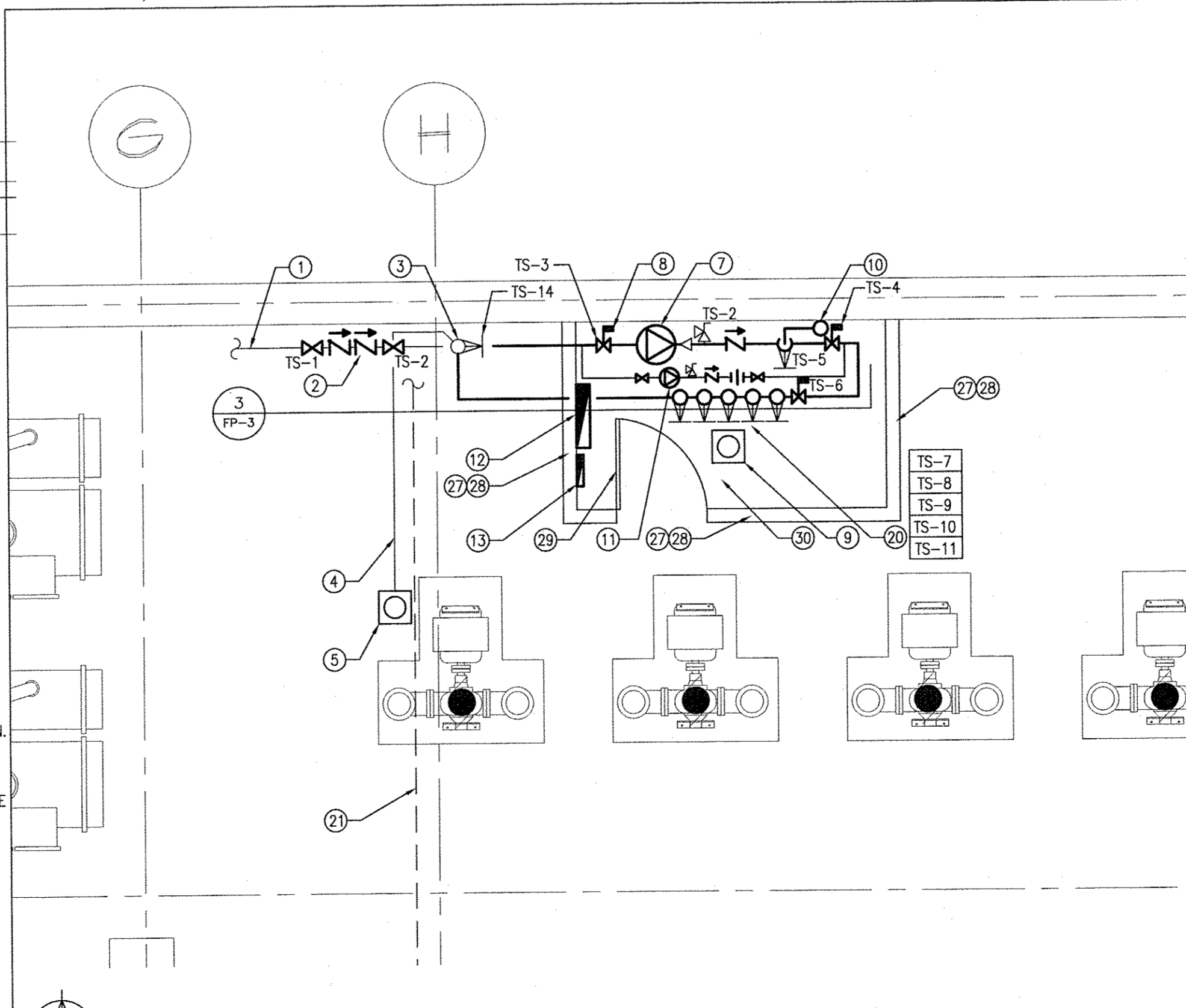


1 PART SUB-BASEMENT MECHANICAL ROOM PLAN - NEW FIRE PUMP
 SCALE: 1:100



3 FIRE PUMP LOOP SCHEMATIC
 SCALE: NTS

- SCHEMATIC NOTES**
- REPLACE EXISTING BACKFLOW PREVENTER WITH NEW DOUBLE CHECK BACKFLOW PREVENTER C/W O.S.&Y. GATE VALVES. MAINTAIN A MINIMUM OF 10 PIPE DIAMETERS FROM PUMP SUCTION FLANGE, PREFERRED DISTANCE IS 15'-0" FROM SUCTION FLANGE. GATE VALVES TO BE C/W TAMPER SWITCHES. WIRING BY ELECTRICAL DIVISION.
 - O.S.&Y. GATE VALVE C/W TAMPER SWITCH ON PUMP SUCTION. WIRING BY ELECTRICAL DIVISION.
 - FIRE PUMP C/W AUTO-AIR VENT, SUPPLY AND DISCHARGE PRESSURE GAUGES, ETC., WIRING BY ELECTRICAL DIVISION.
 - CONCENTRIC CONE REDUCER ON DISCHARGE OF PUMP.
 - 19mm RELIEF VALVE, PIPE OVER NEW FLOOR DRAIN IN FIRE PUMP ROOM.
 - 150mm RESILIENT SEATED SPRING CHECK VALVE.
 - 100mm INDICATING TYPE BUTTERFLY VALVE FOR TEST HEADER C/W INTEGRAL TAMPER SWITCH MONITORING CLOSED POSITION. WIRING BY ELECTRICAL DIVISION.
 - 150mm INDICATING TYPE BUTTERFLY VALVE C/W INTEGRAL TAMPER SWITCH. WIRING BY ELECTRICAL DIVISION.
 - LEVER TYPE BALL VALVE FOR JOCKEY PUMP ISOLATION.
 - JOCKEY PUMP, WIRING BY ELECTRICAL DIVISION.
 - RELIEF VALVE ON EXCESS PRESSURE PUMP DISCHARGE LINE.



2 PART SUB-BASEMENT MECHANICAL ROOM ENLARGE PLAN - NEW FIRE PUMP
 SCALE: 1:50

GENERAL NOTES

- ALL DIMENSIONS ARE TAKEN FROM FACE EXISTING WALL AND FACE OF GYPSUM BOARD.
- PAINT ALL NEW WALLS AND EXISTING WALL INSIDE FIRE PUMP ROOM.
- NEW DOOR AND FRAME TO BE PAINTED.
- WHERE NEW FIRE PUMP CAUSES PRESSURE IN EXCESS OF 175 PSI, PROVIDE PRV ZONE STATIONS AND/OR UPGRADE FITTINGS AS REQUIRED ON ALL NEW AND EXISTING SYSTEMS.

DRAWING NOTES

- EXISTING 150mm FIRE MAIN WATER SUPPLY.
- REMOVED EXISTING BACKFLOW PREVENTER AND PROVIDE NEW DOUBLE CHECK BACKFLOW PREVENTER C/W O.S.&Y. GATE VALVES WITH TAMPER SWITCHES. WIRING BY ELECTRICAL DIVISION. REFER TO SHEET NUMBER FP-3.
- EXISTING WET SPRINKLER STATION TO BE REMOVED. REFER TO SHEET NUMBER FP-3.
- EXISTING SPRINKLER DRAIN LINE RUNNING ABOVE FLOOR.
- EXISTING FLOOR DRAIN.
- NEW 1 HOUR FIRE RATING FIRE PUMP ROOM THIS LOCATION. REFER TO PART SUB-BASEMENT MECHANICAL ROOM ENLARGE PLAN ON THIS SHEET FOR FIRE PUMP LAYOUT. SEE NOTES 27, 28, 29 AND 30 FOR ARCHITECTURAL NOTES/CONSTRUCTION.
- NEW FIRE PUMP (FP-1) C/W ACCESSORIES AS SPECIFIED. REFER TO SPECIFICATION.
- CONNECT FIRE PUMP SUCTION LINE TO EXISTING FIRE MAIN WATER SUPPLY LINE AND PROVIDE ISOLATION VALVE C/W TAMPER SWITCH. WIRING BY ELECTRICAL DIVISION.
- CONNECT NEW FLOOR DRAIN TO NEAREST EXISTING DRAIN LINE. COORDINATE LOCATION WITH SPRINKLER CONTRACTOR.
- PIPE UP TO FIRE PUMP TEST HEADER.
- NEW JOCKEY PUMP (FP-2) C/W ACCESSORIES AS SPECIFIED. REFER TO SPECIFICATION.
- NEW FIRE PUMP CONTROLLER AS SPECIFIED. WIRING BY ELECTRICAL DIVISION.
- NEW JOCKEY PUMP CONTROLLER AS SPECIFIED. WIRING BY ELECTRICAL DIVISION.
- CONNECT NEW COMBINED SPRINKLER/FIRE MAIN TO EXISTING COMBINED SPRINKLER/FIRE STANDPIPE MAIN LINE AND PROVIDE ISOLATION VALVE WITH TAMPER SWITCH. WIRING BY ELECTRICAL DIVISION.
- NEW 150mm COMBINED FIRE STANDPIPE/SPRINKLER RISER UP TO 7TH FLOOR. PROVIDE 100mm CONTROL VALVE C/W CAPPED FOR FUTURE SPRINKLER CONNECTION AND ONE 65mm HOSE VALVE C/W CAP AND CHAIN ON EACH IMMEDIATE STAIR LANDING.
- EXISTING 150mm COMBINED FIRE STANDPIPE/SPRINKLER RISER.
- EXISTING CAFE ZONE CONTROL VALVE C/W FLOW SWITCH TO REMAIN.
- EXISTING SPRINKLER RISERS TO CAFE WET SPRINKLER SYSTEM AND CAFE WINDOW SPRINKLER SYSTEM TO REMAIN.
- EXISTING FIRE DEPARTMENT CONNECTION TO REMAIN. REMOVE AND REPLACE EXISTING LAMICOID IDENTIFYING ALL PARTIAL AREAS WHICH ARE SPRINKLERED. TO THE APPROVAL OF THE FIRE DEPARTMENT.
- ISOLATION VALVES WITH TAMPER SWITCHES CAPPED FOR FUTURE SPRINKLER SYSTEM AND FIRE HOSE VALVE CONNECTION. REFER TO SHEET NUMBER FP-3.
- EXISTING COMBINED SPRINKLER/STANDPIPE.
- EXISTING DELUGE VALVE C/W FLOW SWITCH.
- EXISTING SPRINKLER DRAIN WITH VALVE.
- PROVIDE 300mm x 450mm OPENING C/W EXPANDED METAL GRILLE. MINIMUM 50% FREE AREA AT LOW LEVEL.
- 300 x 300 DUCT UP TO ROOF OF ENCLOSURE AND PROVIDE 6mm BIRDSCREEN ON INTAKE.
- NEW EXHAUST FAN (EF-1) EQUIVALENT TO GREENHECK B50-90, 400 CFM @ 0.5" W.G. JHP (188 L/s @ 125 Pa) ON ENCLOSURE WITH 6mm BIRDSCREEN ON OUTLET. CONTROLLED BY SPACE THERMOSTAT.
- PROVIDE NEW ONE HOUR FIRE RATED PARTITION CONSISTS OF THE FOLLOWING: 16mm FIRE RATED GYPSUM BOARD, SOUND INSULATION, 152mm ST. STUDS (20 GAUGE) AT 400mm O.C., AND 16mm FIRE RATED GYPSUM BOARD. NOTE: PARTITION TO GO UP TO UNDERSIDE OF ONE HOUR FIRE RATED CEILING. PARTITION (3 SIDES) TO BE PAINTED INSIDE AND OUTSIDE OF THE ROOM.
- PROVIDE NEW RUBBER BASE FOR NEW PARTITIONS (INSIDE AND OUTSIDE OF THE NEW FIRE PUMP ROOM).
- PROVIDE NEW 1/2 HOUR RATED HOLLOW METAL DOOR AND FRAME INCLUDING 1/2 HOUR RATED HARDWARE:

3 EA HINGES 3031	4.5x4	652	IVE
1 EA PASSAGE SET	NDVUS RHO	626	SCH
1 EA CLOSE	4011 REG	689	LCN
1 EA KICKPLATE	8400-10"	630	IVE
1 EA WALL STOP	W540BCVX	626	IVE
1 EA SEAL	W-21	BLK	KNC
1 EA DOOR BOTTOM	CT-50	627	KNC
- PROVIDE NEW ONE HOUR FIRE RATED CEILING CONSISTS OF THE FOLLOWING: 16mm FIRE RATED GYPSUM BOARD, SOUND INSULATION, 152mm (20 GAUGE) AT 400mm O.C. AND 16mm FIRE RATED GYPSUM BOARD. NOTE: CEILING TO BE PAINTED INSIDE AND OUTSIDE OF THE ROOM. CEILING HEIGHT TO BE 3000mm FROM FINISH FLOOR TO UNDERSIDE OF GYPSUM BOARD. REFER TO FIRE PUMP ROOM SECTION.

NOTES:

1	ISSUED FOR BID OPPORTUNITY	SW	1/20/09
NO.	REVISION/DESCRIPTION	USER	DATE

SEALS



DRAWN BY	RRRNS	CHECKED BY	GO	APPROVED	VSW
DATE	2008.01.18	USER	APPROVAL		

CITY OF WINNIPEG
 PLANNING, PROPERTY &
 DEVELOPMENT DEPARTMENT
 CIVIC ACCOMMODATIONS DIVISION
 300 - 65 GARRY ST. R3C 4K4

PROJECT
 CITY OF WINNIPEG
 HALON SYSTEM REPLACEMENT
 510 MAIN STREET
 510 MAIN STREET

SHEET TITLE
 PART SUB-BASEMENT MECHANICAL ROOM
 PLAN - NEW FIRE PUMP



SMS Engineering Ltd. Consulting Engineers
 770 Bradford Street Winnipeg MB Canada R3H 0N3
 Telephone 204.775.0291 Fax 204.772.2153
 sms@smseng.com

SCALE	PROJECT NO.	SHEET NO.
1:100	07-176-02	FP-1

DRAWING SHEET SIZE: A1 (841mm x 594mm) PLOT 1:1