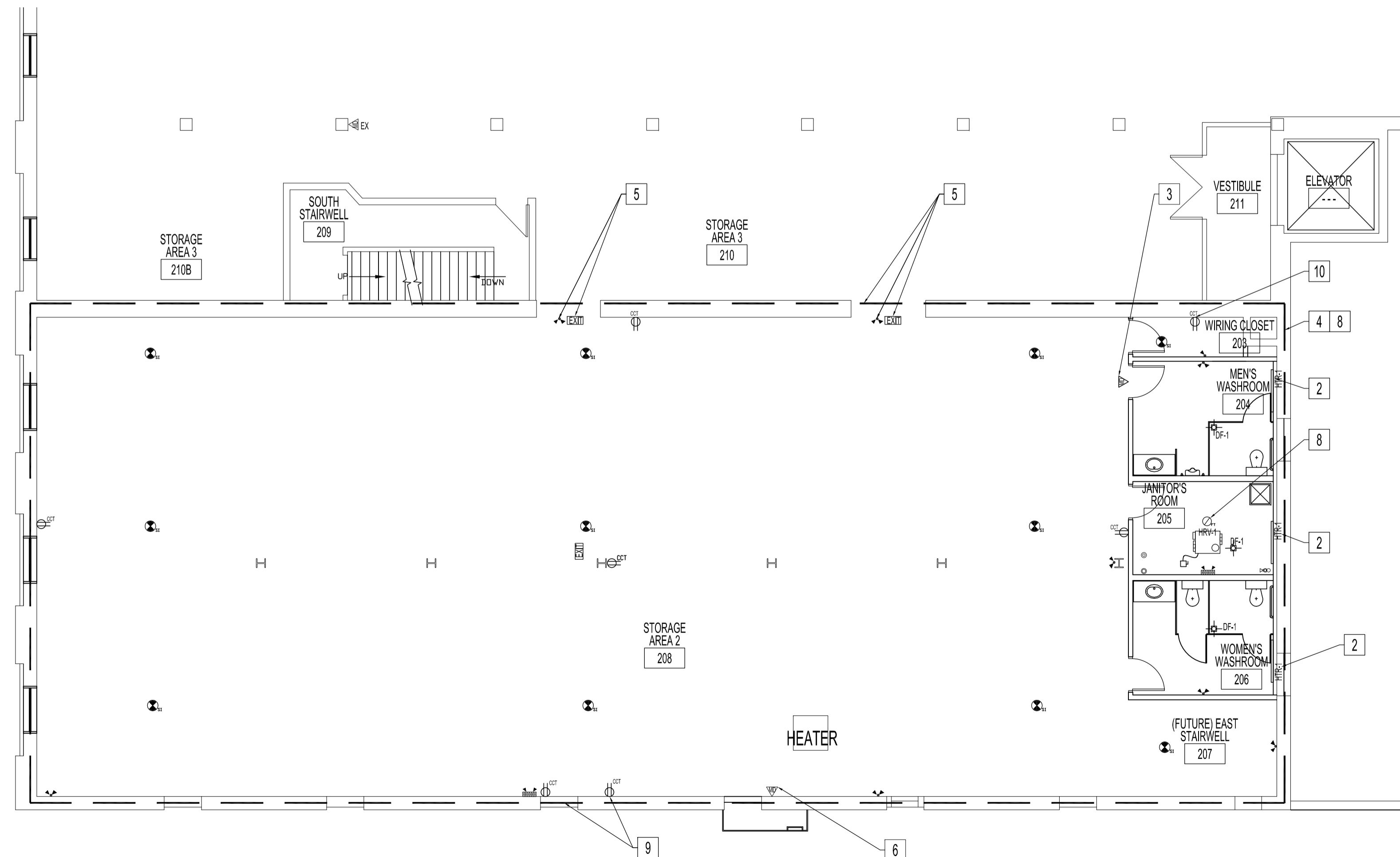


**PARTIAL MAIN FLOOR PLAN - RENOVATION**  
SCALE: 1/8"=1'-0"



**PARTIAL SECOND FLOOR PLAN - RENOVATION**  
SCALE: 1/8"=1'-0"

**RENOVATION NOTES:**  
ALSO SEE NOTES.

- 1 RELOCATE AS SHOWN.
- 2 SUPPLY & INSTALL ELECTRIC BASE BOARD HEATER. SEE HVAC SCHEDULE. POWER AVAILABLE IN ELECTRICAL PANEL LOCATED AT SOUTH-WEST INTERIOR BUILDING CORNER OF EACH FLOOR.
- 3 SUPPLY & INSTALL SECURITY MOTION HEAD ABOVE DOOR. TYPE TO BE SAME AS THIRD FLOOR SECURITY MOTION SENSOR INCLUDING MOUNTING HEIGHT. PROVIDE 1/2"EMT (MIN) FOR ALL NEW DEVICES.
- 4 SUPPLY & INSTALL EMERGENCY LIGHTING BATTERY UNIT, EMERGENCY DOUBLE HEADS, & EMERGENCY SINGLE HEAD AS SHOWN (DASHED LINE) IN LIGHT FIXTURE SCHEDULE IN LOCATIONS SHOWN. MOUNTING HEIGHTS TO BE SAME AS THIRD FLOOR WASHROOM 305 & JANITOR 307. PROVIDE 3/4"EMT (MIN) FOR ALL NEW DEVICES.
- 5 SUPPLY & INSTALL EMERGENCY EXIT SIGN & EMERGENCY DOUBLE HEADS AS SHOWN IN LIGHT FIXTURE SCHEDULE IN LOCATIONS SHOWN. MOUNTING HEIGHTS TO BE SAME AS THIRD FLOOR STORAGE 308. PROVIDE 3/4"EMT (MIN) FOR ALL NEW DEVICES.
- 6 CHECK & REPAIR (IF REQUIRE) EXISTING SECURITY MOTION SENSOR. RE-SECURE TO WALL INCLUDING WIRING. PROVIDE 1/2"EMT (MIN) FOR ALL NEW DEVICES.
- 7 SUPPLY & INSTALL HEAT RECOVERY VENTILATOR, HRV-1, AS SHOWN (SHEET M2) IN COMPLIANCE WITH MANUFACTURER'S INSTALLATION INSTRUCTIONS & MECHANICAL & ELECTRICAL SPECIFICATIONS. HRV-1 SHALL OPERATE CONTINUOUSLY ON LOW-SPEED. ANY LIGHT SWITCHES ENERGIZED FROM NEW WIRING CLOSETS, JANITOR'S ROOM, & WASHROOMS (FROM MAIN FLOOR & SECOND FLOOR) SHALL ACTIVATE HRV-1 TO HIGH-SPEED THEN TO LOW-SPEED WHEN LIGHT SWITCH(S) IS TURNED OFF. DIRECT DRAIN TO NEW FLOOR DRAIN. MOUNT DISCONNECT SWITCH ON CEILING. PROVIDE 1/2"EMT (MIN) FOR ALL NEW DEVICES.
- 8 SUPPLY & INSTALL SMOKE DETECTORS (ADDRESSABLE) & FIX TEMP SENSOR (ADDRESSABLE) & AS SHOWN IN LIGHT FIXTURE SCHEDULE IN LOCATIONS SHOWN. MOUNTING HEIGHTS TO BE SAME AS THIRD FLOOR STORAGE 309 AND JANITOR 305. PROVIDE 3/4"EMT (MIN) FOR ALL NEW DEVICES.
- 9 SUPPLY & INSTALL ELECTRICAL RECEPTACLES AS SHOWN IN DASHED LINE AREA. SUPPLY AND INSTALL SEPARATE 15A CIRCUIT FOR ELECTRICAL RECEPTACLES FOR EMERGENCY LIGHTING BATTERY UNIT AT 14" FROM CEILING. POWER AVAILABLE IN ELECTRICAL PANEL LOCATED AT SOUTH-WEST INTERIOR BUILDING CORNER OF EACH FLOOR.
- 10 SUPPLY & INSTALL DEDICATED 15A CIRCUIT. POWER AVAILABLE IN ELECTRICAL PANEL LOCATED AT SOUTH-WEST INTERIOR BUILDING CORNER OF EACH FLOOR.

**NOTES :**  
SEE SHEET E1 NOTES.

NO.	REVISION/DESCRIPTION	BY	DATE
1	MEN'S WASHROOM 111 - WATER CLOSET BESIDE LAVATORY WAS AN URINAL	DTA	2008-12-05

DRAWN BY	DATE	CHECKED BY	APPROVED
DTA	2008-12-01	USER	APPROVAL

**CITY OF WINNIPEG**  
PLANNING, PROPERTY AND DEVELOPMENT DEPARTMENT  
CIVIC ACCOMMODATIONS DIVISION  
300 - 65 GARRY ST. R3C 4K4

**PROJECT**  
SURPLUS STORAGE FACILITY  
MAIN & SECOND FLOOR RENOVATION

311 ROSS AVENUE

**SHEET TITLE**  
PARTIAL MAIN & SECOND FLOOR PLANS  
RENOVATION  
ELECTRICAL POWER AND SYSTEMS

SCALE	PROJECT NO.	SHEET NO.
AS SHOWN	2008-016-02	E2R1