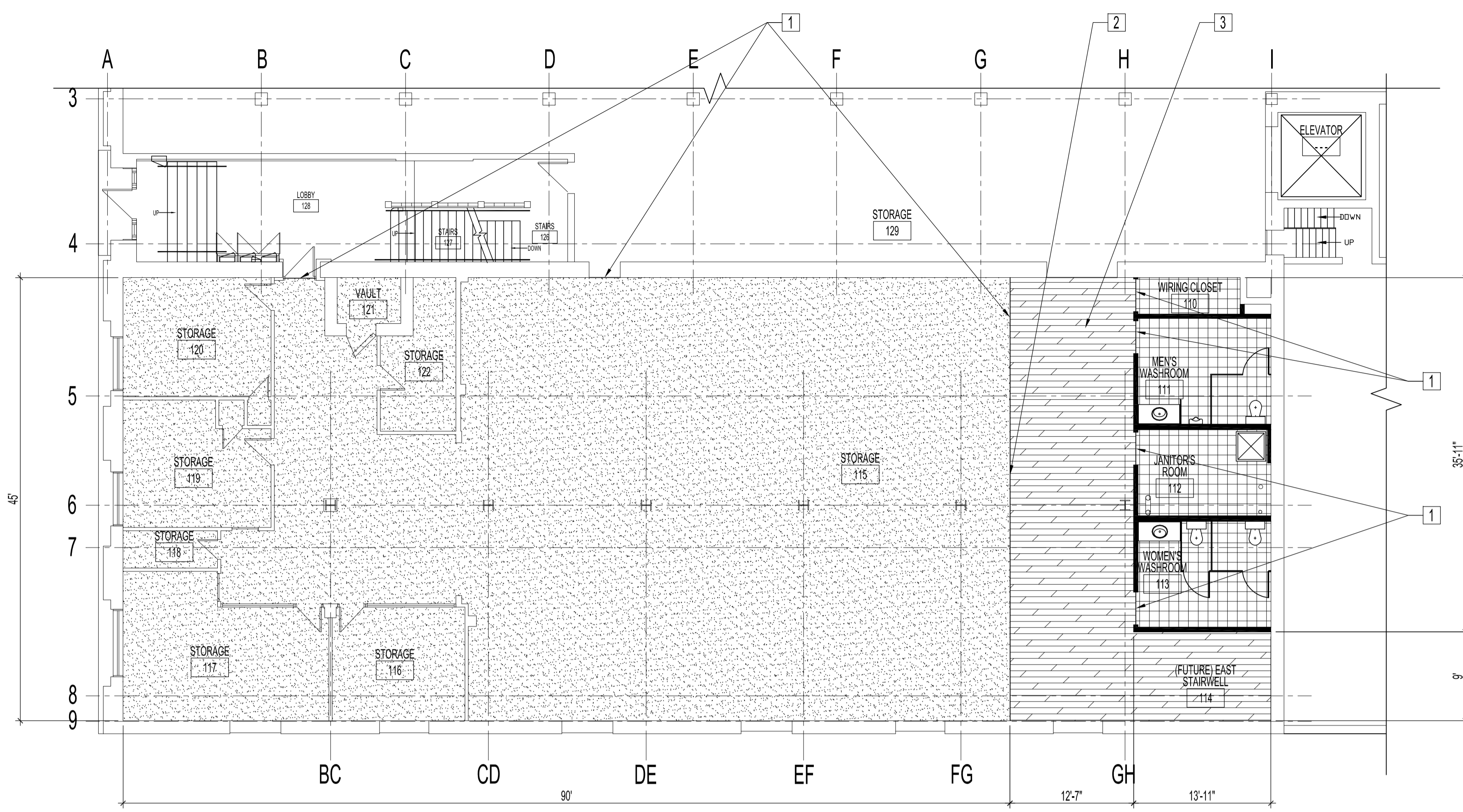
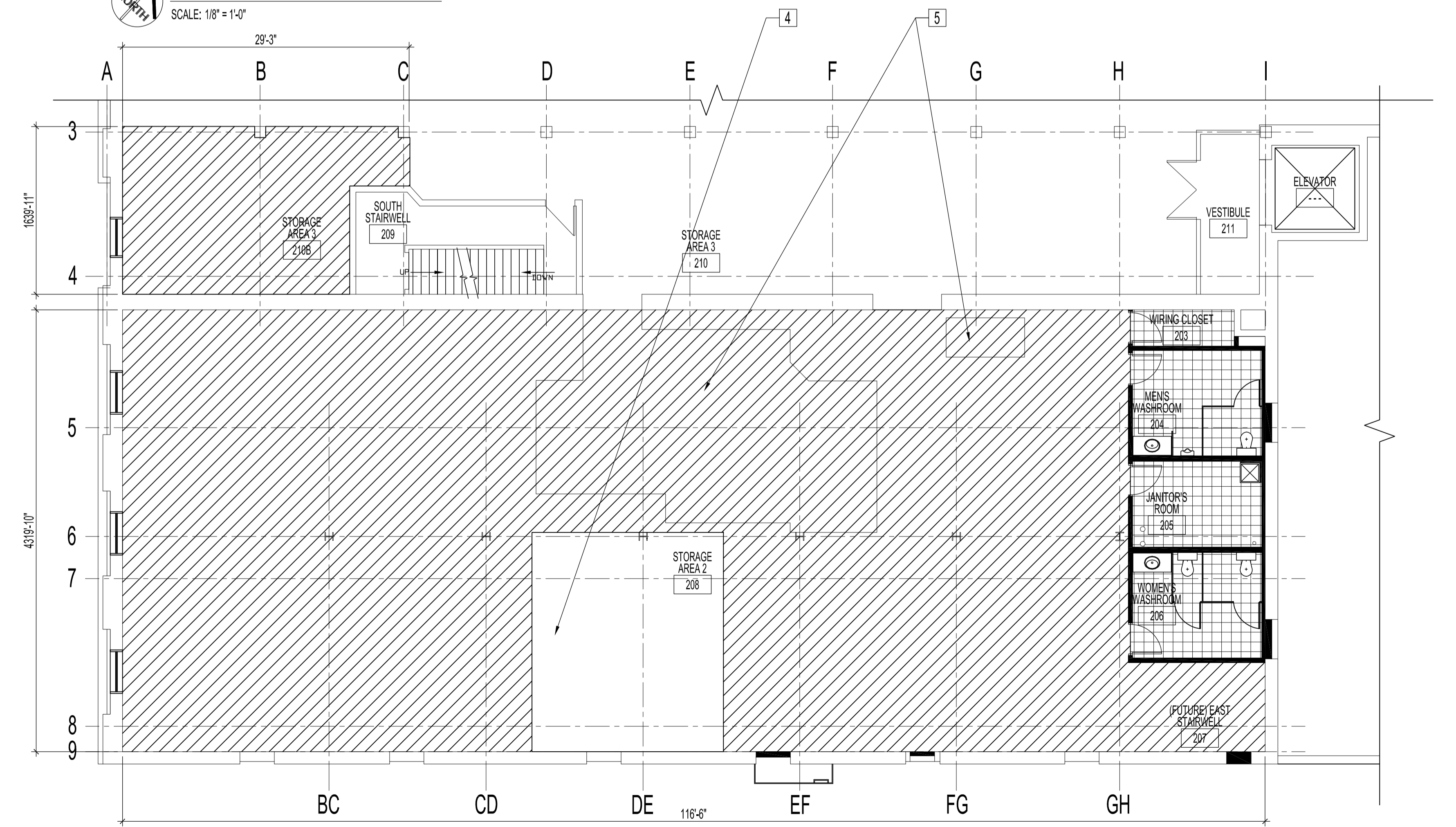


FILE NAME: 2008016-0210.dwg/A6
 DATE: 2008.11.25
 DESCRIPTION: PARTIAL MAIN & SECOND FLOOR PLANS - FLOOR FINISH
 PROJECT No: 2008-016-02
 ADDRESS: 311 ROSS AVENUE



PARTIAL MAIN FLOOR PLAN - FLOOR FINISH
 SCALE: 1/8" = 1'-0"



PARTIAL SECOND FLOOR PLAN - FLOOR FINISH
 SCALE: 1/8" = 1'-0"

NOTES :
 SEE SHEET A1 NOTES.

RENOVATION NOTES:

- 1 SUPPLY & INSTALL BLACK RUBBER TRANSITION STRIPS @ LOCATIONS WHERE FLOOR FINISHES CHANGE.
- 2 SUPPLY & INSTALL WOOD SHEATHING FOR A GRADUAL SLOPE @ UIS OF NEW CARPET TO HARDWOOD FLOORS. HEIGHT DIFFERENCE IS APPROXIMATELY 3/4".
- 3 FLOOR AREA TO HAVE HARDWOODS SANDED & PREPARED FOR NEW FINISH FROM REMOVED EDGE OF DEMOLISHED HARDWOODS TO NEW WALL CONSTRUCTION LOCATION OF WASHROOMS/ JANITOR ROOMS. APPROX. AREA IS 700 SQ. FT. FINISH FLOOR W/ 2 COATS SEMI-GLOSS ALKYD URETHANE FINISH. SEE DEMOLITION DWG.FOR LOCATION & DIMENSIONS.
- 4 EXISTING GLOSSY GREY FLOOR AREA TO REMAIN AS IS.
- 5 EXISTING STEEL FLOOR PLATES TO BE CLEANED FREE OF RUST & WASHED PRIOR TO PAINTING.

LEGEND

- LOCATION OF REFINISHED HARDWOOD FLOORS. SEE RENOVATION NOTE 3
- PAINT FLOOR W/ TWO COATS ALKYD GLOSS PAINT. PAINT TO MATCH EXISTING GREY COLOUR PAINT ON 2ND FLOOR.
- VINYL COMPOSITE TILE ON 1/4" PRO BOARD IN ALL ROOMS AS SHOWN. SEE ROOM FINISH SCHEDULE FOR GENERAL NOTES ON SHEET A7 FOR VCT COLOURS.
- CARPET & 4" CARPET BASE BY: KRAUS CARPETS -YORTON SR C0549 02 GREEN BAMBOO

ORIGINAL STAMPED BY: R.K.FOK LI Arch.
 DATE: 2008.12.02

NO.	REVISION/DESCRIPTION	BY	DATE
SEALS			

DRAWN BY: MKK
 CHECKED BY: USER APPROVAL
 DATE: 2008.11.25

CITY OF WINNIPEG
 PLANNING, PROPERTY AND
 DEVELOPMENT DEPARTMENT
 CIVIC ACCOMMODATIONS DIVISION
 300 - 65 GARRY ST. R3C 4K4

PROJECT
 SURPLUS STORAGE FACILITY
 MAIN & SECOND FLOOR RENOVATION

311 ROSS AVENUE

SHEET TITLE
 PARTIAL MAIN & SECOND FLOOR PLANS
 FLOOR FINISH

SCALE: AS SHOWN
 PROJECT NO: 2008-016-02
 SHEET NO: A6