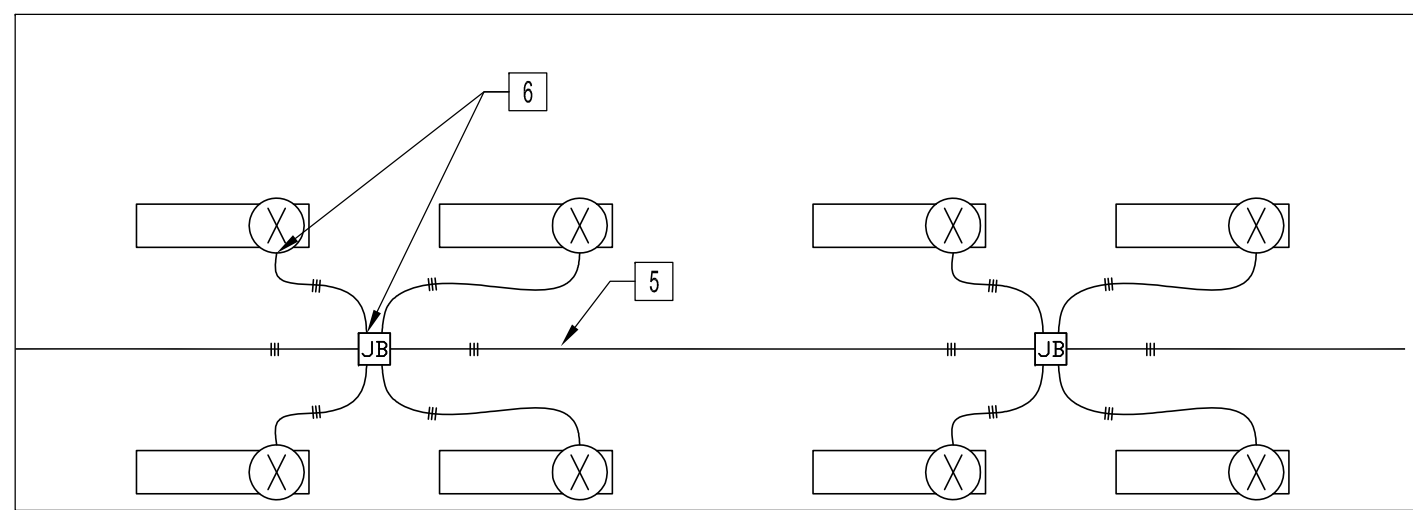
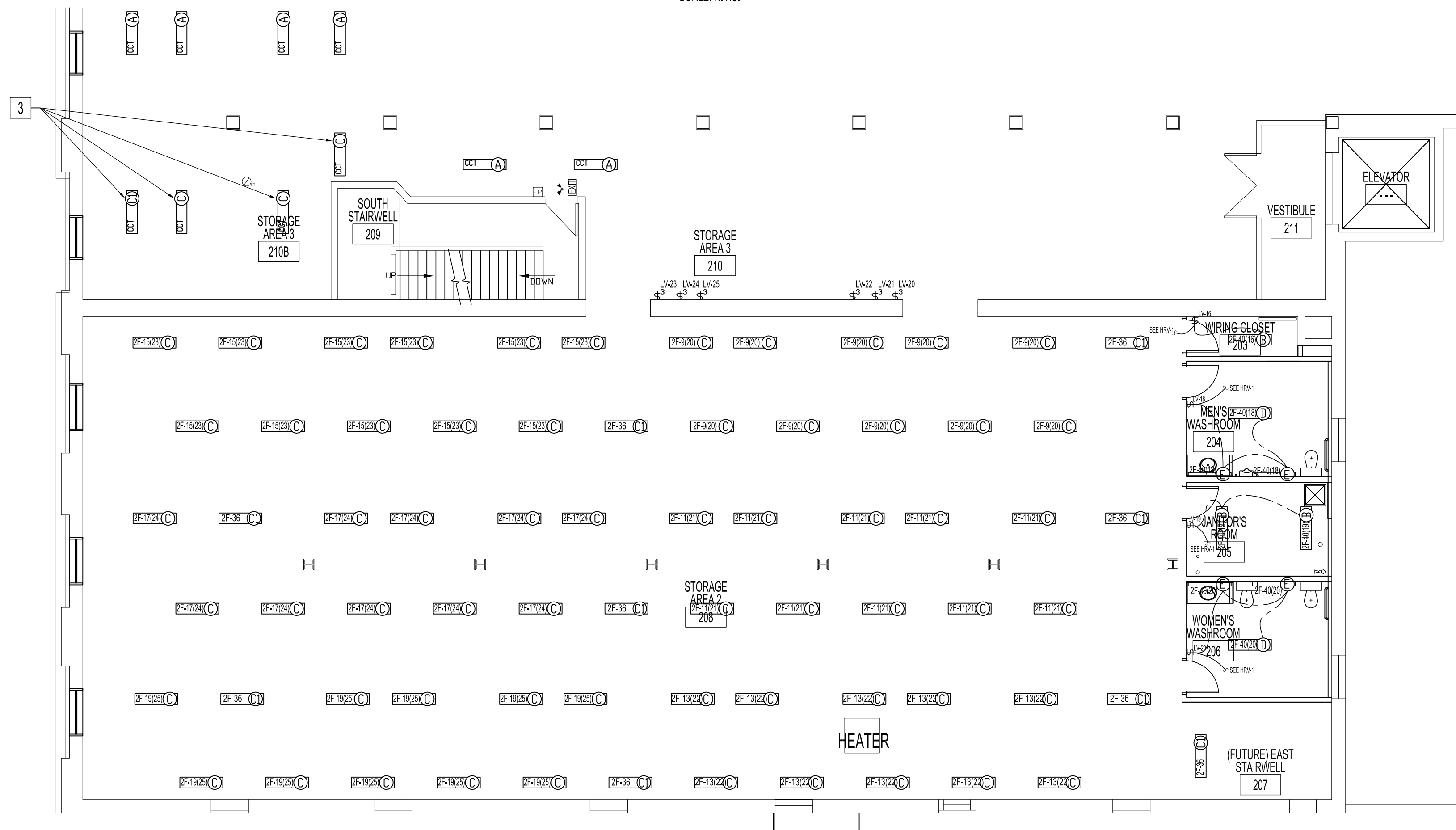


PARTIAL MAIN FLOOR PLAN - RENOVATION - LIGHTING LAYOUT
SCALE: 1/8"=1'-0"



TYPICAL FLOURESCENT FIXTURE WIRING
SCALE: N.T.S.



PARTIAL SECOND FLOOR PLAN - RENOVATION - LIGHTING LAYOUT
SCALE: 1/8"=1'-0"

LIGHT FIXTURE SCHEDULE			
TYPE	MANUFACTURER	CATALOGUE No.	LAMP DESCRIPTION
(A)			1'x4' FLUORESCENT, CHAIN MOUNT (EXIST)
(A1)			1'x4' FLUORESCENT, CHAIN MOUNT (EXIST NIGHT LIGHT)
(B)			1'x4' FLUORESCENT, CHAIN MOUNT (EXIST TO BE RELOCATED AS SHOWN)
(C)	LITHONIA	C-2-32-120-GE10IS-WGCSMR-HC	1'x4' FLUORESCENT, CHAIN MOUNT
(C1)	LITHONIA	C-2-32-120-GE10IS-WGCSMR-HC	1'x4' FLUORESCENT, CHAIN MOUNT (WIRE TO EXISTING NIGHT LIGHT CIRCUIT)
(D)	LITHONIA	C-2-32-120-GE10IS-HC	1'x4' FLUORESCENT, CHAIN MOUNT
(E)	LITHONIA	WP-2-32-120-GE10PS-CSA	1'x4' FLUORESCENT, CHAIN MOUNT
(F)	LUMACELL	MT224V9W	9W-24VDC EMERGENCY DOUBLE HEAD MICRO TUNGSTEN LAMP, ADJUSTABLE LENS, WHITE
(F1)	LUMACELL	MT124V9W	9W-24VDC EMERGENCY SINGLE HEAD MICRO TUNGSTEN LAMP, ADJUSTABLE LENS, WHITE
(F2)	LUMACELL	RG24S2882MT9WAT	9W-24VDC EMERGENCY LIGHTING BATTERY UNIT, 288W, 120V INPUT
(EX)	LUMACELL	LERLMCEU UNV C860	LED EXIT SIGN, SINGLE DOUBLE UNIVERSAL MOUNT

LEGEND	
TYPE	DESCRIPTION
(A)	1'x4' FLUORESCENT (EXIST)
(A1)	1'x4' FLUORESCENT (EXIST-NIGHT LIGHT)
(B)	1'x4' FLUORESCENT (EXIST-TO BE RELOCATED)
CL	CEILING LUMINAIRE
SP	SPRINKLER HEAD (NEW)
EX	EXIST - TO REMAIN
EXL	EXIT LIGHT W/DIRECTION
ER	ELECTRICAL RECEPTACLE
LS	LIGHT SWITCH, LOW VOLTAGE
ED	ELECTRICAL DISCONNECT
CR	CLOCK RECEPTACLE
EB	ELECTRIC BASE BOARD HEATER
UH	UNIT HEATER, NATURAL GAS, POWER VENTED
FB	FIRE ALARM BELL
FPM	FIRE ALARM MANUAL PULL STATION
FS	FIX TEMP SENSOR
EDL	EMERGENCY DOUBLE HEAD LAMP
ELB	EMERGENCY LIGHTING BATTERY UNIT
SD	SMOKE DETECTOR (ADDRESSABLE)
SM	SECURITY MOTION DETECTOR
EW	ELECTRIC WATER HEATER
DW	DOMESTIC COLD WATER
HW	DOMESTIC HOT WATER

PROVIDE CROUSE HINDS BALL ALINER & FIXTURE HANGER
PROVIDE SUPPORT BRACKET SUITABLE FOR 440 LBS PER FIXTURE.
ALL NEW LIGHTING FIXTURES AND BALLASTS TO BE POWER SMART APPROVED.
HANG LIGHTING FIXTURES TO SAME HEIGHT AS EXISTING ON THIRD FLOOR WASHROOMS 306 & 307, STORAGE 308, & JANITOR 305.

RENOVATION NOTES:
ALSO SEE NOTES.

- REWORK EXISTING LIGHT CIRCUIT FOR FUNCTION & COMPLIANCE WITH LATEST CANADIAN ELECTRICAL CODE.
- REWIRE TO EXISTING STORAGE 115, LIGHT SWITCH CIRCUIT/ RELAY, 2A-6(2).
- REWIRE TO EXISTING STORAGE AREA #3- 210, LIGHT SWITCH CIRCUIT/RELAY.
- RELOCATE EXISTING FLUORESCENT LIGHT FIXTURE AS SHOWN. REWIRE TO NEW INPUT SWITCH AS SHOWN IN RELAY SCHEDULE, RP 3-1, (3RD FLOOR)
- ALL EMT LIGHTING CONDUIT SHALL BE EQUALLY SPACED BETWEEN ROWS OF LIGHT FIXTURES AND RUN PARALLEL. SEE ELECTRICAL SPECIFICATION.
- CONNECTION FROM LIGHT FIXTURE TO CEILING MOUNTED JUNCTION BOX SHALL BE A SINGLE STEEL ARMORED CABLE (AC90), LIGHT FIXTURE TO LIGHT FIXTURE CONNECTION NOT ALLOWED.
- USE EXISTING LIGHTING RELAY PANEL, RP3-1, ON THIRD FLOOR. SPARE RELAYS ARE AVAILABLE IN PANEL. WIRE AS PER RELAY SCHEDULE RP 3-1 SHOWN ON THIS DRAWING.

RELAY SCHEDULE RP 3-1 - 3RD FLOOR

PANEL	RELAY OUTPUTS			LOCAL CONTACT INPUTS		
	CIRCUIT	RELAY	LOAD (W)	INPUT SWITCH	RELAYS CONTROLLED	LOCATION
2F	04	01	980	1	6,7	STORAGE AREA 301
2F	06	02	980	2	6,7	STORAGE AREA 301
2F	08	03	1050	3	1,2	STORAGE AREA 311
2F	10	04	980	4	3,4	STORAGE AREA 311
2F	12	05	1260	5	5	STORAGE AREA 311
2F	14	06	770	6	1,2	STORAGE AREA 311
2F	16	07	770	7	3,4	STORAGE AREA 311
2F	18	08	840	8	5	STORAGE AREA 311
2F	20	09	840	9	8,9,10	STORAGE AREA 311
2F	22	10	840	10	11,12,13	STORAGE AREA 311
2F	24	11	770	11	8,9,10	STORAGE AREA 311
2F	26	12	770	12	11,12,13	STORAGE AREA 311
2F	28	13	770	13	14	JANITOR
2F	30	14	140	14	15	WOMEN'S WASHROOM
2F	30	15	105	15	16	MEN'S WASHROOM
2F	30	16	105	16	17	WIRING CLOSET 203
2F	40	17	70	17	18	MEN'S WASHROOM 204
2F	40	18	105	18	19	JANITOR ROOM 205
2F	40	19	140	19	20	WOMEN'S WASHROOM 206
2F	40	20	105	20	21	STORAGE AREA 2, 208
2F	9	21	770	21	22	STORAGE AREA 2, 208
2F	11	22	770	22	23	STORAGE AREA 2, 208
2F	13	23	770	23	24	STORAGE AREA 2, 208
2F	15	24	840	24	25	STORAGE AREA 2, 208
2F	17	25	770	25	26	STORAGE AREA 2, 208
2F	19	26	770			STORAGE AREA 2, 208

EXISTING RELAY OUTPUTS & LOCAL CONTACT INPUTS FOR THIRD FLOOR

RELAY SCHEDULE RP 1-1 - MAIN FLOOR

PANEL	RELAY OUTPUTS			LOCAL CONTACT INPUTS		
	CIRCUIT	RELAY	LOAD (W)	INPUT SWITCH	RELAYS CONTROLLED	LOCATION
2A	04	01	635	1	2,3	STORAGE AREA 115
2A	06	02	1260	2	2,3	STORAGE AREA 115
2A	08	03	1190	3	2,3	STORAGE AREA 115
2A	10	04	840	4	7,6	STORAGE AREA 129
2A	12	05	1120	5	7,6	STORAGE AREA 129
2A	14	06	1050	6	5	STORAGE AREA 129
2A	16	07	910	7	4	STORAGE AREA 129
2A	18	08	70	8	7,6	STORAGE AREA 129
2A	18	09	105	9	5	STORAGE AREA 129
2A	18	10	140	10	4	STORAGE AREA 129
2A	18	11	105	11	1	LOBBY
		12		12	1	LOBBY
		13		13	8	WIRING CLOSET 110
		14		14	9	MEN'S WASHROOM 111
		15		15	10	JANITOR 112
		16		16	11	WOMEN'S WASHROOM 113

EXISTING RELAY OUTPUTS & LOCAL CONTACT INPUTS FOR MAIN FLOOR

NOTES :
THESE DRAWINGS SHALL NOT BE SCALED.
THE CONTRACTOR SHALL VISIT THE SITE AND SATISFY HIMSELF ALL DIMENSIONS, DATUM, AND DETAILED INFORMATION SHOWN ARE CORRECT.
THE CONTRACTOR IS TO REVIEW AND COORDINATE ALL ARCHITECTURAL, MECHANICAL, ELECTRICAL AND STRUCTURAL DRAWINGS & SPECIFICATIONS FOR OVERALL SCOPE OF WORK, INCLUDING ADDITIONAL OPENINGS THROUGH FLOORS, WALLS, AND CEILINGS FOR DUCT, PIPE & ELECTRICAL RISERS AND ALL OPENINGS NOT SHOWN ON DRAWINGS.
ALL EXISTING & NEW OPENINGS INCLUDING EXISTING ELECTRICAL & MECHANICAL COMPONENTS THROUGH FIRE ASSEMBLIES ARE TO BE FIRE STOPPED AND SEALED BY AN EXPERIENCED INSTALLER WHO IS CERTIFIED, LICENSED, OR OTHERWISE QUALIFIED BY THE FIRESTOPPING MANUFACTURER AS HAVING THE NECESSARY EXPERIENCE, STAFF AND TRAINING TO INSTALL MANUFACTURER'S PRODUCT PER SPECIFIED REQUIREMENTS. MATERIAL SHALL BE UL APPROVED FIRE STOPPING TO MAINTAIN THE INTEGRITY OF THE FIRE SEPARATION, AND PROVIDE A SMOKE-TIGHT BARRIER.
RELOCATE &/OR RE-ROUTE &/OR REMOVE ALL EXISTING SURFACE MOUNTED &/OR RECESS ELECTRICAL, WIRING, CABLES, CONDUIT, JUNCTION BOXES TO ACCOMMODATE NEW COMPONENTS SHOWN. ALL NEW WIRING, CONDUITS & COMPONENTS SHALL BE CONCEALED IN WALL OR CEILING AND SHALL BE NEATLY ROUTED ALONG BUILDING STRUCTURES.
ALL PRODUCTS AND MATERIALS TO BE USED AND INSTALLED SHALL CONFORM WITH MANUFACTURER'S SPECIFICATIONS & APPLICABLE CODES.
THE CONTRACTOR SHALL BE RESPONSIBLE TO PATCH AND MAKE GOOD ALL EXISTING CONSTRUCTION AFFECTED BY THE REMOVAL OF ALL ITEMS FORMING THE PART OF THE RENOVATION WORK.
SUPPLY & INSTALL DISCONNECT SWITCHES, CIRCUIT BREAKERS AND WIRING ACCORDING TO FINAL NAMEPLATES OF THE MECHANICAL EQUIPMENT AT NO-COST.
SUPPLY & INSTALL RELAY COMPONENTS TO SUIT EXISTING RELAY PANELS FOR A FULLY FUNCTIONING SYSTEM.

ELECTRICAL DRAWING LIST	
SHEET No.	SHEET TITLE
E1	PARTIAL MAIN & SECOND FLOOR PLANS - RENOVATION ELECTRICAL LIGHTING
E2	PARTIAL MAIN & SECOND FLOOR PLANS - RENOVATION ELECTRICAL POWER & SYSTEMS
E3	ELECTRICAL SPECIFICATIONS

NO.	REVISION/DESCRIPTION	BY	DATE
SEALS			

DRAWN BY	DATE	CHECKED BY	DATE	APPROVED
DTA	2008.12.01	USER APPROVAL		

CITY OF WINNIPEG
PLANNING, PROPERTY AND DEVELOPMENT DEPARTMENT
CIVIC ACCOMMODATIONS DIVISION
300 - 65 GARRY ST. R3C 4K4

PROJECT
SURPLUS STORAGE FACILITY
MAIN & SECOND FLOOR RENOVATION

311 ROSS AVENUE
SHEET TITLE
PARTIAL MAIN & SECOND FLOOR PLANS
RENOVATION
ELECTRICAL LIGHTING

SCALE	PROJECT No.	SHEET No.
AS SHOWN	2008-016-02	E1