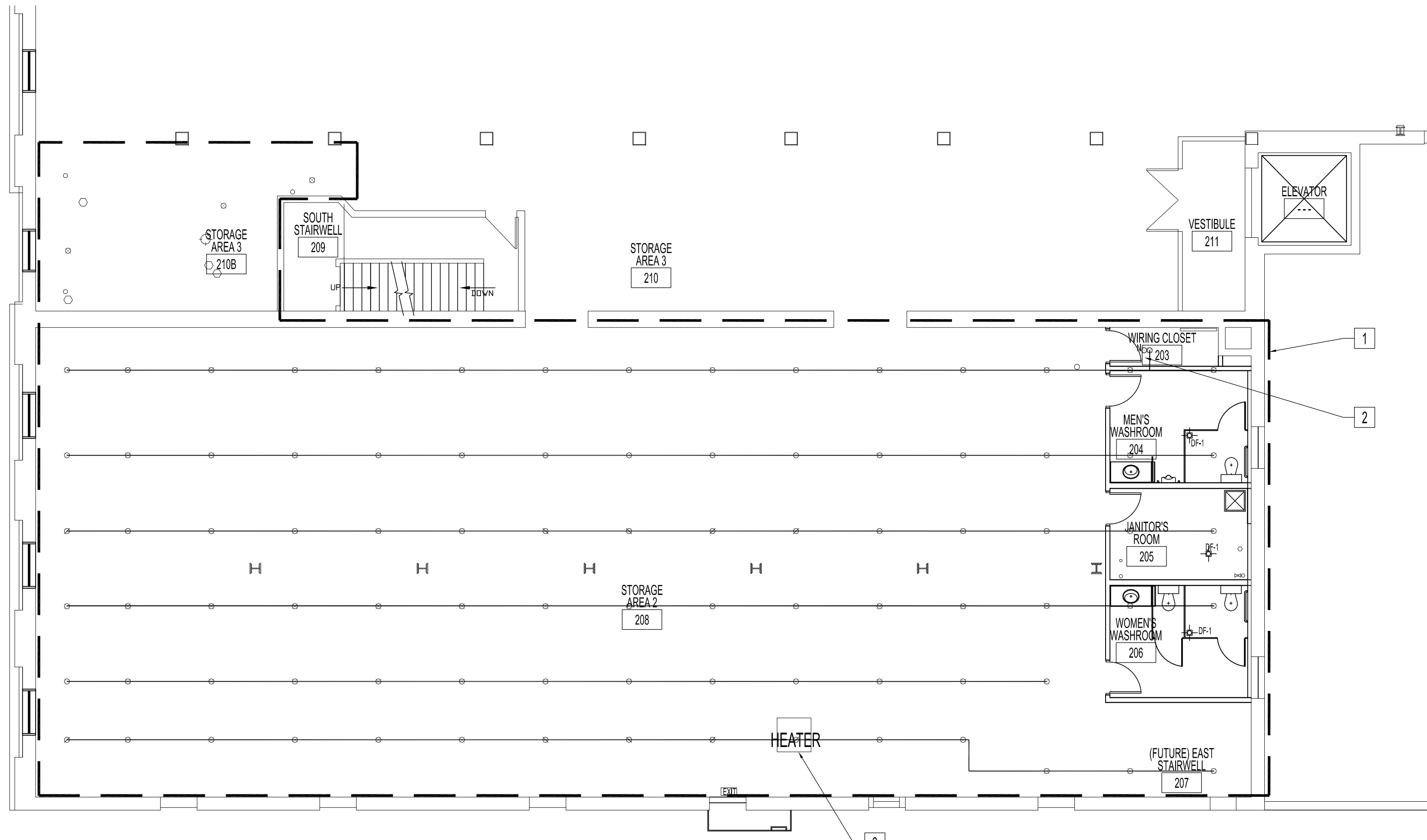


**PARTIAL MAIN FLOOR PLAN - RENOVATION**  
 SCALE: 1/8"=1'-0"



**PARTIAL SECOND FLOOR PLAN - RENOVATION**  
 PARTIAL LAYOUT OF FIRE SPRINKLER SYSTEM SHOWN. CONTRACTOR TO SITE INVESTIGATE TRUE SITE CONDITION.  
 SCALE: 1/8"=1'-0"

**HVAC SCHEDULE**  
 (SUPPLY & INSTALL, SEE MECH & ELEC SPECS))

SYMBOL	DESCRIPTION	REMARK
	HEAT RECOVERY VENTILATOR W/ FIFTH PORT RECIRCULATE DEFROST, FANTECH MODEL SHR 320GRD, 115V/2.5A	
	ELECTRIC BASEBOARD HEATER W/ INTEGRAL THERMOSTAT, 1000W, 240/208V, STELCO MODEL NV10V2	

**GRILLE SCHEDULE**  
 (SUPPLY & INSTALL, SEE MECH & ELEC SPECS))

SYMBOL	DESCRIPTION	REMARK
	TYPE "A" DENOTES TYPE OF GRILLE OR DIFFUSER "?X" DENOTES SIZE OF GRILLE OR DIFFUSER (INCHES) "EXH" DENOTES EXHAUST OR AIR VOLUME IN CFM	
A	SURFACE MOUNT EGG GRATE FACE RETURN, 2" x 2" ALUMINUM GRID CORE W/ EXTRUDED ALUMINUM 1-1/4" BORDERS & FRAME, PRICE 80/F/A	
B	ALUMINUM LOUVERED FACE SUPPLY, SINGLE DEFLECTION, 3/8" BLADE SPACING, PRICE 610/F/L/A	
	RETURN AIR GRILLE	
	SUPPLY AIR LOUVER, WALL MOUNT	
	ROUND FIRE DAMPER, W/ SINGLE RETAINER PLATE GREENHECK FDR-510	

NOTES :  
 SEE SHEET ME1 NOTES.

**RENOVATION NOTES:**

- 1 RELOCATE & TEST (REPAIR FIRE PROTECTION LINES & SPRINKLER HEADS (DASHED LINE AREA) IN NEW ROOMS & ADJACENT AREAS TO COMPLY WITH LATEST NFPA CODE REQUIREMENTS.
- 2 SUPPLY & INSTALL NEW SPRINKLER TAKE-OFF PIPES AND SPRINKLER HEADS TO NEW WIRING CLOSETS 110 & 203 TO COMPLY WITH LATEST NFPA CODE REQUIREMENTS.
- 3 CHECK & CLEAN UNIT HEATER TO ENSURE PROPER OPERATION, INCLUDING FLUE. REPAIR IF REQUIRE.

NO.	REVISION/DESCRIPTION	BY	DATE
SEALS			

DRAWN BY	DATE	CHECKED BY	APPROVED
DTA	2008.12.01	USER APPROVAL	

**CITY OF WINNIPEG**  
 PLANNING, PROPERTY AND  
 DEVELOPMENT DEPARTMENT  
 CIVIC ACCOMMODATIONS DIVISION  
 300 - 65 GARRY ST. R3C 4K4

PROJECT  
 SURPLUS STORAGE FACILITY  
 MAIN & SECOND FLOOR RENOVATION

311 ROSS AVENUE  
 SHEET TITLE

PARTIAL MAIN & SECOND FLOOR PLANS  
 RENOVATION  
 MECHANICAL

SCALE	PROJECT NO.	SHEET NO.
AS SHOWN	2008-016-02	M1