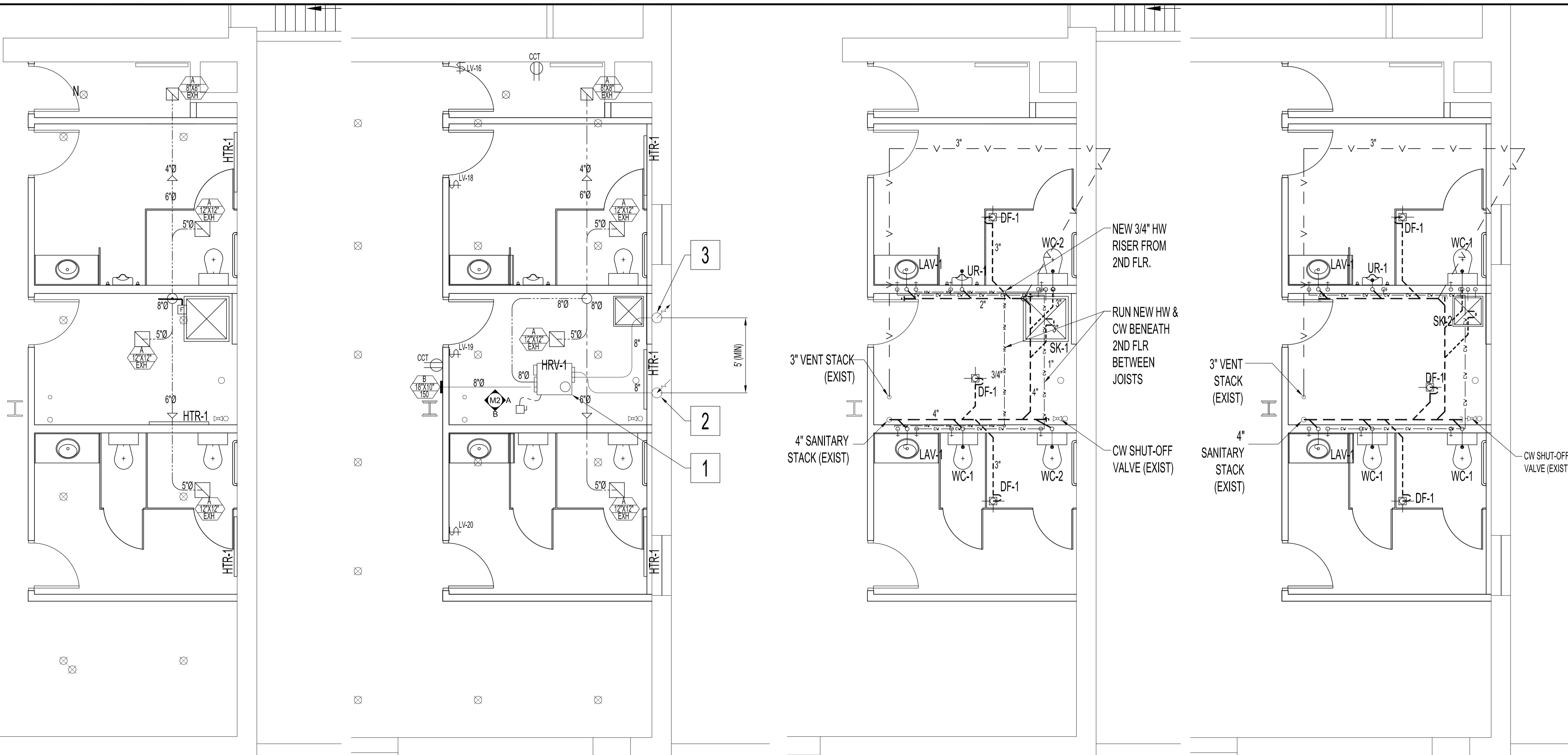


NOTES :
SEE SHEET ME1 NOTES.

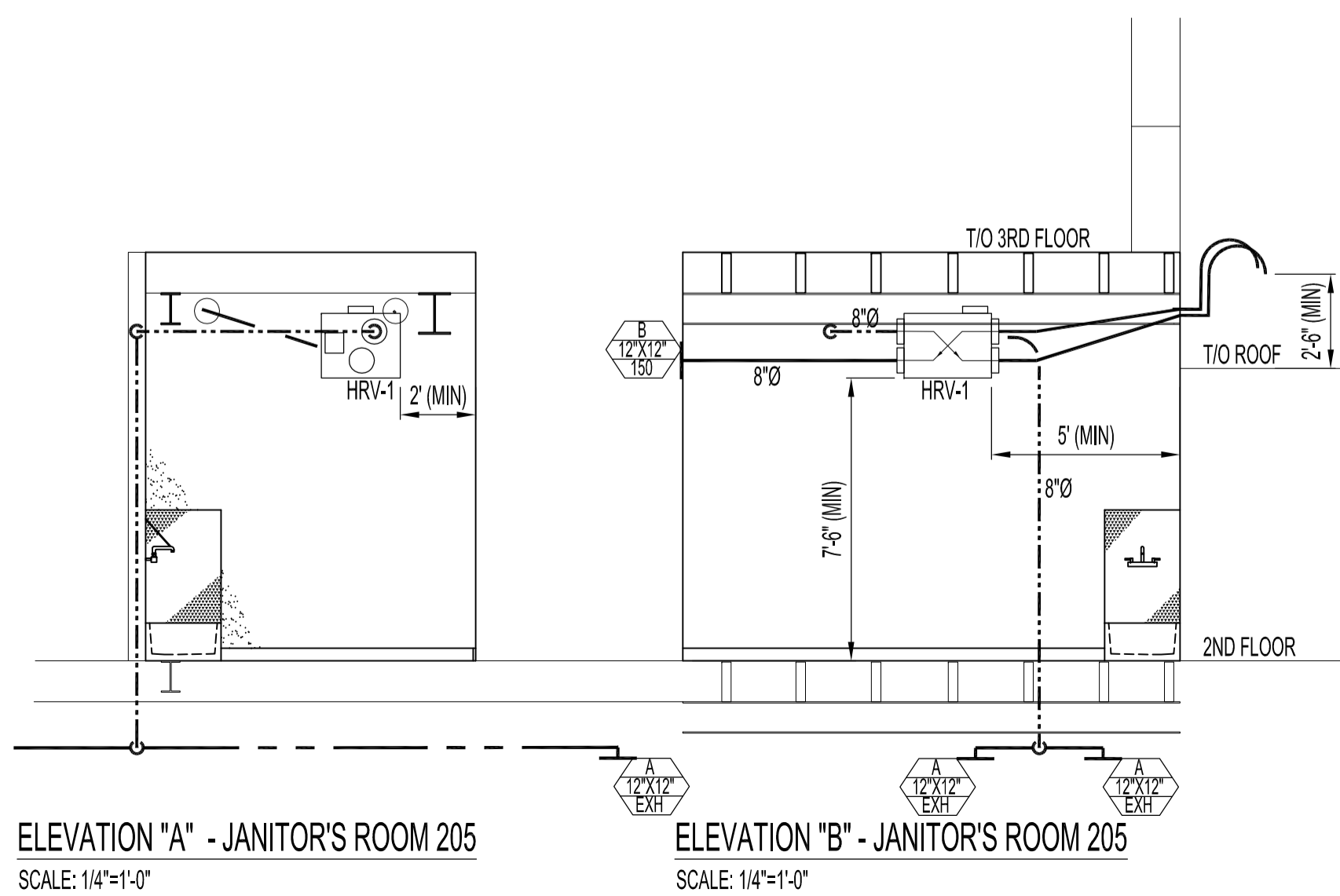


PARTIAL MAIN FLOOR PLAN - RENOVATION
SCALE: 1/4"=1'-0"

PARTIAL SECOND FLOOR PLAN - RENOVATION
SCALE: 1/4"=1'-0"

PARTIAL MAIN FLOOR PLAN - PLUMBING RENOVATION
SCALE: 1/4"=1'-0"

PARTIAL SECOND FLOOR PLAN - PLUMBING RENOVATION
SCALE: 1/4"=1'-0"



ELEVATION "A" - JANITOR'S ROOM 205
SCALE: 1/4"=1'-0"

ELEVATION "B" - JANITOR'S ROOM 205
SCALE: 1/4"=1'-0"

PLUMBING SCHEDULE (SUPPLY & INSTALL)			
TAG	TYPE	DESCRIPTION	REMARK
WC-1		CAROMA, CARAVELLE 270, DUAL FLUSH (6/3) LITRES, VITREOUS CHINA, CW TOILET SEAT, RAISED PUSH-BUTTON OPTION, CAROMA SCREWFIXING KIT CODE No.601150, COLOR: WHITE, CLOSET SUPPLIES.DELTA 47T1316SD.	
WC-2		CAROMA, CARAVELLE 270 ADA, DUAL FLUSH (6/3) LITRES, VITREOUS CHINA, CW TOILET SEAT, RAISED PUSH-BUTTON OPTION, CAROMA SCREWFIXING KIT CODE No.601150, COLOR: WHITE, CLOSET SUPPLIES.DELTA 47T1316SD.	
UR-1		AMERICAN STANDARD WASHBROOK #6501.010 LOW CONSUMPTION URINAL, WALL HUNG FOR FLUSH VALVE, VITREOUS CHINA, WASH OUT FLUSH ACTION 0.84 GAL. (3.8L) FLUSH, EXTENDED SIDES FOR PRIVACY, INTEGRAL FLUSH SPREADER, 3/4" (19MM) TOP SPUD, WALL HANGERS, OPEN TRAP, #407068-0070A STRAINER, REMOVABLE STAINLESS STEEL, 2" (50MM) OUTLET, CONNECTING FLANGE WITH GASKET AND BOLTS, SLOAN REGAL #186-1XL FLUSH VALVE, C.P. LOW CONSUMPTION, FACTORY SET FLOW, QUIET ACTION DIAPHRAGM TYPE WITH NON-HOLD OPEN FEATURE, VACUUM BREAKER AND BACK-CHECK ANGLE STOP, SMITH SERIES #504-1619 URINAL WALL ACCESS CLEANOUT, WITH ROUND STAINLESS STEEL FACE AND V.P. SCREW, SMITH SERIES #0637 CARRIER, WITH STEEL PIPE LEGS, BLOCK BASE FEET SUPPORTS AND BEARING PLATES.	
LAV-1		AMERICAN STANDARD CADET UNIVERSAL ACCESS #9494.001 BASIN, 4" CENTERS, 21" X 17-1/2" X 5-1/4" - 6-7/8" DEEP, COUNTER MOUNTED, VITREOUS CHINA, REAR OVERFLOW, SELF-RIMMING WITH SEALANT, SYMONS #5-204-ST FAUCET, C.P. 4" C.C. BRASS LEAD-FREE WATERWAYS BODY, CERAMIC DISC VALVE CARTRIDGE, WITH 1.84 GPM FLOW AERATOR OUTLET, SINGLE CONTROL METAL LEVER HANDLE, AND 3/8" SUPPLY TUBES, MCGUIRE #155WC DRAIN, C.P. OFFSET OPEN GRID, MCGUIRE #1708V/RB SUPPLIES, C.P., POLISHED, SHORT RIGID HORIZONTAL INTEGRAL SWEAT TUBES WITH V.P. COMBINATION WHEEL HANDLE/LOOSE KEY BALL VALVE ANGLE STOPS, AND ESCUTCHEONS, LESS BRAIDED FLEXIBLE RISERS, MCGUIRE #8872C-17T P TRAP, C.P. 17 GAUGE, 1-1/4" AND ESCUTCHEON, ATS SPEC #BF-1 SANITARY SAFETY-COVERS TO EXPOSED PIPING AS PER LOCAL CODES.	
SK-1		STERM-WILLIAMS MODEL HL-2010 MOP SERVICE BASIN, 36" X 36" X 12" DEEP, 6" FRONT DROP W/STAINLESS STEEL CAP ALL SIDES, DRAIN SHALL BE CAST BRASS WITH STAINLESS STEEL STRAINER CAST INTEGRAL AND SHALL PROVIDE FOR A CALKED LEAD CONNECTION NOT LESS THAN 1" DEEP TO A 3" PIPE, RECEPTOR COMPOSED OF PEARL, GRAY MARBLE CHIPS AND WHITE PORTLAND CEMENT GROUND SMOOTH, GROUTED AND SEALED TO RESISTED STAINS, STAINLESS STEEL CAP OF ONE-PIECE 20 GA. 302 STAINLESS STEEL INTEGRAL ON THRESHOLD, STERN-WILLIAMS #7-10-VB FAUCET, C.P. 8" C.C. WALL MOUNTED, SOLID CAST BRASS BODY, WITH CAST METAL HANDLES, VACUUM BREAKER, INTEGRAL STOPS, #T-35 S.S. BRACKET, 3/8" HOSE WITH C.P. COUPLING, #T-40 S.S. MOP (TRIPLE) HANGER, P TRAP, 3".	

PLUMBING SCHEDULE (SUPPLY & INSTALL)			
TAG	TYPE	DESCRIPTION	REMARK
SK-2		STERM-WILLIAMS #HTB-2424 MOP SNK, 24" X 24" X 10" DEEP, FLOOR MOUNTED, PRECAST TERRAZZO AND INTEGRAL DRAIN WITH STRAINER, STERN-WILLIAMS #7-10-VB FAUCET, C.P. 8" C.C. WALL MOUNTED, SOLID CAST BRASS BODY, WITH CAST METAL HANDLES, VACUUM BREAKER, INTEGRAL STOPS, #T-35 S.S. BRACKET, 3/8" HOSE WITH C.P. COUPLING, #T-40 S.S. MOP (TRIPLE) HANGER, P TRAP, 3".	
DF-1		SMITH SERIES 205A FLOOR DRAIN, ALL DUCCO COATED CAST IRON BODY, REVERSIBLE FLASHING CLAMP WITH SEEPAGE OPENINGS AND ADJUSTABLE 5" DIAMETER NICKEL BRONZE 1/4" THICK STRAINER, SECURED WITH S.S. SCREWS, 4" THROAT ON STRAINER, IN QUARRY OR MOSAIC TILED AREAS, PROVIDE 3" - 5" X 5" SQUARE NICKEL BRONZE STRAINER, (WHERE REQUIRED BY LOCAL CODE PROVIDE TRAP PRIMER CONNECTION P.)	

MECHANICAL/PLUMBING RENOVATION NOTES:

- SUPPLY & INSTALL HEAT RECOVERY VENTILATOR, HRV-1, AS SHOWN IN COMPLIANCE WITH MANUFACTURER'S INSTALLATION INSTRUCTIONS & MECHANICAL & ELECTRICAL SPECIFICATIONS. HRV-1 SHALL OPERATE CONTINUOUSLY ON LOW-SPEED, ANY LIGHT SWITCHES ENERGIZED FROM NEW WIRING CLOSETS, JANITOR'S ROOM, & WASHROOMS SHALL ACTIVATE HRV-1 TO HIGH-SPEED THEN TO LOW-SPEED WHEN LIGHT SWITCH IS TURNED OFF. DIRECT DRAIN TO NEW FLOOR DRAIN, MOUNT DISCONNECT SWITCH ON CEILING, SUPPLY & INSTALL FIRE DAMPER (SEE GRILLE SCHEDULE) AT FLOOR PENETRATION.
- SUPPLY & INSTALL INSULATED 8" DIAMETER RIGID GALVANIZED DUCT FROM HRV-1 TO EXTERIOR WALL. SUPPLY & INSTALL 8" DIAMETER RIGID GALVANIZED GOOSE NECK DUCT WITH BIRD SCREEN FOR NEW 8" DIAMETER INTAKE. INTAKE OPENING SHALL BE 30 INCH (MINIMUM) FROM TOP OF FINISH ROOF & 5 FEET (MINIMUM) FROM HRV-1 EXHAUST, AS SHOWN.
- SUPPLY & INSTALL INSULATED 8" DIAMETER RIGID GALVANIZED DUCT FROM HRV-1 TO EXTERIOR WALL. SUPPLY & INSTALL 8" DIAMETER RIGID GALVANIZED GOOSE NECK DUCT WITH BACKDRAFT DAMPER FOR NEW 8" DIAMETER EXHAUST, EXHAUST OPENING SHALL BE 30 INCH (MINIMUM) FROM TOP OF FINISH ROOF, AS SHOWN.

NO.	REVISION/DESCRIPTION	BY	DATE
SEALS			

DRAWN BY	DATE	CHECKED BY	APPROVED
DTA	2008.12.01	USER APPROVAL	

CITY OF WINNIPEG
PLANNING, PROPERTY AND
DEVELOPMENT DEPARTMENT
CIVIC ACCOMMODATIONS DIVISION
300 - 65 GARRY ST. R3C 4K4

PROJECT
SURPLUS STORAGE FACILITY
MAIN & SECOND FLOOR RENOVATION

311 ROSS AVENUE

SHEET TITLE
PARTIAL FLOOR PLANS & ELEVATIONS
RENOVATION
MECHANICAL/PLUMBING

SCALE	PROJECT NO.	SHEET NO.
AS SHOWN	2008-016-02	M2