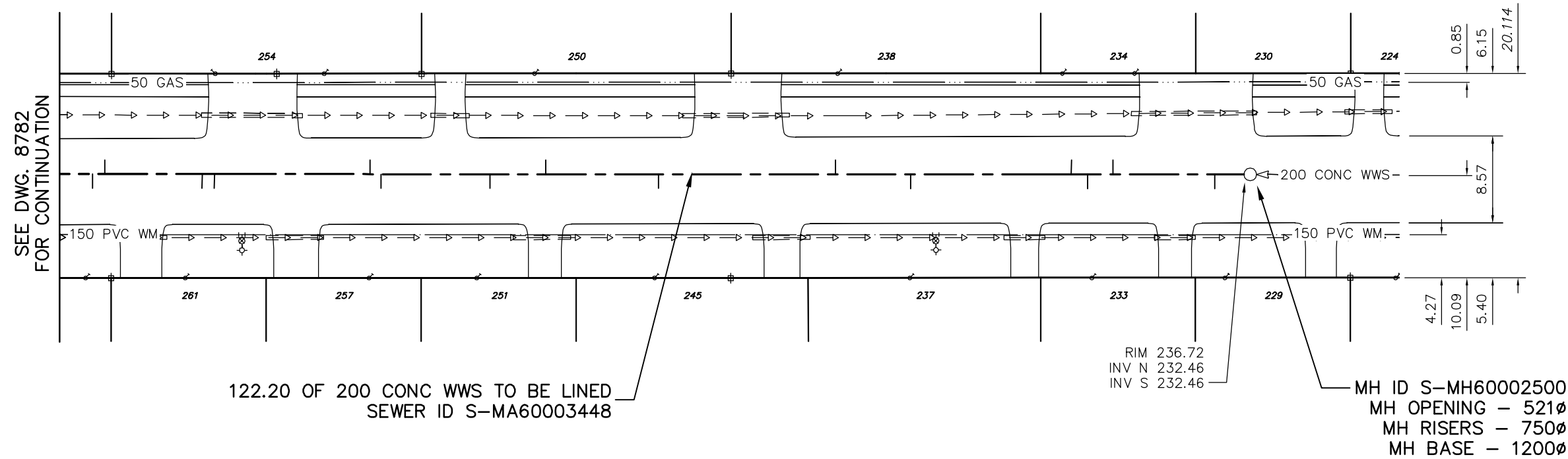




5.0 FULLY DETERIORATED
OVALITY = 5.0%

117.2 FULLY DETERIORATED
OVALITY = 5.0%

LAXDAL ROAD



SEE DWG. 8782
FOR CONTINUATION

122.20 OF 200 CONC WWS TO BE LINED
SEWER ID S-MA60003448

RIM 236.72
INV N 232.46
INV S 232.46

MH ID S-MH60002500
MH OPENING - 521φ
MH RISERS - 750φ
MH BASE - 1200φ

SEWER JUNCTION INFORMATION
FROM SEWER VIDEO INSPECTION
S-MA60003448

DISTANCE FROM MH S-MH60002500				
3.5	S	150φ	EAST	CNI
13.5	S	150φ	WEST	CN
16.0	S	150φ	EAST	CNI
17.6	S	150φ	WEST	CN
33.4	S	150φ	EAST	CN
40.8	S	150φ	WEST	CN
58.2	S	150φ	EAST	CN
69.3	S	150φ	WEST	CN
74.8	S	150φ	EAST	CX
85.5	S	150φ	EAST	CNI
86.6	S	150φ	WEST	CNI
101.9	S	150φ	TOP	CNI
103.1	S	150φ	EAST	CXI
112.7	S	150φ	WEST	CN
113.9	S	150φ	EAST	CN

ENGINEER'S SEAL

ORIGINAL
SIGNED BY
S.R.J.
COURNOYER
09/01/08

BID OPPORTUNITY: 924-2008
FILENAME : 8783.dwg
PLOT DATE : 2009 01 08

METRIC
WHOLE NUMBERS INDICATE MILLIMETRES
DECIMALIZED NUMBERS INDICATE METRES

B.M. ELEV.	FIELD BOOK #:	CITY OF WINNIPEG WATER AND WASTE ENGINEERING DIVISION		THE CITY OF WINNIPEG WATER AND WASTE DEPARTMENT	
POSTED TO LIS		DESIGNED BY: SC	CHECKED BY: SC	2009 SEWER RENEWALS BY CIPP LININGS LAXDAL ROAD	
		DRAWN BY: CJH	APPROVED BY: KZ	2ND MH N OF BATCHELOR AVENUE TO 1ST MH N OF BATCHELOR AVENUE	
		HOR. SCALE 1:500 VERTICAL	RELEASED FOR CONSTRUCTION	SHEET 22 OF 34 CITY DRAWING NUMBER 8783	
NO.	REVISIONS	DATE	BY	DATE	2009 01 08