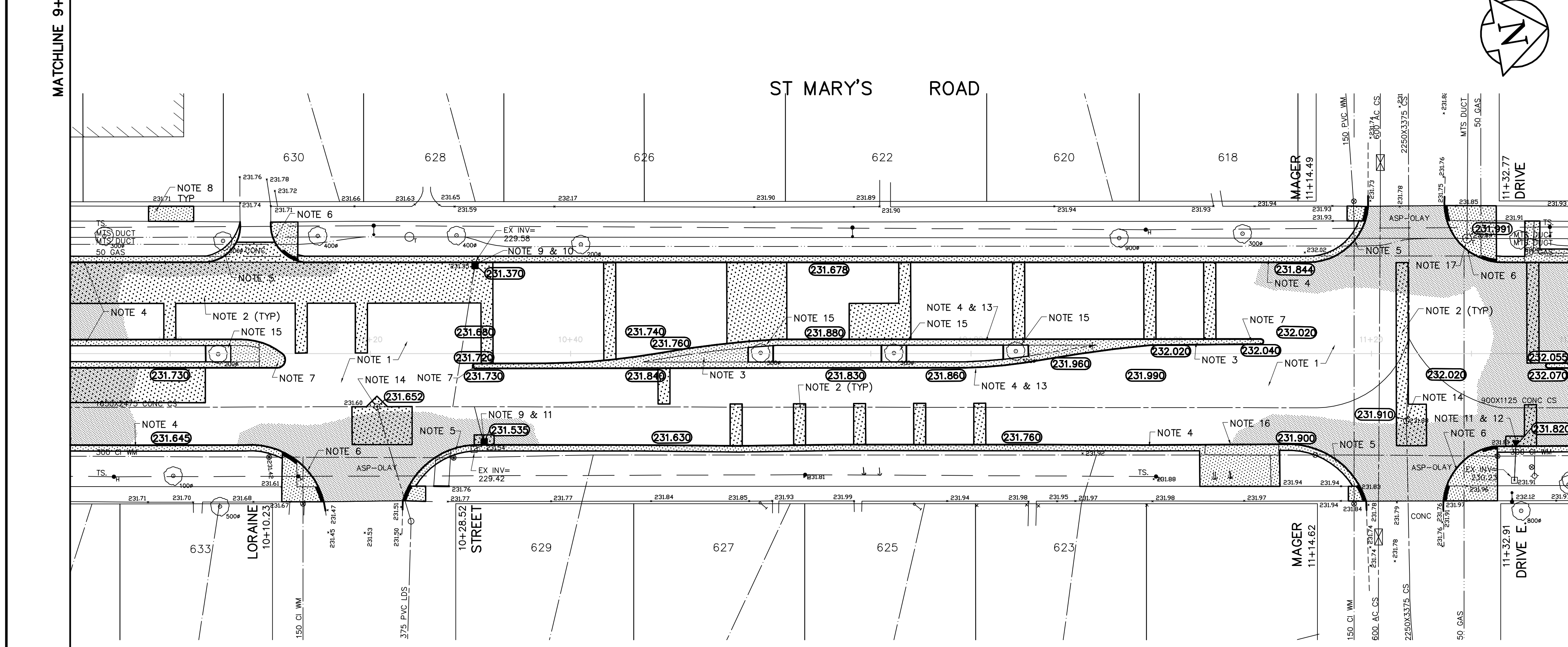


**APEGN**  
 Certificate of Authorization  
 Earth Tech Canada Inc.  
 No. 730 Expiry: April 30, 2008



- REFERENCE NOTES:**
- BASILINE IS CENTERED BETWEEN NORTHBOUND AND SOUTHBOUND GUTTER BACK OF CURB
  - LEGAL PLAN - L.B.I.S.
  - EARTH TECH FIELD BOOK No. 4574
  - PAVEMENT DIMENSIONS ARE TO BACK OF CURB
  - ALL WORK TO CONFORM TO CITY OF WINNIPEG STANDARD CONSTRUCTION SPECIFICATIONS
- CONSTRUCTION NOTES:**
- PLANE EXISTING ASPHALT AND CONSTRUCT NEW 80mm ASPHALTIC CONCRETE OVERLAY.
  - CONSTRUCT NEW 200mm PLAIN DOWELLED CONCRETE. PAVEMENT C/W ASPHALTIC CONCRETE OVERLAY.
  - CONSTRUCT NEW MONOLITHIC CONCRETE MEDIAN SLAB.
  - CONSTRUCT NEW MONOLITHIC CONCRETE SPLASH STRIP.
  - CONSTRUCT NEW MONOLITHIC CONCRETE MODIFIED SPLASH STRIP.
  - CONSTRUCT NEW MONOLITHIC CONCRETE MODIFIED BARRIER CURB AND SIDEWALK.
  - CONSTRUCT NEW MONOLITHIC CONCRETE BULLNOSE.
  - CONSTRUCT NEW CONCRETE SIDEWALK.
  - INSTALL NEW CURB AND GUTTER INLET C/W CATCHBASIN (SD-024) AND CONNECT NEW 250mm LEAD TO EXISTING LEAD.
  - ABANDON EXISTING CATCHBASIN.
  - ABANDON EXISTING DRAINAGE INLET.
  - INSTALL NEW CURB AND GUTTER INLET C/W CATCHPIT (SD023) AND CONNECT TO EXISTING CATCHBASIN.
  - REMOVE EXISTING PATIO BLOCK SPLASH STRIP.
  - ADJUST EXISTING CATCHBASIN/MANHOLE TO GRADE.
  - CONSTRUCT NEW TREE WELL C/W BARK MULCH, WEED BARRIER FABRIC AND CONCRETE BARRIER CURB (SEPARATE).
  - CONSTRUCT NEW MONOLITHIC CONCRETE BARRIER CURB AND SIDEWALK.
  - ADJUST EXISTING MTS MANHOLE (BY OTHERS).

**METRIC**  
 WHOLE NUMBERS INDICATE MILLIMETRES  
 DECIMALIZED NUMBERS INDICATE METRES

150 mm W.M.	WATERMAIN	150 mm W.M.	HYDRO	⊗	⊗	⊗	⊗
⊕	HYDRANT	⊕	M.T.S.	⊕	⊕	⊕	⊕
⊕	VALVE	⊕	CONCRETE	⊕	⊕	⊕	⊕
⊕	LAND DRAINAGE SEWER	⊕	ASPHALT	⊕	⊕	⊕	⊕
⊕	WASTEWATER SEWER	⊕	PROPERTY LINE	⊕	⊕	⊕	⊕
⊕	MANHOLE	⊕	SURVEY BAR	⊕	⊕	⊕	⊕
⊕	CATCH BASIN	⊕	ELEVATION	⊕	⊕	⊕	⊕
⊕	CURB INLET	⊕	TREE	⊕	⊕	⊕	⊕
⊕	JUNCTIONS	⊕	SIDEWALK RAMP	⊕	⊕	⊕	⊕
⊕	TEST HOLE (07-R-03)	⊕	CONCRETE SIDEWALK	⊕	⊕	⊕	⊕
⊕	GAS	⊕	FENCE	⊕	⊕	⊕	⊕
EXISTING	LEGEND - PLAN	PROPOSED	EXISTING	LEGEND - PLAN	PROPOSED	EXISTING	LEGEND - PROFILE

**LOCATION APPROVED UNDERGROUND STRUCTURES**

SUPV. U/G STRUCTURES DATE COMMITTEE

**NOTE:**  
 LOCATION OF UNDERGROUND STRUCTURES AS SHOWN ARE BASED ON THE BEST INFORMATION AVAILABLE, BUT NO GUARANTEE IS GIVEN THAT ALL EXISTING UTILITIES ARE SHOWN OR THAT THE GIVEN LOCATIONS ARE EXACT. CONFIRMATION OF EXISTENCE AND EXACT LOCATION OF ALL SERVICES MUST BE OBTAINED FROM THE INDIVIDUAL UTILITIES BEFORE PROCEEDING WITH CONSTRUCTION.

B.M. 54-003	TBLT IN E. CONC FOUNDATION OF ST. VITAL CIVIC OFFICE 604 ST MARY'S W. SIDE OF FRONT ENTRANCE	DATE	BY
0	ISSUED FOR TENDER	MAR 6/08	KWR
A	ISSUED FOR REVIEW	FEB 25/08	BC
NO.	REVISIONS	DATE	BY

**EarthTech**  
 A Tyco International Ltd. Company

DESIGNED BY	RC	CHECKED BY	KWR/BC
DRAWN BY	BC	APPROVED BY	ORIGINAL SIGNED
HOR. SCALE:	1:250	RELEASED FOR CONSTRUCTION BY:	ORIGINAL SIGNED
VERTICAL:	1:10	DATE	MARCH 6, 2008

ENGINEER'S SEAL  
 PROVINCE OF MANITOBA  
 ORIGINAL SIGNED  
 K.W.  
 RAE  
 MAR 6/08  
 REGISTERED PROFESSIONAL ENGINEER

**THE CITY OF WINNIPEG**  
 PUBLIC WORKS DEPARTMENT  
 TRANSPORTATION ENGINEERING DIVISION

**ST. MARY'S ROAD**  
 CONCRETE REPAIRS AND ASPHALT RESURFACING

CITY DRAWING NUMBER P-3292-09  
 SHEET 9 OF 12

PLAN PROFILE  
 STA 9+90 TO STA 11+40