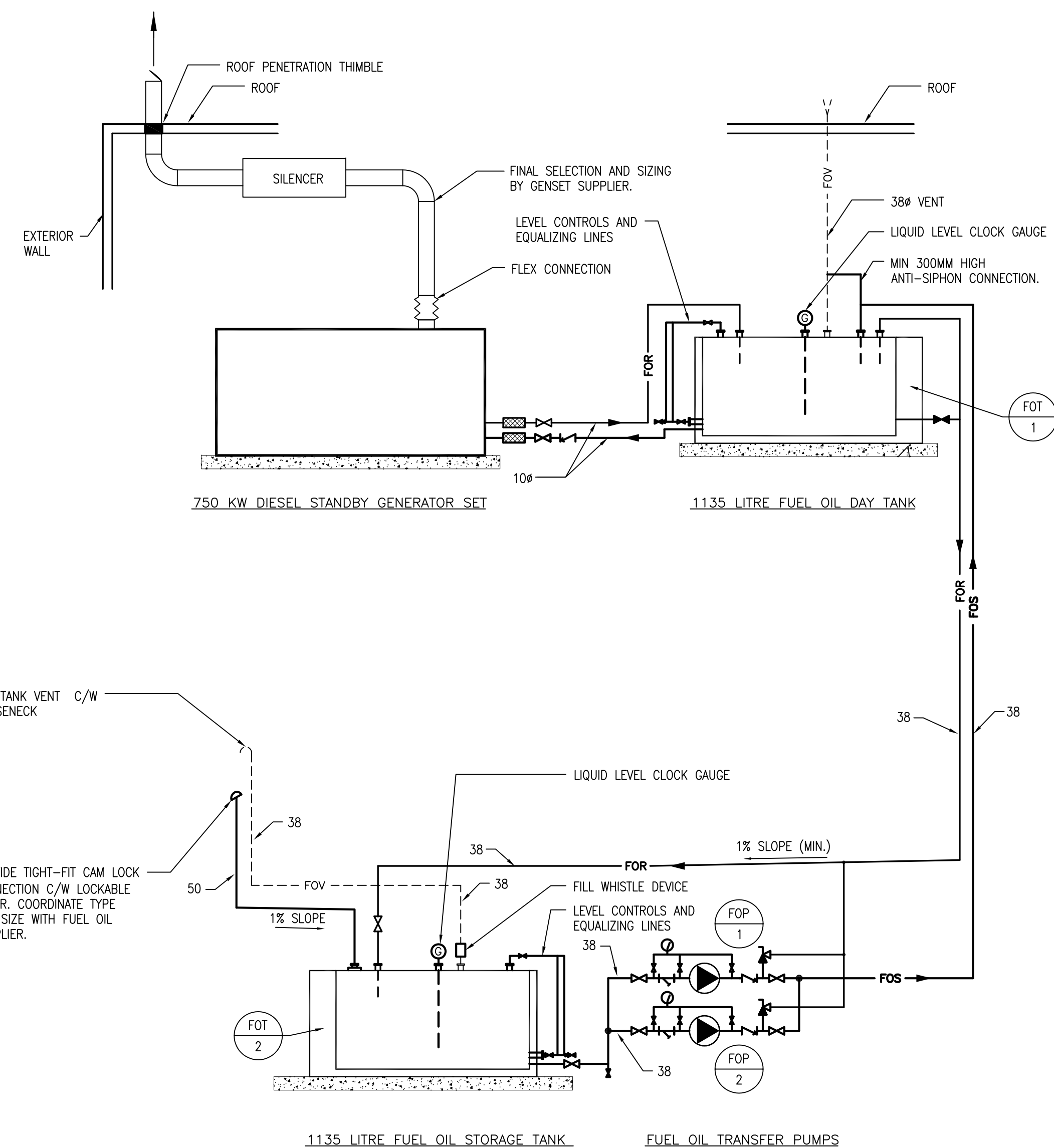


PART SUB-BASEMENT MECHANICAL ROOM PLAN - NEW FUEL PUMP AND TANK

SCALE: 1:50



FUEL OIL PIPING SCHEMATIC

SCALE: N.T.S.

DRAWING NOTES

1. NEW 1135 LITRE FUEL TANK ON 100mm HOUSEKEEPING PAD.
2. NEW FUEL OIL TRANSFER PUMP SKID C/W CONTROLS ON 400mm HOUSEKEEPING PAD. REFER TO SCHEMATIC FOR PIPING.
3. NEW 2-HOUR FIRE RATED ROOM BY ARCHITECTURAL C/W CONCRETE CURB AT BASE OF WALLS.
4. 75mm CONCRETE CONTAINMENT CURB AT DOOR.
5. EXHAUST FAN C/W BACKDRAFT DAMPER VENTED TO EXTERIOR.
6. NEW EXHAUST GRILLE. PRICE MODEL DE439 400X400. MATCH COLOUR TO BUILDING EXTERIOR.
7. FUEL FILL CONNECTION C/W LOCKABLE CAP. WITHIN ARCHITECTURAL LOCK BOX.
8. FUEL VENT C/W GOOSENECK.
9. FUEL OIL TRANSFER PUMP CONTROLLER.
10. EXISTING FIRE PUMP ROOM. TEST FIRE PUMP AT END OF INSTALLATION.

SMS ENGINEERING

SMS Engineering Ltd. Consulting Engineers  
 770 Broadford Street Winnipeg MB Canada R3M 0K3  
 Telephone: 204.775.2201 Fax: 204.772.2193  
 sms@smseng.com

07-232-01  
 1. ISSUED FOR ADDENDUM NO. 2 JS 09.07.27  
 2. ISSUED FOR BID OPPORTUNITY RL 09.06.19

NO.	REVISION/DESCRIPTION	BY	DATE
1.			

SEALS



DRAWN BY: RR/JC  
 DATE: 2008.01.16  
 CHECKED BY: RL  
 USER APPROVAL  
 APPROVED RL

CITY OF WINNIPEG  
 PLANNING, PROPERTY &  
 DEVELOPMENT DEPARTMENT  
 CIVIC ACCOMMODATIONS DIVISION  
 300 - 65 GARRY ST. R3C 4K4

PROJECT  
 CITY OF WINNIPEG 510 MAIN ST.  
 EMERGENCY DISTRIBUTION UPGRADE  
 PHASE 1

SHEET TITLE  
 SUB-BASEMENT MECHANICAL ROOM  
 PROPOSED LOCATION FOR  
 NEW EQUIPMENT

SCALE AS SHOWN PROJECT NO. 07-232-01 SHEET NO. M2.0

DRAWING SHEET SIZE: A1 (841mm x 594mm) PLOT 1:1